







A spatial emergent constraint on the sensitivity of soil carbon turnover to global warming

Rebecca M. Varney ^{1✉}, Sarah E. Chadburn¹, Pierre Friedlingstein ^{1,2}, Eleanor J. Burke ³, Charles D. Koven ⁴, Gustaf Hugelius ⁵ & Peter M. Cox ¹

Carbon cycle feedbacks represent large uncertainties in climate change projections, and the response of soil carbon to climate change contributes the greatest uncertainty to this. Future changes in soil carbon depend on changes in litter and root inputs from plants and especially on reductions in the turnover time of soil carbon (τ_s) with warming. An approximation to the latter term for the top one metre of soil ($\Delta C_{s,\tau}$) can be diagnosed from projections made with the CMIP6 and CMIP5 Earth System Models (ESMs), and is found to span a large range even at 2 °C of global warming (-196 ± 117 PgC). Here, we present a constraint on $\Delta C_{s,\tau}$, which makes use of current heterotrophic respiration and the spatial variability of τ_s inferred from observations. This spatial emergent constraint allows us to halve the uncertainty in $\Delta C_{s,\tau}$ at 2 °C to -232 ± 52 PgC.

¹College of Engineering, Mathematics and Physical Sciences, University of Exeter, Laver Building, North Park Road, Exeter EX4 4QF, UK. ²LMD/IPSL, ENS, PSL Université, École Polytechnique, Institut Polytechnique de Paris, Sorbonne Université, CNRS, 75006 Paris, France. ³Met Office Hadley Centre, FitzRoy Road, Exeter EX1 3PB, UK. ⁴Earth and Environmental Sciences Division, Lawrence Berkeley National Laboratory, Berkeley, CA 94720, USA. ⁵Department of Physical Geography and Bolin Centre of Climate Research, Stockholm University, Stockholm 10691, Sweden. ✉email: r.varney@exeter.ac.uk

Climate–carbon cycle feedbacks¹ must be understood and quantified if the Paris Agreement Targets are to be met². Changes in soil carbon represent a particularly large uncertainty^{3–7}, with the potential to significantly reduce the carbon budget for climate stabilisation at 2 °C global warming⁸. Previous studies have investigated the response of soil carbon to climate change based on both observational studies⁹ and Earth System Models (ESMs)¹⁰. ESMs are coupled models which simulate both climate and carbon cycle processes. Projects such as the Coupled Model Inter-comparison Project (CMIP)^{11,12}, have allowed for consistent comparison of the response of soil carbon under climate change from existing state-of-the-art ESMs. However, the uncertainty due to the soil carbon feedback did not reduce significantly between the CMIP3 and CMIP5 model generations⁶, or with the latest CMIP6 models (see Fig. 1 and Supplementary Fig. 1), such that the projected change in global soil carbon still varies significantly amongst models¹³.

This study uses an alternative method to obtain a constraint on the ESM projections of soil carbon change. In previous studies, emergent constraints based on temporal trends and variations have been used successfully to reduce uncertainty in climate change projections¹⁴. Our approach follows the method used in Chadburn et al.¹⁵, where a spatial temperature sensitivity is used to constrain the future response to climate change—which we term as a *spatial emergent constraint*. Our study combines the Chadburn et al.¹⁵ method with the soil carbon turnover analysis of Koven et al.¹⁶ to get a constraint on the sensitivity of soil carbon turnover to global warming.

Soil carbon (C_s) is increased by the flux of organic carbon into the soil from plant litter and roots, and decreased by the breakdown of that organic matter by soil microbes which releases CO_2 to the atmosphere as the heterotrophic respiration flux (R_h). If the vegetation carbon is at steady-state, litter-fall will equal the Net Primary Production of plants (NPP). If the soil carbon is also near to a steady-state—and in the absence of significant fire fluxes and other non-respiratory carbon losses—the litter-fall, NPP, and R_h will be approximately equal to one another. Even over the historical period, when atmospheric CO_2 has been increasing and there has been a net land carbon sink, this approximation holds well (see Supplementary Fig. 4).

In order to separate the effects of changes in NPP from the effects of climate change on R_h , we define an effective turnover time¹⁷ for soil carbon as $\tau_s = C_s/R_h$. The turnover time of soil carbon is known to be especially dependent on temperature³. A common assumption is that τ_s decreases by about 7% per °C of warming (equivalent to assuming that $q_{10} = 2$)¹⁸. However, this sensitivity differs between models, and also between models and observations.

We can write a long-term change in soil carbon (ΔC_s), as the sum of a term arising from changes in litter-fall ($\Delta C_{s,L}$), and a term arising from changes in the turnover time of soil carbon ($\Delta C_{s,\tau}$):

$$\Delta C_s = \Delta(R_h \tau_s) \approx \Delta C_{s,L}(t) + \Delta C_{s,\tau}(t) = \tau_{s,0} \Delta R_h(t) + R_{h,0} \Delta \tau_s(t) \quad (1)$$

Model projections of the first term ($\Delta C_{s,L}$) differ primarily because of differences in the extent of CO_2 -fertilisation of NPP, and associated nutrient limitations. The second term ($\Delta C_{s,\tau}$) differs across models because of differences in the predicted future warming, and because of differences in the sensitivity of soil carbon decomposition to temperature (which includes an influence from faster equilibration of fast-turnover compared to slow-turnover carbon pools under changing inputs¹³). This study provides an observational constraint on the latter uncertainty. As the vast majority of the CMIP6 and CMIP5 models do not yet

represent vertically resolved deep soil carbon in permafrost or peatlands, we focus our constraint on carbon change in the top 1 metre of soil. To ensure a fair like-for-like comparison we also exclude the two CMIP6 models that do represent vertically-resolved soil carbon (CESM2 and NorESM2), although this has a negligible effect on our overall result. Our study therefore applies to soil carbon loss in the top 1 metre of soil only. Below we show that it is possible to significantly reduce the uncertainty in this key feedback to climate change using current-day spatial data to constrain the sensitivity to future warming.

Results and discussion

Proof of concept. For each ESM, we begin by calculating the effective τ_s using time-averaged (1995–2005) values of C_s and R_h at each grid-point, and applying our definition of $\tau_s = C_s/R_h$. We do likewise for observational datasets of soil carbon in the top 1 metre^{19,20} and time-averaged (2001–2010) heterotrophic respiration²¹, as shown in Fig. 2. Figure 2c shows the map of inferred values of τ_s from these observations, with a notable increase from approximately 7 years in the warm tropics to over 100 years in the cooler high northern latitudes.

Similar maps can be diagnosed for each of year of data, for each ESM, and for each future scenario, giving time and space varying values of τ_s for each model run. This allows us to estimate $\Delta C_{s,\tau}$ via the last term on the right of Eq. (1). For each ESM, the $R_{h,0}$ value is taken as the mean over the decade 1995–2005, to overlap with the time period of the observations and to maintain consistency across CMIP generations. Individual grid-point τ_s values are calculated for each year before calculating area-weighted global totals of $\Delta C_{s,\tau}$. The uncertainty of $\Delta C_{s,\tau}$ stems from the uncertainty in soil carbon turnover (τ_s), and the uncertainty due to differing climate sensitivities of the models. In this study, we aim to quantify and constrain the uncertainty in τ_s . To isolate the latter uncertainty, we consider $\Delta C_{s,\tau}$ for differing levels of global mean warming in each model. The resulting dependence of global total $\Delta C_{s,\tau}$ on global warming is shown in Fig. 1a, for each of the ESMs considered in both CMIP6 and CMIP5 (seven CMIP6 ESMs and nine CMIP5 ESMs), and for three Shared Socioeconomic Pathways (SSP): SSP126, SSP245 and SSP585 (CMIP6)²², or the equivalent Representative Concentration Pathways (RCP): RCP2.6, RCP4.5 and RCP8.5 (CMIP5)²³. In all cases $\Delta C_{s,\tau}$ is negative, which is consistent with the soil carbon turnover time decreasing with warming. The more surprising thing to note is the huge range in the projections, with a spread at 2 °C global mean warming of approximately 400 PgC, regardless of future SSP/RCP scenario. Figure 1b plots the fractional change in soil carbon $\Delta C_{s,\tau}/C_{s,0}$, showing that there is a large range of effective q_{10} sensitivities between the model projections.

Unfortunately, we do not have time-varying observational datasets of C_s and R_h that might allow us to directly constrain this projection uncertainty. Instead we explore whether the observed spatial variability in τ_s (as shown in Fig. 2c) provides some observational constraint on the sensitivity of τ_s to temperature. In doing so, we are motivated by Chadburn et al.¹⁵ who used the correlation between the observed geographical distributions of permafrost and air temperature to constrain projections of future permafrost area under global warming. Similarly, we use ESMs to test whether the spatial variation in τ_s reveals the sensitivity of soil carbon turnover to temperature. The spatial patterns of τ_s in CMIP5 simulations and observations were previously shown in Koven et al.¹⁶, and here we test whether such relationships can be used to estimate the response of soil carbon to future climate change, using a combination of CMIP6 and CMIP5 models.

Figure 3a is a scatter plot of $\log \tau_s$ against temperature, using the τ_s values shown in Fig. 2c and mean temperatures from the

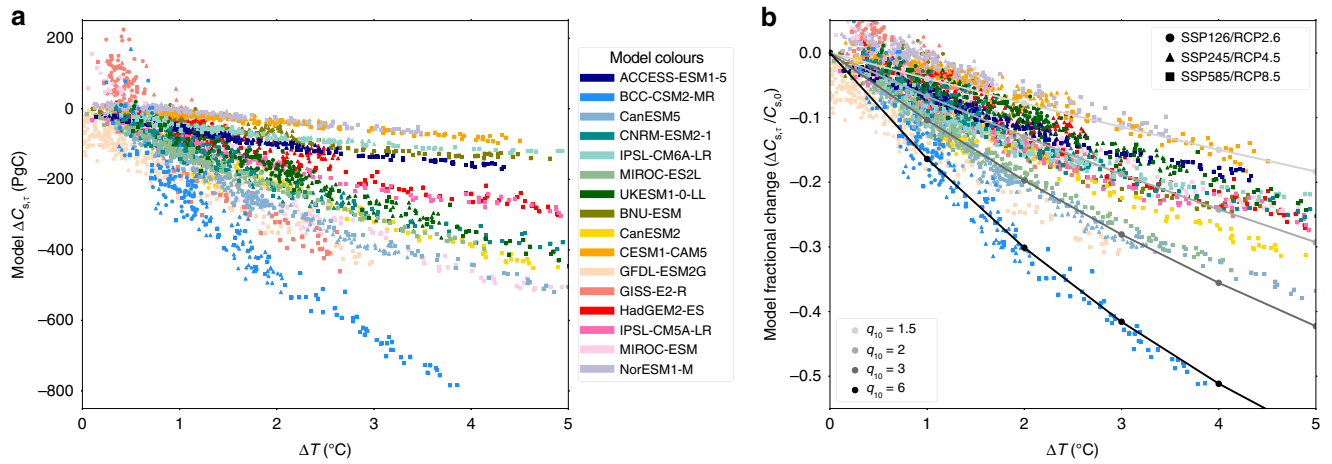


Fig. 1 Uncertainty in future changes in soil carbon due to reduction in turnover time. $\Delta C_{s,\tau}$ vs. ΔT plot diagnosed from sixteen Earth System Models (seven CMIP6 ESMs and nine CMIP5 ESMs), for three different future scenarios: SSP126, SSP245, SSP585, or RCP2.6, RCP4.5, RCP8.5, respectively. **a** The change in soil carbon due to the change in soil carbon turnover time against change in global mean temperatures; **b** The fractional change in soil carbon due to the change in soil carbon turnover time against change in global mean temperatures, and compared to different effective q_{10} sensitivities.

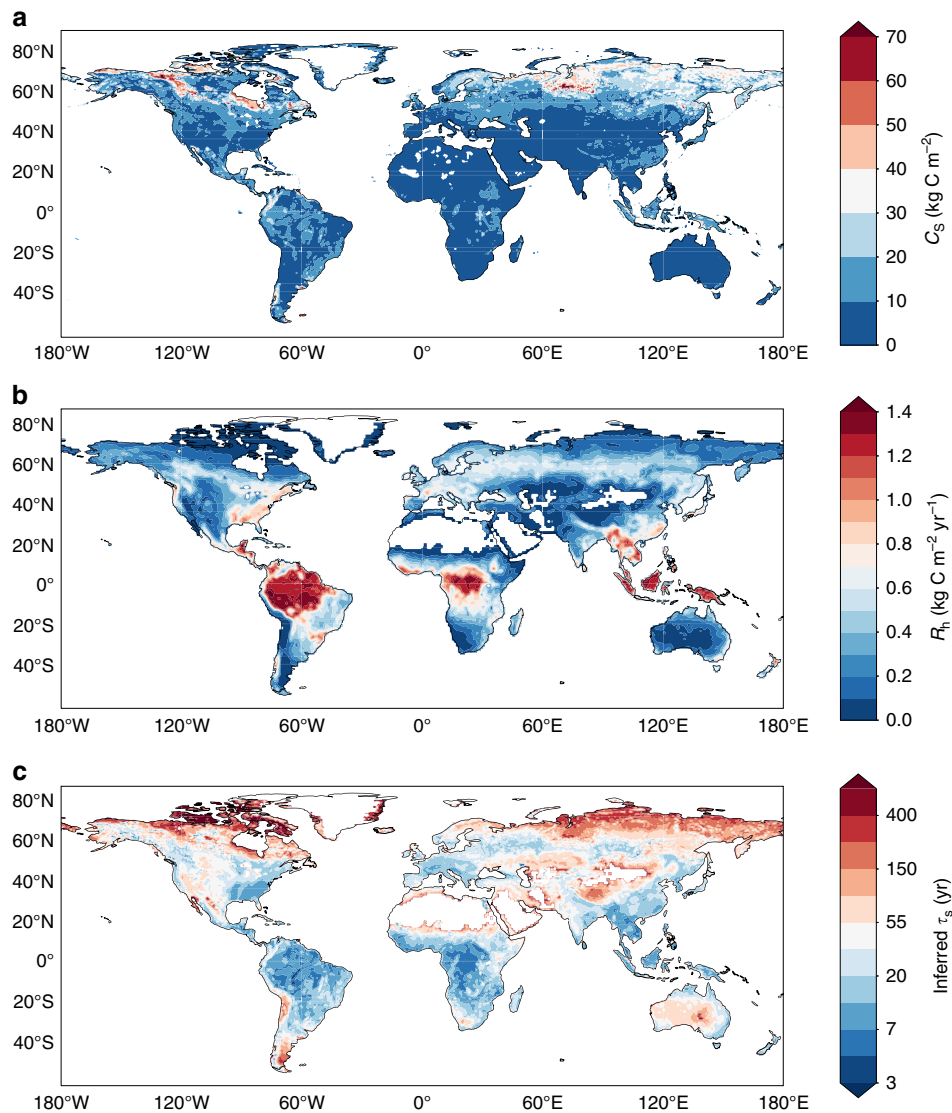


Fig. 2 Spatial variability of soil carbon turnover time inferred from observations. Maps of **a** observed soil carbon (C_s) to a depth of 1 m (kg C m^{-2})^{19,20}, **b** observed heterotrophic respiration ($R_{h,0}$) ($\text{kg C m}^{-2} \text{yr}^{-1}$)²¹, and **c** inferred soil carbon turnover time ($\log \tau_s$) (yr).

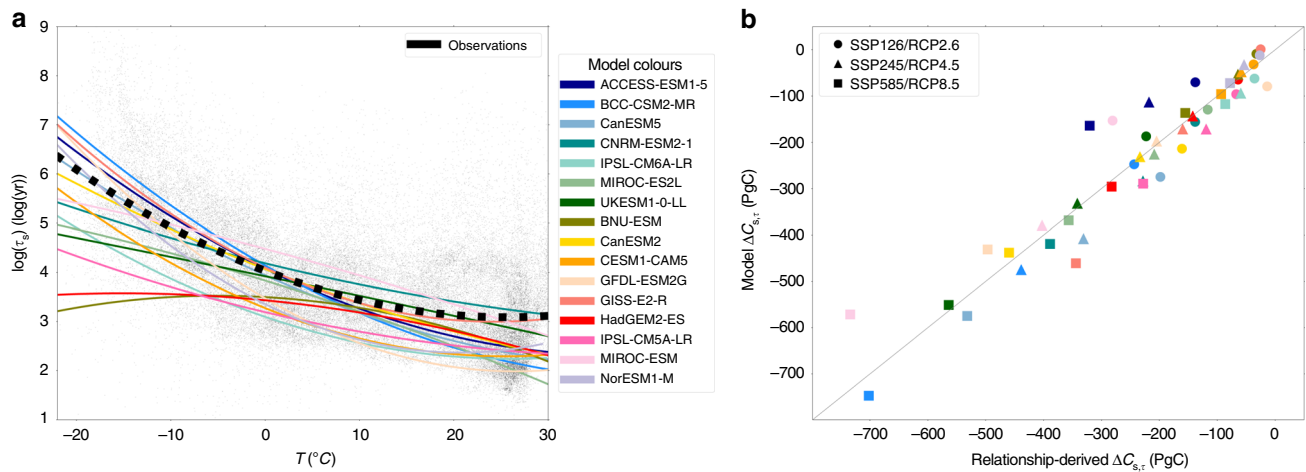


Fig. 3 Using spatial variability of soil carbon turnover time to estimate $\Delta C_{s,\tau}$. **a** Scatter-plot of the relationship between $\log \tau_s$ and mean air temperature from observations^{19–21,24} (black points), and a quadratic fit (black-dotted line) representing the observational temperature sensitivity of $\log \tau_s$. The equivalent quadratic fits for the ESMs are shown by the coloured lines; **b** The proof of principle for our method, showing an actual vs. estimated comparison, representing the modelled versus the relationship-derived values of the $\Delta C_{s,\tau}$, where the change is considered between the start (1995–2005) and the end (2090–2100) of 21st century and is assumed to relate to the top 1 metre of soil.

WFDEI dataset over the period 2001–2010²⁴. The thick black-dotted line is a quadratic fit through these points. Also shown for comparison are equivalent quadratic fits for each model (coloured lines), using the model $\log \tau_s$ and mean near-surface air temperature (T) values for each grid-point, over an overlapping period with the observations (1995–2005). There is a spread in the individual data points due to variation in soil moisture, soil type, and other soil parameters²⁵. The model specific spread in the data can be seen for the CMIP6 and CMIP5 models in Supplementary Figs. 2 and 3, respectively. Although models do not account for every possible factor contributing to this spread, the spread of points in the models is generally similar to the observations. However, differences between the best-fit functions relating τ_s to T are evident between the models, and between the models and the observations¹⁶.

This suggests that we may be able to constrain $\Delta C_{s,\tau}$ using the observed τ_s vs. T fit from the observations, but only if we can show that such functions can be used to predict $\Delta C_{s,\tau}$ under climate change. In order to test that premise, we attempt to reconstruct the time-varying $\Delta C_{s,\tau}$ projection for each model using the time-invariant τ_s vs. T fit across spatial points (Fig. 3a), and the time-invariant $R_{h,0}$ field. The change in soil carbon turnover time ($\Delta \tau_s(t)$) for a given model run is estimated at each point based-on the τ_s vs. T curve, and the time-varying projection of T at that point. A local estimate of the subsequent change in soil carbon can then be made based-on the farthest right-hand term of Eq. (1) ($R_{h,0} \Delta \tau_s$), which can be integrated up to provide an estimated change in global soil carbon in the top 1 metre ($\Delta C_{s,\tau}$).

Figure 3b shows the result of this test for all models and all respective SSP/RCP scenarios. The axes of this plot show equivalent variables which represent the global $\Delta C_{s,\tau}$ between the mean value for 2090–2100 and the mean value for 1995–2005. The y -axis represents the actual values for each model as shown in Fig. 1, and the x -axis represents our estimate derived from spatial variability (as in Fig. 3a). As hoped, actual vs. estimated values cluster tightly around a one-to-one line with an r^2 correlation coefficient value of 0.90. Although some hot-climate regions will inevitably experience temperatures beyond those covered by current-day spatial variability, these tend to be regions with low soil carbon, so this does not have a major impact on the success of our method.

Table 1 Sensitivity study of spatial emergent constraint.

Constrained $\Delta C_{s,\tau}$ at 2 °C global mean warming

	Combined	CMIP6	CMIP5
CARDAMOM R_h	−232 ± 52	−238 ± 62	−227 ± 48
MODIS NPP	−201 ± 53	−206 ± 63	−196 ± 49
Raich 2002 R_s	−243 ± 50	−249 ± 59	−238 ± 46
CARDAMOM R_h	−227 ± 95	−220 ± 75	−230 ± 109
(Observational τ_s v T fit, model $R_{h,0}$)			
Unconstrained $\Delta C_{s,\tau}$	−196 ± 117	−216 ± 109	−180 ± 121

The table presents the sensitivity of the emergent constraint on $\Delta C_{s,\tau}$ to model ensemble: CMIP5, CMIP6 or CMIP5 and CMIP6 combined (columns), and to the observational dataset for heterotrophic respiration (rows). The penultimate row presents the constraint using the observational τ_s v T fit and model $R_{h,0}$, opposed to observational $R_{h,0}$, to isolate the uncertainty reduction from these different components. For comparison, the last row shows the mean and standard deviation of the unconstrained model ensemble.

Spatial emergent constraint. This gives us confidence to use the τ_s vs. T fit and $R_{h,0}$ from observations to constrain future projections of $\Delta C_{s,\tau}$. To remove the uncertainty in future $\Delta C_{s,\tau}$ due to the climate sensitivity of the models, we investigate a common amount of global mean warming in each model. Figure 4a is similar to Fig. 3b but instead for the more policy-relevant case of 2 °C of global warming. As before, the y -axis represents the modelled $\Delta C_{s,\tau}$ and the x -axis is our estimate derived from spatial variability. Once again, the actual and estimated values of $\Delta C_{s,\tau}$ cluster around the one-to-one line (with $r^2 = 0.87$). The model range arises partly from differences in the initial field of heterotrophic respiration ($R_{h,0}$), and partly from differences in $\Delta \tau_s$ (compare first row to penultimate row of Table 1).

The vertical green line in Fig. 4a represents the mean estimate when the τ_s vs. T relationship and the $R_{h,0}$ field from the model are replaced with the equivalents from the observations. The spread shown by the shaded area represents the relatively small impact on $\Delta C_{s,\tau}$ of differences in modelled spatial climate change patterns at 2 °C of global warming. In order to estimate the remaining uncertainty in $\Delta C_{s,\tau}$ we treat this spread as equivalent to an observational uncertainty in an emergent constraint approach²⁶. We apply a standard statistical approach^{27,28} to estimate the probability density function of the y -axis variable (model $\Delta C_{s,\tau}$),

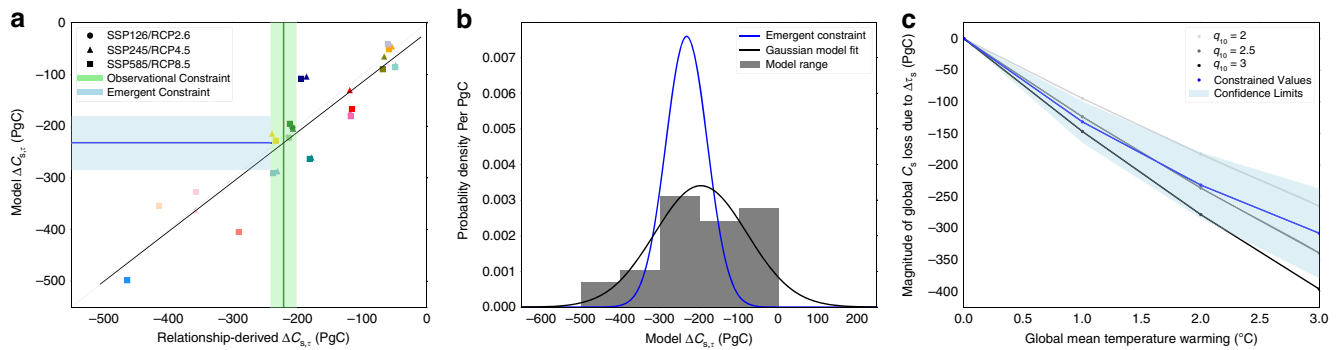


Fig. 4 Emergent constraint on $\Delta C_{s,\tau}$ as a function of global warming. **a** Actual vs. estimated scatter plot for $\Delta C_{s,\tau}$ for 2 °C of global warming. The vertical green line defines the observational constraint which is derived using observational data and the future spatial temperature field of each model (decadal average), and the shaded region represents the corresponding uncertainty (± 1 standard deviation). The horizontal blue line represents our emergent constraint, with the shaded region showing the corresponding uncertainty (± 1 standard deviation) which results from the differing future spatial warming patterns seen in the future spatial temperature fields across the ESMs, and the emergent relationship between the model data points (black line). **b** Probability density function showing the Gaussian distribution of $\Delta C_{s,\tau}$ values from the unweighted prior model ensemble (black line) and the emergent constraint (blue line). **c** Constrained $\Delta C_{s,\tau}$ values at different levels of global warming (blue), including the likely (± 1 standard deviation) uncertainty bounds (shaded blue). Different effective global q_{10} values shown for comparison; our emergent constraint is consistent with an effective $q_{10} \approx 2.5 \pm 0.6$.

Table 2 CMIP6 models.

Model	Institute
ACCESS-ESM1-5	Australian Community Climate and Earth Systems Simulator, Australia
BCC-CSM2-MR	The Beijing Climate Center, China
CanESM5	Canadian Centre for Climate Modelling and Analysis, Canada
CNRM-ESM2-1	CNRM/CERFACS, French Centre National de la Recherche Scientifique, France
IPSL-CM6A-LR	Institut Pierre-Simon Laplace, France
MIROC-ES2L	Atmosphere and Ocean Research Institute and Japan Agency for Marine-Earth Science and Technology, Japan
UKESM1-0-LL	NERC and Met Office Hadley Centre, UK

Table 3 CMIP5 models.

Model	Institute
BNU-ESM	College of Global Change and Earth System Science, China
CanESM2	Canadian Centre for Climate Modelling and Analysis, Canada
CESM1-CAM5	National Science Foundation, Department of Energy, NCAR, USA
GFDL-ESM2G	NOAA Geophysical Fluid Dynamics Laboratory, USA
GISS-ES-R	NASA Goddard Institute for Space Studies, USA
HadGEM2-ES	Met Office Hadley Centre, UK
IPSL-CM5A-LR	Institut Pierre-Simon Laplace, France
MIROC-ESM	Atmosphere and Ocean Research Institute and Japan Agency for Marine-Earth Science and Technology, Japan
NorESM-M	Norwegian Climate Centre, Norway

accounting for both this observational spread and the quality of the emergent relationship. To test the robustness to the choice of observations we have repeated the analysis with different datasets that represent heterotrophic respiration, which produces strongly-overlapping emergent constraints, and completing the analysis with both CMIP6 and CMIP5 models shows that the result is also robust to the choice of model ensemble (see Table 1).

Figure 4b shows the resulting emergent constraint (blue line), and compares to the unweighted histogram of model values (grey blocks), and a Gaussian fit to that prior distribution (black line). The spatial emergent constraint reduces the uncertainty in $\Delta C_{s,\tau}$ at 2 °C of global warming from -196 ± 117 PgC to -232 ± 52 PgC (where these are mean values plus and minus one standard deviation for the top 1 metre). This same method can be applied to find constrained values of $\Delta C_{s,\tau}$ for other values of global warming. Figure 4c shows the constrained range of $\Delta C_{s,\tau}$ as a function of global warming. This rules out the most extreme projections but nonetheless suggests substantial soil carbon losses due to climate change even in the absence of losses of deeper permafrost carbon.

Methods

Obtaining spatial relationships. In this section we explain how the quadratic relationships representing the spatial $\log \tau_s$ -temperature sensitivity shown in Fig. 3a (and Supplementary Figs. 2, 3 and 6) were derived, for both the Earth System Models (ESMs) in CMIP6 and CMIP5, and using the observational data. This is similar to the method used in Koven et al.¹⁶.

Obtaining spatial relationships for CMIP models. The CMIP6 models used in this study are shown in the Table 2, and the CMIP5 models used in this study are shown in Table 3.

To obtain model specific spatial $\log \tau_s$ -temperature relationships, the following method was used. A reference time period was considered (1995–2005), this was taken as the end of the CMIP5 historical simulation to be consistent across CMIP generations and to best match the observational data time frame considered. Then, monthly model output data was time averaged over this period, for the output variables ‘soil carbon content’ (C_s) in kg m^{-2} , ‘heterotrophic respiration carbon flux’ (R_h) in $\text{kg m}^{-2}\text{s}^{-1}$, and ‘air temperature’ in K. The variables C_s and R_h were used to obtain values for soil carbon turnover time (τ_s) in years, using the equation $\tau_s = C_s / (R_h \times 86400 \times 365)$. The model temperature variable units were converted from K to °C.

For each model, these values of $\log \tau_s$ were plotted against the corresponding spatial temperature data to obtain the spatial $\log \tau_s$ -temperature plot. Then, quadratic fits (using the python package numpy polyfit) are calculated for each model, which represent the spatial $\log \tau_s$ relationship and sensitivity to temperature. These model specific relationships are shown by the coloured lines in Fig. 3a in the main manuscript, and in Supplementary Fig. 2 for CMIP6 and in Supplementary Fig. 3 for CMIP5.

Obtaining spatial relationships for observations. Following Koven et al.¹⁶, we estimated observational soil carbon data (to a depth of 1 m) by combining the Harmonized World Soils Database (HWSD)¹⁹ and Northern Circumpolar Soil Carbon Database (NCSCD)²⁰ soil carbon datasets, where NCSCD was used where overlap occurs. To calculate soil carbon turnover time, τ_s , using the following equation: $\tau_s = C_s / R_h$, we require a global observational dataset for heterotrophic respiration. In the main manuscript, CARDAMOM (2001–2010) heterotrophic respiration (R_h) is used²¹. We completed a sensitivity study on the choice of observational heterotrophic respiration dataset, see below. The WFDEI dataset is

used for our observational air temperatures (2001–2010)²⁴. Then, these datasets can be used to obtain the observational $\log \tau_s$ -temperature relationship, using the same quadratic fitting as with the models. This represents the ‘real world’ spatial temperature sensitivity of $\log \tau_s$, and is shown by the thick-dotted-black line in Fig. 3a of the main manuscript. A comparison of the derived observational relationships can be seen in Supplementary Fig. 6.

Observational sensitivity study. We completed a sensitivity study to investigate our constraint dependence on the choice of observational heterotrophic respiration dataset (CARDAMOM (2001–2010)²¹). The other observational datasets considered are as follows: NDP-08 ‘Interannual Variability in Global Soil Respiration on a 0.5 Degree Grid Cell Basis’ dataset (1980–1994)²⁹, ‘Global spatiotemporal distribution of soil respiration modelled using a global database’³⁰, and MODIS net primary productivity (NPP) (2000–2014)³¹. Supplementary Fig. 4 shows scatter plots showing one-to-one comparisons of these observational datasets against one another, and Supplementary Fig. 5 shows the corresponding comparisons of the equivalent $\log \tau_s$ values calculated from each dataset.

The CARDAMOM R_h dataset is used in the main manuscript for the following two main reasons: firstly, we calculate τ_s using heterotrophic respiration which allows for consistency between models and observations, and secondly, the dataset does not use a prescribed q_{10} sensitivity²¹. Instead, the CARDAMOM R_h dataset was derived by explicitly assimilating observations into a process-based diagnostic land-surface model. To test the robustness of our results, we also repeated our analysis with MODIS NPP and Raich 2002, for both CMIP6 and CMIP5 together, and as separate model ensembles. Supplementary Fig. 6 shows the observational $\log \tau_s$ -temperature relationships, derived using each of these observational datasets. The results are presented in Table 1 which shows the constrained values of $\Delta C_{s,\tau}$ at 2 °C global mean warming.

We decided not to complete the paper analysis using the Hashimoto dataset since not only is it inconsistent with the three other datasets considered, it also shows an arbitrary maximum respiration level (Supplementary Fig. 4), which likely results from the assumed temperature-dependence of soil respiration in this dataset which takes a quadratic form³⁰. The quadratic form is justified based on a site-level study in which it is used to fit temporal dynamics. However, the parameters for the quadratic function that are fitted in the Hashimoto study are very different from those in the site-level study, which therefore suggests that the same relationship does not apply to the global distribution of mean annual soil respiration.

Equation for the soil carbon turnover time component of soil carbon change.

The equation used in this study for the component of the change in soil carbon (ΔC_s) due to the change in soil carbon turnover time ($\Delta \tau_s$) was derived in the following way. Starting with the equation for soil carbon (based on the definition of τ_s):

$$C_s = R_h \tau_s \quad (2)$$

As discussed in the main manuscript, we can write this change in soil carbon (ΔC_s), as the sum of a term arising from changes in litter-fall ($\Delta C_{s,L}$), and a term arising from changes in the turnover time of soil carbon ($\Delta C_{s,\tau}$):

$$\Delta C_s = \Delta(R_h \tau_s) \approx \Delta C_{s,L}(t) + \Delta C_{s,\tau}(t) = \tau_{s,0} \Delta R_h(t) + R_{h,0} \Delta \tau_s(t) \quad (3)$$

Hence, the equation for the component of soil carbon change due to the change in τ_s is:

$$\Delta C_{s,\tau} = R_{h,0} \Delta \tau_s \quad (4)$$

In this study we use R_h from the reference period (‘present day’), which we call $R_{h,0}$, to allow us to investigate the response of $\Delta C_{s,\tau}$ as a result of the response of τ_s to climate change.

Modelled future temperature. The proof of principle figure (Fig. 3b) considers $\Delta C_{s,\tau}$ between the end of the 21st century (2090–2100), for each future SSP scenario (SSP126, SSP245, SSP585)²² or equivalent future RCP scenario (RCP2.6, RCP4.5 and RCP8.5)²³, and our reference period from the historical simulation (1995–2005), for each CMIP6 ESM and CMIP5 ESM, respectively.

To consider specific °C of global warming (Fig. 4), the future spatial temperature profiles at these specific global mean warming levels, for example: 1 °C, 2 °C and 3 °C global mean warming, were calculated as follows. The temperature change is calculated from our reference period (1995–2005), and then a 5-year rolling mean of global mean temperature is taken to remove some of the interannual variability. Once the year that the given temperature increase has been reached is obtained, a time average including –5 and +5 years is taken, and the spatial temperature distribution of that model averaged over the deduced time period is used for the calculations of future τ_s .

Anomaly correction for future temperature projections. To remove uncertainty due to errors in the models’ historical simulation, a spatial future temperature anomaly was projected using each model and each respective future SSP/RCP scenario separately. To calculate this, the temperature at the reference time frame (1995–2005), which overlaps the WFDEI observational temperature data time frame (2001–2010), is subtracted from the future temperature profile for each

model (as calculated above), to calculate the temperature change. Then, this temperature anomaly is added onto the observational temperature dataset to give a model-derived future ‘observational’ temperature for each model.

Proof of concept for our method. Our method relies on the idea that the spatial temperature sensitivity can be used to project and constrain the temporal sensitivity of τ_s to temperature, and subsequently global warming. To test the robustness of this method, $\Delta C_{s,\tau}$ calculated using model $\Delta \tau_s$, and temperature sensitivity relationship-derived $\Delta \tau_s$, are compared.

The change in soil carbon turnover time ($\Delta \tau_s$) was either calculated using model output data to obtain model-derived $\Delta \tau_s$ as follows:

$$\Delta \tau_s = \tau_s^f - \tau_s^h \quad (5)$$

where,

$$\tau_s = C_s/R_h \quad (6)$$

Or calculated using the derived quadratic $\log \tau_s$ -temperature relationships to obtain relationship-derived $\Delta \tau_s$, which is based on the following equation:

$$\Delta \tau_s = \exp(p(T^f)) - \exp(p(T^h)) \quad (7)$$

where, T is near surface air temperature, and T^f represents a future temperature, and T^h represents historical (present day) temperature from our reference period (1995–2005). The exponentials (\exp) are taken to turn $\log \tau_s$ values to τ_s values. $p(T)$ represents the quadratic $\log \tau_s$ -temperature relationship as a function of temperature to obtain our estimated $\log \tau_s$.

These $\Delta \tau_s$ values are then put back into the Eq. (4) (with model-specific $R_{h,0}$) to obtain the corresponding $\Delta C_{s,\tau}$ values. The proof of principle figure (Fig. 3b) investigates the robustness of our method, where projections of model and relationship-derived values of $\Delta C_{s,\tau}$ are compared, and an r^2 value of 0.90 is obtained. The correlation of the data was also tested when investigating different levels of global mean warming to obtain the constrained values (Fig. 4). The r^2 values for were as follows: 1 °C is 0.84, 2 °C is 0.87 and 3 °C is 0.87.

Calculating constrained values. To obtain the constrained values of $\Delta C_{s,\tau}$, the model-derived future ‘observational’ temperature for each model is used together with the observational derived $\log \tau_s$ -temperature relationship, to project values for future τ_s . Then this together with relationship-derived historical τ_s deduced using the observational temperature dataset, can be used to calculate $\Delta \tau_s$. Finally global $\Delta C_{s,\tau}$ can be obtained by multiplying $\Delta \tau_s$ by the observational dataset for $R_{h,0}$ (using Eq. (4)), and then calculating a weighted-global total. As each model-derived future ‘observational’ temperature is considered separately, we obtain a range of projected observational-constrained $\Delta C_{s,\tau}$ values.

We have now obtained a set of x and y values, corresponding to the relationship-derived and modelled values of $\Delta C_{s,\tau}$, respectively, for each ESM. Where we have an x and y value for each model, representing the modelled $\Delta C_{s,\tau}$ (y values), and the model specific relationship-derived $\Delta C_{s,\tau}$ (x values). We also have an x_{obs} value representing the mean observational-constrained $\Delta C_{s,\tau}$ value, and a corresponding standard deviation due to the uncertainty in the modelled spatial profiles of future temperatures. We follow the method used in Cox et al. 2018, which can be seen in the ‘Least-squares linear regression’ section and the ‘Calculation of the PDF for ECS’ section of the methods from this study³². Using this method, we obtain an emergent relationship between our x and y data points, which we can use together with our x_{obs} and corresponding standard deviation to produce a constraint on our y -axis. This is shown in Fig. 4a. From this we obtain a constrained probability density function on $\Delta C_{s,\tau}$ with a corresponding uncertainty bounds which we consider at the 68% confidence limits (± 1 standard deviation). Figure 4b show the probability density functions representing the distribution of the range of projections, before and after the constraint.

This method allows us to calculate a constrained probability density function on $\Delta C_{s,\tau}$ at each °C of global mean warming, using the data seen in Fig. 4a for 2 °C warming, and our corresponding constrained values for 1 °C and 3 °C warming. Figure 4c shows the resultant constrained mean value of $\Delta C_{s,\tau}$ obtained for each °C of global mean warming, and the corresponding uncertainty bounds at the 68% confidence limits (± 1 standard deviation).

Calculating effective q_{10} for change in soil carbon. Simple models of soil carbon turnover are often based on just a q_{10} function, which means that τ_s depends on temperature as follows:

$$\tau_s = \tau_{s,0} \exp((-0.1 \log q_{10}) \Delta T) \quad (8)$$

We compared the results for $\Delta C_{s,\tau}$ that would be derived from a simple q_{10} function with our emergent constraint results for $\Delta C_{s,\tau}$, to estimate an effective q_{10} sensitivity of heterotrophic respiration.

To do this, we can obtain an equation for $\Delta \tau_s$ derived from Eq. (8). This is done by considering the following, where $\tau_{s,0}$ is an initial τ_s , we can substitute in τ_s in temperature sensitivity form to obtain an equation for $\Delta \tau_s$ in temperature sensitivity form:

$$\Delta \tau_s = \tau_s - \tau_{s,0} \quad (9)$$

$$\Delta\tau_s = \tau_{s,0} \exp((-0.1 \log q_{10})\Delta T) - \tau_{s,0} \quad (10)$$

Then, we can substitute this $\Delta\tau_s$ into Eq. (4) and simplify to obtain an equation relating $\Delta C_{s,\tau}$ and ΔT :

$$\Delta C_{s,\tau} = R_{h,0} \tau_{s,0} [\exp((-0.1 \log q_{10})\Delta T) - 1] \quad (11)$$

$$\Delta C_{s,\tau} = C_{s,0} [\exp((-0.1 \log q_{10})\Delta T) - 1] \quad (12)$$

This equation was used to calculate different $\Delta C_{s,\tau}$ - ΔT sensitivity curves based on different values on q_{10} , for example $q_{10} = 2$, with different amounts of global mean warming to represent ΔT , and initial observational soil carbon stocks $C_{s,0}$. These curves can be seen on Figs. 1b and 4c. Note that there is no direct relationship between the effective q_{10} for soil carbon change shown in Figs. 1b and 4c, and the spatial τ_s - T relationships in Fig. 3a. Our q_{10} value is an effective q_{10} value that indicates the sensitivity of global soil carbon (in the top 1 metre) to global mean temperature.

Data availability

The datasets analysed during this study are available online: CMIP5 model output [<https://esgf-node.llnl.gov/search/CMIP5/>], CMIP6 model output [<https://esgf-node.llnl.gov/search/cmip6/>], The WFDEI Meteorological Forcing Data [<https://rda.ucar.edu/datasets/ds314.2/>], CARDAMOM Heterotrophic Respiration [<https://datashare.is.ed.ac.uk/handle/10283/875/>], MODIS Net Primary Production [<https://lpdaac.usgs.gov/products/mod17a3v055/>], Raich et al. 2002 Soil Respiration [<https://cdiac.ess-dive.lbl.gov/epubs/ndp/ndp081/ndp081.html>], Hashimoto et al. 2015 Heterotrophic Respiration [<http://cse.ffpri.affrc.go.jp/shojih/data/index.html>], and the datasets for observational Soil Carbon [https://github.com/rebeccamayvarney/soiltau_ec].

Code availability

The Python code used to complete the analysis and produce the figures in this study is available in the following online repository [https://github.com/rebeccamayvarney/soiltau_ec].

Received: 13 January 2020; Accepted: 17 September 2020;

Published online: 02 November 2020

References

- Ciais, P. et al. Carbon and other biogeochemical cycles. In *Climate Change 2013: The Physical Science Basis. Contribution of Working Group I to the Fifth Assessment Report of the Intergovernmental Panel on Climate Change*, Book section 6, (eds. Stocker, T. et al.) 465–570 (Cambridge University Press, Cambridge, New York, 2013).
- UNFCCC. *Adoption of the Paris Agreement*. fccc/cp/2015/l.9/rev.1. <http://unfccc.int/resource/docs/2015/cop21/eng/l09r01.pdf> (2015).
- Jenkinson, D. S., Adams, D. & Wild, A. Model estimates of CO₂ emissions from soil in response to global warming. *Nature* **351**, 304 (1991).
- Cox, P. M., Betts, R. A., Jones, C. D., Spall, S. A. & Totterdell, I. J. Acceleration of global warming due to carbon-cycle feedbacks in a coupled climate model. *Nature* **408**, 184 (2000).
- Bradford, M. A. et al. Managing uncertainty in soil carbon feedbacks to climate change. *Nat. Clim. Change* **6**, 751 (2016).
- Todd-Brown, K. et al. Changes in soil organic carbon storage predicted by earth system models during the 21st century. *Biogeosciences* **11**, 2341–2356 (2014).
- Arora, V. K. et al. Carbon–concentration and carbon–climate feedbacks in CMIP5 earth system models. *J. Clim.* **26**, 5289–5314 (2013).
- Jones, C. et al. Twenty-first-century compatible CO₂ emissions and airborne fraction simulated by CMIP5 earth system models under four representative concentration pathways. *J. Clim.* **26**, 4398–4413 (2013).
- Knorr, W., Prentice, I. C., House, J. & Holland, E. Long-term sensitivity of soil carbon turnover to warming. *Nature* **433**, 298 (2005).
- Todd-Brown, K. et al. Causes of variation in soil carbon simulations from CMIP5 earth system models and comparison with observations. *Biogeosciences* **10**, 1717–1736 (2013).
- Eyring, V. et al. Overview of the coupled model intercomparison project phase 6 (CMIP6) experimental design and organization. *Geosci. Model Dev.* **9**, 1937–1958 (2016).
- Taylor, K. E., Stouffer, R. J. & Meehl, G. A. An overview of CMIP5 and the experiment design. *Bull. Am. Meteorol. Soc.* **93**, 485–498 (2012).
- Koven, C. D. et al. Controls on terrestrial carbon feedbacks by productivity versus turnover in the CMIP5 earth system models. *Biogeosciences* **12**, 5211–5228 (2015).
- Hall, A., Cox, P., Huntingford, C. & Klein, S. Progressing emergent constraints on future climate change. *Nat. Clim. Change* **9**, 269–278 (2019).
- Chadburn, S. et al. An observation-based constraint on permafrost loss as a function of global warming. *Nat. Clim. Change* **7**, 340 (2017).

- Koven, C. D., Hugelius, G., Lawrence, D. M. & Wieder, W. R. Higher climatological temperature sensitivity of soil carbon in cold than warm climates. *Nat. Clim. Change* **7**, 817 (2017).
- Carvalhais, N. et al. Global covariation of carbon turnover times with climate in terrestrial ecosystems. *Nature* **514**, 213 (2014).
- Davidson, E. A. & Janssens, I. A. Temperature sensitivity of soil carbon decomposition and feedbacks to climate change. *Nature* **440**, 165 (2006).
- FAO, I. & ISRIC, I. Jrc: Harmonized world soil database (version 1.2). FAO, Rome, Italy and IIASA, (Laxenburg, Austria, 2012).
- Hugelius, G. et al. The northern circumpolar soil carbon database: spatially distributed datasets of soil coverage and soil carbon storage in the northern permafrost regions. *Earth System Science Data* **5**, 3–13 (2013).
- Bloom, A. et al. CARDAMOM 2001–2010 global carbon model-data fusion (mdf) analysis. (2015).
- O'Neill, B. C. et al. The scenario model intercomparison project (scenariomip) for CMIP6 (2016).
- Meinshausen, M. et al. The rcp greenhouse gas concentrations and their extensions from 1765 to 2300. *Clim. Change* **109**, 213 (2011).
- Weedon, G. P. et al. The wfdei meteorological forcing data set: watch forcing data methodology applied to era-interim reanalysis data. *Water Res. Res.* **50**, 7505–7514 (2014).
- Exbrayat, J.-F., Pitman, A. J., Zhang, Q., Abramowitz, G. & Wang, Y.-P. Examining soil carbon uncertainty in a global model: response of microbial decomposition to temperature, moisture and nutrient limitation. *Biogeosciences* **10**, 7095–7108 (2013).
- Eyring, V. et al. Taking climate model evaluation to the next level. *Nat. Clim. Change* **9**, 102–110 (2019).
- Cox, P. M. et al. Sensitivity of tropical carbon to climate change constrained by carbon dioxide variability. *Nature* **494**, 341 (2013).
- Wenzel, S., Cox, P. M., Eyring, V. & Friedlingstein, P. Projected land photosynthesis constrained by changes in the seasonal cycle of atmospheric CO₂. *Nature* **538**, 499 (2016).
- Raich, J. W., Potter, C. S. & Bhagawati, D. Interannual variability in global soil respiration, 1980–94. *Global Change Biol.* **8**, 800–812 (2002).
- Hashimoto, S. et al. Global spatiotemporal distribution of soil respiration modeled using a global database. *Biogeosci.* **12**, 4121–4132 (2015).
- Zhao, M., Heinsch, F. A., Nemani, R. R. & Running, S. W. Improvements of the modis terrestrial gross and net primary production global data set. *Remote Sens. Environ.* **95**, 164–176 (2005).
- Cox, P. M., Huntingford, C. & Williamson, M. S. Emergent constraint on equilibrium climate sensitivity from global temperature variability. *Nature* **553**, 319 (2018).

Acknowledgements

This work was supported by the European Research Council ‘Emergent Constraints on Climate-Land feedbacks in the Earth System (ECCLES)’ project, grant agreement number 742472 (R.M.V. and P.M.C.). S.E.C. was supported by a Natural Environment Research Council independent research fellowship, grant no. NE/R015791/1. P.F. was supported by the European Union’s Framework Programme Horizon 2020 for Research and Innovation under Grant Agreement No. 821003, Climate-Carbon Interactions in the Current Century (4C) project. E.J.B. was funded by the European Commission’s Horizon 2020 Framework Programme, under Grant Agreement number 641816, the ‘Coordinated Research in Earth Systems and Climate: Experiments, Knowledge, Dissemination and Outreach (CRESCENDO)’ project (11/2015–10/2020) and the Met Office Hadley Centre Climate Programme funded by BEIS and Defra. C.D.K. acknowledges support from the U.S. Department of Energy, Office of Science, Office of Biological and Environmental Research, through the RUBISCO SFA and the Early Career Research Program. G.H. was supported by the Swedish Research Council (2018-04516) and the EU H2020 project Nunataryuk (773421). We also acknowledge the World Climate Research Programme’s Working Group on Coupled Modelling, which is responsible for CMIP, and we thank the climate modelling groups (listed in Tables 2 and 3 in the ‘Methods’ section) for producing and making available their model output.

Author contributions

R.M.V., S.E.C., and P.M.C. designed the study and drafted the manuscript, and R.M.V. did the analysis and produced the figures. P.F. provided insightful guidance on the best way to derive and represent soil carbon turnover. C.D.K. provided the initial code and gave advice on the differing representation of soil carbon in the CMIP6 model ensemble. E.J.B. provided observational datasets for: heterotrophic respiration, soil respiration, net primary production and temperature. G.H. provided observational soil carbon data. All co-authors provided guidance on the study at various times and suggested edits to the draft manuscript.

Competing interests

The authors declare no competing interests.

Additional information

Supplementary information is available for this paper at <https://doi.org/10.1038/s41467-020-19208-8>.

Correspondence and requests for materials should be addressed to R.M.V.

Peer review information *Nature Communications* thanks the anonymous reviewers for their contributions to the peer review of this work.

Reprints and permission information is available at <http://www.nature.com/reprints>

Publisher's note Springer Nature remains neutral with regard to jurisdictional claims in published maps and institutional affiliations.



Open Access This article is licensed under a Creative Commons Attribution 4.0 International License, which permits use, sharing, adaptation, distribution and reproduction in any medium or format, as long as you give appropriate credit to the original author(s) and the source, provide a link to the Creative Commons license, and indicate if changes were made. The images or other third party material in this article are included in the article's Creative Commons license, unless indicated otherwise in a credit line to the material. If material is not included in the article's Creative Commons license and your intended use is not permitted by statutory regulation or exceeds the permitted use, you will need to obtain permission directly from the copyright holder. To view a copy of this license, visit <http://creativecommons.org/licenses/by/4.0/>.

© The Author(s) 2020