



**Cochrane**  
**Library**

Cochrane Database of Systematic Reviews

## Exercise-based cardiac rehabilitation for adults with stable angina (Review)

Long L, Anderson L, Dewhurst AM, He J, Bridges C, Gandhi M, Taylor RS

Long L, Anderson L, Dewhurst AM, He J, Bridges C, Gandhi M, Taylor RS.  
Exercise-based cardiac rehabilitation for adults with stable angina.  
*Cochrane Database of Systematic Reviews* 2018, Issue 2. Art. No.: CD012786.  
DOI: 10.1002/14651858.CD012786.pub2.

[www.cochranelibrary.com](http://www.cochranelibrary.com)

## TABLE OF CONTENTS

HEADER . . . . .	1
ABSTRACT . . . . .	1
PLAIN LANGUAGE SUMMARY . . . . .	2
SUMMARY OF FINDINGS FOR THE MAIN COMPARISON . . . . .	4
BACKGROUND . . . . .	7
OBJECTIVES . . . . .	8
METHODS . . . . .	8
RESULTS . . . . .	12
Figure 1. . . . .	13
Figure 2. . . . .	14
Figure 3. . . . .	15
DISCUSSION . . . . .	18
AUTHORS' CONCLUSIONS . . . . .	19
ACKNOWLEDGEMENTS . . . . .	20
REFERENCES . . . . .	20
CHARACTERISTICS OF STUDIES . . . . .	23
DATA AND ANALYSES . . . . .	41
Analysis 1.1. Comparison 1 Exercise versus no exercise for stable angina, Outcome 1 All-cause mortality. . . . .	41
Analysis 1.2. Comparison 1 Exercise versus no exercise for stable angina, Outcome 2 Acute myocardial infarction (AMI). . . . .	42
Analysis 1.3. Comparison 1 Exercise versus no exercise for stable angina, Outcome 3 Revascularisation procedure (CABG or PCI). . . . .	43
Analysis 1.4. Comparison 1 Exercise versus no exercise for stable angina, Outcome 4 Exercise capacity. . . . .	44
Analysis 1.5. Comparison 1 Exercise versus no exercise for stable angina, Outcome 5 Cardiovascular-related hospital admissions. . . . .	45
APPENDICES . . . . .	45
CONTRIBUTIONS OF AUTHORS . . . . .	50
DECLARATIONS OF INTEREST . . . . .	50
SOURCES OF SUPPORT . . . . .	50
DIFFERENCES BETWEEN PROTOCOL AND REVIEW . . . . .	51

[Intervention Review]

# Exercise-based cardiac rehabilitation for adults with stable angina

Linda Long<sup>1</sup>, Lindsey Anderson<sup>1</sup>, Alice M Dewhurst<sup>1</sup>, Jingzhou He<sup>2</sup>, Charlene Bridges<sup>3</sup>, Manish Gandhi<sup>2</sup>, Rod S Taylor<sup>1</sup>

<sup>1</sup>Institute of Health Research, University of Exeter Medical School, Exeter, UK. <sup>2</sup>Cardiology, Royal Devon & Exeter NHS Foundation Trust Hospital, Exeter, UK. <sup>3</sup>Farr Institute of Health Informatics Research, University College London, London, UK

Contact address: Rod S Taylor, Institute of Health Research, University of Exeter Medical School, Exeter, UK. [r.taylor@exeter.ac.uk](mailto:r.taylor@exeter.ac.uk).

**Editorial group:** Cochrane Heart Group.

**Publication status and date:** New, published in Issue 2, 2018.

**Citation:** Long L, Anderson L, Dewhurst AM, He J, Bridges C, Gandhi M, Taylor RS. Exercise-based cardiac rehabilitation for adults with stable angina. *Cochrane Database of Systematic Reviews* 2018, Issue 2. Art. No.: CD012786. DOI: 10.1002/14651858.CD012786.pub2.

Copyright © 2018 The Cochrane Collaboration. Published by John Wiley & Sons, Ltd.

## ABSTRACT

### Background

A previous Cochrane review has shown that exercise-based cardiac rehabilitation (CR) can benefit myocardial infarction and post-revascularisation patients. However, the impact on stable angina remains unclear and guidance is inconsistent. Whilst recommended in the guidelines of American College of Cardiology/American Heart Association and the European Society of Cardiology, in the UK the National Institute for Health and Care Excellence (NICE) states that there is “no evidence to suggest that CR is clinically or cost-effective for managing stable angina”.

### Objectives

To assess the effects of exercise-based CR compared to usual care for adults with stable angina.

### Search methods

We updated searches from the previous Cochrane review ‘Exercise-based cardiac rehabilitation for patients with coronary heart disease’ by searching the Cochrane Central Register of Controlled Trials (CENTRAL), MEDLINE, Embase, DARE, CINAHL and Web of Science on 2 October 2017. We searched two trials registers, and performed reference checking and forward-citation searching of all primary studies and review articles, to identify additional studies.

### Selection criteria

We included randomised controlled trials (RCTs) with a follow-up period of at least six months, which compared structured exercise-based CR with usual care for people with stable angina.

### Data collection and analysis

Two review authors independently assessed the risk of bias and extracted data according to the *Cochrane Handbook for Systematic Reviews of Interventions*. Two review authors also independently assessed the quality of the evidence using GRADE principles and we presented this information in a ‘Summary of findings’ table.

## Main results

Seven studies (581 participants) met our inclusion criteria. Trials had an intervention length of 6 weeks to 12 months and follow-up length of 6 to 12 months. The comparison group in all trials was usual care (without any form of structured exercise training or advice) or a no-exercise comparator. The mean age of participants within the trials ranged from 50 to 66 years, the majority of participants being male (range: 74% to 100%). In terms of risk of bias, the majority of studies were unclear about their generation of the randomisation sequence and concealment processes. One study was at high risk of detection bias as it did not blind its participants or outcome assessors, and two studies had a high risk of attrition bias due to the numbers of participants lost to follow-up. Two trials were at high risk of outcome reporting bias. Given the high risk of bias, small number of trials and participants, and concerns about applicability, we downgraded our assessments of the quality of the evidence using the GRADE tool.

Due to the very low-quality of the evidence base, we are uncertain about the effect of exercise-based CR on all-cause mortality (risk ratio (RR) 1.01, 95% confidence interval (CI) 0.18 to 5.67; 195 participants; 3 studies; very low-quality evidence), acute myocardial infarction (RR 0.33, 95% CI 0.07 to 1.63; 254 participants; 3 studies; very low-quality evidence) and cardiovascular-related hospital admissions (RR 0.14, 95% CI 0.02 to 1.1; 101 participants; 1 study; very low-quality evidence). We found low-quality evidence that exercise-based CR may result in a small improvement in exercise capacity compared to control (standardised mean difference (SMD) 0.45, 95% CI 0.20 to 0.70; 267 participants; 5 studies, low-quality evidence). We were unable to draw conclusions about the impact of exercise-based CR on quality of life (angina frequency and emotional health-related quality-of-life score) and CR-related adverse events (e.g. skeletomuscular injury, cardiac arrhythmia), due to the very low quality of evidence. No data were reported on return to work.

## Authors' conclusions

Due to the small number of trials and their small size, potential risk of bias and concerns about imprecision and lack of applicability, we are uncertain of the effects of exercise-based CR compared to control on mortality, morbidity, cardiovascular hospital admissions, adverse events, return to work and health-related quality of life in people with stable angina. Low-quality evidence indicates that exercise-based CR may result in a small increase in exercise capacity compared to usual care. High-quality, well-reported randomised trials are needed to assess the benefits and harms of exercise-based CR for adults with stable angina. Such trials need to collect patient-relevant outcomes, including clinical events and health-related quality of life. They should also assess cost-effectiveness, and recruit participants that are reflective of the real-world population of people with angina.

## PLAIN LANGUAGE SUMMARY

### Exercise-based cardiac rehabilitation for people with stable angina

#### Review question

Is exercise-based cardiac rehabilitation for people with stable angina helpful in improving their condition?

#### Background

Stable angina is a form of chronic heart disease associated with ill health and increased death rates. Exercise-based cardiac rehabilitation is a programme that helps people with heart disease gain better health. It usually involves exercising and receiving advice on ways to improve health and takes place at hospitals or within the community or at home. The National Institute for Health and Care Excellence in the United Kingdom does not currently recommend cardiac rehabilitation programmes for people with angina, while European and United States guidelines do. In this review, we look at whether cardiac rehabilitation is helpful to people with stable angina. Specifically we assess whether cardiac rehabilitation is helpful in reducing death rates, the need for surgery, repeated heart attacks, healthcare usage and costs; and improving quality of life, physical fitness levels, and symptoms of angina.

#### Study characteristics

The evidence is current to 2 October 2017. We included seven studies that randomly allocated a total of 581 participants with stable angina to either receive cardiac rehabilitation or no exercise control. We identified that there are no ongoing randomised studies. The average age of participants ranged from 50 to 66 years. The majority of people recruited were middle-aged men. Most studies were carried out in European countries and one study in India. Cardiac rehabilitation was most commonly delivered in a combined setting of home and centre or hospital. The length of the cardiac rehabilitation programmes ranged from six weeks to one year.

#### Key results

There is insufficient evidence to assess the impact of exercise-based cardiac rehabilitation on the outcomes that matter most to patients: risks of death, heart attack, or future cardiac operation and quality of life. There may be a small improvement in physical fitness following exercise-based cardiac rehabilitation compared to usual treatment. There was no evidence about returning to work.

### **Quality of the evidence**

Due to the poor reporting, high risk of bias and small number of trials and participants included in this review, our assessment of the quality of the evidence ranged from low to very low across outcomes. For low-quality evidence our confidence in the result is limited, and for very low-quality evidence we have very little confidence in the result.

### **Conclusions**

We need more high-quality studies in more representative populations of people with stable angina. These studies should collect outcomes of relevance to patients and healthcare decision-makers. Then we will be able to better assess the impact of exercise-based cardiac rehabilitation.

## SUMMARY OF FINDINGS FOR THE MAIN COMPARISON *[Explanation]*

Exercise-based cardiac rehabilitation (CR) compared to usual care for patients with stable angina						
<b>Patient or population:</b> adults with stable angina <b>Setting:</b> hospital, outpatient clinic, community or home-based environment <b>Intervention:</b> exercise-based cardiac rehabilitation <b>Comparison:</b> usual care (standard medical care but without any structured training or advice on structured exercise training)						
Outcomes	Anticipated absolute effects* (95% CI)		Relative effect (95% CI)	No of participants (studies)	Quality of the evidence (GRADE)	Comments
	Risk with usual care	Risk with exercise-based cardiac rehabilitation				
All-cause mortality Follow-up: 12 months	Study population		RR 1.01 (0.18 to 5.67)	195 (3 RCTs)	⊕○○○ VERY LOW <sup>1,2,3</sup>	We are uncertain about the effect of exercise-based CR on all-cause mortality compared to usual care
	20 per 1,000	21 per 1,000 (4 to 116)				
Acute myocardial infarction (AMI) Follow-up: 12 months	Study population		RR 0.33 (0.07 to 1.63)	254 (3 RCTs)	⊕○○○ VERY LOW <sup>2,3,5</sup>	We are uncertain about the effect of exercise-based CR on AMI compared to usual care
	39 per 1,000	13 per 1,000 (3 to 64)				
Exercise capacity (assessed using a variety of outcomes including VO <sub>2</sub> max and duration of exercise) Follow-up: range 6 to 12 months	The mean exercise capacity in the intervention groups was 0.45 standard deviations higher (0.2 higher to 0.7 higher)			267 (5 RCTs)	⊕⊕○○ LOW <sup>4,6</sup>	Using Cohen's rule of thumb a SMD of 0.2 represents a small effect, 0.5 a moderate effect and 0.8 a large effect between groups (Cohen 1988). Exercise-based CR may slightly improve exercise capacity compared to usual care

Cardiovascular-related hospital admissions (assessed with: combined clinical endpoint (cardiac death, stroke, CABG, PCI, AMI, worsening angina with objective evidence resulting in hospitalisation)) Follow-up: 12 months	Study population  140 per 1000      20 per 1000 (2 to 154)	RR 0.14 (0.02 to 1.1)	101 (1 RCT)	⊕○○○ VERY LOW <sup>2,7,9</sup>	We are uncertain about the effect of exercise-based CR on cardiovascular-related hospital admissions compared to usual care
Health-related quality of life (assessed with: Seattle Angina Questionnaire and The MacNew Questionnaire) Follow-up: range 6 weeks to 6 months	One study showed improvement in emotional score at 6-week follow up, and benefits in angina frequency and social HRQL score at 6 months follow-up	Not estimable	94 (1 RCT)	⊕○○○ VERY LOW <sup>8,9</sup>	We are uncertain about the effect of exercise-based CR on quality of life compared to usual care
Return to work	No studies were found that looked at return to work.				
Adverse events (e.g. skeletomuscular injury) Follow-up: 12 months	Only one study looked at adverse events and reported that there were no adverse events during the exercise-based CR	Not estimable	101 (1 RCT)	⊕○○○ VERY LOW <sup>2,7,9</sup>	We are uncertain about the effect of exercise-based CR on adverse events compared to usual care

\* **The risk in the intervention group** (and its 95% confidence interval) is based on the assumed risk in the comparison group and the **relative effect** of the intervention (and its 95% CI).

**AMI:** acute myocardial infarction; **CABG:** coronary artery bypass graft; **CI:** confidence interval; **CR:** cardiac rehabilitation; **HRQL:** health-related quality of life; **PCI:** percutaneous coronary intervention; **RCT:** randomised controlled trial; **RR:** risk ratio

**GRADE Working Group grades of evidence**

**High quality:** We are very confident that the true effect lies close to that of the estimate of the effect

**Moderate quality:** We are moderately confident in the effect estimate: The true effect is likely to be close to the estimate of the effect, but there is a possibility that it is substantially different

**Low quality:** Our confidence in the effect estimate is limited: The true effect may be substantially different from the estimate of the effect

**Very low quality:** We have very little confidence in the effect estimate: The true effect is likely to be substantially different from the estimate of effect

- <sup>1</sup> Some concerns with random sequence generation, allocation concealment, blinding of outcome assessment and selective reporting; bias likely, therefore quality of evidence downgraded by one level
- <sup>2</sup> Some concern with applicability to review question as participants in all studies were limited to middle-aged men, therefore quality of evidence downgraded by one level
- <sup>3</sup> Imprecise due to small number of participants (less than 300) and confidence intervals including potential for important harm or benefit as 95% CI crosses RR of 0.75 and 1.25, therefore quality of evidence downgraded by two levels
- <sup>4</sup> Some concerns with random sequence generation, allocation concealment, blinding of outcome assessment, selective reporting and unbalanced groups at baseline; bias likely, therefore quality of evidence downgraded by one level
- <sup>5</sup> Some concern with random sequence generation, allocation concealment, blinding of outcome assessment, high loss to follow-up, selective reporting and unbalanced groups at baseline; serious bias likely, therefore quality of evidence downgraded by two levels
- <sup>6</sup> Imprecise due to small number of participants (less than 300) therefore quality of evidence downgraded by one level
- <sup>7</sup> Some concerns with random sequence generation, allocation concealment and selective reporting; bias likely, therefore quality of evidence downgraded by one level
- <sup>8</sup> Some concerns with blinding of outcome assessment, selective reporting and groups not receiving comparable care; bias likely, therefore quality of evidence downgraded by one level
- <sup>9</sup> Imprecise due to very small number of participants therefore quality of evidence downgraded by two levels



## BACKGROUND

### Description of the condition

Angina pectoris is traditionally defined as a pain, discomfort or tightness, most commonly felt in the chest, that may radiate to the neck, jaw and arms. It is typically reproducible, gradual in onset and offset and may be associated with breathlessness and nausea. Angina occurs when the coronary arteries become narrowed and myocardial oxygen demand exceeds oxygen supply. This leads to reversible myocardial ischaemia or hypoxia, particularly when oxygen demands are high, such as during exercise and stress. The complex mechanisms leading to symptoms of angina are not entirely understood. Importantly, acidosis results from myocardial ischaemia, causing the release of metabolites such as adenosine and bradykinin that stimulate the sympathetic afferent nerve pathway, eventually transmitting the painful stimuli to the brain (Crea 1990; Foreman 1999).

It was estimated that in 2013 over 1.3 million people in the UK had angina (BHF 2014) and it was thought to affect approximately 112 million people, or 1.6% of the population worldwide (Vos 2012). Data suggest an annual incidence of uncomplicated angina of 1.0% in western men aged 45 to 65 years, with a slightly higher incidence in women in this age bracket (Hemingway 2006; NHLBI 2012). Incidence increases with age in both men and women aged 75 to 84 years, reaching almost 4% (Hemingway 2006). However, age standardised angina prevalence decreased globally from 21.9 to 20.3 per 100,000 in males and from 17.7 to 15.9 in females between 1990 and 2010 (Moran 2014).

Angina is considered stable when there is no increase in frequency or severity of symptoms (NICE 2011). However, the transition from stable to unstable angina, is in reality, a continuum and without clear boundaries (Montalescot 2013). We define stable angina in this review as chest pain and associated symptoms precipitated by activity (e.g. running, walking) with minimal or non-existent symptoms at rest. We define unstable angina as chest pain and other symptoms of cardiovascular disease which are of new onset (previous four to six weeks), worsening, becoming more frequent and/or occurring at rest or minimal exertion. Despite the term “stable”, a diagnosis of stable angina is a chronic medical condition associated with a low but appreciable incidence of acute coronary events and increased mortality. Management options include lifestyle advice, drug therapy and revascularisation, which aim to minimise symptoms, and improve quality of life and long-term morbidity and mortality.

Although it can be precipitated by a number of conditions, stable angina is considered to be a symptom of coronary heart disease (CHD), which is the single most common cause of global mortality, and accounts for approximately one-third of all deaths worldwide, placing a major economic and resource burden on health-care systems (WHO 2014).

### Description of the intervention

As previously described (Anderson 2016), many definitions of cardiac rehabilitation (CR) have been proposed (for example, BACPR 2012; Balady 2011; WHO 1993). The following definition encompasses the key concepts of CR: “The coordinated sum of activities required to influence favourably the underlying cause of cardiovascular disease, as well as to provide the best possible physical, mental and social conditions, so that the patients may, by their own efforts, preserve or resume optimal functioning in their community and through improved health behaviour, slow or reverse progression of disease” (BACPR 2012). A complex intervention that may involve a variety of therapies, CR includes exercise, risk factor education, behaviour change, psychological support, and strategies that are aimed at targeting traditional risk factors for cardiovascular disease. Cardiac rehabilitation is an essential part of contemporary heart disease care and is considered a priority in countries with a high prevalence of CHD. Based on evidence from previous meta-analyses and systematic reviews, exercise-based CR following a cardiac event is a Class I recommendation from the American College of Cardiology/American Heart Association (Fihn 2012; Smith 2011) and the European Society of Cardiology (Montalescot 2013). Service provision, though predominantly hospital-based, varies markedly, and referral, enrolment and completion are sub-optimal, especially among women and older people (Beswick 2004; Clark 2012). Home-based CR programmes have been increasingly introduced to widen access and participation (Taylor 2010), and interventions aimed at improving patient uptake and adherence to CR programmes have been adopted (Karmali 2014).

Exercise-based CR in selected patient groups is remarkably safe. An observational study of more than 25,000 participants who underwent CR following cardiac surgery, recent percutaneous coronary intervention (PCI) or with other coronary and non-coronary conditions reported one cardiac event for 50,000 hours of exercise training, equivalent to 1.3 cardiac arrests per million patient-hours (Pavy 2006). An earlier study reported one case of ventricular fibrillation per 111,996 patient-hours of exercise and one myocardial infarction (MI) per 294,118 patient-hours (Van Camp 1986). However, people with unstable angina, uncontrolled ventricular arrhythmia, and severe heart failure (New York Heart Association level 4) have been considered at high risk, and careful assessment by an experienced clinician is recommended before they engage in the exercise component of CR (BACPR 2012). Historically, CR has often not been routinely offered to people with stable angina. Indeed, 20% of all CR programmes included in the 2009 UK national audit of CR, actively excluded stable angina (Lewin 2010). In the 2016 National Audit for Cardiac Rehabilitation Annual Report, it was outlined that angina referrals accounted for less than 4% of the 79,442 people receiving CR, although 24% of all participants were reported as having co-morbid angina at the point of entry to their CR programme (NACR 2016).

## How the intervention might work

The precise mechanisms by which CR improves mortality in people with CHD has not been fully elucidated. Exercise training has been shown to have direct benefits on the heart and coronary vasculature, including myocardial oxygen demand, endothelial function, autonomic tone, coagulation and clotting factors, inflammatory markers, and the development of coronary collateral vessels (Clausen 1976; Hambrecht 2000; Lavie 2015). However, it has been suggested that approximately half of the 28% reduction in cardiac mortality in people with CHD may also be mediated via the indirect effects of exercise through improvements in the risk factors for atherosclerotic disease (i.e. total cholesterol, smoking and blood pressure) (Taylor 2006). Further reductions in mortality may be attributed to reductions in psychological stress, including depression, anxiety and hostility (Lavie 2011).

## Why it is important to do this review

The American College of Cardiology/American Heart Association give a Class I recommendation that medically supervised CR programmes and physician-directed, home-based programs are offered to at-risk people with stable CHD including those with stable angina, at first diagnosis (Fihn 2012). Similarly, the European Society of Cardiology recommends that people with stable CHD, including stable angina, should undergo “moderate-to-vigorous intensity aerobic exercise training  $\geq 3$  times a week and for 30 min per session” (Montalescot 2013). The British Association for Cardiovascular Prevention and Rehabilitation (BACPR), recommend CR for people following a cardiac event, with heart failure, and to those with other established forms of cardiovascular disease, including stable angina (BACPR 2012).

Despite these guidelines, the current National Institute for Health and Care Excellence (NICE) guideline for the management of stable angina (CG126) states that there is “no evidence to suggest that CR is clinically or cost-effective for managing stable angina” (NICE 2011). NICE report that while there has been limited research on short-term outcomes such as a change in diet or exercise levels, the effect on morbidity and mortality has not been studied, and they highlight research into CR for this patient population as one of their key research recommendations (NICE 2011).

Previous Cochrane reviews have looked at the effect of exercise-based CR in people with CHD (Anderson 2016), heart failure (Taylor 2014) and after heart valve surgery (Sibiltz 2016). A meta-analysis of 63 trials, which randomised 14,486 people with CHD (including those with angina) to exercise-based CR or a no-exercise control, showed that exercise-based CR led to a reduction in cardiovascular mortality (risk ratio (RR) 0.74, 95% CI 0.64 to 0.86), hospital admissions (RR 0.82, 95% CI 0.70 to 0.96) and health-related quality of life (Anderson 2016). However, many trials in this review were in a mixed population of people with CHD (Anderson 2016). Given the NICE key research recom-

mendations, we believe there is a good case for separating out the evidence for CR in stable angina. Our scoping searches have confirmed that no systematic review has been previously conducted which has specifically assessed the impact of CR in a population in people with stable angina.

## OBJECTIVES

To assess the effects of exercise-based cardiac rehabilitation compared to usual care for adults with stable angina.

## METHODS

### Criteria for considering studies for this review

#### Types of studies

We included randomised controlled trials (RCTs) (individual patient allocation, cluster allocation, or cross-over) which compared exercise-based CR with a usual care or a no exercise comparator. We only included RCTs with a follow-up period of at least six months, in order to reflect current practice of guideline- and policy-writing, which is driven by long-term health benefits. Where studies had mixed populations, we included those in which 50% or more of participants had stable angina.

#### Types of participants

We included adult men and women aged 18 years or older who had been diagnosed with coronary heart disease (CHD) and had stable angina. We included participants who presented with stable or exertional angina (effort-induced chest discomfort), who were being treated with medical anti-anginal therapy and who may have had a previous myocardial infarction (MI), coronary artery bypass graft (CABG) or percutaneous coronary intervention (PCI). However, we excluded people in the immediate period following such an event, i.e. within three months of MI, PCI or CABG. We also excluded people with unstable angina (pain at rest) and those with refractory angina for whom revascularisation was planned. We included studies with a mixed population of people with CHD, where the data for people with stable angina and without any confounding co-morbidities were reported separately. We also included studies where the majority of the participant sample were reported to have stable angina, regardless of whether data for this sub-population was reported separately.

## Types of interventions

We sought exercise-based CR interventions either alone or as an element of a comprehensive CR programme including components such as health education, behavioural and psychological interventions or surgery in addition to the exercise intervention. The exercise-based intervention could have been supervised or unsupervised, and conducted in a hospital, community or home-based environment.

The control group received usual care which could have included standard medical care (such as drug therapy, health education, behavioural or psychological interventions, or surgery) but without any structured exercise training or advice on structured exercise training.

## Types of outcome measures

We were interested in the following outcomes with a minimum follow-up of six months.

### Primary outcomes

- All-cause mortality
- Morbidity (myocardial infarction (MI); revascularisation (CABG or PCI); or all-cause hospital admissions)
  - Health-related quality of life (HRQL) assessed using validated instruments (e.g. 36-Item Short Form Health Survey (SF-36), EQ-5D)
  - Exercise capacity assessed by validated outcome measure (e.g. VO<sub>2</sub>peak, 6-minute walk test)
  - Cardiovascular-related hospital admissions

### Secondary outcomes

- Severity of angina, assessed using validated instruments (e.g. Canadian Cardiovascular Society grading of angina pectoris; New York Heart Association Functional Classification of Angina)
  - Reported adverse events (clinical events relating to CR, e.g. skeletal muscular injuries or arrhythmias, or withdrawal from the intervention)
    - Return to work
    - Costs

Reporting one or more of the outcomes listed here in the trial was not an inclusion criterion for the review.

## Search methods for identification of studies

### Electronic searches

We identified trials through systematic searches of the following bibliographic databases up to 9 September 2016 and then updated this with a further search up to 2 October 2017:

- CENTRAL Issue 9 of 12, 2017 (Cochrane Library)
- Database of Abstracts of Reviews of Effects (DARE) Issue 2 of 4, 2015 (last issue, now ceased publication) (Cochrane Library)
  - Epub Ahead of Print, In-Process & Other Non-Indexed Citations, MEDLINE Daily and MEDLINE (Ovid, 1946 to 2 October 2017)
    - Embase (Ovid, 1980 to 2017 Week 40)
    - CINAHL Plus (EBSCO, 1937 to 2 October 2017)
    - Conference Proceedings Citation Index-Science (CPCI-S) in Web of Science Core Collection (Thomson Reuters, 1990 to 2 October 2017).

The search strategies were designed with reference to those of a previous related systematic review of exercise-based CR for CHD (Anderson 2016a). The preliminary search strategy for MEDLINE (Ovid) was adapted for use in the other databases (Appendix 1). We searched databases using a strategy combining selected MeSH terms and free-text terms relating to exercise-based rehabilitation and stable angina, with filters applied to limit to RCTs. We used the Cochrane sensitivity-maximising RCT filter for MEDLINE, and applied terms recommended in the *Cochrane Handbook for Systematic Reviews of Interventions* for Embase (Lefebvre 2011). We applied adaptations of this filter to CINAHL and Web of Science. We translated the MEDLINE search strategy for use with the other databases using the appropriate controlled vocabulary as applicable.

We searched all databases from their inception to the present, imposed no restriction on language of publication and gave consideration to variations in terms used and spellings of terms in different countries so that the search strategy would not miss studies because of such variations.

### Searching other resources

We hand-searched reference lists, and conducted forward citation searching of all primary studies and review articles for additional references not identified by the electronic searches. We conducted a search of trial registers on 30 November 2016: World Health Organization International Clinical Trials Registry Platform (WHO ICTRP; <http://www.who.int/ictip/en>) and ClinicalTrials.gov (<https://clinicaltrials.gov>) for ongoing clinical trials. We also contacted experts in the field for unpublished and ongoing trials and contacted trial authors where necessary for any additional information. We also examined any relevant retraction statements and errata for included studies.

## Data collection and analysis

### Selection of studies

Two review authors (AD and LA) independently screened titles and abstracts of all the potential studies we identified as a result of the search and coded them as 'retrieve' (eligible, or potentially eligible/unclear) or 'do not retrieve'. If there were any disagreements, three additional authors (RST, JH and MG) were asked to arbitrate. We retrieved the full-text study reports/publications and two review authors (AD and LA) independently screened the full-texts and identified studies for inclusion, and recorded reasons for exclusion of the ineligible studies. If there were any disagreements, three review authors (RST, JH and MG) were asked to arbitrate. We identified and excluded duplicates and collated multiple reports of the same study so that each study rather than each report was the unit of interest in the review. We recorded the selection process in sufficient detail to complete a PRISMA flow diagram (Figure 1) and [Characteristics of included studies](#) table.

### Data extraction and management

The study characteristics and outcome data from included studies were extracted independently by two reviewers (JH and shared between AD and LA), using a standardised data extraction form which had been piloted on at least one of the studies included in the review. Any disagreements were resolved by consensus or by consulting a third reviewer (RST). The following study characteristics were extracted.

- Methods: study design, total duration of study, number of study centres and location, study setting, withdrawals, and date of study.
- Participants: N, mean age, age range, gender, severity of condition, diagnostic criteria, inclusion criteria, and exclusion criteria.
- Interventions: intervention, comparison, and co-interventions.
- Outcomes: primary and secondary outcomes specified and collected, and time points reported.
- Notes: funding for trial, and notable conflicts of interest of trial authors.

AD transferred data into the Review Manager ([RevMan 2014](#)) file and LL double-checked that data were entered correctly by checking the study characteristics for accuracy against the study report.

### Assessment of risk of bias in included studies

LL, JH and AD independently assessed risk of bias for each study using the criteria outlined in the *Cochrane Handbook for Systematic Reviews of Interventions* ([Higgins 2011](#)). Any disagreements were resolved by consensus and decisions were independently checked by a third review author (RT). We assessed the risk of bias according to the following domains.

- Random sequence generation.
- Allocation concealment.

- Blinding of outcome assessment.
- Incomplete outcome data.
- Selective outcome reporting.
- Other (specifically sources of funding and conflicts of interest).

We also assessed two additional domains: whether the study groups were balanced at baseline, and if the study groups received comparable care (apart from the exercise component of the intervention). These criteria, agreed upon in advance by the review authors, have not been validated but have been used to assess quality in previous Cochrane reviews ([Anderson 2016](#); [Anderson 2016a](#); [Brown 2011](#); [Sibilitz 2016](#); [Taylor 2014](#); [Taylor 2015](#)). We assessed these two domains as follows.

#### Groups balanced at baseline

- Low risk of bias: the characteristics of the participants in the intervention and control groups at baseline are reported to be comparable or can be judged to be comparable (e.g. baseline data reported in a table in the study report) in terms of likely main prognostic factors.
- Unclear risk of bias: whether the characteristics of the participants in the intervention and control groups are balanced at baseline is not reported, and reported information is inadequate to assess this (e.g. no table of baseline data in the study report).
- High risk of bias: there is evidence of substantive imbalance in the baseline characteristics of the intervention and control groups with regard to likely major prognostic factors.

#### Groups received comparable treatment (except exercise)

- Low risk of bias: all co-interventions were delivered equally across intervention and control groups.
- Unclear risk of bias: information to assess whether co-interventions were delivered equally across groups was insufficient.
- High risk of bias: the co-interventions were not delivered equally across intervention and control groups.

We graded each potential source of bias as high, low, or unclear and provided a quote from the study report together with a justification for our judgement in the 'Risk of bias' table. We summarised the 'Risk of bias' judgements across different studies for each of the domains listed. Where information on risk of bias relates to unpublished data or correspondence with an author, we noted this in the 'Risk of bias' table.

When considering treatment effects, we took into account the risk of bias for the studies that contributed to that outcome.

### Assessment of bias in conducting the systematic review

We conducted the review according to the published protocol and reported any deviations from it, if occurring, in the [Differences between protocol and review](#) section of the systematic review.

### Measures of treatment effect

We processed data in accordance with the *Cochrane Handbook for Systematic Reviews of Interventions* (Higgins 2011). We analysed dichotomous data as a risk ratio (RR) with 95% confidence intervals (CIs) and continuous data as mean difference (MD) or standardised mean difference (SMD) with 95% CIs. For outcomes that were measured by studies in a variety of ways (for example exercise capacity), the SMD with 95% CIs was used as the summary statistic. We entered data presented as a scale with a consistent direction of effect.

### Unit of analysis issues

In accordance with Section 16.4 of the *Cochrane Handbook for Systematic Reviews of Intervention* (Higgins 2011), we included data from both periods of any cross-over trials identified, assuming 1) there had been a wash-out period considered long enough to reduce carry-over, 2) no irreversible events such as mortality had occurred, and 3) appropriate statistical approaches had been used. If cluster trials had been included, consideration would have been given to whether the reported data analysis had appropriately taken account of the aggregate nature of the data.

### Dealing with missing data

We contacted investigators or study sponsors to verify key study characteristics and obtain missing numerical outcome data where possible (for example when a study was identified as abstract only). Where this was not possible, and the missing data were not thought to introduce serious bias, we explored the impact of including such studies on the overall assessment of results by a sensitivity analysis.

### Assessment of heterogeneity

We explored heterogeneity amongst included studies qualitatively (by comparing the characteristics of included studies) and quantitatively (using the  $\text{Chi}^2$  test of heterogeneity and  $I^2$  statistic). We considered that an  $I^2$  between 50% and 90% may represent substantial heterogeneity (Higgins 2011).

### Assessment of reporting biases

If we had been able to pool more than 10 trials, we had intended to create and examine a funnel plot and use the Egger test (Egger 1997) to explore possible small-study biases for the primary outcomes. However, this was not possible owing to the small number ( $n = 7$ ) of included trials.

### Data synthesis

We undertook a meta-analysis only where this was meaningful, i.e. if the treatments, participants and the underlying clinical question were similar enough for pooling to make sense. Data from each study were pooled using a fixed-effect model, except where substantial heterogeneity existed. If possible, we intended to pool the results for HRQL using a standardised mean difference. If there was evidence of substantial statistical heterogeneity ( $P$  value less than 0.10,  $I^2$  above 50%) associated with an effect estimate, we applied a random-effects model, which provided a more conservative statistical comparison of the difference between intervention and control because a confidence interval around the effect estimate is wider than a confidence interval around a fixed-effect estimate. If a statistically significant difference was still present using the random-effects model, we also reported the fixed-effect pooled estimate and 95% confidence interval because of the tendency of smaller trials, which are more susceptible to publication bias, to be over-weighted with a random-effects analysis (Heran 2008a; Heran 2008b).

We processed data in accordance with the *Cochrane Handbook for Systematic Reviews of Interventions* (Higgins 2011). We completed data synthesis and analyses using Review Manager 5.3 software (RevMan 2014), and we planned to conduct a meta-regression analysis using the 'metareg' command in Stata version 14.2 (StataCorp 2013).

### 'Summary of findings' table

Two reviewers (LL and RST) independently employed the Grading of Recommendations Assessment, Development and Evaluation (GRADE) approach (Schünemann 2011) to interpret result findings. We used the five GRADE considerations (study limitations, consistency of effect, imprecision, indirectness, and publication bias) to assess the quality of a body of evidence as it related to the studies that contributed data to the meta-analyses and narrative summaries for the pre-specified outcomes. Any discrepancies in judgements were resolved through discussion. One reviewer (LL) used GRADEpro GDT 2015 to import data from Review Manager to create a 'Summary of findings' table using the following pre-specified outcomes: all-cause mortality; myocardial infarction (MI); all-cause hospital admissions; HRQL; return to work, exercise capacity and adverse events. We justified all decisions to downgrade the quality of evidence using footnotes, and made comments to aid readers' understanding of the review where necessary.

### Subgroup analysis and investigation of heterogeneity

We anticipated length of follow-up to be a driver of intervention effect, and therefore sought to stratify meta-analysis of each outcome according to the length of trial duration, i.e. 'short-term' follow-up (6 to 12 months); 'medium-term' follow-up (13 to 36 months); and 'long-term' follow-up (more than 36 months). We



also aimed to undertake univariate meta-regression to explore heterogeneity and examine potential treatment effect modifiers. We sought to test the a priori hypotheses that there may be differences in the effect of exercise-based CR on all-cause mortality, morbidity, health related quality of life and exercise capacity across particular subgroups (Anderson 2016):

- type of CR: exercise-only CR versus comprehensive CR (categorical variable);
- 'dose' of exercise intervention (dose = number of weeks of exercise training x average number of sessions per week x average duration of session in minutes): dose 1000 units or more, versus dose less than 1000 units (continuous variable);
- follow-up period (continuous variable);
- year of publication: pre-1995 and post-1995 (continuous variable)-timing reflects the introduction of modern-day drug therapy for the management of CHD;
- sample size (continuous variable);
- setting: home- or centre-based CR (categorical variable);
- study location: continent (categorical variable);
- mean age of participants (continuous variable);
- percentage of male participants (continuous variable); and
- percentage of post-MI participants (continuous variable).

We sought to extract results of subgroup analyses, including participant-level subgroup analyses, if reported by individual included studies, for example if a trial reports whether there was a difference in the effectiveness of CR between males and females. Given the anticipated small ratio of trials to covariates, we had anticipated a meta-regression limited to univariate analysis (Higgins 2011). However, given the small number of trials (N = 7) included in this review, neither meta-regression or a stratified meta-analysis were deemed appropriate (Higgins 2011).

### Sensitivity analysis

We had planned to compare meta-analysis results including all studies versus only including those studies judged to have overall

low risk of bias (low risk in four or more domains). We had also intended to conduct a sensitivity analysis excluding studies at high risk of bias and to produce funnel plots and tests of asymmetry to assess possible publication bias (Egger 1997). However, due to the small number of trials included in this review (N = 7) neither the sensitivity analysis or funnel plots were undertaken.

### Reaching conclusions

We based our conclusions only on findings from the quantitative or narrative synthesis of included studies for this review. We avoided making recommendations for practice and our implications for research suggested priorities for future research and outlined what the remaining uncertainties were in the area.

## RESULTS

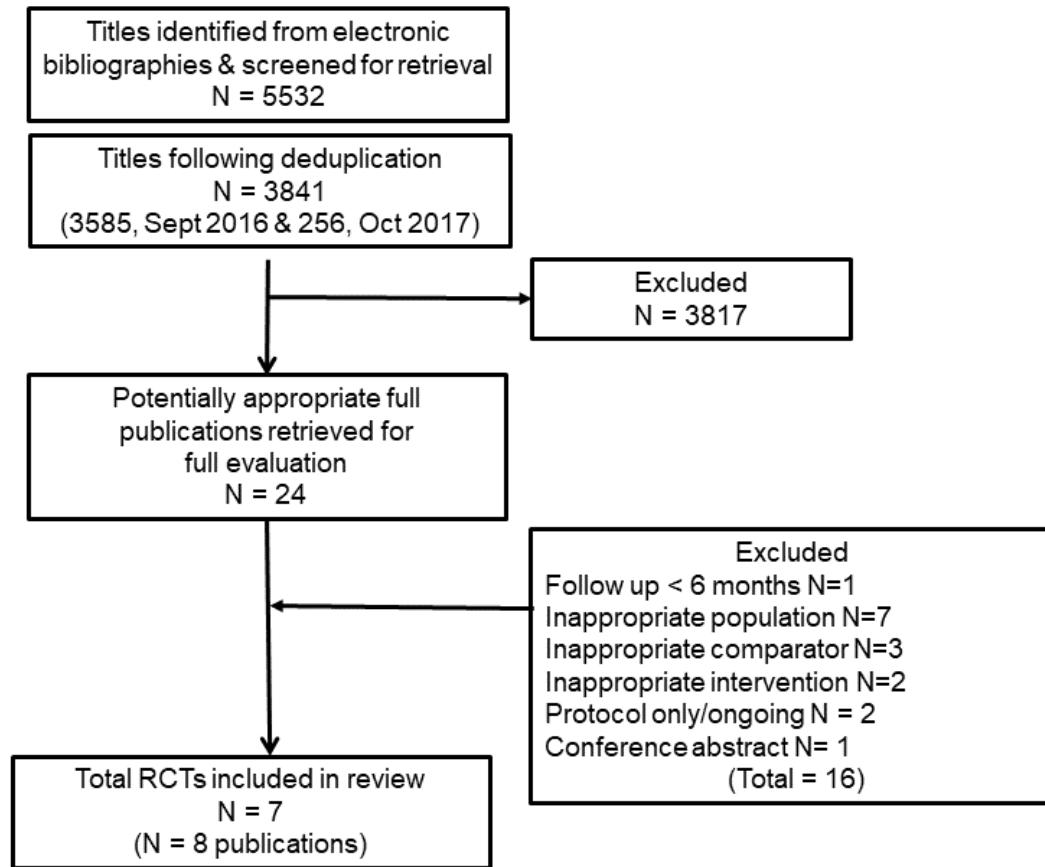
### Description of studies

See [Characteristics of included studies](#) and [Characteristics of excluded studies](#).

### Results of the search

The electronic search yielded 3,841 titles and abstracts (3,585 for September 2016; 256 for October 2017 update). Following screening, 24 studies were evaluated for formal inclusion or exclusion by retrieving the full-text publications. A total of seven randomised controlled trials (RCTs) were included for review. Backwards and forwards searching of the reference lists of the eligible publications did not detect any further publications for inclusion. One ongoing trial protocol was identified (NCT01147952). The study selection process is summarised in the flow diagram (Figure 1).

Figure 1. PRISMA flow diagram of trial selection



### Included studies

Overall, we included seven trials (eight publications) (Devi 2014; Hambrecht 2004; Jiang 2007; Manchanda 2000; Raffo 1980; Schuler 1992; Todd 1991) with 581 participants. One trial (Schuler 1992) reported results from two publications in the same trial population. The original study (Schuler 1992) was included and analysed in this review. Although included, one trial provided no outcome data relevant to this review (Jiang 2007). Detailed study characteristics and risks of bias assessment for the seven included studies are provided in the [Characteristics of included studies](#) table.

Four studies (Devi 2014; Hambrecht 2004; Raffo 1980; Todd 1991) were exercise-only intervention studies and three studies (Jiang 2007; Manchanda 2000; Schuler 1992) were comprehensive cardiac rehabilitation (CR), i.e. exercise plus education inter-

ventions. Five studies were performed in European countries, one in China (Jiang 2007) and one in India (Manchanda 2000). All studies were relatively small in size ranging from 24 to 113 participants with a median of 86 participants. The median intervention duration was 12 months (range: 6 weeks to 12 months). Mean age of participants within the trials ranged from 50 to 66 years. All studies recruited a majority of males (range: 74% to 100%), with four recruiting men only.

One study was based solely on a hospital-based CR programme (Todd 1991). Three studies initiated CR in the hospital followed by home-based delivery (Hambrecht 2004; Manchanda 2000; Raffo 1980). Two studies were entirely home-based (Devi 2014; Jiang 2007) and used an on-line exercise goal setting intervention. In all the included studies the primary mode of exercise was aerobic exercise - typically walking and cycling. The dose of exercise varied considerably across studies, in terms of overall duration (range:

6 weeks to 12 months), frequency (daily), session length (range: 11 to 90 minutes per session) and intensity (defined as 'moderate intensity' or 70% to 75% maximal heart rate). Intervention adherence and fidelity were either poorly reported or not reported at all so we were not able to assess the actual amounts of exercise or other CR that the CR participants undertook. Six studies compared CR to usual care which included medication, education and advice about diet and risk factors. One trial ([Hambrecht 2004](#)) compared exercise training to percutaneous coronary intervention (PCI).

### Excluded studies

Seventeen studies identified in the search were excluded for reasons listed in the [Characteristics of excluded studies](#) table. The most common reasons for exclusion were a failure to include the appropriate population of people with stable angina.

### Risk of bias in included studies

[Figure 2](#) and [Figure 3](#) provide summaries of the risk of bias judgements presented as percentiles across all studies, and for each included study, respectively. We were unable to fully assess the potential for risk of bias in many instances due to there being insufficient details reported in the studies. The reporting of details tended to be poorer in studies published prior to 2000.

**Figure 2. Risk of bias graph: review authors' judgements about each risk of bias item presented as percentages across all included studies.**

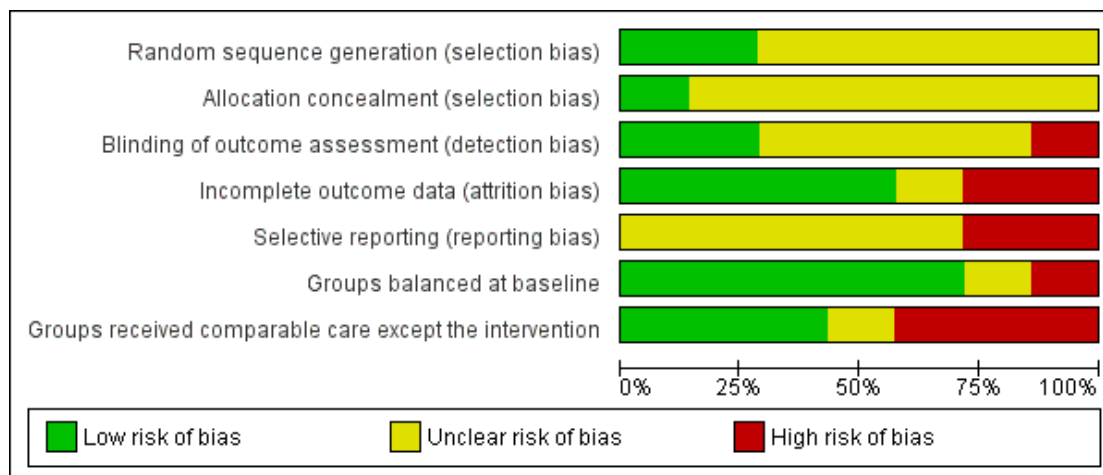




Figure 3. Risk of bias summary: review authors' judgements about each risk of bias item for each included study.

	Random sequence generation (selection bias)	Allocation concealment (selection bias)	Blinding of outcome assessment (detection bias)	Incomplete outcome data (attrition bias)	Selective reporting (reporting bias)	Groups balanced at baseline	Groups received comparable care except the intervention
Devi 2014	+	+	-	+	-	+	-
Hambrecht 2004	?	?	+	+	?	+	+
Jiang 2007	+	?	?	+	?	+	?
Manchanda 2000	?	?	?	?	-	-	-
Raffo 1980	?	?	+	-	?	?	+
Schuler 1992	?	?	?	-	?	+	-
Todd 1991	?	?	?	+	?	+	+

## Allocation

In five studies there was an unclear risk of bias in the method used to generate randomisation sequence (Hambrecht 2004; Manchanda 2000; Raffo 1980; Schuler 1992; Todd 1991), with all five studies reporting that the study was 'randomised' but not providing adequate details for us to assess whether their method was appropriate. In the same five studies there was also an unclear risk of bias in the methods used to conceal participant allocation, as the studies did not describe the measures taken to ensure concealment of group allocation.

## Blinding

One study stated participants were not blinded (Devi 2014) and we judged this study to be at high risk of bias as the outcome assessments are likely to be influenced by the lack of blinding. Blinding of participants were not reported in the remaining five studies (Hambrecht 2004; Manchanda 2000; Raffo 1980; Schuler 1992; Todd 1991). One study blinded outcome assessors to group allocation (Hambrecht 2004) while another used procedures to ensure that assessment of exercise capacity was blinded (Raffo 1980); both studies were judged to be at low risk of bias. The outcome assessor was not blinded in one study and therefore we judged it to be at high risk of bias (Devi 2014). Blinding of outcome assessors was not reported in five studies (Jiang 2007; Manchanda 2000; Raffo 1980; Schuler 1992; Todd 1991), four of which were judged to be of unclear risk of bias (Jiang 2007; Manchanda 2000; Schuler 1992; Todd 1991).

## Incomplete outcome data

Where reported, losses to follow-up and dropout were relatively high, ranging from 15% to 58% across studies. We judged four studies (Devi 2014; Hambrecht 2004; Jiang 2007; Todd 1991) to be of low risk of bias as they described the number of and reasons for dropouts, which were balanced across groups. We judged two studies to be at high risk of bias (Raffo 1980; Schuler 1992). Raffo 1980 had a high rate of dropout (58%). In Schuler 1992, dropouts were high in the intervention group (29%) due to patients experiencing adverse clinical events during exercise. One study (Manchanda 2000) was judged have unclear risk of bias as reporting was insufficient.

## Selective reporting

We judged the risk of selective reporting to be unclear in five studies where the study protocol was not available (Hambrecht 2004; Jiang 2007; Raffo 1980; Schuler 1992; Todd 1991). Risk of bias was considered high in one further study where the protocol was

not available; in the methods section of the study paper, participants are described as being assessed monthly but only results at 12 months are reported (Manchanda 2000). We judged one study to be at high risk of bias because the primary outcome and two secondary outcomes described in the trial protocol were not reported (Devi 2014).

## Other potential sources of bias

### Groups balanced at baseline

We considered the risk of bias associated with groups being unbalanced at baseline as low for five studies (Devi 2014; Hambrecht 2004; Jiang 2007; Schuler 1992; Todd 1991). The risk associated with groups being unbalanced at baseline was unclear in one study (Raffo 1980). We judged one study (Manchanda 2000) to be at high risk of bias as there was evidence of substantial imbalance in the baseline characteristics of the intervention and control groups with regard to a likely prognostic factor (angina episodes per week).

### Groups received comparable care (except the intervention)

We judged three studies (Hambrecht 2004; Todd 1991; Raffo 1980) to be at low risk of bias for this domain, because both groups received comparable care except for the CR intervention. Three studies were judged to be at high risk of bias because groups did not receive comparable care (Devi 2014; Manchanda 2000; Schuler 1992) and one study to be unclear risk of bias (Jiang 2007).

## Effects of interventions

See: [Summary of findings for the main comparison](#) Exercise-based cardiac rehabilitation compared to usual care for adults with stable angina

### Exercise-based cardiac rehabilitation compared to usual care for adults with stable angina

See [Summary of findings for the main comparison](#). None of the included studies reported on the following outcome measures: all-cause hospital admissions or return to work.

## Primary Outcomes

### Mortality

Three studies (Manchanda 2000; Schuler 1992; Todd 1991) (total of 195 participants) reported a total of four all-cause deaths with

a pooled risk ratio (RR) of 1.01 (95% confidence interval (CI) 0.18 to 5.67,  $I^2 = 0\%$ , fixed-effect) (Analysis 1.1). We assessed the evidence to be of very low-quality using GRADE, because of concerns about risk of bias (random sequence generation, allocation concealment, blinding of outcome assessment and selective reporting), concerns about applicability to review question (participants in all studies were limited to middle-aged men) and concerns about imprecision (small number of participants and confidence intervals including potential for important harm or benefit); see [Summary of findings for the main comparison](#). One study (Schuler 1992) reported cardiovascular-related mortality in two participants in the CR group and none in the control.

## Morbidity

### Myocardial infarction (MI)

Three studies (Hambrecht 2004; Schuler 1992; Todd 1991) (total of 254 participants) reported on the incidence of MI with a total of six events (Analysis 1.2). There was a pooled RR of 0.33 in favour of CR (95% CI 0.07 to 1.63,  $I^2 = 0\%$ , fixed-effect). We assessed the evidence to be of very low-quality using GRADE, because of concerns about risk of bias (sequence generation, allocation concealment, blinding of outcome assessment, selective reporting, high loss to follow-up and unbalanced groups at baseline), concerns about applicability to review question (participants in all studies were limited to middle-aged men), and concerns about imprecision (small number of participants and confidence intervals including potential for important harm or benefit) ([Summary of findings for the main comparison](#)).

### Revascularisations (coronary artery bypass graft (CABG) or percutaneous coronary intervention (PCI))

Three studies (Hambrecht 2004; Manchanda 2000; Schuler 1992) (total of 256 participants) reported on the incidence of revascularisations with a total of 28 events (Analysis 1.3). In total, six revascularisations were reported among the CR groups in the three studies, and 22 in the control groups, with a pooled RR for risk of revascularisations of 0.27 in favour of CR (95% CI 0.11 to 0.64,  $I^2 = 0\%$ , fixed-effect). We assessed the evidence to be of very low-quality using GRADE, because of concerns about risk of bias (random sequence generation, allocation concealment, selective reporting and high losses to follow-up), concerns about applicability to review question (participants in all studies were limited to middle-aged men) and concerns about imprecision (small number of participants).

### All-cause hospital admissions

No studies reported this outcome.

### Health-related quality of life (HRQL)

One study (Devi 2014, 94 participants) reported HRQL using validated instruments (Seattle angina questionnaire and MacNew questionnaire). Compared to control, improvements with CR at the six-week follow-up were seen in emotional score ( $P = 0.04$ ) and angina frequency ( $P = 0.002$ ). Benefits in favour of CR in angina frequency ( $P = 0.02$ ) and social HRQL score ( $P = 0.02$ ) were also observed at the six-month follow-up. We assessed the evidence for this outcome as very low-quality using GRADE because of concerns about risk of bias (blinding of outcome assessment, high losses to follow-up, selective reporting and unbalanced groups at baseline) and concerns about imprecision (small number of participants). Given the variation of outcomes it is not possible to consistently comment on the clinical importance of these results ([Summary of findings for the main comparison](#)).

### Exercise capacity

Five studies (Hambrecht 2004; Manchanda 2000; Raffo 1980; Schuler 1992; Todd 1991) (total of 267 participants) reported exercise capacity with a range of validated measures (VO<sub>2</sub> peak and exercise duration) (Analysis 1.4). There was a small improvement in exercise capacity with CR compared to control (standardised mean difference (SMD) 0.45, 95% CI 0.20 to 0.70;  $I^2 = 16\%$ , fixed-effect). We assessed the evidence to be of low quality using GRADE because of concerns about risk of bias (random sequence generation, allocation concealment, blinding of outcome assessment and selective reporting, high losses to follow-up and unbalanced groups at baseline) and concerns with imprecision due to small number of participants ([Summary of findings for the main comparison](#)).

### Cardiovascular-related hospital admissions

One study (Hambrecht 2004) (101 participants) reported that one CR participant and seven control participants experienced cardiovascular-related hospital admissions (RR 0.14, 95% CI: 0.02 to 1.10 (Analysis 1.5)), with very low-quality evidence as assessed using GRADE because of concerns about risk of bias (random sequence generation, allocation concealment, high losses to follow-up and selective reporting), concerns about applicability to review question (participants in all studies were limited to middle-aged men) and concerns about imprecision (small number of participants). See [Summary of findings for the main comparison](#).

## Secondary Outcomes

### Severity of angina

Manchanda 2000 (42 participants) reported a reduction in mean New York Heart Association (NYHA) score from baseline to one

year follow-up (2.6 to 1.4,  $P < 0.0001$ ) with CR and an increase in mean NYHA in control (2.3 to 2.9,  $P = 0.004$ ). [Hambrecht 2004](#) (101 participants) reported an improvement in angina severity assessed by mean Canadian Cardiovascular Society (CCS) score in both CR (1.5 to 0.4,  $P < 0.001$ ) and control (1.7 to 0.7,  $P < 0.001$ ). We assessed the evidence as very low-quality using GRADE because of concerns about risk of bias (random sequence generation, allocation concealment, blinding of outcome assessment, selective reporting, high losses to follow-up, and unbalanced groups at baseline), concerns about applicability to review question (participants in all studies were limited to middle-aged men) and concerns about imprecision (small number of participants). Data could not be pooled in a meta-analysis because of scales used to report outcome measures (i.e. NYHA is categorical whilst CCS is continuous).

### Reported adverse events

Adverse events were only commented upon by one study ([Hambrecht 2004](#), 101 participants). The authors reported “no adverse events” during the exercise training programme in the CR group. We assessed the evidence as very low quality using GRADE because of concerns about risk of bias (random sequence generation, allocation concealment and selective reporting), concerns about applicability to the review question (participants in the study were limited to middle-aged men) and concerns about imprecision (small number of participants).

### Costs

One study ([Hambrecht 2004](#)) (101 participants) reported a difference in mean participant healthcare costs in favour of CR (CR: USD 3708 versus control: USD 6086,  $P < 0.0001$ ). These costs included hospitalisations, repeat vascularisations, any other cardiovascular events plus the costs of the provision of the CR exercise training programme. We assessed this evidence as very low-quality using GRADE because of concerns about risk of bias (random sequence generation, allocation concealment, high losses to follow-up and selective reporting), concerns about applicability to review question (participants in all studies were limited to middle-aged men) and concerns about imprecision (small number of participants).

### Return to work

No studies reported this outcome.

## DISCUSSION

### Summary of main results

This systematic review identified seven randomised trials involving a total of 581 participants with a confirmed diagnosis of stable angina. Five trials compared exercise-based cardiac rehabilitation (CR) with a no exercise control, with one trial including percutaneous coronary intervention (PCI) as a comparator ([Hambrecht 2004](#)). Four studies used exercise-only interventions ([Devi 2014](#); [Hambrecht 2004](#); [Raffo 1980](#); [Schuler 1992](#)) and three studies used comprehensive CR programmes including dietary and risk-factor advice alongside exercise training. All exercise programmes were based on aerobic exercise, typically walking and cycling.

Trials had an intervention length of 6 weeks to 12 months and follow-up length of 6 to 12 months. The comparison group in all trials was usual care (without any form of structured exercise training or advice) or a no-exercise comparator. The mean age of participants within the trials ranged from 50 to 66.2 years, the majority of participants being male (range: 74% to 100%).

Due to concerns about the small number of trials and their small size, potential risk of bias and lack of applicability, we assessed the body of evidence for all but one outcome where data were reported to be of very low quality (all-cause mortality, myocardial infarction, revascularisations, cardiovascular-related hospital admissions, health-related quality of life, adverse events and costs). We are therefore uncertain about the impact of exercise-based CR on these outcomes compared to usual care in people with stable angina. Based on low-quality evidence, there may be a small improvement in exercise capacity following exercise-based CR compared to usual care. No studies reported the outcomes of return to work or all-cause hospital admissions. High-quality, well-reported randomised trials are needed to assess the benefits and harms of exercise-based CR for adults with stable angina. Such trials need to collect patient-relevant outcomes, including clinical events and health-related quality of life. They should also assess cost-effectiveness, and recruit participants that are reflective of the real-world population of people with angina.

### Overall completeness and applicability of evidence

The generalisability of this review is limited by the small number of randomised clinical trials, the low number of people with angina and few observed events. Furthermore, included trials generally recruited primarily middle-aged men who were willing to participate in an exercise-based training programme and therefore the evidence lacks applicability to older and female populations. Adequately powered, high-quality, multi-centre randomised trials in a broader, more representative population of people with stable angina are needed. Only one study reported cardiovascular-related hospital admissions, adverse events and costs, whilst a different single study looked at health-related quality of life. None of the included trials measured all-cause hospital admissions or return to work. Future trials should collect patient-relevant outcomes and also assess cost-effectiveness.

## Quality of the evidence

Using GRADE methodology we assessed the quality of the evidence for all outcomes where data were reported to be of very low-quality, with the exception of exercise capacity, which we assessed as being low quality (see [Summary of findings for the main comparison](#)).

In terms of risk of bias, the majority of studies reported unclear randomisation processes and unclear concealment of randomisation. A lack of blinding resulted in a high risk of detection bias in one trial, and high numbers of participants lost to follow-up resulted in a risk of attrition bias in two trials. Two trials were at high risk of outcome reporting bias. One trial was at high risk of imbalance between groups at baseline and three were at high risk of bias due to not receiving comparable care in addition to the intervention. The reporting of details was poorer in the older studies (from the year 2000 and earlier); this meant we had to assign assessments of unclear risk of bias in many domains.

Six outcomes (mortality, myocardial infarction, revascularisations, cardiovascular-related hospital admissions, severity of angina and costs) were assessed in trials consisting of middle-aged men (over 50 years old), which raises concerns about indirectness and whether the review findings are applicable to women and older populations.

We also had concerns about imprecision, either due to the low number of participants, or due to wide confidence intervals which included potential for important harm or benefit (or both) for eight outcomes (mortality, myocardial infarction, revascularisations, health-related quality of life, exercise capacity, cardiovascular hospital admissions, severity of angina and costs).

## Potential biases in the review process

We conducted the review according to the methods provided in the *Cochrane Handbook for Systematic Review of Interventions* (Higgins 2011). We followed our peer-reviewed and pre-published protocol in order to avoid biases during the conduct and write-up of the review. In addition, we performed a comprehensive literature search to identify published and unpublished trials. We contacted study authors for further information.

During the screening process, we found studies that included a mixed population of people with coronary heart disease, but did not provide a separate reporting and analysis of the participants with stable angina. We were therefore unable to include these studies. In many studies, we found clinical event data (e.g. mortality data) in the trial descriptions of losses to follow-up, rather than being formally stated as outcomes.

If in updated versions of this review we include data from studies where the majority of a mixed population had stable angina, we will exclude these studies in a sensitivity analysis to explore their impact on the main analyses.

An additional issue is that morbidity is considered as more than

one primary outcome in our analyses (MI, CABG/PCI, all-cause hospital admissions). Likewise, two different dimensions of quality of life are reported. Therefore there are a total of eight measures of our primary outcomes. There is a strong risk of introducing multiplicity arising from the multiple measures of effects.

## Agreements and disagreements with other studies or reviews

Our scoping searches confirmed that no systematic review has been conducted specifically assessing the impact of exercise-based CR in a population of people with stable angina. A recent Cochrane Review and meta-analysis of 63 trials, which randomised 14,486 participants with coronary heart disease (including angina) to exercise-based CR or a no-exercise control, showed that exercise-based CR led to a reduction in cardiovascular mortality (risk ratio (RR) 0.74, 95% CI 0.64 to 0.86), hospital admissions (RR 0.82, 95% CI 0.70 to 0.96) and improved health-related quality of life (Anderson 2016). The five trials of people with stable angina included in this present Cochrane Review were included in this previous review.

## AUTHORS' CONCLUSIONS

### Implications for practice

The impact of exercise-based cardiac rehabilitation (CR) for adults with stable angina is uncertain due to the quality of the evidence being low to very low. However, it may be associated with a small increase in exercise capacity compared to no exercise control. These findings are largely in contrast with current American College of Cardiology/American Heart Association and European Society of Cardiology guidelines, which recommend CR for people with coronary heart disease including stable angina (Fihn 2012; Montalescot 2013; Smith 2011).

### Implications for research

Given the substantial body of randomised trial evidence available in myocardial infarction patients, and those with post-coronary artery bypass graft or percutaneous coronary intervention, it is perhaps surprising that there is not currently a stronger evidence base for exercise-based CR for stable angina. There is a need for well-conducted randomised controlled trials of exercise-based CR compared to no intervention. Such trials should seek to recruit representative samples of patients with stable angina. They should also collect outcomes that include validated health-related quality of life measures, report clinical events including mortality and hospital admission, and assess costs and cost-effectiveness.

Future trials should publish their study protocols according to the Recommendations for Interventional Trials (SPIRIT) guidelines

and report their methods and results according to the Consolidated Standards of Reporting Trials (CONSORT) extension statement for non-pharmacological trials (Chan 2013; [www.consort-statement.org](http://www.consort-statement.org)).

## ACKNOWLEDGEMENTS

The review authors thank the Cochrane Heart editorial team for their support. The review authors would also like to express their sincere thanks for the professional and timely handling of the review process by Helen Wakeford and Cochrane Fast-Track team.

## REFERENCES

### References to studies included in this review

**Devi 2014** *{published data only}*

Devi R, Powell J, Singh S. A web-based program improves physical activity outcomes in a primary care angina population: Randomized controlled trial. *Journal of Medical Internet Research* 2014;**16**(9):e186, 1-12.

**Hambrecht 2004** *{published data only}*

Hambrecht R, Walther C, Möbius-Winkler S, Gielen S, Linke A, Conradi K, et al. Percutaneous coronary angioplasty compared with exercise training in patients with stable coronary artery disease: a randomized trial. *Circulation* 2004;**109**(11):1371–8.

**Jiang 2007** *{published data only}*

Jiang X, Sit JW, Wong TKS. A nurse-led cardiac rehabilitation programme improves health behaviours and cardiac physiological risk parameters: evidence from Chengdu, China. *Journal of Clinical Nursing* 2007;**16**: 1886–97.

**Manchanda 2000** *{published data only}*

Manchanda SC, Narang R, Reddy KS, Sachdeva U, Prabhakaran D, Dharmanand S, et al. Retardation of coronary atherosclerosis with yoga lifestyle intervention. *The Journal of the Association of Physicians of India* 2000;**48** (7):687–94.

**Raffo 1980** *{published data only}*

Raffo JA, Luksic IY, Kappagoda CT, Mary DA, Whitaker W, Linden RJ. Effects of physical training on myocardial ischaemia in patients with coronary artery disease Effects of physical training on myocardial ischaemia in patients with coronary artery disease. *British Heart Journal* 1980;**43**(3): 262–9.

**Schuler 1992** *{published data only}*

Niebauer J, Hambrecht R, Marburger C, Hauer K, Velich T, von Hodenberg E, et al. Physical exercise and low-fat diet on collateral vessel formation in stable angina pectoris and

angiographically confirmed coronary artery disease. *The American Journal of Cardiology* 1995;**76**(11):771–5.

Schuler G, Hambrecht R, Schlierf G, Niebauer J, Hauer K, Neumann J, et al. Regular physical exercise and low-fat diet effects on progression of coronary artery disease. *Circulation* 1992;**86**(1):1–11.

**Todd 1991** *{published data only}*

Todd IC, Bradnam MS, Cooke MB, Ballantyne D. Effects of daily high-intensity exercise on myocardial perfusion in Angina Pectoris. *The American Journal of Cardiology* 1991; **68**(17):1593–9.

### References to studies excluded from this review

**Back 2008** *{published data only}*

Back M, Wennerblom B, Wittboldt S, Cider A. Effects of high frequency exercise in patients before and after elective percutaneous coronary intervention. *European Journal of Cardiovascular Nursing* 2008;**7**(4):307–13.

**Byrkjeland 2015** *{published data only}*

Byrkjeland R, Njerve IU, Anderssen SH, Arnesen H, Seljeflot I, Solheim S. Effects of exercise training on HbA1c and VO<sub>2</sub> peak in patients with type 2 diabetes and coronary artery disease: A randomised clinical trial. *Diabetes and Vascular Disease Research* 2015;**12**(5):325–33.

**Jiang 2013** *{published data only}*

Jiang YR, Maddison L, Pfaeffli R, Whittaker R, Stewart A, Kerr G, et al. HEART exercise and remote technologies (HEART): A randomized controlled trial. *Clinical Trials* 2013;**10**(2):S47–S48.

**Johnson 2009** *{published data only}*

Johnson NA, Lim LLY, Bowe SJ. Multicenter randomized controlled trial of a home walking intervention after outpatient cardiac rehabilitation on health-related quality of life in women. *European Journal of Cardiovascular Prevention and Rehabilitation* 2009;**16**(5):633–7.



- Kay 2000** *{published data only}*  
 Kay P, Kittelson J, Stewart RA. Relation between duration and intensity of first exercise and “warm up” in ischaemic heart disease. *Heart* 2000;**83**(1):17–21.
- Linxue 1999** *{published data only}*  
 Linxue LR, Nohara S, Makita R, Hosokawa T, Hata K, Okuda H, et al. Effect of long-term exercise training on regional myocardial perfusion changes in patients with coronary artery disease. *Japanese Circulation Journal* 1999;**63**(2):73–8.
- Malmborg 1974** *{published data only}*  
 Malmborg RO, Isacsson SO, Kallivroussis G. The effect of beta blockade and/or physical training in patients with angina pectoris. *Current Therapeutic Research, Clinical & Experimental* 1974;**16**(3):171–83.
- Menna 1977** *{published data only}*  
 Menna J, Ferreiros E, Saglietti J. Rehabilitation of different forms of coronary heart disease. A prospective randomized trial and follow up of three groups of patients. *Cardiology* 1977;**62**(2):70.
- Michalsen 2006** *{published data only}*  
 Michalsen A, Knoblauch TN, Lehmann N, Grossman P, Kerkhoff G, Wilhelm FH, et al. Effects of lifestyle modification on the progression of coronary atherosclerosis, autonomic function, and angina—the role of GNB3 C825T polymorphism. *American Heart Journal* 2006;**151**(4):870–7.
- Myers 1987** *{published data only}*  
 Myers J, Ahnve S, Froelicher V, Sullivan M, Friis R. Influence of exercise training on spatial R-wave amplitude in patients with coronary artery disease. *Journal of Applied Physiology* 1987;**62**(3):1231–5.
- Onishi 2010** *{published data only}*  
 Onishi T, Shimada K, Sato H, Seki E, Watanabe Y, Sunayama S, et al. Effects of phase III cardiac rehabilitation on mortality and cardiovascular events in elderly patients with stable coronary artery disease. *Circulation Journal* 2010;**74**(4):709–14.
- Sullivan 1985** *{published data only}*  
 Sullivan M, Ahnve S, Froelicher VF, Meyers J. The influence of exercise training on the ventilatory threshold of patients with coronary heart disease. *American Heart Journal* 1985;**109**(3):458–63.
- Wang 2014** *{published data only}*  
 Wang W, Chan S, He HG. Developing and testing a mobile application programme to support self-management in patients with stable angina: a feasibility study. *Studies in Health Technology & Informatics* 2014;**201**:241–8.
- Weberg 2013** *{published data only}*  
 Weberg M, Hjermstad MJ, Hilmarsen CW, Oldervoll L. Inpatient cardiac rehabilitation and changes in self-reported health related quality of life - a pilot study. *Annals of Physical and Rehabilitation Medicine* 2013;**56**(5):342–55.

## References to ongoing studies

- NCT00350922** *{published data only}*  
 NCT00350922. A clinical trial of a self-management education program for people with chronic stable angina. <https://clinicaltrials.gov/show/nct00350922> 2005 (date accessed: 01 Sept 2017).
- NCT01147952** *{published data only}*  
 Bourke L, Tew GA, Milo M, Crossman DC, Saxton JM, Chico TJ. Study protocol: a randomised controlled trial investigating the effect of exercise training on peripheral blood gene expression in patients with stable angina. *BMC Public Health* 2010;**10**:620.

## Additional references

- Anderson 2016**  
 Anderson L, Thompson DR, Oldridge N, Zwisler AD, Rees K, Martin N, et al. Exercise-based cardiac rehabilitation for coronary heart disease. *Cochrane Database of Systematic Reviews* 2016, Issue 1. [DOI: 10.1002/14651858.CD001800.pub3]
- Anderson 2016a**  
 Anderson L, Dall CH, Nguyen TT, Burgess L, Taylor RS. Exercise-based cardiac rehabilitation in heart transplant recipients. *Cochrane Database of Systematic Reviews* 2016, Issue 6. [DOI: 10.1002/14651858.CD012264]
- BACPR 2012**  
 British Association for Cardiovascular Prevention and Rehabilitation. The BACPR standards and core components for cardiovascular disease prevention and rehabilitation, 2nd edition. [www.bacpr.com/resources/46C\\_BACPR\\_Standards\\_and\\_Core\\_Components\\_2012.pdf](http://www.bacpr.com/resources/46C_BACPR_Standards_and_Core_Components_2012.pdf) (accessed 20 April 2016).
- Beswick 2004**  
 Beswick AD, Rees K, Griebisch I, Taylor FC, Burke M, West RR, et al. Provision, uptake and cost of cardiac rehabilitation programmes: improving services to under-represented groups. *Health Technology Assessment* 2004;**8**(iii-iv,ix-x):1–152.
- BHF 2014**  
 British Heart Foundation. Cardiovascular Disease Statistics 2014. British Heart Foundation Centre on Population Approaches for Non-Communicable Disease Prevention, Nuffield Department of Population Health, University of Oxford 2014.
- Brown 2011**  
 Brown JPR, Clark AM, Dalal H, Welch K, Taylor RS. Patient education in the management of coronary heart disease. *Cochrane Database of Systematic Reviews* 2011, Issue 12. [DOI: 10.1002/14651858.CD008895]
- Chan 2013**  
 Chan AW, Tetzlaff JM, Altman DG, Laupacis A, Gøtzsche PC, Krlež a-Jerić K, et al. SPIRIT 2013 statement: defining standard protocol items for clinical trials. *Annals of internal medicine* 2013;**158**(3):200–7.

**Clark 2012**

Clark AM, King-Shier KM, Thompson DR, Spaling MA, Duncan AS, Stone JA, et al. A qualitative systematic review of influences on attendance at cardiac rehabilitation programs after referral. *American Heart Journal* 2012;**164**(6):835–45.

**Clausen 1976**

Clausen JP, Trap-Jensen J. Heart rate and arterial blood pressure during exercise in patients with angina pectoris: effects of exercise training and of nitroglycerin. *Circulation* 1976;**53**:436–42.

**Cohen 1988**

Cohen J. *Statistical power analysis in the behavioural sciences*. 2nd Edition. Hillsdale, New Jersey: Lawrence Erlbaum Associates Inc, 1988.

**Crea 1990**

Crea F, Pupita G, Galassi AR, El-Tamimi H, Kaski JC, Davies G, et al. Role of adenosine in pathogenesis of angina pain. *Circulation* 1990;**81**:164–72.

**Egger 1997**

Egger M, Davey Smith G, Schneider M, Minder C. Bias in meta-analysis detected by a simple, graphical test. *BMJ* 1997;**315**:629–34.

**Fihn 2012**

Fihn SD, Gardin JM, Abrams J, Berra K, Blankenship JC, Dallas AP. ACCF/AHA/ACP/AATS/PCNA/SCAI/STS Guideline for the Diagnosis and Management of Patients With Stable Ischemic Heart Disease. *Journal of American College of Cardiologists* 2012;**60**(24):e44–e164.

**Foreman 1999**

Foreman RD. Mechanisms of cardiac pain. *Annual Review of Physiology* 1999;**61**:143.

**GRADEpro GDT 2015**

GRADEpro GTD: GRADEpro Guideline Development Tool [software]. McMaster University, 2015 (developed by Evidence Prime, Inc). Available from [www.gradepro.org](http://www.gradepro.org).

**Hambrecht 2000**

Hambrecht R, Wolff A, Gielen S, Linke A, Hofer J, Erbs S, et al. Effect of exercise on coronary endothelial function in patients with coronary artery disease. *New England Journal of Medicine* 2000;**342**:454–60.

**Hemingway 2006**

Hemingway H, McCallum A, Shipley M, Manderbacka K, Martikainen P, Keskimaki I. Incidence and prognostic implications of stable angina pectoris among women and men. *Journal of the American Medical Association* 2006;**295**:1404–11.

**Heran 2008a**

Heran BS, Wong MM, Heran IK, Wright JM. Blood pressure lowering efficacy of angiotensin converting enzyme (ACE) inhibitors for primary hypertension. *Cochrane Database of Systematic Reviews* 2008, Issue 4. [DOI: 10.1002/14651858.CD003823.pub2]

**Heran 2008b**

Heran BS, Wong MMY, Heran IK, Wright JM. Blood pressure lowering efficacy of angiotensin receptor blockers for primary hypertension. *Cochrane Database of Systematic Reviews* 2008, Issue 4. [DOI: 10.1002/14651858.CD003822.pub2]

**Higgins 2011**

Higgins JPT, Green S (editors). *Cochrane Handbook for Systematic Reviews of Interventions Version 5.1.0 [updated March 2011]* The Cochrane Collaboration. Available from [handbook.cochrane.org](http://handbook.cochrane.org). The Cochrane Collaboration, 2011.

**Karmali 2014**

Karmali KN, Davies P, Taylor F, Beswick A, Martin N, Ebrahim S. Promoting patient uptake and adherence in cardiac rehabilitation. *Cochrane Database of Systematic Reviews* 2014, Issue 6. [DOI: 10.1002/14651858.CD007131.pub3]

**Lavie 2011**

Lavie CJ, Milani RV, O'Keefe JH, Lavie TJ. Impact of exercise training on psychological risk factors. *Progress in Cardiovascular Diseases* 2011;**53**:464–70.

**Lavie 2015**

Lavie CJ, Arena R, Swift DL, Johannsen NM, Sui X, Lee DC, et al. Exercise and the cardiovascular system: clinical science and cardiovascular outcomes. *Circulation Research* 2015;**117**(2):207–19.

**Lefebvre 2011**

Lefebvre C, Manheimer E, Glanville J. Chapter 6: Searching for studies. In: Higgins JPT, Green S editor(s). *Cochrane Handbook for Systematic Reviews of Interventions. Version 5.1 [updated March 2011]*. The Cochrane Collaboration, 2011. Available from [www.cochrane-handbook.org](http://www.cochrane-handbook.org).

**Lewin 2010**

Lewin RJP, Petre C, Morton V, Onion N, Mortzou G. The National Audit of Cardiac Rehabilitation: 4th Annual Statistical Report 2010. British Heart Foundation, London 2010.

**Montalescot 2013**

Montalescot G, Sechtem U, Achenbach S, Andreotti F, Arden C, Budaj A, et al. 2013 ESC guidelines on the management of stable coronary artery disease. *European Heart Journal* 2013;**34**(38):2949–3003.

**NACR 2016**

British Heart Foundation. The National Audit of Cardiac Rehabilitation; Annual Statistical Report. [www.cardiacrehabilitation.org.uk/docs/BHF\\_NACR\\_Report\\_2016.pdf](http://www.cardiacrehabilitation.org.uk/docs/BHF_NACR_Report_2016.pdf) 2016 (accessed 01 June 2017).

**NHLBI 2012**

National Heart, Lung and Blood Institute. 2012 NHLBI Morbidity and Mortality Chart Book. Bethesda, MD 2012.

**NICE 2011**

National institute for Health and Clinical Excellence. CG126: Stable Angina (Full Guideline). National Clinical Guidelines Centre, London 2011.



**Pavy 2006**

Pavy B, Iliou MC, Meurin P, Tabet JY, Corone S. Safety of exercise training for cardiac patients: results of the French registry of complications during cardiac rehabilitation. *Arch Intern Med* 2006;**166**:2329–34.

**RevMan 2014 [Computer program]**

The Cochrane Collaboration. Review Manager (RevMan). Version 5.3. Copenhagen: The Nordic Cochrane Centre: The Cochrane Collaboration, 2014.

**Schünemann 2011**

Schünemann HJ, Oxman AD, Vist GE, Higgins JPT, Deeks JJ, Glasziou P, et al. Chapter 12: Interpreting results and drawing conclusions. In: Higgins JPT, Green S (editors), *Cochrane Handbook for Systematic Reviews of Interventions*. Available from [www.cochrane-handbook.org](http://www.cochrane-handbook.org).

**Sibilitz 2016**

Sibilitz KL, Berg SK, Tang LH, Risom SS, Gluud C, Lindschou J, et al. Exercise-based cardiac rehabilitation for adults after heart valve surgery. *Cochrane Database of Systematic Reviews* 2016, Issue 3. [DOI: 10.1002/14651858.CD010876]

**Smith 2011**

Smith SC, Benjamin EJ, Bonow RO, Braun LT, Creager MA, Franklin BA, et al. AHA/ACCF secondary prevention and risk reduction therapy for patients with coronary and other atherosclerotic vascular disease: 2011 update: a guideline from the American Heart Association and American College of Cardiology Foundation endorsed by the World Heart Federation and the Preventive Cardiovascular Nurses Association. *Journal of the American college of cardiology* 2011;**58**(23):2432–46.

**StataCorp 2013 [Computer program]**

StataCorp. Stata Statistical Software: Release 13. College Station, TX: StataCorp, 2013.

**Taylor 2006**

Taylor RS, Unal B, Critchley JA, Capewell S. Mortality reductions in patients receiving exercise-based cardiac rehabilitation: How much can be attributed to cardiovascular risk factors improvements?. *European Journal of Cardiopulmonary Rehabilitation* 2006;**136**:369–74.

**Taylor 2010**

Taylor RS, Dalal H, Jolly K, Moxham T, Zawada A. Home-based versus centre-based cardiac rehabilitation. *Cochrane Database of Systematic Reviews* 2010, Issue 1. [DOI: 10.1002/14651858.CD007130.pub2]

**Taylor 2014**

Taylor RS, Sagar VA, Davies EJ, Briscoe S, Coats AJS, Dalal H, et al. Exercise-based rehabilitation for heart failure. *Cochrane Database of Systematic Reviews* 2014, Issue 4. [DOI: 10.1002/14651858.CD003331.pub4]

**Taylor 2015**

Taylor RS, Dalal H, Jolly K, Zawada A, Dean SG, Cowie A, et al. Home-based versus centre-based cardiac rehabilitation. *Cochrane Database of Systematic Reviews* 2015, Issue 8. [DOI: 10.1002/14651858.CD007130]

**Van Camp 1986**

Van Camp SP, Peterson RA. Cardiovascular complications of outpatient cardiac rehabilitation programs. *JAMA* 1986;**256**:1160–3.

**Vos 2012**

Vos T, Flaxman AD, Naghavi M, Lozano R, Michaud C, Ezzati M, et al. Years lived with disability (YLDs) for 1160 sequelae of 289 diseases and injuries 1990–2010: a systematic analysis for the Global Burden of Disease Study 2010. *Lancet* 2012;**380**(9859):2163–96.

**WHO 2014**

World Health Organization. The top 10 causes of death. Fact sheet No. 310. [www.who.int/mediacentre/factsheets/fs310/en/](http://www.who.int/mediacentre/factsheets/fs310/en/) Updated Jan 2017.

\* Indicates the major publication for the study

## CHARACTERISTICS OF STUDIES

### Characteristics of included studies [ordered by study ID]

#### Devi 2014

Methods	<p><b>Study design:</b> RCT</p> <p><b>No. of centres:</b> 1</p> <p><b>Country:</b> United Kingdom</p> <p><b>Dates participants recruited:</b> September 2008-February 2010</p> <p><b>When randomised:</b> after written consent and all baseline measures were collected (approximately 48 hours)</p> <p><b>Maximum follow up:</b> 6 months</p>
Participants	<p><b>Inclusion criteria:</b> confirmed diagnosis of stable angina, able to read and speak fluent English, had regular access to the Internet, were computer literate and had not had conventional cardiac rehabilitation within the previous year</p> <p><b>Exclusion criteria:</b> unstable angina, significant cardiac arrhythmia, any co-morbidities preventing physical activity, or were severely anxious/depressed. Severely anxious/depressed participants were excluded by eliminating anyone with a history of being prescribed medication for either anxiety or depression</p> <p><b>N randomised:</b> total: 94; intervention: 48; comparator: 46 (47 randomised to comparator but 1 dropped out at baseline)</p> <p><b>Diagnosis (% of participants):</b></p> <ul style="list-style-type: none"> <li>• <b>Angina pectoris:</b> intervention: 100%; comparator: 100%</li> <li>• <b>Previous AMI:</b> not reported</li> <li>• <b>Previous PCI:</b> intervention: 35%; comparator: 49%</li> <li>• <b>Previous CABG:</b> intervention: 21%; comparator: 14%</li> <li>• <b>Acute coronary event:</b> not reported</li> </ul> <p><b>Age (mean ±SD):</b> total: 66.24; intervention: 66.27±8.35; comparator: 66.20±10.06</p> <p><b>Percentage male:</b> total: 74%; intervention: 71%; comparator: 78%</p> <p><b>Ethnicity:</b> 91% White British, 9% other</p>
Interventions	<p><b>Description:</b> online web-based intervention with physical activity measured over a 2-day period using a monitor</p> <p>The intervention was delivered at home via the Internet and called 'ActivateYourHeart' Individuals were given tailored goals for exercise.</p> <p>The programme aimed to improve participants' cardiac risk profile within 4 stages and was designed to be completed within 6 weeks. Baseline data were used to set individualised, tailored goals focused on exercise, diet, emotions and smoking behaviour. The intervention used the following behaviour change techniques: setting/reviewing behavioural goals, self-monitoring, feedback on behaviour, graded tasks, social reward, providing information about health consequences, and reducing negative emotions.</p> <p><b>Components:</b> exercise, education and behaviour change techniques</p> <p><b>Modality:</b> being "physically active". This was determined by online assessment by meeting goals (online exercise diary)</p> <p><b>Dose:</b> individualised daily exercise (most commonly walking)</p> <p><b>Length of session:</b> not reported</p> <p><b>Frequency:</b> daily</p> <p><b>Intensity:</b> "moderate"</p>

	<p><b>Resistance training included?</b> Not reported  <b>Total duration:</b> 6 weeks  <b>Intermittent nurse or exercise specialist support?</b>  Programme users could initiate contact with cardiac rehabilitation nurses for advice and support via an online email link or by joining a scheduled synchronized chat room held on a weekly basis. The cardiac nurses were based at University Hospitals of Leicester.  <b>Co-interventions:</b> diet (e.g. eating more fruit/vegetables and reducing salt intake), emotions (e.g. managing stress and other negative emotions), and smoking (e.g. reduce cigarette smoking if relevant) goals were also set  <b>Comparator:</b>  <b>Description:</b> participants continued with treatment as usual from their GP and received no further contact from the researcher until the 6-week follow-up. Usual care in primary care for this population in the UK constitutes being placed on a CHD register and attending an annual check of risk factor management, usually with a practice nurse.  <b>Co-interventions:</b> not reported</p>	
Outcomes	HRQL and anxiety and depression (assessed using validated instruments (Seattle Angina Questionnaire (SAQ) and The MacNew questionnaire))	
Notes	The exercise was self-directed and documented by participants and not led by clinicians Trial was registered with the ISRCTN registry. Registration number: ISRCTN90110503	
<b>Risk of bias</b>		
<b>Bias</b>	<b>Authors' judgement</b>	<b>Support for judgement</b>
Random sequence generation (selection bias)	Low risk	"A computerized block randomization list was produced by our departmental statistician"
Allocation concealment (selection bias)	Low risk	"Allocation concealment was achieved by sequentially numbered sealed envelopes, opened after baseline data collection for each participant by the researcher carrying out the fieldwork"
Blinding of outcome assessment (detection bias) All outcomes	High risk	"Participants and the outcome assessor were not blinded to group allocation"
Incomplete outcome data (attrition bias) All outcomes	Low risk	All withdrawals and dropouts described, with similar reasons for missing outcome data comparable across groups 10/95 (11% attrition) dropped out at 6 weeks and 21/95 (23% attrition) dropped out at 6 months
Selective reporting (reporting bias)	High risk	Two intended outcomes (cost and level of positivity) originally reported in the trial

**Devi 2014** (Continued)

		protocol were not reported or mentioned in the full report
Groups balanced at baseline	Low risk	Demographic characteristics of both groups were well balanced
Groups received comparable care except the intervention	High risk	<p>Intervention group participants were offered a 6-week web-based rehabilitation programme while control group received usual care by GP that set individualized tailored goals focused on exercise (e.g. being physically active for 30 minutes, 5 times a week), diet (e.g. eating more fruit/vegetables and reducing salt intake), emotions (e.g. managing stress and other negative emotions), and smoking (e.g. reduce cigarette smoking if relevant)</p> <p>“The program also contained information to help users understand heart disease. Program users could initiate contact with cardiac rehabilitation nurses for advice and support via an online email link or by joining a scheduled synchronized chat room held on a weekly basis.”</p> <p>Not offered to control group.</p>

**Hambrecht 2004**

Methods	<p><b>Study design:</b> RCT</p> <p><b>No. of centres:</b> 1</p> <p><b>Country:</b> Germany</p> <p><b>Dates participants recruited:</b> March 1997-March 2001</p> <p><b>When randomised:</b> March 1997-March 2001</p> <p><b>Maximum follow up:</b> 12 months</p>
Participants	<p><b>Inclusion criteria:</b> eligible participants had class I to III angina pectoris (classified according to the Canadian Cardiovascular Society) with documented myocardial ischaemia during stress ECG and/or 99mTc scintigraphy. Only participants living within a 25 km radius of the host institution were recruited.</p> <p><b>Exclusion criteria:</b> acute coronary syndromes or recent myocardial infarction (&lt; 2 months), left main coronary artery stenosis &gt; 25% or high-grade proximal left anterior descending artery stenosis, reduced left ventricular function (ejection fraction &lt; 40%) , significant valvular heart disease, insulin-dependent diabetes mellitus, smoking, and occupational, orthopaedic, and other conditions that precluded regular exercise. Participants after previous CABG or PCI within the last 12 months were also excluded</p> <p><b>N randomised:</b> total: 101; intervention: 51; comparator: 50</p> <p><b>Diagnosis (% of participants):</b></p> <ul style="list-style-type: none"> <li>• <b>Angina pectoris:</b> intervention: 100%; comparator: 100%</li> </ul>

	<ul style="list-style-type: none"> <li>• <b>Previous AMI:</b> intervention: 52%; comparator: 39%</li> <li>• <b>Previous PCI:</b> not reported</li> <li>• <b>Previous CABG:</b> not reported</li> <li>• <b>Acute coronary event:</b> intervention: 52%; comparator: 39%</li> </ul> <p><b>Age (mean ±SD):</b> total: not reported; intervention: 62±1; comparator: 60±1  <b>Percentage male:</b> 100%  <b>Ethnicity:</b> not reported</p>	
Interventions	<p><b>Description:</b> during the first 2 weeks, participants exercised in the hospital 6 times per day for 10 minutes on a bicycle ergometer at 70% of the symptom-limited maximal heart rate</p> <p>Before discharge from the hospital, a maximal symptom-limited ergospirometry was performed to calculate the target heart rate for home training, which was defined as 70% of the maximal heart rate during symptom-limited exercise</p> <p>participants were asked to exercise on their bicycle ergometer close to the target heart rate for 20 minutes per day and to participate in one 60-minute group training session of aerobic exercise per week.</p> <p><b>Components:</b> exercise only  <b>Modality:</b> bicycle ergometer  <b>Dose:</b> 48 x 7 x 20 mins  <b>Length of session:</b> 20 minutes  <b>Frequency:</b> daily  <b>Intensity:</b> not reported  <b>Resistance training included?</b> no  <b>Total duration:</b> 12 months  <b>Intermittent nurse or exercise specialist support?</b> Not reported  <b>Co-interventions:</b> participants recommended to receive acetylsalicyl acid, beta-blockers, angiotensin-converting enzyme inhibitors and statins (according to common guidelines)  <b>Comparator:</b>  <b>Description:</b>  The control group all received standard PCI (to target lesion performed 14.8 +/- 3.3 days post randomisation) but no exercise  <b>Co-interventions:</b>  All participants were given acetylsalicylic acid (100 mg/d) and clopidogrel (300 mg/d) on the day before the procedure</p>	
Outcomes	<p>Angina symptoms (CCS), exercise capacity, revascularisations, myocardial infarction, cost effectiveness, combined clinical endpoint (death cardiac, stroke, CABG, PCI, AMI, worsening angina with objective evidence resulting in hospitalisation)</p>	
Notes	<p>Source of Funding: unconditional scientific grant from Aventis Germany  Conflicts of Interest: does not declare conflict of interest  Two-year results of this study are reported by Walther 2008.</p>	
<b>Risk of bias</b>		
<b>Bias</b>	<b>Authors' judgement</b>	<b>Support for judgement</b>

**Hambrecht 2004** (Continued)

Random sequence generation (selection bias)	Unclear risk	Unclear if clinician or participant-led treatment allocation: "Patients were randomly assigned to either stent angioplasty or exercise training by drawing an envelope with the treatment assignment enclosed"
Allocation concealment (selection bias)	Unclear risk	It is unclear if envelopes were sequentially numbered or opaque
Blinding of outcome assessment (detection bias) All outcomes	Low risk	"Initially and after 12 months, the angina pectoris status of all participants was classified according to CCS class by a physician blinded for patient assignment, and a symptom-limited ergospirometry was performed"
Incomplete outcome data (attrition bias) All outcomes	Low risk	All dropouts and withdrawals were described. Intervention: 4/51 lost to follow-up Control: 3/50 lost to follow-up No loss to follow-up for primary endpoint analysis
Selective reporting (reporting bias)	Unclear risk	Study protocol was not available
Groups balanced at baseline	Low risk	"Both groups were comparable with regard to baseline characteristics and medical therapy (Table 1), which remained unchanged during follow-up"
Groups received comparable care except the intervention	Low risk	"The control group all received PCI as part of the study however repeat coronary angiography was performed to assess the long-term result of the coronary intervention in the PCI group and to monitor the progression of atherosclerosis in both groups."

**Jiang 2007**

Methods	<p><b>Study design:</b> RCT  <b>No. of centres:</b> 1  <b>Country:</b> China  <b>Dates participants recruited:</b> September 2002-December 2003  <b>When randomised:</b> unclear  <b>Maximum follow up:</b> 6 months</p>
---------	--

<p>Participants</p>	<p><b>Inclusion criteria:</b> first hospitalisation with either angina pectoris or myocardial infarction, willing to participate in this study, able to speak, read and write Chinese, living at home with family after hospital discharge, living in Chengdu and available for telephone follow-up, and with fasting blood sample taken for lipid test within 24 hours of hospitalisation</p> <p><b>Exclusion criteria:</b> planning for surgical treatment; with pre-existing mobility problems; with hypothyroidism or nephrotic syndrome; with diagnosed psychosis or currently undergoing anti-psychosis treatment; and with terminal illness</p> <p><b>N Randomised:</b> total: 167; intervention: 83; comparator: 84</p> <p><b>Diagnosis (% of participants):</b></p> <ul style="list-style-type: none"> <li>● <b>Angina pectoris:</b> intervention: 67.5%; comparator: 69%</li> <li>● <b>Previous AMI:</b> intervention: 32.5%; comparator: 31%</li> <li>● <b>Previous PCI:</b> intervention: 33.7%; comparator: 23.8%</li> <li>● <b>Previous CABG:</b> not reported</li> <li>● <b>Acute coronary event:</b> intervention: 32.5%; comparator: 30.95%</li> </ul> <p><b>Age (mean ±SD):</b> total: not reported; intervention: 62.11±97.44; comparator: 61.37±7.61</p> <p><b>Percentage male:</b> total: 71.2%; intervention: 68.7%; comparator: 73.8%</p> <p><b>Ethnicity:</b> NR</p>
<p>Interventions</p>	<p><b>Description:</b> 12-week home-based cardiac rehabilitation intervention in two phases: hospital-based patient/family education (topics included physical exercise) and home-based rehabilitation care which included setting daily behavioural goals for walking performance</p> <p><b>Components:</b> exercise and behaviour change</p> <p><b>Modality:</b> walking</p> <p><b>Dose:</b> NR</p> <p><b>Length of session:</b> NR</p> <p><b>Frequency:</b> NR</p> <p><b>Intensity:</b> NR</p> <p><b>Resistance training included?</b> No</p> <p><b>Total duration:</b> 12 weeks</p> <p><b>Intermittent nurse or exercise specialist support?</b> Patients were supervised, coached and supported by an experienced cardiac nurse throughout a 12-week period. Follow-up care was via home visits and telephone calls</p> <p><b>Co-interventions:</b> education given regarding CHD, medication management, angina prevention and management, smoking cessation and family support. Family members were encouraged and instructed to participate in lifestyle change and provide support to patient</p> <p><b>Comparator:</b></p> <p><b>Description:</b> routine care</p> <p><b>Co-interventions:</b> none</p>
<p>Outcomes</p>	<p>Exercise capacity (Jenkins Activity Checklist for Walking)</p>
<p>Notes</p>	<p>Source of funding: The Hong Kong Polytechnic University, Hong Kong, China No usable data for our review was measured in this study.</p>
<p><i>Risk of bias</i></p>	

Jiang 2007 (Continued)

Bias	Authors' judgement	Support for judgement
Random sequence generation (selection bias)	Low risk	"Computer-generalized random table"
Allocation concealment (selection bias)	Unclear risk	Not reported
Blinding of outcome assessment (detection bias) All outcomes	Unclear risk	Not reported
Incomplete outcome data (attrition bias) All outcomes	Low risk	Intervention: 9/83 (11%) lost to follow-up Control: 17/84 (20%) lost to follow-up
Selective reporting (reporting bias)	Unclear risk	No protocol available
Groups balanced at baseline	Low risk	No differences between groups
Groups received comparable care except the intervention	Unclear risk	Intervention received education about a variety of topics (CHD and self-management principles, medication management, angina prevention and management, dietary management, smoking cessation and family support) in addition to exercise

Manchanda 2000

Methods	<p><b>Study design:</b> RCT  <b>No. of centres:</b> 1  <b>Country:</b> India  <b>Dates participants recruited:</b> NR  <b>When randomised:</b> NR  <b>Maximum follow up:</b> 12 months</p>
Participants	<p><b>Inclusion criteria:</b> have chronic stable angina and angiographically proven CAD  <b>Exclusion criteria:</b> participants with recent (within last six months) myocardial infarction or unstable angina  <b>N Randomised:</b> total: 42; intervention: 21; comparator: 21  <b>Diagnosis (% of participants):</b></p> <ul style="list-style-type: none"> <li>● <b>Angina pectoris:</b> intervention: 100%; comparator: 100%</li> <li>● <b>Previous AMI:</b> intervention: 33%; comparator: 29%</li> <li>● <b>Previous PCI:</b> not reported</li> <li>● <b>Previous CABG:</b> intervention: 10%; comparator: 5%</li> <li>● <b>Acute coronary event:</b> NR</li> </ul> <p><b>Age (mean ±SD):</b> total: NR; intervention: 51±9; comparator: 52±10  <b>Percentage male:</b> 100%  <b>Ethnicity:</b> not reported</p>



Interventions	<p><b>Description:</b> yoga lifestyle intervention programme, including yoga exercises, dietary management, moderate aerobic exercise and stress management  Participants and their spouses spent 4 days at a yoga residential centre undergoing training in yoga and various yogic lifestyle techniques. They did yoga exercises at home for 90 mins/day  Intervention consisted of yogic lifestyle techniques and stress management (health rejuvenation exercises, breathing exercises, relaxation exercises, stretch relaxation, and meditation), dietary control and moderate aerobic exercises  <b>Components:</b> exercises, psychosocial support and diet advice  <b>Modality:</b> yogic exercises and moderate aerobic exercises  <b>Dose:</b> 48 x 7 x 90 mins  <b>Length of session:</b> 90 minutes  <b>Frequency:</b> daily  <b>Intensity:</b> “moderate”  <b>Resistance training included?</b> NR  <b>Total duration:</b> 12 months  <b>Intermittent nurse or exercise specialist support?</b>  Yoga specialist support on a fortnightly basis; going to the hospital for assessment on a monthly basis  <b>Co-interventions:</b> relaxation, reflection, stress management, diet advice  <b>Comparator:</b>  <b>Description:</b>  Usual care (including medical therapy, risk factor control, diet advice and moderate aerobic exertion)  <b>Co-interventions:</b>  None described</p>
Outcomes	All-cause mortality, severity of angina, revascularisation, exercise capacity
Notes	<p>Source of Funding: Central Research Institute of Yoga, Ministry of Health, Government of India  Conflicts of Interest: NR</p>

**Risk of bias**

Bias	Authors' judgement	Support for judgement
Random sequence generation (selection bias)	Unclear risk	Not reported
Allocation concealment (selection bias)	Unclear risk	Not reported
Blinding of outcome assessment (detection bias) All outcomes	Unclear risk	Not reported
Incomplete outcome data (attrition bias) All outcomes	Unclear risk	Withdrawals and drop outs not described

Manchanda 2000 (Continued)

Selective reporting (reporting bias)	High risk	The study protocol was not available. In the methods section, participants are described as being assessed monthly but only results at 12 months are reported
Groups balanced at baseline	High risk	Participants in yoga group baseline experienced more angina episodes/week
Groups received comparable care except the intervention	High risk	“The active group was treated with a user-friendly program consisting of yoga, control of risk factors, diet control and moderate aerobic exercise. The control group was managed by conventional methods, i. e. risk factor control and American Heart Association step I diet.”

Raffo 1980

Methods	<p><b>Study design:</b> RCT  <b>No. of centres:</b> 1  <b>Country:</b> not reported  <b>Dates participants recruited:</b> not reported  <b>When randomised:</b> on entry to study  <b>Maximum follow up:</b> 6 months</p>
Participants	<p><b>Inclusion criteria:</b> diagnosis of stable angina pectoris  <b>Exclusion criteria:</b> participants with hypertension, valve disease, cardiac arrhythmia, and participants on digoxin, beta-blocker, or nifedipine therapy  <b>N Randomised:</b> total: 24; intervention: 12; comparator: 12  <b>Diagnosis (% of participants):</b></p> <ul style="list-style-type: none"> <li>• <b>Angina pectoris:</b> intervention: 100%; comparator: 100%</li> <li>• <b>Previous AMI:</b> intervention: 25%; comparator: 8%</li> <li>• <b>Previous PCI:</b> not reported</li> <li>• <b>Previous CABG:</b> not reported</li> <li>• <b>Acute coronary event:</b> not reported</li> </ul> <p><b>Age (mean ±SD):</b> total: 50; intervention: 51 (not reported); comparator: 49 (not reported)  <b>Percentage male:</b> total: 88%; intervention: 83%; comparator: 92%  <b>Ethnicity:</b> not reported</p>
Interventions	<p><b>Description:</b> the participants randomised into the training group undertook the Canadian Air Force programme (5BX/XBX) under supervision in the hospital which required only 11 to 12 minutes of daily physical training  The programme lasted six months, and during hospital sessions the participants exercised with electrodes attached in CM5 position  The participants started training at the lowest physical capacity level, and progressed by increasing this level according to their age and sex. If the level of exercise was well tolerated the patient was asked to perform the same level at home during the week and</p>

	<p>return so that the level could be adjusted under supervision                  If, during the performance of an increased level of exercise, anginal pain and/or ischaemic ST depression occurred, the participants were maintained at the previous level of exercise.  <b>Components:</b> exercise  <b>Modality:</b> Canadian Air Force Programme  <b>Dose:</b> 24 x 7 x 11  <b>Length of session:</b> 11-12 minutes (daily)  <b>Frequency:</b> daily (at home)  <b>Intensity:</b> training was started at lowest physical capacity level, and progressed by increasing this level according to age and sex  <b>Resistance training included?</b> Not reported  <b>Total duration:</b> 6 months  <b>Intermittent nurse or exercise specialist support?</b> Not reported  <b>Co-interventions:</b> advice and usual care from consultant cardiologist  <b>Comparator:</b>  <b>Description:</b> normal daily activities  <b>Co-interventions:</b> advice and usual care from consultant cardiologist</p>	
Outcomes	Exercise capacity	
Notes	Sources of Funding: British Heart Foundation and the Wellcome Trust Conflicts of interest: NR	
<b>Risk of bias</b>		
<b>Bias</b>	<b>Authors' judgement</b>	<b>Support for judgement</b>
Random sequence generation (selection bias)	Unclear risk	"On entry to the study, the patients were randomised into two groups." Randomisation process not described
Allocation concealment (selection bias)	Unclear risk	Not reported
Blinding of outcome assessment (detection bias) All outcomes	Low risk	Assessment of repeatability of test was blinded: "...HR/ST thresholds obtained were used for analysis of repeatability of the test, in a blinded fashion as was previously described; all tracings were copied and the five used in the repeatability tests were randomly interspersed by a person other than the observer."
Incomplete outcome data (attrition bias) All outcomes	High risk	Intervention: 0/12 (0%) lost to follow-up Control: 7/12 (58%) lost to follow-up "In the control group an independent decision to start medical treatment with drugs was made during routine cardiological follow-up on the basis of deterioration of symptoms."

**Raffo 1980** (Continued)

Selective reporting (reporting bias)	Unclear risk	Study protocol was not available
Groups balanced at baseline	Unclear risk	No significant differences in baseline characteristics however these were only data on age, gender and duration of exercise, no other clinical data gathered
Groups received comparable care except the intervention	Low risk	“Clinically, the two groups were managed identically by the consultant cardiologist (WW). Each patient was advised to stop smoking and avoid increases in body weight.”

**Schuler 1992**

Methods	<p><b>Study design:</b> RCT (same trial as Niebauer 1995)</p> <p><b>No. of centres:</b> 1</p> <p><b>Country:</b> Germany</p> <p><b>Dates participants recruited:</b> NR</p> <p><b>When randomised:</b> after introductory study familiarising participants with aims of study, randomisation process and alternative therapeutic approaches, and after written consent obtained</p> <p><b>Maximum follow up:</b> 12 months</p>
Participants	<p><b>Inclusion criteria:</b> male gender, stable symptoms, willingness to participate in the study for at least 12 months, coronary artery stenoses well documented by angiography, and permanent residence within 25 km of the training facilities at Heidelberg</p> <p><b>Exclusion criteria:</b> unstable angina pectoris, left main coronary artery stenosis &gt; 25% luminal diameter reduction, severely depressed left ventricular function (ejection fraction &lt; 35%), significant valvular heart disease, insulin-dependent diabetes mellitus, primary hypercholesterolemia (type II hyperlipoproteinemia, low density lipoprotein &gt; 210 mg/dl), and occupational, orthopaedic, and other conditions precluding regular participation in exercise sessions</p> <p><b>N Randomised:</b> total: 113; intervention: 56; comparator: 57</p> <p><b>Diagnosis (% of participants):</b> AMI 66%</p> <ul style="list-style-type: none"> <li>● <b>Angina pectoris:</b> intervention: 100%; comparator: 100%</li> <li>● <b>Previous AMI:</b> intervention: 60%; comparator: 70%</li> <li>● <b>Previous PCI:</b> not reported</li> <li>● <b>Previous CABG:</b> not reported</li> <li>● <b>Acute coronary event:</b> not reported</li> </ul> <p><b>Age (mean ±SD):</b> Total: not reported; intervention: 52.8±5.8; comparator: 54.2±7.7</p> <p><b>Percentage male:</b> 100%</p> <p><b>Ethnicity:</b> not reported</p>
Interventions	<p><b>Description:</b> regular physical exercise and low fat diet (diet advice given during initial 3-week stay on metabolic ward). Daily exercise at home on a cycle ergometer for a minimum of 20 minutes close to their target heart rates, which were determined as 75%</p>

	<p>of the maximal heart rate during symptom-limited exercise</p> <p>In addition, participants were expected to participate in at least two group training sessions consisting of intensive physical exercise of 60 minutes each week</p> <p><b>Components:</b> exercise, educational and behavioural</p> <p><b>Modality:</b> cycle ergometer</p> <p><b>Dose:</b> 48 x 7x 30 mins (daily exercise) plus 48 x 2 60 mins (weekly exercise)</p> <p><b>Length of session:</b> 30 minutes minimum</p> <p><b>Frequency:</b> daily</p> <p><b>Intensity:</b> 75% maximal heart rate during symptom-limited exercise</p> <p><b>Resistance training included?</b> No</p> <p><b>Total duration:</b> 12 months</p> <p><b>Intermittent nurse or exercise specialist support?</b></p> <p>Instructions, given during initial 3 weeks on a metabolic ward, on how to lower the fat content of their regular diet. Information sessions conducted at regular intervals five times a year for participants and their spouses to discuss dietary, psychosocial, and exercise-related problems. In addition, participants were offered opportunities to discuss personal questions and problems after each training session. Does not state who delivers this. Not performed for control group</p> <p><b>Co-interventions:</b> regular anti-anginal medication (including beta blocking agents), low cholesterol diet and advice (as above)</p> <p><b>Comparator:</b></p> <p><b>Description:</b> usual care rendered by private physicians. participants assigned to the control group spent 1 week on the metabolic ward, where they received identical instructions about the necessity of regular physical exercise and how to lower fat consumption. They were served a low-fat diet corresponding to the American Heart Association recommendations, phase 1, and they were encouraged to participate in local coronary exercise groups. Adherence to these guidelines was left to their own initiative</p> <p><b>Co-interventions:</b> participants in control group asked not to take lipid lowering medications</p>	
Outcomes	All-cause mortality, myocardial infarction, revascularisations, exercise capacity, adverse events	
Notes	Source of funding: grant from Bundesministerium fir Forschung und Technologie, Bonn, FRG	
<b>Risk of bias</b>		
<b>Bias</b>	<b>Authors' judgement</b>	<b>Support for judgement</b>
Random sequence generation (selection bias)	Unclear risk	Process of sequence generation not described
Allocation concealment (selection bias)	Unclear risk	"Sealed envelopes were used to randomize participants between intervention and control groups."
Blinding of outcome assessment (detection bias) All outcomes	Unclear risk	No details of blinding for outcomes were reported.

Schuler 1992 (Continued)

Incomplete outcome data (attrition bias) All outcomes	High risk	Intervention: 16/56 (29 %) lost to follow-up Control: 5/57 (9%) lost to follow-up
Selective reporting (reporting bias)	Unclear risk	Study protocol was not available
Groups balanced at baseline	Low risk	No significant differences in baseline characteristics
Groups received comparable care except the intervention	High risk	<p>“Patients assigned to the control group spent 1 week on the metabolic ward, where they received identical instructions about the necessity of regular physical exercise and how to lower fat consumption. They were served a low-fat diet corresponding to the American Heart Association recommendations, phase 1,30 and they were encouraged to participate in local coronary exercise groups. Adherence to these guidelines, however, was left to their own initiative, and “usual care“ was rendered by their private physicians. They were asked not to take lipid-lowering medications.”</p> <p>In addition to receiving exercise and dietary advice, the intervention group also received regular information sessions “conducted at regular intervals five times a year for participants and their spouses to discuss dietary, psychosocial, and exercise-related problems”</p>

Todd 1991

Methods	<p><b>Study design:</b> RCT  <b>No. of centres:</b> 1  <b>Country:</b> United Kingdom  <b>Dates participants recruited:</b> not reported  <b>When randomised:</b> after study by planar thallium scintigraphy, they were then randomised  <b>Maximum follow up:</b> 12 months</p>
Participants	<p><b>Inclusion criteria:</b> &lt; 60 years old, male, chronic stable angina ≥ 6 months’ duration and a positive exercise tolerance test  <b>Exclusion criteria:</b> previous myocardial infarction, coronary bypass surgery or angioplasty, recent unstable angina, diabetes mellitus, uncontrolled hypertension, valvular heart disease and physical handicap  <b>N Randomised:</b> total: 40; intervention: 20; comparator: 20</p>

	<p><b>Diagnosis (% of participants):</b></p> <ul style="list-style-type: none"> <li>● <b>Angina pectoris:</b> intervention: 100%; comparator: 100%</li> <li>● <b>Previous AMI:</b> intervention: 0%; comparator: 0%</li> <li>● <b>Previous PCI:</b> intervention: 0%; comparator: 0%</li> <li>● <b>Previous CABG:</b> intervention: 0%; comparator: 0%</li> <li>● <b>Acute coronary event:</b> not reported</li> </ul> <p><b>Age (mean ±SD):</b> total: 52; intervention: 53; comparator: 51</p> <p><b>Percentage male:</b> 100%</p> <p><b>Ethnicity:</b> not reported</p>	
Interventions	<p><b>Description:</b> the training group undertook the Canadian Airforce Program for Physical Fitness. This is a brief 11 -minute daily exercise program of 5 callisthenic exercises requiring no equipment. It was prescribed for daily home use, with exercise levels increasing in intensity at weekly intervals to achieve a progressive increase in physical fitness. Participants moved to the next level if the previous level could be completed within 11 minutes without excessive chest pain or dyspnoea. No limit was placed on the maximum exercise level</p> <p>A weekly hospital supervised session was used to initiate new participants and monitor early progress</p> <p><b>Components:</b> exercise</p> <p><b>Modality:</b> brief "callisthenic exercises"</p> <p><b>Dose:</b> 48 x 7 x 11</p> <p><b>Length of session:</b> 11 minutes</p> <p><b>Frequency:</b> daily</p> <p><b>Intensity:</b> increasing intensity with no limit on maximum exercise level</p> <p><b>Resistance training included?</b> No</p> <p><b>Total duration:</b> 12 months</p> <p><b>Intermittent nurse or exercise specialist support?</b> Yes</p> <p><b>Co-interventions:</b> initial weekly hospital visit for monitoring. Subsequent attendance optional</p> <p><b>Comparator:</b></p> <p><b>Description:</b></p> <p>The control subjects were informed that mild exercise may be beneficial and were advised with respect to diet and smoking habits. They were formally followed up at 3-month intervals throughout the study, as was the exercise group, but were granted open access to the controlling physician at any time in order to counteract possible bias resulting from weekly contact with the exercise group.</p> <p><b>Co-interventions:</b> openly invited to hospital</p>	
Outcomes	All-cause mortality, myocardial infarction, exercise capacity	
Notes		
<i>Risk of bias</i>		
<b>Bias</b>	<b>Authors' judgement</b>	<b>Support for judgement</b>

**Todd 1991** (Continued)

Random sequence generation (selection bias)	Unclear risk	"After thallium scintigraphy, patients were randomly allocated to training and control groups" No description of randomisation process
Allocation concealment (selection bias)	Unclear risk	Not reported
Blinding of outcome assessment (detection bias) All outcomes	Unclear risk	Blinding not reported
Incomplete outcome data (attrition bias) All outcomes	Low risk	All withdrawals and drop outs described Intervention: 3/20 (15%) lost to follow-up Control: 4/20 (20%) lost to follow-up
Selective reporting (reporting bias)	Unclear risk	Study protocol was not available
Groups balanced at baseline	Low risk	"There were no significant differences between the groups"
Groups received comparable care except the intervention	Low risk	Control group received advice on exercise, smoking and diet

AMI: acute myocardial infarction

CABG: coronary artery bypass graft

CAD: coronary artery disease

CCS: Canadian Cardiovascular Society

CHD: coronary heart disease

ECG: electrocardiogram

GP: general practitioner

HRQL: health-related quality of life

N: number

NR: not reported

PCI: percutaneous coronary intervention

RCT: randomised controlled trial

SD: standard deviation

**Characteristics of excluded studies** [ordered by study ID]



Study	Reason for exclusion
<a href="#">Back 2008</a>	Participants receive exercise + PCI or no exercise + PCI and so we had concern that co-intervention (PCI) would confound the comparison
<a href="#">Byrkjeland 2015</a>	Mixed population-angina population < 50%
<a href="#">Jiang 2013</a>	Comparator received exercise
<a href="#">Johnson 2009</a>	Mixed population-angina population < 50%
<a href="#">Kay 2000</a>	Comparator received exercise
<a href="#">Linxue 1999</a>	Mixed population-angina population < 50%
<a href="#">Malmborg 1974</a>	Follow-up only 4 months
<a href="#">Menna 1977</a>	Conference abstract - paper not published in full. Unable to contact authors to check for inclusion due to age of publication
<a href="#">Michalsen 2006</a>	No structured exercise component
<a href="#">Myers 1987</a>	Population included mixed CHD
<a href="#">Onishi 2010</a>	Mixed population-angina population < 50%
<a href="#">Sullivan 1985</a>	Population did not have angina
<a href="#">Wang 2014</a>	No structured exercise component
<a href="#">Weberg 2013</a>	Mixed population-angina population < 50%

CHD: coronary heart disease

PCI: percutaneous coronary intervention

### Characteristics of ongoing studies *[ordered by study ID]*

#### [NCT00350922](#)

Trial name or title	A Clinical Trial of a Self-Management Education Program for People With Chronic Stable Angina
Methods	RCT
Participants	Adults with chronic stable angina

**NCT00350922** (Continued)

Interventions	Chronic Angina Self-Management Program
Outcomes	SF-36; Seattle Angina Questionnaire
Starting date	September 2003
Contact information	<a href="https://clinicaltrials.gov/ct2/show/NCT00350922">https://clinicaltrials.gov/ct2/show/NCT00350922</a> (last accessed 01 Sept 2017)
Notes	

**NCT01147952**

Trial name or title	The Effect of Exercise on Peripheral Blood Gene Expression in Angina
Methods	RCT
Participants	Adults with stable angina
Interventions	Exercise training
Outcomes	Seattle Angina questionnaire (SAQ)
Starting date	Not reported
Contact information	BMC Public Health 2010;10:620.
Notes	

## DATA AND ANALYSES

### Comparison 1. Exercise versus no exercise for stable angina

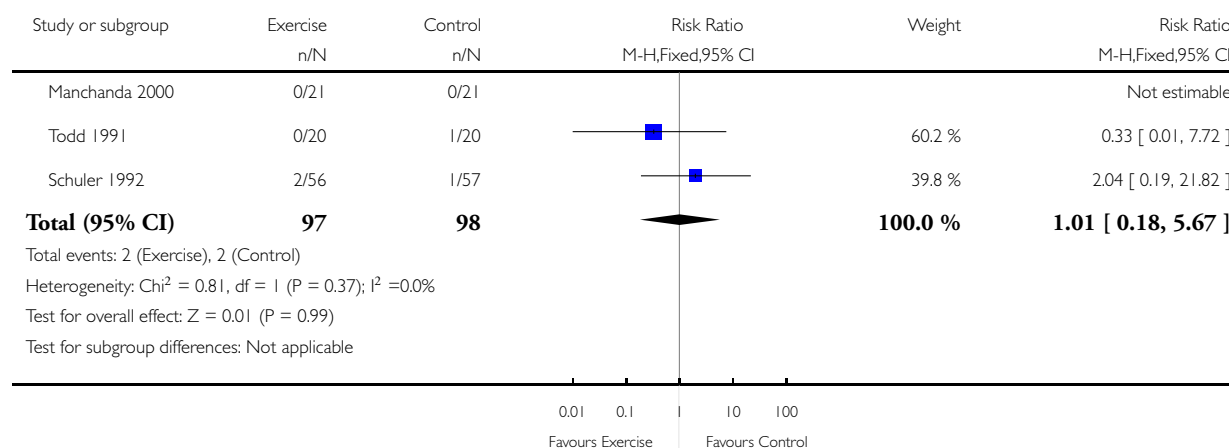
Outcome or subgroup title	No. of studies	No. of participants	Statistical method	Effect size
1 All-cause mortality	3	195	Risk Ratio (M-H, Fixed, 95% CI)	1.01 [0.18, 5.67]
2 Acute myocardial infarction (AMI)	3	254	Risk Ratio (M-H, Fixed, 95% CI)	0.33 [0.07, 1.63]
3 Revascularisation procedure (CABG or PCI)	3	256	Risk Ratio (M-H, Fixed, 95% CI)	0.27 [0.11, 0.64]
4 Exercise capacity	5	267	Std. Mean Difference (IV, Fixed, 95% CI)	0.45 [0.20, 0.70]
5 Cardiovascular-related hospital admissions	1	101	Risk Ratio (M-H, Fixed, 95% CI)	0.14 [0.02, 1.10]

#### Analysis 1.1. Comparison 1 Exercise versus no exercise for stable angina, Outcome 1 All-cause mortality.

Review: Exercise-based cardiac rehabilitation for adults with stable angina

Comparison: 1 Exercise versus no exercise for stable angina

Outcome: 1 All-cause mortality

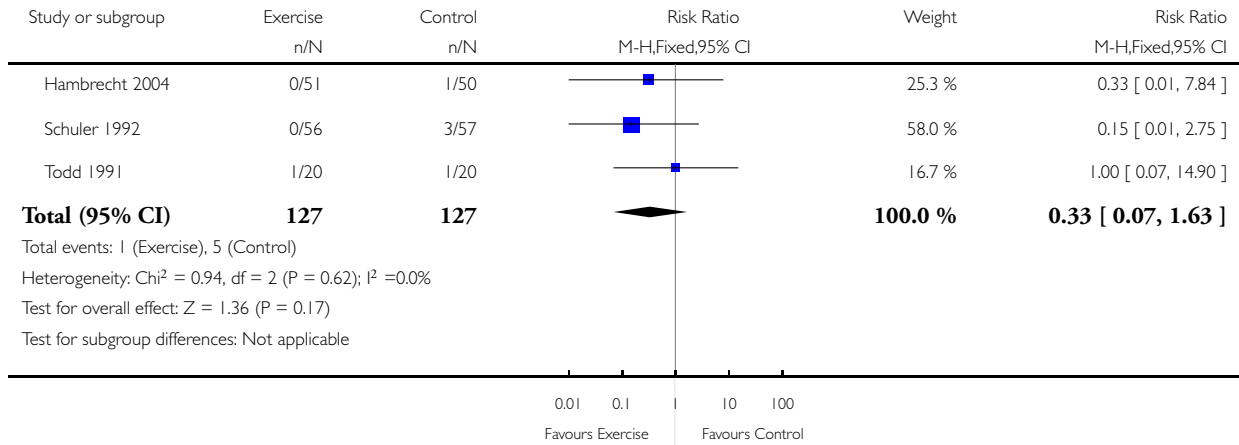


**Analysis 1.2. Comparison 1 Exercise versus no exercise for stable angina, Outcome 2 Acute myocardial infarction (AMI).**

Review: Exercise-based cardiac rehabilitation for adults with stable angina

Comparison: 1 Exercise versus no exercise for stable angina

Outcome: 2 Acute myocardial infarction (AMI)

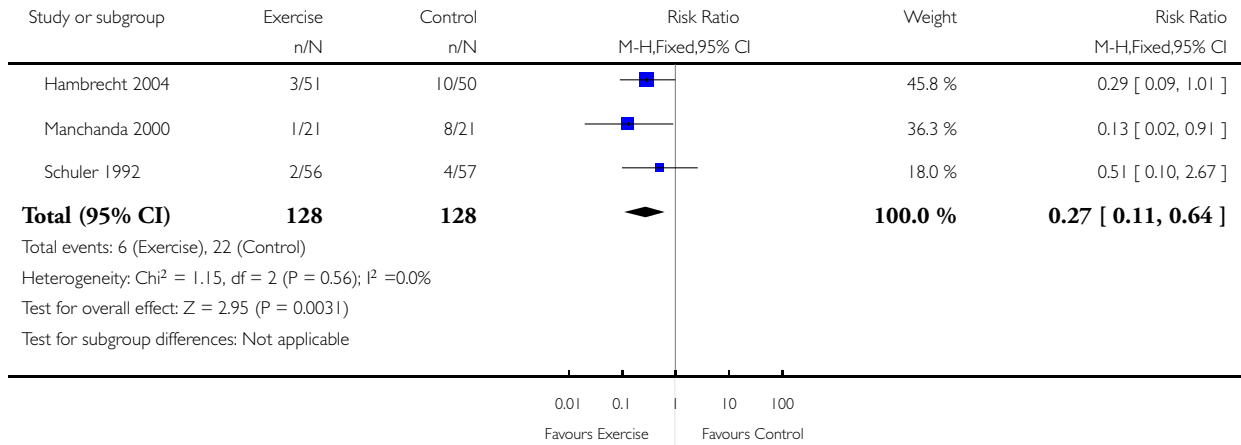


**Analysis 1.3. Comparison 1 Exercise versus no exercise for stable angina, Outcome 3 Revascularisation procedure (CABG or PCI).**

Review: Exercise-based cardiac rehabilitation for adults with stable angina

Comparison: 1 Exercise versus no exercise for stable angina

Outcome: 3 Revascularisation procedure (CABG or PCI)

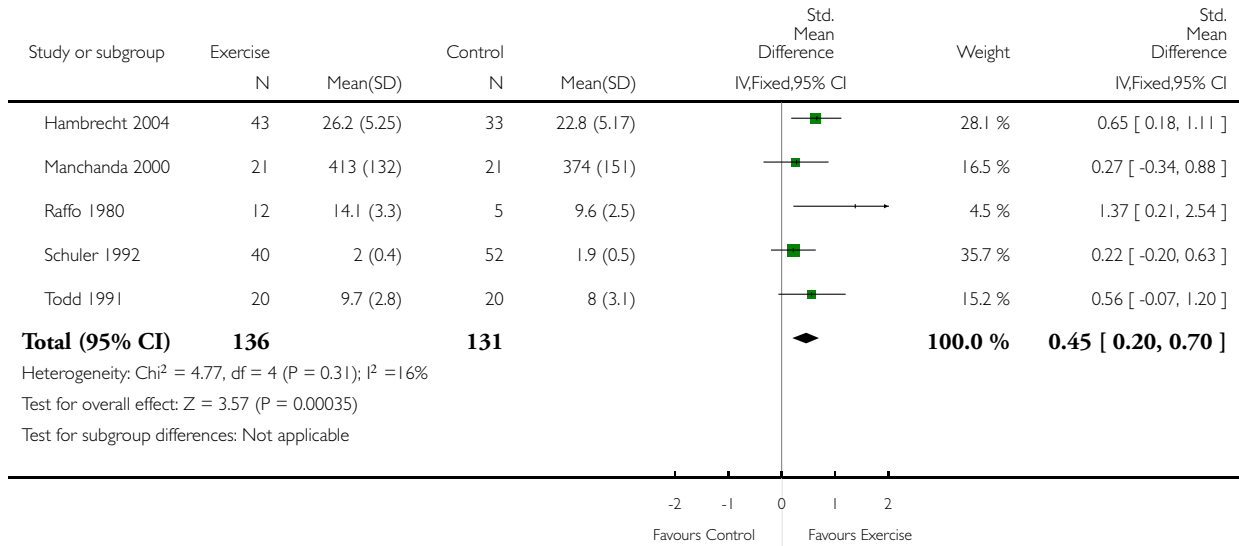


### Analysis 1.4. Comparison 1 Exercise versus no exercise for stable angina, Outcome 4 Exercise capacity.

Review: Exercise-based cardiac rehabilitation for adults with stable angina

Comparison: 1 Exercise versus no exercise for stable angina

Outcome: 4 Exercise capacity

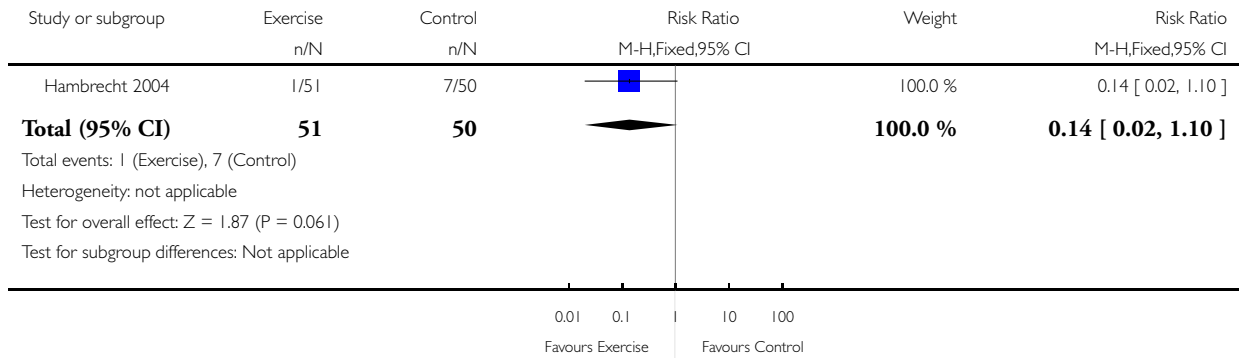


## Analysis 1.5. Comparison 1 Exercise versus no exercise for stable angina, Outcome 5 Cardiovascular-related hospital admissions.

Review: Exercise-based cardiac rehabilitation for adults with stable angina

Comparison: 1 Exercise versus no exercise for stable angina

Outcome: 5 Cardiovascular-related hospital admissions



## APPENDICES

### Appendix I. Search strategy

#### CENTRAL and DARE

- #1 MeSH descriptor: [Angina Pectoris] this term only
- #2 MeSH descriptor: [Angina, Unstable] this term only
- #3 angina\*
- #4 stenocardia\*
- #5 angor pectoris
- #6 #1 or #2 or #3 or #4 or #5
- #7 MeSH descriptor: [Exercise Therapy] explode all trees
- #8 MeSH descriptor: [Sports] this term only
- #9 MeSH descriptor: [Physical Exertion] this term only
- #10 rehabilitat\*
- #11 (physical\* near/5 (fit\* or train\* or therap\* or activit\*))
- #12 MeSH descriptor: [Exercise] explode all trees
- #13 (train\* near/5 (strength\* or aerobic\* or exercise\*))
- #14 ((exercise\* or fitness) near/3 (treatment or intervent\* or program\*))
- #15 MeSH descriptor: [Rehabilitation] explode all trees
- #16 kinesiotherap\*
- #17 MeSH descriptor: [Physical Education and Training] this term only
- #18 MeSH descriptor: [Patient Education as Topic] this term only
- #19 (patient\* near/5 educat\*)

- #20 ((lifestyle or life-style) near/5 (interven\* or program\* or treatment\*))
- #21 MeSH descriptor: [Self Care] this term only
- #22 (self near/5 (manag\* or care or motivate\*))
- #23 MeSH descriptor: [Psychotherapy] explode all trees
- #24 psychotherap\*
- #25 (psycholog\* near/5 intervent\*)
- #26 MeSH descriptor: [Counseling] this term only
- #27 (counselling or counseling)
- #28 ((behavior\* or behaviour\*) near/5 (modify or modificat\* or therap\* or change))
- #29 (psycho-educat\* or psychoeducat\*)
- #30 (motivat\* near/5 (intervention or interv\*))
- #31 MeSH descriptor: [Health Education] this term only
- #32 (health near/5 educat\*)
- #33 (psychosocial or psycho-social)
- #34 (cognitive near/2 behav\*)
- #35 #7 or #8 or #9 or #10 or #11 or #12 or #13 or #14 or #15 or #16 or #17 or #18 or #19 or #20 or #21 or #22 or #23 or #24 or #25 or #26 or #27 or #28 or #29 or #30 or #31 or #32 or #33 or #34
- #36 #6 and #35

#### **MEDLINE**

- 1 angina pectoris/ or angina, stable/
- 2 angina.tw.
- 3 stenocardia\*.tw.
- 4 angor pectoris.tw.
- 5 1 or 2 or 3 or 4
- 6 exp Exercise Therapy/
- 7 Sports/
- 8 Physical Exertion/
- 9 rehabilitat\*.tw.
- 10 (physical\* adj5 (fit\* or train\* or therap\* or activit\*)).tw.
- 11 exp Exercise/
- 12 (train\* adj5 (strength\* or aerobic\* or exercise\*)).tw.
- 13 ((exercise\* or fitness) adj3 (treatment or intervent\* or program\*)).tw.
- 14 exp Rehabilitation/
- 15 kinesiotherap\*.tw.
- 16 "Physical Education and Training"/
- 17 Patient Education as Topic/
- 18 (patient\* adj5 educat\*).tw.
- 19 ((lifestyle or life-style) adj5 (interven\* or program\* or treatment\*)).tw.
- 20 Self Care/
- 21 (self adj5 (manag\* or care or motivate\*)).tw.
- 22 exp Psychotherapy/
- 23 psychotherap\*.tw.
- 24 (psycholog\* adj5 intervent\*).tw.
- 25 Counseling/
- 26 (counselling or counseling).tw.
- 27 ((behavior\* or behaviour\*) adj5 (modify or modificat\* or therap\* or change)).tw.
- 28 (psycho-educat\* or psychoeducat\*).tw.
- 29 (motivat\* adj5 (intervention or interv\*)).tw.
- 30 Health Education/
- 31 (health adj5 educat\*).tw.
- 32 (psychosocial or psycho-social).tw.
- 33 (cognitive adj2 behav\*).tw.



34 6 or 7 or 8 or 9 or 10 or 11 or 12 or 13 or 14 or 15 or 16 or 17 or 18 or 19 or 20 or 21 or 22 or 23 or 24 or 25 or 26 or 27 or 28  
 or 29 or 30 or 31 or 32 or 33  
 35 randomized controlled trial.pt.  
 36 controlled clinical trial.pt.  
 37 randomized.ab.  
 38 placebo.ab.  
 39 drug therapy.fs.  
 40 randomly.ab.  
 41 trial.ab.  
 42 groups.ab.  
 43 35 or 36 or 37 or 38 or 39 or 40 or 41 or 42  
 44 exp animals/ not humans.sh.  
 45 43 not 44  
 46 5 and 34 and 45

**Embase**

1. angina pectoris/ or stable angina pectoris/  
 2. angina.tw.  
 3. stenocardia\*.tw.  
 4. angor pectoris.tw.  
 5. 1 or 2 or 3 or 4  
 6. exp kinesiotherapy/  
 7. sport/  
 8. exp exercise/  
 9. rehabilitat\*.tw.  
 10. (physical\* adj5 (fit\* or train\* or therap\* or activit\*)).tw.  
 11. (train\* adj5 (strength\* or aerobic\* or exercise\*)).tw.  
 12. ((exercise\* or fitness) adj3 (treatment or intervent\* or program\*)).tw.  
 13. kinesiotherap\*.tw.  
 14. exp rehabilitation/  
 15. physical education/  
 16. patient education/  
 17. (patient\* adj5 educat\*).tw.  
 18. ((lifestyle or life-style) adj5 (interven\* or program\* or treatment\*)).tw.  
 19. self care/  
 20. (self adj5 (manag\* or care or motivate\*)).tw.  
 21. exp psychotherapy/  
 22. psychotherap\*.tw.  
 23. (psycholog\* adj5 intervent\*).tw.  
 24. counseling/  
 25. (counselling or counseling).tw.  
 26. ((behavior\* or behaviour\*) adj5 (modify or modificat\* or therap\* or change)).tw.  
 27. (psycho-educat\* or psychoeducat\*).tw.  
 28. (motivat\* adj5 (intervention or interv\*)).tw.  
 29. health education/  
 30. (health adj5 educat\*).tw.  
 31. (psychosocial or psycho-social).tw.  
 32. (cognitive adj2 behav\*).tw.  
 33. 6 or 7 or 8 or 9 or 10 or 11 or 12 or 13 or 14 or 15 or 16 or 17 or 18 or 19 or 20 or 21 or 22 or 23 or 24 or 25 or 26 or 27 or 28  
 or 29 or 30 or 31 or 32  
 34. random\$.tw.  
 35. factorial\$.tw.  
 36. crossover\$.tw.  
 37. cross over\$.tw.

- 38. cross-over\$.tw.
- 39. placebo\$.tw.
- 40. (doubl\$ adj blind\$).tw.
- 41. (singl\$ adj blind\$).tw.
- 42. assign\$.tw.
- 43. allocat\$.tw.
- 44. volunteer\$.tw.
- 45. crossover procedure/
- 46. double blind procedure/
- 47. randomized controlled trial/
- 48. single blind procedure/
- 49. 34 or 35 or 36 or 37 or 38 or 39 or 40 or 41 or 42 or 43 or 44 or 45 or 46 or 47 or 48
- 50. (animal/ or nonhuman/) not human/
- 51. 49 not 50
- 52. 5 and 33 and 51

#### **CINAHL**

- S46 S5 AND S33 AND S45
- S45 S34 OR S35 OR S36 OR S37 OR S38 OR S39 OR S40 OR S41 OR S42 OR S43 OR S44
- S44 TX allocat\* random\*
- S43 (MH "Quantitative Studies")
- S42 (MH "Placebos")
- S41 TX placebo\*
- S40 TX random\* allocat\*
- S39 (MH "Random Assignment")
- S38 TX randomi\* control\* trial\*
- S37 TX ( (singl\* n1 blind\*) or (singl\* n1 mask\*) ) or TX ( (doubl\* n1 blind\*) or (doubl\* n1 mask\*) ) or TX ( (tripl\* n1 blind\*) or (tripl\* n1 mask\*) ) or TX ( (trebl\* n1 blind\*) or (trebl\* n1 mask\*) )
- S36 TX clinic\* n1 trial\*
- S35 PT Clinical trial
- S34 (MH "Clinical Trials+")
- S33 S6 OR S7 OR S8 OR S9 OR S10 OR S11 OR S12 OR S13 OR S14 OR S15 OR S16 OR S17 OR S18 OR S19 OR S20 OR S21 OR S22 OR S23 OR S24 OR S25 OR S26 OR S27 OR S28 OR S29 OR S30 OR S31 OR S32
- S32 TX (cognitive n2 behav\*)
- S31 TX (psychosocial or psycho-social)
- S30 TX (health n5 educat\*)
- S29 (MH "Health Education")
- S28 TX (motivat\* n5 (intervention or interv\*))
- S27 TX (psycho-educat\* or psychoeducat\*)
- S26 TX ((behavior\* or behaviour\*) n5 (modify or modificat\* or therap\* or change))
- S25 TX (counselling or counseling)
- S24 (MH "Counseling")
- S23 TX (psycholog\* n5 intervent\*)
- S22 TX psychotherap\*
- S21 (MH "Psychotherapy+")
- S20 TX (self n5 (manag\* or care or motivate\*))
- S19 (MH "Self Care")
- S18 TX ((lifestyle or life-style) n5 (interven\* or program\* or treatment\*))
- S17 TX (patient\* n5 educat\*)
- S16 (MH "Patient Education")
- S15 (MH "Physical Education and Training")
- S14 TX kinesiotherap\*
- S13 TX rehabilitat\*
- S12 (MH "Rehabilitation+")

S11 TX ((exercise\* or fitness) n3 (treatment or intervent\* or program\*))  
 S10 TX (train\* n5 (strength\* or aerobic\* or exercise\*))  
 S9 TX (physical\* n5 (fit\* or train\* or therap\* or activit\*))  
 S8 (MH "Exercise+")  
 S7 (MH "Sports")  
 S6 (MH "Therapeutic Exercise+")  
 S5 S1 OR S2 OR S3 OR S4  
 S4 TX angor pectoris  
 S3 TX stenocardia\*  
 S2 TX angina  
 S1 (MH "Angina Pectoris") OR (MH "Angina, Unstable")

### **CPCI-S**

#47 AND #46 AND #4  
 # 47 TS=(random\* or blind\* or allocat\* or assign\* or trial\* or placebo\* or crossover\* or cross-over\*)  
 # 46 #45 OR #44 OR #43 OR #42 OR #41 OR #40 OR #39 OR #38 OR #37 OR #36 OR #35 OR #34 OR #33 OR #32 OR #31  
 OR #30 OR #29 OR #28 OR #27 OR #26 OR #25 OR #24 OR #23 OR #22 OR #21 OR #20 OR #19 OR #18 OR #17 OR #16  
 OR #15 OR #14 OR #13 OR #12 OR #11 OR #10 OR #9 OR #8 OR #7 OR #6 OR #5  
 # 45 TS=(cognitive NEAR/2 behav\*)  
 # 44 TS=(psychosocial or psycho-social)  
 # 43 TS=(health NEAR/5 educat\*)  
 # 42 TS=(motivat\* NEAR/5 interv\*)  
 # 41 TS=(psycho-educat\* or psychoeducat\*)  
 # 40 TS=(behaviour\* NEAR/5 change)  
 # 39 TS=(behaviour\* NEAR/5 therap\*)  
 # 38 TS=(behaviour\* NEAR/5 modificat\*)  
 # 37 TS=(behaviour\* NEAR/5 modify)  
 # 36 TS=(behavior\* NEAR/5 change)  
 # 35 TS=(behavior\* NEAR/5 therap\*)  
 # 34 TS=(behavior\* NEAR/5 modificat\*)  
 # 33 TS=(behavior\* NEAR/5 modify)  
 # 32 TS=(counselling or counseling)  
 # 31 TS=(psycholog\* NEAR/5 intervent\*)  
 # 30 TS=psychotherap\*  
 # 29 TS=(self NEAR/5 motivate\*)  
 # 28 TS=(self NEAR/5 care)  
 # 27 TS=(self NEAR/5 manag\*)  
 # 26 TS=(life-style NEAR/5 treatment\*)  
 # 25 TS=(life-style NEAR/5 program\*)  
 # 24 TS=(life-style NEAR/5 interven\*)  
 # 23 TS=(lifestyle NEAR/5 treatment\*)  
 # 22 TS=(lifestyle NEAR/5 program\*)  
 # 21 TS=(lifestyle NEAR/5 interven\*)  
 # 20 TS=(patient\* NEAR/5 educat\*)  
 # 19 TS=kinesiotherap\*  
 # 18 TS=(fitness NEAR/3 program\*)  
 # 17 TS=(fitness NEAR/3 intervent\*)  
 # 16 TS=(fitness NEAR/3 treatment)  
 # 15 TS=(exercise\* NEAR/3 program\*)  
 # 14 TS=(exercise\* NEAR/3 intervent\*)  
 # 13 TS=(exercise\* NEAR/3 treatment)  
 # 12 TS=(train\* NEAR/5 exercise\*)  
 # 11 TS=(train\* NEAR/5 aerobic\*)  
 # 10 TS=(train\* NEAR/5 strength\*)

# 9 TS=(physical\* NEAR/5 activit\*)  
# 8 TS=(physical\* NEAR/5 therap\*)  
# 7 TS=(physical\* NEAR/5 train\* )  
# 6 TS=(physical\* NEAR/5 fit\*)  
# 5 TS=rehabilitat\*  
# 4 #3 OR #2 OR #1  
# 3 TS=angor pectoris  
# 2 TS=stenocardia\*  
# 1 TS=angina

#### **WHO's ICTRP**

"Cardiac rehabilitation"  
rehabilitation AND "angina"  
exercise AND "angina"

#### **Clinicaltrials.gov**

"Cardiac rehabilitation"  
rehabilitation AND angina  
exercise AND angina

## **CONTRIBUTIONS OF AUTHORS**

LL contributed to writing the protocol, undertook the 'Risk of bias' assessment, conducted the GRADE analysis and led the writing of the final review manuscript.

LA led writing of the protocol, undertook study selection and data extraction and contributed to writing the final review manuscript.

AD contributed to writing the protocol and manuscript, undertook study selection, data extraction and 'Risk of bias' assessment, and approved the final review manuscript.

JH provided clinical expertise, assisted in writing the protocol, undertook study selection, data extraction and 'Risk of bias' assessment.

MG contributed to writing the protocol and provided clinical expertise.

RST led the statistical analysis, conducted the GRADE analysis, edited the review and contributed to writing the final review manuscript.

All authors approved the final review.

## **DECLARATIONS OF INTEREST**

LL declares she has no conflicts of interest.

AD declares she has no conflicts of interest.

JH declares he has no conflicts of interest.

LA is an author on a number of other Cochrane reviews on cardiac rehabilitation (CR).

MG declares she has no conflicts of interest.

RST is an author on a number of other Cochrane reviews on CR and is currently the co-chief investigator on the programme of research with the overarching aims of developing and evaluating a home-based CR intervention for people with heart failure and their carers (NIHR PGfAR RP-PG-0611-12004).

## **SOURCES OF SUPPORT**

### **Internal sources**

- University of Exeter Medical School, UK.

### **External sources**

- The Cochrane Heart Group US Satellite is supported by intramural support from the Northwestern University Feinberg School of Medicine and the Northwestern University Clinical and Translational Science (NUCATS) Institute (UL1TR000150), USA.
- This project was supported by the National Institute for Health Research, via Cochrane Incentive funding to the Heart Group. The views and opinions expressed therein are those of the authors and do not necessarily reflect those of the Systematic Reviews Programme, NIHR, NHS or the Department of Health, UK.

## **DIFFERENCES BETWEEN PROTOCOL AND REVIEW**

In addition to the outcomes stated in the protocol, we took the decision to extract data for one additional outcome measure, adverse events associated with exercise, as we decided that this is an outcome important to patients.