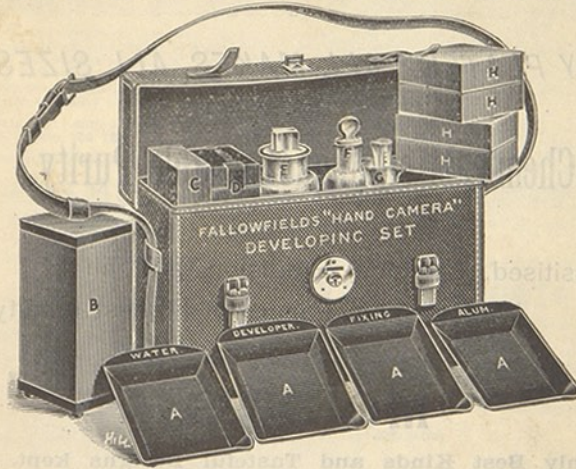


BD029832_001

Book: The Amateur Photographer's annual 1892
Copyright 2009 University of Exeter, all rights reserved.

Quite New.

FALLOWFIELD'S
New "Hand Camera"
DEVELOPING SET.



THIS Set has been specially designed with the view of keeping one's Developing Tackle altogether, and ready to be taken away at any moment. It is handsomely got up in mail cloth rigid case, lined green baize, fitted with lock and key, and shoulder straps.

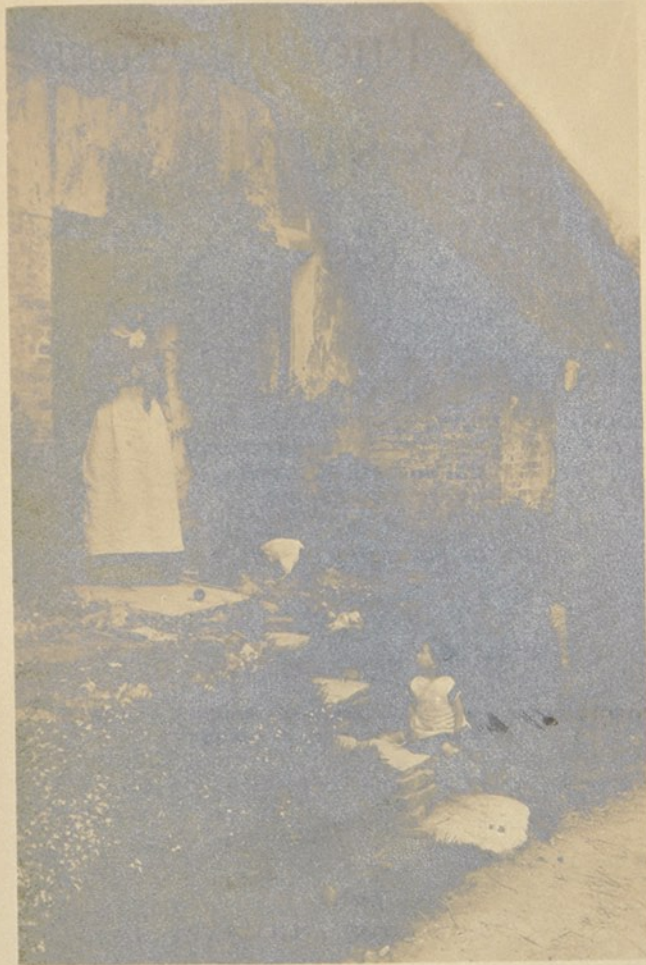
CONTENTS:

- | | |
|--|--|
| <i>A</i> 4 Trays for Developing, Fixing, Alum, and Water, with tipples at head of each Tray. | <i>E</i> Hyposulphite of Soda. |
| <i>B</i> Lamp (folding). | <i>F</i> 1 Solution of Hydroquinone Developer. |
| <i>C</i> Box to hold Lamp when closed and not in use. | <i>G</i> Dropping Bottle. |
| <i>D</i> Tin to hold Alum. | <i>H</i> 4 dozen $\frac{1}{4}$ Ilford Plates, and 2 oz. Graduated Measure. |

All made so as to pack away complete, price £2 2s.

This is really striking value, and a desirable addition to the Touring Amateur's Kit.

a



A DORSET COTTAGE,
PRINTED ON
EASTMAN'S Extra Rapid Bromide Paper.
Neg. by J. H. H. W.

217
AMA

1891 100

2M

PRINTED

A SUMMA
A CO

.00

ILLUSTR

BD029832_009_2

Book: The Amateur Photographer's annual 1892
Copyright 2009 University of Exeter, all rights reserved.

THE
AMATEUR PHOTOGRAPHER'S
ANNUAL

1892

CONTAINING

*A SUMMARY OF PHOTOGRAPHIC SCIENCE, PRACTICAL ARTICLES
A COMPREHENSIVE AND ILLUSTRATED HOLIDAY GUIDE
TO THE LEADING PHOTOGRAPHIC HAUNTS
IN THE EMPIRE,*

AND

A NOTICE OF NOVELTIES IN APPARATUS, ETC.

ILLUSTRATED BY ONE BROMIDE PRINT, ONE SILVER PRINT, FIVE COLLOTYPES, AND
NUMEROUS PROCESS BLOCK ILLUSTRATIONS

London

HAZELL, WATSON, AND VINEY, LD.

Office of the "Amateur Photographer"

1, CREED LANE, E.C.

1892

BD029832_010

Book: The Amateur Photographer's annual 1892
Copyright 2009 University of Exeter, all rights reserved.

PRIZE

Liverpool International
Exhibition, 1886.

MEDALS.

Photographic Exhibition,
1888.Lanternists by Special Appointment to the Liverpool 1891
Photographic Exhibition at the Walker Art Gallery.

ARCHER & SONS' IMPROVED OPTICAL MAGIC LANTERNS,

TWO PRIZE MEDALS AWARDED,

BOTH OIL AND LIMELIGHT,

Have proved by public competition to be superior to all others.

See Reports in the *British Journal of Photography*.

Used at the Walker Art Gallery Photographic Exhibitions (1888 and 1891) with such unprecedented success: "Sunlight" Soap Works; New Gladstone Hall; Liverpool Photographic Association; Liverpool Seamen's Friend Society; Liverpool Agent Society for Promoting Christian Knowledge; many Temperance Societies, &c.

THE "IDEAL" LANTERN.

THE Lantern of the Future.

See Enthusiastic Testimonials from Paul Lange,
Esq., F. Anyon, Esq., G. E. Thompson, Esq.,
The Manchester Camera Club, etc.Our New Patent "IDEAL" Dissolver for
Single Lanterns, Price 25/-

Improved Blow-thro' Safety Jet, 16/-

THE "PHOTINUS" (Registered), the most
powerful Oil Lantern in the world,
Price £4 4/-

FULL-SIZED LANTERNS FROM £1 1s. TO £100.

Illustrated Price Lists, many Novelties, post free, One Stamp.

DISSOLVING VIEWS & SLIDES OF EVERY DESCRIPTION.

Made to Order by our own Artists.

*Maps, Drawings, etc., Copied for Lantern Slides in superior style.*One of the **Finest and Largest Stocks of Slides in the King-**
dom at most reasonable prices.

Pure Oxygen Gas Compressed in Steel Cylinders.

ARCHER & SONS,

LANTERN SPECIALISTS AND MANUFACTURERS,

43 to 49, LORD ST., LIVERPOOL.

ESTABLISHED 1848.

Makers of the New Extraordinary Lantern for the "Sunlight" Soap Works.
Dark-room for trying Lanterns on the premises. Workshops on the premises.

☛ "THE IDEAL" THE LANTERN OF THE FUTURE—

[See pages end of reading matter,

HOLIDAY GUIDE FOR PHOTOGRAPHERS.

WITH LIST OF

DEALERS, DARK ROOMS,

AND

PHOTOGRAPHIC SOCIETIES.

[Note.—Dealers in Photographic Material, etc., have the letter D against their name, and Professional Photographers the letter P.]

ABERDARE (Glam.).—G. W. R., 200 miles. D. A. Lea, 18, Commercial Street.—J. L. Barry, 43, Cardiff Street. *Am. Phot. Soc.*—Sec., D. P. Davies, 17, Commercial Street.

ABERDEEN (Scotland).—G. N. R., 527½ miles (or by steamer from London, twice a week; fares, return, 45s. and 25s.). D. J. & J. Urquhart, 65, St. Nicholas Street, 3 minutes from station. This firm stocks all brands of plates, chemicals, and printing paper. *Dark Room* free from 8 a.m. to 10 p.m.—W. Reid, 100, Holborn Street, stocks chemicals, paper, and plates. *Dark Room* free at all times during the day.—James Henderson, 13, Crown Street. *Am. Phot. Soc.*—Sec., G. Brodie, 2, Pour's Terrace.

Aberdeen has been called the Granite City. Views of Union Street, Castle Street, and King Street should be secured, the Municipal Buildings, Marischal College, the Market Cross, and the Duke of Gordon's Monument, in Castle Street. Old Aberdeen, which is easily reached from the top of Market Street, is now a sequestered and antiquated village, with the remains of the Cathedral. The nave has been rebuilt in recent years, and is used as the parish church of Old Machar. The fine arched bridge which spans the Dee will make a good picture, and the Brig o' Balgownie, built either by Robert Bruce or Bishop Cheyne, should not be overlooked. When at Aberdeen the following places in the neighbourhood should be visited:—Cutter House, a 14th century mansion in the vicinity of Cutter Burn; Normandykes, once a Roman camp; Drum Castle (10 miles); Durris Tower; Crathes Castle; Tilwhille Castle; Banchory (17 miles). This is a charmingly picturesque village on the Dee. At the southern end of it is Scottie Hill, crowned with a monument. From this hill there is a splendid view. The Dee is a favourite hunting-ground for photographers, and the Feugh Water, which enters the river here, terminates its course in a picturesque cataract. Aboyne (32 miles). When here see Aboyne Castle, Glentanner, Mulloch Hill, Dee Castle. Ballater (43 miles) is on the north side of the Dee, and connected by coach with Castleton. Craigandarroch, and the Pass of Ballater, Muich Water, Dhu Loch, and Lochnagar should be visited. They will all provide splendid pictures. Balmoral Castle (the highland home of Queen Victoria). It is best to apply for official permission from the chief of the household before attempting to photograph. Cairn-a-Quheen, about a mile and a half from Crathie Church, has a curious legend told of it: "It was the custom for each man, when

Devil's Dyke, Rottingdean, Bramber Castle, Hollingbury Hill, the Downs, Preston Park, and Shoreham.

BRISTOL.—G. W. R., 119 miles. D. M. W. Dunscombe, 10, St. Augustine's Parade, stocks Thomas', England's, Paget, Mawson's, Fry's, Ilford, Edwards', and Elliott's plates, paper, chemicals, and apparatus. *Dark Room*—no charge; available from 8 a.m. to 7 p.m. 1 mile from the station; tram goes to the door for 1d.—Frank Holmes, 81, White Ladies' Road, Clifton, stocks Thomas' plates, paper, and chemicals. *Dark Room*—no charge for changing plates; developing, 1s. first hour, 6d. afterwards. Close to Clifton Down railway station.—Hy. Husbands, 8, St. Augustine's Parade, stocks Ilford, Wratten's, and Fry's plates, paper, chemicals, and apparatus. *Dark Room*—no charge for changing plates; available from 9 a.m. till 7 p.m. 15 minutes from railway station; tram passes the door, 1d.—B. N. Lobb, 114, Gloucester Road, Bishopston, stocks plates and paper, chemicals, etc. *Dark Room*—changing plates, 6d. a time, or 1s. an hour; developing, 1s. a time, or 1s. 6d. an hour; available from 8 a.m. to 8 p.m. Trams from Bristol pass the door. 4 minutes' walk from the Gloucester County Ground. Other *Dealers*—W. T. Whetter, Villiers Road, Stapleton; A. Salanson & Co., 28, High Street; L. Burge, 32, High Street; Hodder & Son, Ltd., 8, Broad Street; all stock plates, paper, chemicals, etc. *Camera Soc.*—Sec., T. Taylor Genge, 68, Berkeley Road, Bishopston. *Am. Phot. Assoc.*—Sec., F. Bligh Bond, 36, Corn Street, Bristol.

This busy city will afford ample work for the photographer. The Cathedral, with the Chapter House and Lady Chapel, will form several good pictures, whilst the interior has much to interest. The church of St. Mary Redcliffe, and many others are worth photographing. Good views of the river are to be got from the quay and bridges. Clifton will well repay a visit. The College and the church of All Saints should be seen.

BROADWAY (Worcester).—*Dark Room* at the "Lygon Arms" Hotel (Proprietor, C. R. Drury); six miles from Evesham (G. W. R., 106 miles); a conveyance every day at 2 p.m. The hotel itself is a very ancient building, and has a history dating from 1549. The Grange, near the village green, built somewhere about 1221, is in a fair state of preservation, and will interest the photographer. The Priors' Manse, the Kite's Nest, Middle Hill, Farncombe House, and the Church of St. Eadburga will all furnish excellent work for the camera.

BROMLEY (Kent).—S. E. R., 10 miles. D. Shillock & Son, 122, High Street, stock Ilford, Thomas', Marion's, and Edwards' plates in all sizes, paper, chemicals, and apparatus. *Dark Room*—no charge for changing plates; available from 8 a.m. to 8 p.m. Five minutes from S. E. R. and L. C. D. R. stations.

A fine old town with picturesque church, making a good picture from several points of view. In the churchyard are many interesting tombs, and to the collectors of epitaphs they will afford much instruction. The view from the recreation ground is very fine, and so are many on the outskirts of the town.

BURNLEY (Lancs.).—Mid. and G. N. R., 219 miles. D. B. Cowgill, 58, Manchester Road, and J. W. Wright, 141, St. James' Street; both stock plates, paper, chemicals, and apparatus. *Dark Room*—both firms have keys of the Photographic Society's rooms, Bank Chambers, Hargreaves Street. *Phot. Soc.*—Sec., Wm. Sutcliffe, 7, Bank Hall Terrace. *Dark Room*—no charge made,

BURSLEM (Staffs.).
35, Market Place
—no charge for
8 a.m. to 8 p.m.

This town is
was born here,
memorial to him;
near the old Ma
seek admission t

BURTON-ON-TRENT
48, Station Stre
plates, paper, a
has a *Dark Roo*

The large h
whole town bee

BURY (Lancs.).—G.
41, Princess Stro
Sec., Roger Woo

CALLANDER (Scot

F. John Furnie
Caledonian Ter

up a *Dark Roo*

Callander i
reached from Gl

any account of
turn the beautie

nature. Those
Callander their

CAMBORNE (Corn
Square, stocks
free of charge at

CAMBRIDGE.—G.
Hills Road,
Dark Room free

till 8 p.m. Ot
Morley & Co.,

E. Sanderson
Trinity Street;

"Blue Boar" H
Room; availab

Cowan, 62, Par
There is ne

Cambridge. Th
and quaint hou

modest 3-plate
Cam will provi

permission will
fall particulars.

CANTERBURY (K
D. J. Craik, 4,
Street, stock

Dark Rooms s
one mile from

2. [Can
as does W. H
ssed Cathedral,

Mrs. E. Graham Stone.

Loch Karyne.

in the kingdom
the top of Dane
the valley of the
ould be visited.

[Car]

Bossenden Woods, Boughton Le Beau, Nash Court, etc. To photograph in the Cathedral, permission must be obtained from the Dean. A correspondent in the *Amateur Photographer* says: "I gave a quarter of an hour for the choir and ten minutes for the nave, using a slow film, with lens working at $f/32$."

CARDIFF (S. Wales).—G. W. R., 170 miles. D. Jesse Williams & Co., 3 and 4, Park Hall Buildings. *Dark Room*—no charge to customers for changing plates, non-purchasers, $3d.$; developing free to customers, non-purchasers, $6d.$ per half-hour; weekly ticket, $3s. 6d.$ Stock plates, all photographic chemicals, Eastman's, Ilford, Durand, and Spicer's paper. *Dark Room*—available from 9 a.m. till 8 p.m. Other *Dealers* are—R. W. Duck & Co., St. John's Square, and W. L. Hicks & Co., Ltd., 28, Duke Street; both stock plates, paper, chemicals, and apparatus. *Phot. Soc.*—Sec., G. H. Bedford, 127, Bute Road.

The town, docks, and shipping, will afford interesting work for the camera. A visit should be made to Cardiff Castle, the noble residence of the Marquis of Bute; permission must be obtained of the Marquis's steward. A short distance, and a pleasant walk across the meadows is the little city of Llandaff, with its many quaint buildings, fine cathedral, and the bridge over the river Taff. The Secretary of the photographic society will most willingly give information.

CARDIGAN (Wales).—G. W. R., 275 miles. D. C. E. Evans stocks plates and paper.

The scenery on the banks of the river Teifi is exceedingly beautiful, and pictures may be composed on every side. Cardigan Castle, the village of St. Dogmaels, and the ruins of the Priory should be seen. Boat may be taken from Cardigan up the river to the ruins of Cilgerran Castle. Good fishing, which is so often an attraction for an off-day to the men of the camera, will be found.

CARLISLE (Cumberland).—L. N. W., and Mid. R., 300 miles. D. J. Robson, 26, Scotch Street, stocks plates, paper, chemicals, and apparatus, and has a *Dark Room* available. Other *Dealers* are—Hall Read, Denton Street, and J. Bell & Son, Central Place, Gilsland. *Am. Phot. Soc.*—Sec., J. S. Atkinson, 55, South Pettrill Street, Carlisle.

The city is a most desirable centre; the cathedral and castle will give some good work, and the most delightful scenery is to be found on the rivers Eden and Esk. A trip should be paid to Netherby Hall, the scene of the carrying off of Helen by Young Lochinvar, described in "Marmion."

CARNARVON (Wales).—L. N. W. R. 248 miles. D. J. C. Rowland, 17, Castle Street, and D. Jones, Bangor Street, stock plates, paper, and chemicals. *Dark Room*.—Joseph Kinsley, North Road; small charge made; plates and chemicals kept in stock; available any time in the day.

The castle will attract attention; it is in a splendid state of preservation, and is one of the finest fortresses in the kingdom. The position is really grand; it overlooks the Menai Straits and the Anglesea coast; it composes well with the shipping. The harbour is always busy. The most beautiful scenery in North Wales is within easy distance. Llanberis, Snowdon, the village of Beddgelert, etc., from Bangor, which lies north of Carnarvon; a trip should be made to Penrhyn Castle, and Aber Fall.

DOVER (Kent).—L. C. D. and S. E. R., 78 and 77 miles. P. J. G. Whirwell, 7, Beach Street, stocks Ilford, Phoenix, and Paget plates, paper, and chemicals. *Dark Room*—changing plates, 6d.; developing by arrangement; available from 8.30 a.m. to 8 p.m.; in centre of town, one minute from market or sea. D. W. Wyles, 1, New Bridge, stocks Ilford, Edwards', and Thomas' plates, paper, and chemicals. *Dark Room*—no charge for changing plates; developing, lowest charge, 6d.; available from 10 a.m. to 6 p.m. *Dark Room*—P. M. Jacolette, Northbrook House, has a room available. *Am. Phot. Soc.*—Sec., W. Wyles, New Bridge Street.

A contributor to the *Amateur Photographer* sends the following notes:—"The Admiralty Pier will undoubtedly be taken first, and the view of this pier from Shakespeare's Cliff is exceedingly beautiful; and another from Dover Castle will doubtless be taken. I should advise the amateur to get a view of the *Calais-Douvres* and *Invicta* just before being made fast to the pier, and this will be found to well repay the amateur photographer for his trouble. A good view of Dover can be taken from the end of the Admiralty pier. *Dover Castle*.—Two or three plates will be exposed here, I have no doubt; and if the photographer thinks it worth while, he can get permission to photograph within the courtyard. Close to is 'Pharos Castle.' This makes a good picture from the south. The tower is, I believe, some 1200 years old. *Granville Harbour*.—From fifty to one hundred vessels are generally at 'anchor,' and will make a splendid picture. Shakespeare's Cliff, Highcliffe Fort, the Barracks, the Garrison Chapel, and Snargate Street (the principal street in Dover), from the Square, should be taken. *St. Radigund's Abbey*, approached through Kearsney, is a long walk. The Abbey is almost completely covered with ivy, and is in ruins. The sands, any day about three o'clock, will afford many studies. Towards the South Foreland are fishermen's cottages. The Smugglers' Cave should be 'taken.' Views can be obtained here of active life without being in the least interfered with. St. Margaret's Bay, from three positions, will make splendid pictures. The Bay is about three miles, in a northerly direction along the sands, from Dover."

DROITWICH (Worcester).—G. W. R., 126 miles. D. E. E. Garlick, stocks plates, paper, and chemicals.

This place is famous for brine baths, and is in the very centre of the salt district. Some very serious subsidences have of late years taken place. The scenery of the surrounding district is very beautiful. The village of Ombersley, the lovely valley of the Severn, Shrawley Woods, Abberley, and Stourport will all provide good work for the photographer. Worcester, Great Malvern, and Kidderminster are within quite easy reach.

DUBLIN.—L. N. W. R., 335 miles. D. J. Robinson & Sons, 65, Grafton Street, stock all best brands of plates, paper, chemicals, and apparatus. *Dark Room*—no charge for use of; available from 10 a.m. till 7 p.m., except Saturday, then to be 3.30 p.m. D. T. Mayne, 10, Lord Edward Street, stocks nearly all makes of plates, paper, chemicals, and apparatus. *Dark Room*—no charge for changing plates; small charge for developing; available from 9 a.m. till 6 p.m. D. W. Hayes & Son, 12, Grafton Street, stock plates, paper, and chemicals. *Dark Room* at the Wicklow Hotel (Proprietor, R. O'Brien), available any time. *Phot. Soc. of Ireland*.—Sec., J. H. Hargreave, B.A., 3, Newtownsmith, Kingstown. *Y. M. C. A. Camera Club*.—Sec., L. Davidson, 32, Manor Street.

Mr. Gre the *Amateur* England, the Custom Hou as seen by of Venice. teresting int Botanic Gar tains fine gro pretty views excursion m abounds wit



of fisher life tourist shou is the lovely the right bar is far the b under-expos and worth p card must b five miles, to seen. The Close to E Knocksink, verses the fantastic co Take the tr

P. J. G. Whitwell, plates, paper, and developing by arrangement of town, one minute edge, stocks Ilford, s. *Dark Room*—no charge, 6d.; available at Colette, Northbrook &c., W. Wyles, New

sends the following taken first, and the exceedingly beautiful; be taken. I should *Doveres* and *Inwicks* will be found to well e. A good view of miralty pier. *Dover* re, I have no doubt; e can get permission is 'Pharos Castle' tower is, I believe, m fifty to one hundred e a splendid picture. s, the Garrison Chapel, er), from the Square, hed through Kearsney, tely covered with iris, ee o'clock, will afford re fishermen's cottages. s can be obtained here d with. St. Margaret's pictures. The Bay is the sands, from Dover. es. D. E. E. Garlick

nd is in the very centre ences have of late years district is very beautiful of the Severn, Shrawley vide good work for the and Kidderminster are

on & Sons, 65, Graham chemicals, and apparatus e from 10 a.m. till 7 p.m. Mayne, 10, Lord Edward paper, chemicals, and oping plates; small charge 6 p.m. D. W. Hayes & er, and chemicals. *Dover* R. O'Brien), available at Hargreave, B.A., 3, New Club.—Sec., L. Davison

Mr. Greenwood Pim, M.A., a resident in Dublin, writes of it in the *Amateur Photographer*:—"As regards the city itself, the Bank of England, the former Parliament House, Trinity College, and the Custom House should be photographed (morning light). The latter, as seen by evening light from Carlisle Bridge, is strongly suggestive of Venice. St. Patrick's and Christchurch Cathedrals will afford interesting interiors; permission will be granted by the Dean. The Botanic Gardens, Glasnevin, are picturesque, and the palm-house contains fine groups of tropical foliage, best from the gallery. One or two pretty views can also be had in the vicinity of the lake. A pleasant excursion may be made to Leixlip and the Salmon Leap. Howth abounds with bold rocky cliff scenery. In the herring season studies



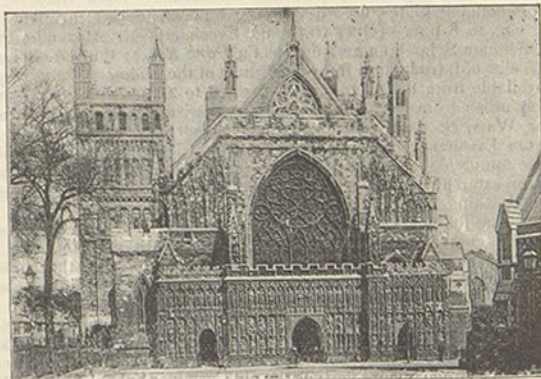
GOING TO THE FAIR—DUBLIN.

[John White.

of fisher life, boats, etc., can be secured about the little harbour. The tourist should not omit a walk round Bray Head. Three miles inland is the lovely Dargle Glen. Both sides are accessible. The road on the right bank has the best view for the general traveller, but the left is far the best for the photographer. Care should be taken not to under-expose, as the light is deceptive. Enniskerry is a pretty village, and worth photographing. To visit Powerscourt demesne admission card must be obtained of the agent at Enniskerry. The walk, some five miles, to the Waterfall, a fine cascade of about eighty feet, must be seen. The return should be made by road through the rocky valley. Close to Enniskerry Chapel opens another very pretty glen called Knocksink, a miniature Dargle. Two miles further on the road traverses the Scalp, a remarkable chasm, with huge rocks piled in fantastic confusion. This is best photographed in a morning light. Take the train as far as Rathnew, and drive thence through Madame

place you will come to is Chadbury, when you will find the first weir. You must get out here, and pull your boat over the grass plot into the river the other side, but before going on get a photograph of the flour mills, which form a very pretty picture; then turn your camera exactly the opposite way, and get one of the weir and lock gates. Then row on until you come to Fladbury, when you will come to the second weir; the church here is well worth a plate, having a fine Norman arch. Half a mile beyond is Croptorne, and there are many other delightfully quaint villages close to the banks of the river."

EXETER (Devon).—G. W. and L. S. W. R., 194 and 172 miles. D. J. Hinton Lake, 41, High Street, stocks Ilford, Edwards', Paget, and Thomas' plates, paper, and chemicals. *Dark Room*—no charge for changing or developing plates; available from 10 a.m. to 8 p.m.—D. E. Lemmon, 47, High Street, stocks plates, paper, and chemicals.



EXETER CATHEDRAL.

[J. S. Hawker.

Am. Phot. Soc.—Sec., Rev. J. Sparshott, Fairfield House, Alplinton Road.

There is much to be seen at Exeter; the Cathedral will give plenty of work; permission to photograph the interior is willingly accorded by the Dean. Northernhay Park will give some beautiful views; the ruins of Rougemont Castle, the Friars' Walk, a ramble along the banks of the Exe will all pay the photographer. In the city there are some very quaint houses, which it will be well to photograph, wherever possible, early in the morning. Exeter is a delightful city to stay at, as almost innumerable day excursions may be made—Teignmouth, Sidmouth, Starcross, Seaton and Beer, Exmouth, Dawlish, etc., etc. Some beautiful views of the cathedral may be secured from the banks of the Exe.

EXMOUTH (Devon).—L. S. W. R., 182 miles. D. A. H. Toone, stocks plates, paper, and chemicals.

Another excellent centre to work from; the town is quaint, and many good photographs obtainable, especially on the estuary of the Exe.

FAKENHAM (Norfo
Place, stocks pla
FALKIRK (Scotland
Roberts Wynd;

A guide to
town is the paris
John Graham an
in the battle of
works in Scotlan
FALMOUTH (Corn
Royal Hotel (P
hotel.

This town h
the midst of th
which is unequa
the parish churo
fishermen bring
harbour, always
On the headland
Mawes and Pen
Rock, and the
beaches, Gyllin
Steamers ply u
means of securi
From Falmouth.

FAVERSHAM (Kent
West Street, st
charge except f
a mile from Fav
chemicals, and a
Sec., P. Dan, 44

Mr. Percy
"Faversham" t
which much inte
graph. He div
that is to be see

FELIXSTOWE (Su
Victoria Parade
for changing pla
etc., supplied; a
Studio, has a D

This has be
give the usual
Landguard Fort
of the Orwell
remains of an
Manningtree, or
man.

FILEY (Yorks.)—G
stocks Ilford an
charge for chang
FINCHLEY (Middle
Terrace, stocks
Dark Room—n
ment; available

by steamer, up the river Garra to Cong should be made, passing Mellwell and Dangan Castle. Lough Corrib is soon entered, and for a distance of some fourteen miles the boat threads its way through a narrow channel, marked by cairns, till Cong is reached. Ashford, the seat of Lord Ardilaun, and the village are worth attention. The excursion may be continued by car to Clonbur, six miles; this picturesque village is two miles from Lough Mask; this lake will afford work for any length of time. The excursions may be extended *ad infinitum*; the whole district is a paradise for photographers.

GATESHEAD (Durham).—G. N. R., 273 miles. D. B. T. Ord, 182, Redheugh Street, stocks plates, paper, and chemicals. *Camera Club*—Sec., George R. Johnston, 1, Park Terrace.

GIANT'S CAUSEWAY (Ireland).—*Dark Room*—"Kane's" Royal Hotel (Proprietor, Francis Kane), Bushmills, has a dark room; no charge is made for the use of it.

Starting from Belfast it is well to proceed to Portrush, and there to stop the night, proceeding to the Causeway by electric tramway or coach; bearing rather to the left we have a good view of Portrush, and soon reach Ballymoney, and pass the White Rocks. Hereabouts, within a distance of less than two miles, there are upwards of twenty caves, the chief one being the Priests' Punch Bowl; on the left is seen Dunluce Castle, which will make several fine pictures. The tramway now runs close to the edge of the cliffs, and the town of Bushmills is reached; the views on the coast are superbly grand. The Causeway is about two miles; it will be necessary to engage a boat and guide, and as the camera will be in high request, it will be well to make a special arrangement, or the boat will be taken only to the regular show places. Dunkerry Cave, Dunseverick Castle, are the two extreme points. Portcoon Cave, Weirs Snoot, the Highlandman's Bonnet, and close to it the Giant's Well, must all be seen. The three Causeways form the grandest scenery—Little, Middle, and Grand; these are all seen from the boat. Upon landing to inspect them, the principal attractions are—the Keystone, Giant's Loom, and the Giant's Chair. Taking the boat again cross Portnoffer Bay and see the Giant's Organ, and out to sea is Gull Isle, Roveran Valley Head; and further to the westward, three pillars named the Giant's Chimney Tops; rounding Roveran Valley Head the Giant's Amphitheatre, which is admitted to be the grandest formation of all. The photographer should arrange to stay two or three days; he will be well repaid.

GLASGOW (Scotland).—L. N. W. and G. N. R., 402 miles. D. Albion Albumenising Co., 96, Bath Street, stock Ilford, Verel's, Thomas', Wratten's, Paget, Phoenix, and Edwards' plates, paper, chemicals, and all apparatus. *Dark Room*—no charge for changing plates or developing; available 9 a.m. till 6 p.m.—D. McGhie & Co., 75, Vincent Street, stock all makes of plates, paper, chemicals, and apparatus. *Dark Room*—no charge for changing plates; developing, according to size; available from 9 a.m. till 7 p.m.—D. George Mason & Co., 180 to 186, Sauchiehall Street, stock every photographic requisite. *Dark Room*—no charge, except for material used; available from 9 a.m. till 7 p.m.—D. James More & Co., 77, Renfield Street, stock all leading makes of plates, paper, chemicals, and apparatus. *Dark Room*—no charge for changing plates; developing, price of chemicals used; available from 10 a.m. to 6 p.m.; Saturdays till 2 p.m.—D. John Trotter, 24, Gordon Street, stocks all the best makes of plates, paper, and chemicals. *Dark Room*—free from 9 a.m. to 7 p.m.; Saturdays till 2 p.m.—Othe

Dealers with
J. Lizars, 16,
Stevenson &
available. *Ph*
Street. *Am*
Street, and J.
Street (five m
200 yards). *I*
from 7 a.m. till
lend them to
Amateur Phot
Glasgow is
place for seei
natural beauti
Glasgow in its
account of "G
Photographer
"In the city of
—notably the
intact the dest
the edifice ma
the valley to t
being the best
Square, shoul
steep hill cov
ments, surmo
Scotland's gre
Cathedral is s
reached by 'bu
situated in the
Abbey of Sco
Monument, ta
Post Office, t
lent pictures;
the square for
side is the R
taken from th
north-east cor
early morning
There are man
Park may be r
Park from Arg
view of the Ste
arch of Glasgo
start on their
general bright
memento. Th
the Custom H
bridge adjoining
of shipping, s
along the quay
vessels in cou
be esteemed b
city, which, o
subjects, and

nade, passing
ered, and for
s way through a
hed. Ashford,
attention. The
miles; this pic-
lake will afford
be extended ad
graphers.

B. T. Ord, 187,
als. *Camera Club*

ane's" Royal Hotel
room; no charge is

l to Portrush, and
ay by electric tram-
ave a good view of
the White Rocks
s, there are upwards
Punch Bowl; on the
several fine pictures
liffs, and the town of
superbly grand. The
to engage a boat and
t will be well to make
n only to the regular
e, are the two extreme
andman's Bonnet, and
The three Causeways
Grand; these are all
t them, the principal
and the Giant's Chair
and see the Giant's
ey Head; and further
iant's Chimney Tops,
amphitheatre, which a
he photographer should
well repaid.

402 miles. D. Allison
ford, Vere's, Thomas,
s, paper, chemicals, and
changing plates or de-
Ghie & Co., 75, Vincent
alls, and apparatus. *Dark*
pping, according to size,
lason & Co., 180 to 184,
e requisite. *Dark Room*
le from 9 a.m. till 7 p.m.—
ock all leading makes of
Dark Room—no charge for
als used; available from
John Trotter, 24, Gordon
s, paper, and chemicals
turdays till 2 p.m.—(Gla)

Dealers with Dark Rooms are:—Bolton & Sons, 47, West Mill Street; J. Lizars, 16, Glassford Street, and 260, Sauchiehall Street. P. J. Stevenson & Co., 109, Bothwell Street, also have a *Dark Room* available. *Phot. Assoc.*—Sec., Frederick Mackenzie, 122, Wellington Street. *Am. Phot. Assoc.*—Secs., William Goodwin, 3, Lynedoch Street, and J. C. Oliver, 247, Bath Street; *Rooms*—180, West Regent Street (five minutes from principal stations; trams pass within 200 yards). *Dark Room*—available, on application to the secretaries, from 7 a.m. till 10.30 p.m. (Dealers have keys and are authorised to lend them to any one having an introduction from the Editor of the *Amateur Photographer*.)

Glasgow is the centre of Scotland, and is, perhaps, even a better place for seeing Scotland than Edinburgh; although it has not the natural beauties. The trips on the Clyde make up for the fact that Glasgow in itself is by no means a picturesque city. The following account of "Glasgow and Neighbourhood," appeared in the *Amateur Photographer*, and gives in a condensed form much information:—
"In the city of Glasgow, there are many buildings worth photographing—notably the cathedral, the only one in Scotland which survived intact the destructive fury of the Reformation. Several fine views of the edifice may be taken, those from the bridge which leads across the valley to the Cemetery, and from the summit of the Cemetery Hill, being the best. A view of the cemetery taken from the Cathedral Square, should not be omitted; it makes a striking picture. The steep hill covered with dark foliage, and studded with white monuments, surmounted by the tall column and statue of John Knox, Scotland's great reformer, is full of beauty and interest. The Cathedral is situated at the extreme north of the city, and may be reached by bus from St. Enoch's Square, fare 2d. George Square, situated in the centre of the city (which may be called the Westminster Abbey of Scotland), will well repay an exposure or two; the Scott Monument, taken from the top of Hanover Street, and the General Post Office, taken from the foot of the Scott Monument, make excellent pictures; while the new municipal buildings on the east side of the square form an imposing pile. Adjoining the square on the west side is the Royal Exchange in Queen Street; a fine view may be taken from the steps of the British Linen Company's Bank, at the north-east corner of Ingram Street; it must, however, be taken in the early morning, as the traffic at this part is very dense during the day. There are many fine bits to be taken in the parks. The South Side Park may be reached by car from Jamaica Street, and the West End Park from Argyle Street; fare to either park 2d. An instantaneous view of the Steamboat Wharf at 7 a.m. should be taken from the second arch of Glasgow Bridge; the fine fleet of river steamers preparing to start on their day's sailing, the thousands of pleasure seekers and the general brightness of the whole scene, will form an interesting memento. The bridge itself should be taken from the quay opposite the Custom House, adjusting the camera so that the ugly railway bridge adjoining may not come into the picture. Instantaneous views of shipping, steamers, large Atlantic liners, etc., may be taken all along the quays; while a plate or two exposed on some of the large vessels in course of construction in the various shipbuilding yards will be esteemed by many. There are also many public buildings in the city, which, on account of their architectural beauty, form pleasing subjects, and are well worth taking. Glasgow to the Trossachs—

from Queen Street Station to Callander and Loch Katrine, back *via* Loch Lomond and Balloch; the whole line of route teeming with lovely bits, among which "Ellen's Isle," and the "Boathouse," on Loch Katrine, should not be omitted. Glasgow to Stirling, thirty miles. Stirling Castle may be taken from the "Lady's Rock" in the Cemetery, or from the valley below. The Martyr's Monument in the Cemetery, and the Bruce Statue on the Castle Esplanade, as well as the old ruin, called "Mar's Work," will well repay the trouble of exposure. From the Castle to the Wallace Monument on Abbey Craig, a walk of about two miles—the view from the monument is fine in the extreme; the windings of the Forth may be seen almost from its source to the sea, while away on the eastern horizon loom the huge forms of Arthur's Seat and Edinburgh Castle Rock. From the monument down to Cambuskenneth—do the ruins of the ancient Abbey, then back to Stirling, and take the bus for Bannockburn; take a view of the "Bore Stone," into a hole in which the standard of the Bruce was planted. Midway between Stirling and Bannockburn we pass the village of St. Ninian's; there is an old steeple standing in the churchyard, which may interest some from the fact that the church to which it was originally attached was blown up by the army of the brave but unfortunate Prince Charles Edward, on their way to the Highlands, after the retreat from Derby; but whether accidentally or otherwise is not known. The old steeple may, therefore, possess an interest for those who are acquainted with the story of the young Prince's brave but unsuccessful struggle to reclaim the crown of his fathers. Before leaving Stirling secure a view of the old bridge over the Forth, the 'Key of the Highlands,' as it was formerly called; it is best taken from the upper side, and in the evening."

GLENALMOND (Scotland).—G. N. R., 400 miles (nearest station, Methven, $4\frac{1}{2}$ miles). *Dark Room*—Mr. Arthur Reid, M.A., F.G.S., Trinity College, allows the use of dark room any time during public school terms. Glenalmond is ten miles from Perth, Crieff, and, by moors, Dunheld.

Methven Castle is within easy distance; the village is quaint. Near the Tay is Huntingtower Castle, the two towers of which are separated by about nine feet; it is called the Maiden's Leap. Mr. Reid will give every information about the district.

GLOSSOP (Derby).—G. N. R., 190 miles. D. A. P. Golden, 48, High Street, stocks plates, paper, and chemicals. *Phot. Soc.*—Sec., J. K. Hollingberry, Havard Street Chambers.

GLOUCESTER.—G. W. R., 115 miles. P. A. H. Pitcher, 58, Southgate Street, stocks plates, paper, and chemicals. *Dark Room*—no charge for changing plates; developing, by arrangement; available from 9 a.m. to 6 p.m. D. W. Walwin, Southgate Street, stocks Ilford, Edwards', Barnet, Thomas', Mawson's plates, paper, chemicals, apparatus, etc. *Dark Room*—changing plates, 6d.; free to customers; developing, from 6d., according to time and chemicals used; available all day. Other *Dealers* are E. G. Hughes, 86, Northgate Street, and R. C. Humfrey, 83, Barton Street. *Phot. Soc.*—Sec., F. H. Burr, 8, Midland Road.

The Cathedral will form the chief centre of work for the photographer, the exterior and interior are extremely beautiful; to photograph the latter, permission must be obtained from the Dean. There are many buildings worth a plate in the city, the Little Cloisters,

Prebendary's views can be obtained and Tintern and

GOOLE (Yorks.).—39, Aire Street

GORLESTON (N. Street and Pier Room—no charge

6, Pier Cliff, chemicals. D. of Great Yarm

Tower, Gorles GORING-ON-TH. Miss Benham,

dark room for Editor of the and five minut

The river specimen of churchyard, w

turesque mills Streatley, a ve

teur, will glad GOSPORT (Hant High Street,

chemicals, etc Gosport from the shore

size and rig; ships, gunboat of the harbor

excellent pict GRANTHAM (L plates, paper,

This tow Church, which fourteenth ce

Hotel. The day. An eas

Rutland's se subjects. GRAVESEND (

Room—Mr. C use of dark

Amateur P plates, paper Cobham.

There a Hall will for

Gravesend t photographs GREENOCK (S

19, Cathcart cals, and app

Is a bu

LECHLADE (Gloucester).—G. W. R., 87 miles. D. G. A. Davis stocks plates ($\frac{1}{8}$ and $\frac{1}{4}$), paper, and chemicals. *Dark Room*—no charge for changing plates; developing, 6d. an hour, without chemicals; available from 8 a.m. till 8 p.m.

At Lechlade the Thames, or, perhaps more properly, the Isis, is connected with the Severn by a canal. The scenery is picturesque, and the little town a favourite stopping place for boating men and anglers.

LEDBURY (Hereford).—G. W. R., 130 miles. D. V. W. Meacham, High Street, stocks plates and paper. *Dark Room* at the "Feathers" Hotel (Proprietor, Wm. Manton); no charge to those staying in the house.

The river Leden and the Hereford and Gloucester Canal will afford some beautiful work for the camera. The Malvern Hills will repay for a visit, and the village of Easton, with its castle and park. Ledbury is about fifteen miles from Hereford. The scenery the whole distance is most picturesque.

LEEDS (Yorks.).—G. N. and Mid. R., 187 and 196 miles. D. Pearson & Denham, 5, New Station Street, stock Barnet, Edwards', Ilford, Mawson's, Paget, Thomas', and Wratten's plates, paper, chemicals, and apparatus of every description. *Dark Room*—no charge for changing plates; developing, $\frac{1}{4}$ 1s., $\frac{1}{2}$ 2s., $\frac{1}{3}$ 3s. per doz. plates, developer supplied; available from 9 a.m. to 7 p.m. *Dark Room*—Mr. Geo. A. Saxton, 18, Meadow Road, Holbeck, allows the use of dark room on receipt of introduction from the Editor of the *Amateur Photographer*; available from 8 a.m. to 10 p.m.—D. Reynolds & Branson, 14, Commercial Street, stock all makes of plates, paper, chemicals, and apparatus. They have a *Dark Room* available.—D. C. C. Ververs, 12, Market Street, Briggate, stocks Fry's, Ilford, Paget, Thomas', and other plates, paper, chemicals, apparatus, and every requisite. *Dark Room*—free for changing plates; developing, 2s. per doz.; available from 9 a.m. till 6 p.m.—D. R. H. White, 18, Park Row, stocks all leading makes of plates, paper, chemicals, etc. *Dark Room*—free for changing plates; developing, developer used charged for; available from 9 a.m. to 7 p.m. *Phot. Soc.*—Sec., S. A. Warburton, 9, Banstead Terrace, Roundhay Road. *Phot. Club* (Y. M. C. A.).—Sec., F. W. Fisher, 9, Meanwood Terrace, Meanwood Road.

LEEK (Staffs.).—Mid. and L. N. W. R., 156 miles. D. Johnson & Sons, 5, Stanley Street, stock plates (up to $\frac{1}{4}$ size), paper (Schölzig's and Ilford), and chemicals. *Dark Room*—no charge for changing plates; developing, 6d. per hour or part of an hour; available from 9 a.m. to 9 p.m.

It is a pretty walk from Leek to Rudyard along the banks of the Canal Feeder. The Roaches and the Morridge Hills are seen, and at Rudyard there is a fine old abbey. A large sheet of water, some two miles long, which supplies the Trent and Mersey Canal, will give subjects for several photographs.

LEICESTER.—Mid. R., 100 miles. D. R. Broof, 104, Belgrave Gate, stocks Ilford plates, paper, and chemicals. *Dark Room*—no charge for use of; available from 9 a.m. till 7 p.m.—D. H. Pickering, High Cross Street, stocks all makes of plates, paper, chemicals, and apparatus. *Dark Room*—no charge for use of; available from 8 a.m. till 8 p.m. Other *Dealers* are—J. Young, 16, Gallowtree Gate, and S. Wand, 18, Haymarket, stock plates, paper, chemicals, etc. *Dark*

Rooms—Mr. T. P. foot, amateurs, all introduction from A. Newton, 19, B. Soc.—Sec., H. Pic

The following *Photographer* by pretty views to be ancient walls and will form a prom Castle Yard, from specimens of Norr tecture can be ha aisle, and windo tower; the Roma tains a beautiful piece, will well

Wolsey died, is v that through whic precincts of the posed here. Mr. building, and vis walking through take photographs petty of the Cor gardens, terraces public, and free

Horse-fair Street of the town. Th row of trees, and will find work fo more modern-bu grapher on his w about 2½ miles shady lanes, and Powys-Keck—is

are extensive, at of noble trees, Church of St. M but permission from Mr. Powys (one of the seat votaries of the the ruins of the principal part of introducing de There is a pt

Lingford. Wo placed among t the village is cottages in the of rare beauty such as will ch LEIGH (Lancs.).— plates, paper, a

Rooms—Mr. T. Porritt, 66, London Road, and Mr. Frank G. Pierpont, amateurs, allow the use of their dark rooms on receipt of an introduction from the Editor of the *Amateur Photographer*. v. A. Newton, 19, Belvoir Street, has a *Dark Room* available. *Phot. Soc.*—Sec., H. Pickering, High Cross Street.

The following short notes were contributed to the *Amateur Photographer* by Mr. T. Porritt:—"There are many interesting and pretty views to be had in and near the town. The Newarke, with its ancient walls and gateway, over which the spire of St. Mary's Church will form a prominent object in the picture, and the entrance to the Castle Yard, from Castle Street, make two charming views. Splendid specimens of Norman, Early English, and Perpendicular styles of architecture can be had. St. Mary's Church, with its Norman doorways, aisle, and windows; St. Nicholas' Church, with its herring-boned tower; the Roman walls; and the quaint old town-hall, which contains a beautiful specimen of an Early English carved-wood mantelpiece, will well repay a visit. Leicester Abbey, where Cardinal Wolsey died, is very interesting. The gateway in the eastern wall is that through which the Cardinal is supposed to have entered into the precincts of the Abbey. Several plates may be advantageously exposed here. Mr. Thomas Warner now resides in a portion of the building, and visitors are, by his kindness, allowed the privilege of walking through the beautiful garden and grounds. Permission to take photographs will be readily granted. The Abbey Park, the property of the Corporation, is good for artificial work, such as flower gardens, terraces, swans on the lakes, and rockery. It is open to the public, and free from any restrictions. The Municipal Buildings, in Horse-fair Street, with the lofty clock tower, form a prominent feature of the town. The New Walk, with upwards of half a mile of a double row of trees, and bounded on either side by neat houses and gardens, will find work for the camera. The London Road, with its villas and more modern-built mansions, will attract the attention of the photographer on his way to Evington and Stoughton, two adjoining villages, about 2½ miles from Leicester, famous for straw-thatched cottages, shady lanes, and rural scenery. Stoughton Grange—the seat of Mr. Powys-Keck—is a very fine modern building; the grounds and park are extensive, and laid out in excellent state. A magnificent avenue of noble trees, half a mile in length, leads from the Grange to the Church of St. Mary, one of the handsomest in the county of Leicester; but permission to enter the grounds and park will have to be obtained from Mr. Powys-Keck. Bradgate Park, about six miles from Leicester (one of the seats of Lady Stamford), is a most inviting place for the votaries of the camera. There are splendid specimens of trees, and the ruins of the hall where the ill-fated Lady Jane Grey spent the principal part of her short life. Many pleasing pictures may be got, introducing deer, waterfalls, running streams, shady walks, etc. There is a public road through the park, starting from Newton Lingford. Woodhouse, 3¼ miles from Barrow station, is picturesquely placed among the hills of Charnwood Forest, and though the centre of the village is homely, there are some charming nooks and ancient cottages in the neighbourhood, and delightful walks presenting glimpses of rare beauty from several breaks of the rocky, wood-crowned hills, such as will charm the heart of any photographer."

LEIGH (Lancs.).—L. N. W. R., 18½ miles. D. W. Hampson stocks plates, paper, and chemicals.

difficult to judge
of Barber's Hill



(G. F. Hightower.)

THE VIEW FROM LONDON.

miles from Langollen,
made over the hills to
es. The "Royal" and

LONDON.

The following list of dealers is compiled from various sources. In almost every case plates, paper, chemicals, and apparatus may be obtained.

Those having a *Dark Room* are marked with an asterisk. For convenience the list is divided into the Metropolitan Postal Districts.

LONDON, N.—

- *Chipper, W. G., 39, Highgate Road.
- Farrow, E. H., 474, Hornsey Road.
- *Feaks, F. P., 90, Newington Green Road (Photographer).
- *Hart, F. W., 96, Stoke Newington Road.
- *Hansell, J., 7, Archway Road.
- *Humphries, W. H., & Co., 268, Upper Street, Islington.
- *Lloyd, E. M., 71a, Highgate Road.
- Morley & Cooper, 70, Upper Street, Islington.
- *Penrose & Co., 5, Amwell Street.
- *Platt & Witte, Birkbeck Works, Birkbeck Road.
- *Scamell, E., 4, Albert Terrace, Church Road, Finchley.
- *Wynne, R. H., 106, Seven Sisters Road.

LONDON, N.E.—

- *Beckett, R., 6, The Grove, Hackney.
- Bridge, F. A., 55, Dalston Lane.
- *Hubert, J., 283, Mare Street, Hackney.

LONDON, N.W.—

- *Carter, G. H., 65, Torriano Avenue, Camden Road.
- Hodgkinson, G. A., 5, Chapel Street, Somers Town.
- Lambe, A. R., 245, High Road, Kilburn.
- Pettinger, E., 49, High Street, Hampstead.
- Newton, T., Carlton Road, Kilburn.
- Salmon, J., 169, Hampstead Road.

LONDON, E.—

- *Allen, J., 10, Barking Road, Canning Town.
- Barnes, W. R., The Terrace, Upton Manor.
- Riley & Son, 249, Commercial Road.
- Sharman, G., Mare Street, Hackney.

LONDON, E.C.—

- *Adams & Co., 81, Aldersgate Street.
- American Camera Co., Lim., 124, Old Broad Street.
- Amphlett, Humphries, & Co., 13, Edmund Place, Aldersgate Street.
- Barclay & Sons, Lim., 95, Farringdon Street.
- Beck, R. & J., 68, Cornhill.
- Civil Service Supply Association, Queen Victoria Street.
- City Sale and Exchange Rooms, 54, Lime Street.
- *Dollond & Co., 35, Ludgate Hill.
- Dollond & Co., 62, Old Broad Street.
- Doublet, T. & H., 11, Moorgate Street.
- *Elliott, C. E., 36, Jewin Street.
- Gandy, C. A., 47, Old Broad Street.
- *Harling, W. H., 47, Finsbury Pavement.
- *Hughes, H., & Son, 59, Fenchurch Street.
- Lawley, W., 78, Farringdon Street.
- Levi, Jos., & Co., 40, Furnival Street.
- Levi, S. J., & Co., 71, Farringdon Road.

- *London Stereoscopic Co., 54, Cheapside.
- *Martin, G. S., Bream's Buildings, Chancery Lane.
- *Mayfield & Co., 41, Queen Victoria Street.
- Negretti & Zambra, Holborn Viaduct.
- New Civil Service Stores, 122, Queen Victoria Street.
- Newton & Co., 1, Fleet Street.
- *North, W. D., 97, City Road.
- *Orme, J., & Co., 65, Barbican.
- Perken, Son, & Rayment, 90, Hatton Garden.
- *Piggott, J., 117, Cheapside.
- Price & Co., 26, Ludgate Hill (Stationers' Hall Court).
- St. Bride's Stores, 86, Fleet Street.
- Spiers & Pond, New Bridge Street.
- *Whittingham, W. B., & Co., 43, Charterhouse Square; 91, Gracechurch Street.
- Wood, E. G., 74, Cheapside.

LONDON, S.E. :-

- Atkinson, L., & Co., 285, Brockley Road; 193, Greenwich Road.
- *Baldock & Co., 3, High Street, South Norwood.
- Bell & Freke, 378, Coldharbour Lane.
- Blackfriars Photographic and Sensitising Co., 1, Surrey Row, Blackfriars Road.
- Bromwich, T., & Co., 69, New Road, Woolwich.
- Dale, G. E., Upper Sydenham.
- Hemery, Lindsay, Hanover Studios, Peckham.
- Herbert, H. R., 72, Arnott Road, East Dulwich.
- *Howell & Son, 83, High Street, Peckham.
- *Lockyer, J. E., 87, Evelyn Street, Deptford.
- *McCarthy, J., 879, Old Kent Road.
- *Medland, J. B., 53, Borough.
- Miles Bros., 314, Walworth Road.
- Moody & Catterns, 30, Church Street, Camberwell.
- Noakes, D., & Son, South London Works, Greenwich.
- Pidgeon, J. D., High Road, New Cross.
- *Prime, T. R., Upper Norwood.
- *Prosser, Roberts, & Co., 13, Church Street, Camberwell.
- Rice, E. A., 50, Werner Road, Camberwell.
- Robeson, C., 7, The Pavement, New Cross.
- Senior, H., & Co., 88, Norwood Road.
- Slater, W. F., 169, Southampton Street, Camberwell.
- *Stanley, W. F., 13, Railway Approach, London Bridge.
- Tylar, W., 48, Waterloo Road.
- *Wade, A. E., 188, Walworth Road.
- Williams, S., Forest Hill.

LONDON, S.W. :-

- *Army and Navy Auxiliary Stores, Francis Street, Pimlico.
- *Boal, A. H., 93, Harwood Road, Walham Green (Photographer).
- Bulbeck, J., 22, Sussex Street.
- Civil Service Co-operative Society, 28, Haymarket.
- *Clarke & Clarke, Clapham Junction.
- Glew, F. H., 156, Clapham Road.
- Harrod's Stores, Brompton Road.
- *Horton, Richard, 46, Royal Avenue, Chelsea (Amateur).
- *Jacolette, M., Queen's Gate Studio, Harrington Road (Photographer).

Junior Army and
Price & Wardle
Read, J. H., 11,
*Salmon, S. H. F.
Thomas, R. W.
Valentine, H., &
Watson Bros.,
*Webster Bros.,

LONDON, W. :-

American Came
Brumwell, C. V.
*Chilwell, J., 45
Crouch, Henry
*Eastman Co.,
*Emery, W., 24
*Faithful, R. E.,
*Fallowfield, Jo
*London Stereo
Marion & Co.,
Mawson & Sw
Robinson & S
Ross & Co., 1,
Rowley, J., 60
Shew, J. F., &
Werge, J., 116
*Whiteley, W.,

LONDON, W.C. :-

*Adams & Co.
Browning, Jo
Civil Service
*Fry Manufact
Griffin & Son
*Hinton & Co.
Horne & Tho
*Houghton &
Murray, R. C.
Oborne, E.,
Rouch & Co.
*Sands & Hu
Steward, J. I
*Watson & S
Wratten & V

LO

LONDON, N. :-

North Londo
Brownswo
North Midd
Holloway.

LONDON, N.E. :-

East Londo
Dalston.
Hackney Ph
Edward's

- Junior Army and Navy Stores, Waterloo Place.
 Price & Wardle, 290, Brixton Road.
 Read, J. H., 11, Buckingham Palace Road (Photographer).
 *Salmon, S. H. R., 10, The Terrace, East Putney (Photographer).
 Thomas, R. W., & Co., Limited, 10, Pall Mall.
 Valentine, H., & Co., 88, Brixton Road.
 Watson Bros., 4, Pall Mall.
 *Webster Bros., 25, The Pavement, Clapham Common.

LONDON, W. :—

- American Camera Co., Lim., 397 and 399, Edgware Road.
 Brumwell, C. W., 7, Lower Terrace, Notting Hill.
 *Chilwell, J., 452, Oxford Street.
 Crouch, Henry, Lim., 141, Oxford Street.
 *Eastman Co., 115, Oxford Street.
 *Emery, W., 24, South Street, Baker Street (Photographer).
 *Faithful, R. E., 3, Lower Terrace, Notting Hill.
 *Fallowfield, Jonathan, 26, Charing Cross Road.
 *London Stereoscopic Co., Lim., 106, Regent Street.
 Marion & Co., 23, Soho Square.
 Mawson & Swan, Soho Square.
 Robinson & Sons, 172, Regent Street.
 Ross & Co., 112, New Bond Street.
 Rowley, J., 60, Edgware Road.
 Shew, J. F., & Co., 88, Newman Street.
 Werge, J., 11a, Berners Street.
 *Whiteley, W., Westbourne Grove.

LONDON, W.C. :—

- *Adams & Co., 26, Charing Cross Road.
 Browning, John, 63, Strand.
 Civil Service Supply Association, Bedford Street, Strand.
 *Fry Manufacturing Co., 5, Chandos Street.
 Griffin & Son, 22, Garrick Street.
 *Hinton & Co., 38, Bedford Street, Strand.
 Horne & Thornthwaite, 416, Strand.
 *Houghton & Son, 85, High Holborn.
 Murray, R. C., 8, Garrick Street.
 Osborne, E., Red Lion Square.
 Rouch & Co., 180, Strand.
 *Sands & Hunter, 20, Cranbourn Street.
 Steward, J. H., 406, Strand.
 *Watson & Sons, 313, High Holborn.
 Wratten & Wainwright, 38, Great Queen Street, Long Acre.

LONDON PHOTOGRAPHIC SOCIETIES.

LONDON, N. :—

- North London Phot. Soc.*—Sec., G. J. Clarke, 52, Queen's Road, Brownswood Park.
North Middlesex Phot. Soc.—Sec., J. McIntosh, 14, Lowman Road, Holloway.

LONDON, N.E. :—

- East London Phot. Soc.*—Sec., M. A. Wilkinson, 21, Ferncliffe Road, Dalston.
Hackney Phot. Soc.—Sec., W. Fenton Jones, 6, Victoria Street, King Edward's Road, Hackney.

- LONDON, N.W.—
Hampstead Phot. Club—Sec., Bertram W. Wild, Gladesmore, Willesden Lane, Brondesbury.
- LONDON, E. :—
People's Palace Phot. Club—Sec., W. Barrett, 16, Clare Road, Forest Gate.
Toynbee Camera Club—Sec., Thomas W. Glave, 37, Brunner Road, Walthamstow.
- LONDON, E.C. :—
Finsbury Technical College (Phot. Soc.)—Sec., L. W. de Grave, 1, Amberley Road, West Hill, Sydenham, S.E.
London and Provincial Phot. Assoc.—Sec., R. P. Drage, 95, Blenheim Crescent, W.
Phot. Club—Sec., F. A. Bridge, East Lodge, Dalston Lane, E.
Postal Phot. Soc.—Sec., Walter Withall, 18, Bedford Row, W.C.
St. Bartholomew's Hospital Phot. Soc.—Sec., R. J. Hillier, St. Bartholomew's Hospital.
- LONDON, S.E. :—
Am. Phot. Field Club—Sec., B. G. Wilkinson, junr., 151, Bermondsey Street.
Blackheath Camera Club—Sec., T. B. Earle, The Cottage, Handen Road, Lee.
Brockley and St. John's Sci. Soc. (Phot. Soc.)—Sec., L. M. Biden, 20, Bucklersbury, E.C.
Crystal Palace District Camera Club—Sec., M. Cecil, 68, Beckenham Road, Peenge.
Forest Hill Sci. Micro. Soc. (Phot. Sec.)—Sec., J. L. M. Porter, 15, Wood Vale, Forest Hill.
Lewisham High Road Camera Club—Sec., B. Davidson, 62, Manor Road, Brockley.
North Surrey Phot. Soc.—Sec., Harold Senier, F.I.C., F.C.S., 88, Norwood Road.
South London Phot. Soc.—Sec., S. W. Gardner, 7, Barry Road, East Dulwich.
Sydenham Camera Club—Sec., H. H. Gray, 9, Thicket Road, Anerley, S.E.
- LONDON, S.W. :—
Albany Institute Am. Phot. Club—Sec., A. B. Gee, 280, Albany Road, Camberwell.
Am. Phot. Assoc.—Sec., A. J. Melhuish, 58, Pall Mall.
Brixton and Clapham Camera Club—Sec., F. W. Levett, 74, Geneva Road, Brixton.
Camberwell Camera Club—Sec., F. H. Atkins, 71, Paulet Road.
Putney Am. Phot. Soc.—Sec., C. Bullard, 45, Disraeli Road, Putney.
Richmond Camera Club—Sec., P. Ennis, 28, Halford Road, Richmond.
Science Schools, South Kensington (Phot. Sec.)—Sec., P. C. Coultas, Normal School of Science, South Kensington.
Tooting Am. Phot. Soc.—Sec., G. H. Dollery, "Glion," Lucien Road, Tooting Common.
West Surrey Phot. Soc.—Sec., F. H. Smith, 107, Falcon Road, Clapham Junction.

- LONDON, W. :—
Ealing Phot. Soc.
 Road, Ealing.
Harlesden and Walsden Phot. Soc.
 Road, Harlesden.
Lantern Soc.—Sec.,
 Piccadilly.
Polytechnic Phot. Soc.
 Fulham, S.W.
West London Phot. Soc.
- LONDON, W.C. :—
Camera Club—Sec.,
 Exeter Hall, Cannon Street.
Holborn Camera Club
 Barnsbury, N.
Photographic Soc.
 F.I.C., F.C.S.,
 Bayley, 50, Great
 University College
 Gower Street.

LONDON

- THE ROYAL PARKS.
 Hampton Court Park
 Richmond Park, a
 for six months, up
 Works, Whitehall
- PARKS, ETC., IN THE
 Embankment Gardens
 open spaces unde
 able till the end
 Council, Spring C
- KEW GARDENS.—Per
 Director, Kew Ga
- WINDSOR GREAT PA
 fourteen days, on
 Windsor Park.
- WANSTEAD PARK.—F
 hall, E.C.
- ST. PAUL'S CATHEDR
 upon application
- ZOOLOGICAL GARDENS
 must be made to
- SOUTH KENSINGTON
 BRITISH MUSEUM.—F
- CRYSTAL PALACE.—N
 Palace or the gro
 & Zambra.
- NATIONAL GALLERY.—
 the Director, to p

LONDON, W. :—

- Ealing Phot. Soc.*—Sec., F. W. Williams, The Chantry, Florence Road, Ealing.
Harlesden and Willesden Phot. Soc.—Sec., Isaac Cohen, 26, Wendover Road, Harlesden.
Lantern Soc.—Sec., Captain C. E. Gladstone, R.N., 6, Bolton Street, Piccadilly.
Polytechnic Phot. Soc.—Sec., Geo. J. Goose, 31, St. Maur Road, Fulham, S.W.
West London Phot. Soc.—Sec., H. Selby, 42, Ladbroke Grove Road, W.

LONDON, W.C.—

- Camera Club.*—Sec., George Davison, Charing Cross Road.
Exeter Hall Camera Club.—Sec., G. J. Ingram, 127, Manor Road, Clapham.
Holborn Camera Club.—Sec., Frederick J. Cobb, 3, Albion Grove, Barnsbury, N.
Photographic Society of Great Britain.—Hon. Sec., Chapman Jones, F.I.C., F.C.S., 11, Eaton Rise, Ealing, W.; Asst. Sec., R. Child Bayley, 50, Great Russell Street.
University College Phot. Soc.—Sec., J. Chorley, University College, Gower Street.

LONDON: PERMISSION TO PHOTOGRAPH.

- THE ROYAL PARKS.**—Bushey Park, Green Park, Greenwich Park, Hampton Court Palace and Gardens, Hyde Park, Kensington Gardens, Richmond Park, and St. James' Park. Permits are granted, available for six months, upon application to—*H. W. Primrose, H.M. Board of Works, Whitehall, S.W.*
- PARKS, ETC., IN THE CUSTODY OF THE COUNTY COUNCIL.**—Battersea Park, Embankment Gardens, Finsbury Park, Victoria Park, and all other open spaces under control of the Council. Permits are granted available till the end of each year, upon application to the *Clerk to the Council, Spring Gardens, S.W.*
- KEW GARDENS.**—Permit, available for one year, on application to the *Director, Kew Gardens, S.W.*
- WINDSOR GREAT PARK AND VIRGINIA WATER.**—Permit, available for fourteen days, on application to *Captain W. Campbell, Holly Grove, Windsor Park.*
- WANSTEAD PARK.**—Permit on application to the *City Town Clerk, Guildhall, E.C.*
- ST. PAUL'S CATHEDRAL AND WESTMINSTER ABBEY.**—Permits are granted upon application to the *Dean.*
- ZOOLOGICAL GARDENS.**—Permission to photograph is granted; application must be made to the *Secretary, Hanover Square, W.*
- SOUTH KENSINGTON MUSEUM.**—Permission is granted by the *Director.*
- BRITISH MUSEUM.**—Permission is granted by the *Director.*
- CRYSTAL PALACE.**—No photographs are allowed to be taken either in the Palace or the grounds; the sole right being vested in Messrs. Negretti & Zambra.
- NATIONAL GALLERY.**—Special permissions are granted, upon application to the *Director*, to photograph the pictures before 10 a.m.

Head. The lighthouse, Mumble rocks, and the ruins of a castle in Oystermouth Bay will give plenty of work for the camera. A correspondent in the *Amateur Photographer* advises that the best time to take views is about a couple of hours before sunset. The whole of the coast is picturesque, and in some places grand. Caswell and Oxwich Bay abound in caverns which may be explored and photographed by flash light if the tourist should be thoughtful enough to provide himself with apparatus.

NANTWICH (Cheshire).—G. W. and L. N. W. R., 162 miles. D. W. Woolstencroft, 14, Hospital Street, stocks plates, paper, and chemicals.

There is nothing of interest here for the photographer except the church, which is a very noble edifice, and has much worth photographing in the interior.

NEATH (Wales).—G. W. R., 196 miles. D. J. G. Isaacs stocks plates, paper, chemicals, etc.

NELSON (Lancs.).—L. N. W. and Mid. R., 236 miles. D. S. Jessop, 96, Manchester Road, stocks plates, paper, chemicals, etc., and has a *Dark Room* available.

NEWARK (Notts.).—G. N. R., 120 miles. D. H. Fisher, 26, Stodman Street, stocks Edwards' and Ilford plates, paper, chemicals, etc. *Dark Room*—free for changing plates; developing, free to customers; available from 9 a.m. to 10 p.m. Other *Dealers* are J. H. Smith, Bridge Street, and W. Halto, Bridge Street; both stock plates, paper, chemicals, etc., and the former has a *Dark Room* available.

NEWBURY (Berks.).—G. W. R., 53 miles. D. Fielder & Co., Northbrook Street, stock plates, paper, chemicals, etc., and has a *Dark Room* available.

A fine market town, with a few old and quaint buildings, an interesting photograph from the bridge may be taken. The banks of the Kennet will give some good pictures. Donnington Castle and Priory should be visited. Shaw House, the scene of a battle during the Civil Wars, is worth a few plates. Highclere Castle, the seat of Lord Carnarvon, is within walking distance; here the Church (in the park) and the Castle will provide a splendid field for work.

NEW ELTHAM (Kent).—S. E. R., 9 miles. D. H. Lockyer, The Parade, stocks plates, paper, chemicals, etc., and has a *Dark Room* available.

It will interest many to know that this is the nearest station to Colonel North's palatial residence. At Eltham, the old almshouses, church and palace will give good pictures for the photographer, who getting out at New Eltham, visiting Eltham Court, may make his way back to Eltham station, taking the places named *en route*. The approach to the Palace is exceedingly picturesque, and will afford several very beautiful photographs.

NEWCASTLE-ON-TYNE (Northumberland).—G. N. R., 273 miles. D., the following firms stock all kinds of photographic plates, paper, chemicals, and apparatus; and those marked with an asterisk have a *Dark Room* available:—

- *Hall, P., 118, Gray Street.
- *Hurman, F. K., & Co., 2, St. Nicholas Buildings.
- *Mawson & Swan, 13, Mossley Street.
- *Rees, E. J., & Co., 35, Seventh Avenue (Photographer).
- Roberts, J., 1, New Bridge Street.
- Sinclair, C., 51, Cromwell Street.
- *Watson, J., 34, Grainger Street.
- Wilkinson & Simpson, 24, Newgate Street.

Phot. Assoc.—S
Newcastle-on-Ty

The follow
Amateur Photog
by "Novocastri
picturesque sho
the immediate v
North Tyne, bu
abound in mo
chimneys as a
maker would n
lovely scenery.
obtained) expl
Chopwell Woo
recompensed f
should not be
only ecclesiast
cathedral stand
desire seascap
the Tyne and
enough to visi
he will find a
sionist is fon
going to and
will fill his all
object, he sh
'Trimmer' at
'keelmen' no
Hadrian form
contemplates
constitution a
border, North
towers, and c
many traces
twenty miles
photographic
will take him
station, the l
A walk of th
to Ryton old
cottage whe
castle belon
Ovingham,
From Stock
Bywell, whe
and an old c
old church a
Castle lie a
one and a
castle, is no
the subject
itself about
castle, the
the Cathed

Phot. Assoc.—Sec., E. G. Lee, 11, Beverley Terrace, Cullercoats, nr. Newcastle-on-Tyne.

The following is an abstract of an article contributed to the *Amateur Photographer* on "The Tyneside as a Photographic Resort," by "Novocastriensis":—"Certainly the traveller in search of the picturesque should not overlook this neighbourhood, unfortunate as the immediate vicinity of the main line route may be. Not only the North Tyne, but the South Tyne, Derwent Valley, and Devilswater abound in most charming views, not so much marred by colliery chimneys as a stranger might suspect. In many cases the holiday maker would never imagine the proximity of anything but the most lovely scenery. Let him (permission having beforehand been duly obtained) explore the beauties of Axwell and Gitside Parks, the Chopwell Woods, the Devilswater, etc., etc., and he will be well recompensed for his trouble. The neighbouring valley of the Wear should not be omitted, the City of Durham containing objects of not only ecclesiastical interest, but the banks of the Wear, on which the cathedral stands, are full of fine subjects for the camera. Should he desire seascapes, the coasts of Northumberland and Durham, between the Tyne and Wear, are bold and striking, and, if he is fortunate enough to visit them on a fine day, with a strong 'nor-easter' blowing, he will find abundance of shutter work. If the photographic excursionist is fond of the study of character and costume, the pitmen going to and from their daily toil, and the fisher folk at Cullercoats, will fill his album with remarkable subjects; and, while following this object, he should not fail to obtain a few negatives of the stalwart 'Trimmer' at the docks, and, if he can find them, of the *old fashioned* 'keelmen' now remaining on the river. The remains of the wall of Hadrian form a series of most interesting studies; but the tourist who contemplates making a pilgrimage of the wall should be of a good constitution and capable of roughing it. As a county so close to the border, Northumberland abounds in the remains of castles, Peel towers, and other fortified places; and the neighbourhood also shows many traces of former ecclesiastical predominance. Take a run of twenty miles west from Newcastle by train, and the traveller will find photographic work well provided for him. The North Wylans train will take him to Newburn, where an ancient church lies close to the station, the burial-place of W. Hedley, the inventor of the locomotive. A walk of three and a half miles (after crossing the river) brings him to Ryton old church again. New Wylam, the next station west, is the cottage where George Stephenson was born. Then Prudhoe, an old castle belonging to the Duke of Northumberland, and across the River Ovingham, old church and burial-place of Bewick, the engraver. From Stocksfield, ten minutes' walk brings the photographer to Bywell, where he will find *two* curious old churches close together, and an old castle. At Corbridge, two stations further on, there is an old church and the remains of two Peel towers; Aydon and Haughton Castle lie a few miles to the north, and Dilston, with the Devilswater, one and a half mile south-west. Hexham, twenty miles from Newcastle, is now reached, where the old abbey, inside and out, will form the subject of many charming negatives. The city of Newcastle itself abounds in antiquarian objects—remains of the walls and the castle, the churches of St. Andrew, St. John, and St. Nicholas (now the Cathedral), are all worthy subjects for the camera."



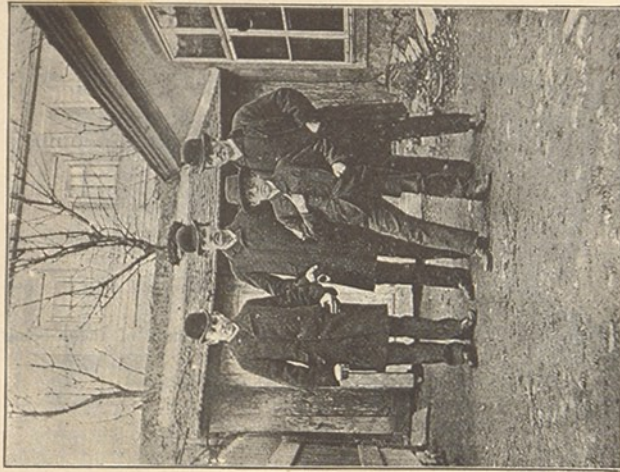
PRINTED ON SCHÖLZIG'S READY SENSITISED PAPER
BY
POULTON & SON, LEE.

and many experim
special attention has
camera workers.
Eastman roll-hold
the very quickest
focusing screen),
sensible camera to
correspondents.
Lens.—In this w
pattern, having no
film, equivalent to
a special mount, C
but the original len
used on any other
Shutter.—This i
is it is well know
special attention h
purpose. It is th
this any exposure
ready setting the



Adams & Co., 81
The "ADAMS"
Takes plates. Ea
screen for use as a
box 4 lbs. only.
This camera is p

BD029832_167_2



Taken with Adams & Co.'s "Hat" Detective Camera.



Taken with Adams & Co.'s "Hat" Detective Camera.

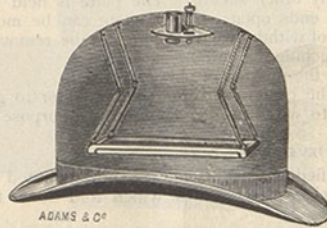
Apparatus.

THE "HAT" DETECTIVE CAMERA.

A practical secret camera that defies detection. Is worn with comfort and is always ready for use.

Innumerable attempts have been made to construct cameras that may be carried easily and secretly about the person; but, whilst possessing many points of ingenuity, it has hitherto been only possible to class them with toys. The size of the plate is usually no larger than a postage stamp, but, as will be seen, our "Hat" camera takes plates $4\frac{1}{2} \times 3\frac{1}{2}$, thus making it a really useful instrument, and one which is capable of producing the very best work.

Lens.—This is a rapid rectilinear of special construction, working at



$f/11$, at which aperture it covers a $\frac{1}{4}$ -plate *sharply* to the corners, and renders everything in focus from about a distance of 8 feet and upwards.

Shutter.—This works between the two lenses, and permits of time as well as instantaneous exposures being given.

Fitting to Hat.—They are sent out correctly focussed, and no difficulty need be experienced in fitting to hat. But if preferred, upon receipt of hat, we undertake the fitting ourselves—free of charge. The figures above show the application.

Weight.—The camera alone weighs $2\frac{1}{2}$ oz. only. It is not necessary to carry the lens and shutter, as this may be immediately placed in position by a bayonet joint. Even with lens and shutter, the weight is only $3\frac{1}{2}$ oz. A focussing screen is also supplied, and one dark slide.

E. & H. T. Anthony, 591, Broadway, New York.

MAGAZINE CAMERA.

Twelve or twenty-four exposures may be made without drawing a slide, or inserting a plate holder, and twelve or twenty-four new plates or films may then be inserted and exposed without going into a dark room. Size 4×5 .

MAGAZINE.

The entirely new magazine camera, are obtained in the camera, are of simple pressure of a spring reservoir at bottom of the camera are exposed or be removed may be changed and the camera being simplicity itself. The camera is filled in the dark room with plates or twenty-four film magazine is fitted on the camera glass is attached to a camera from the camera a fresh plates are deposited when returned to back of



for which it is secured at the bottom when the exposures are now both replaced and the camera is ready for use.

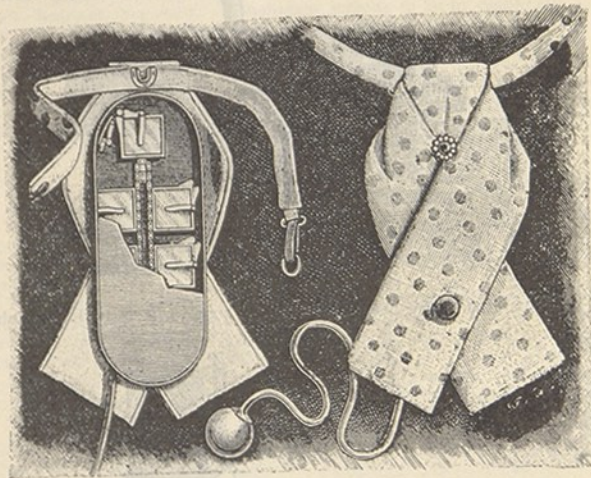
The size of this camera is only $6\frac{1}{2} \times 6 \times 2\frac{1}{2}$ inches. It is fitted as above stated with a magazine of two metal catches and owing to this design it is secured against twelve plates with black metal top cover.

It is provided with a double lens which may be focussed from the front or the back, it is provided with a view finder, and has a bayonet joint which may be used for the lens.

Apparatus.

NEW NECKTIE DETECTIVE CAMERA.

This camera is decidedly unique, and partakes more of the character of the detective camera than any other yet on the market. When charged it carries 6 plates, which are placed in position by turning a milled head



that protrudes through one of the button-holes of the waistcoat, which turns until a stop is felt, then squeeze pneumatic ball, and lens instantly opens and closes.

"MIALL" HAND CAMERA (PATENT).



In appearance is a small Gladstone bag without a solitary movement or projection in view, all mechanism being concealed and protected underneath. Its great feature is that any number of plates or films can be inserted, automatically changed, and taken out 12 at a time without requiring either red light or dark room, in fact all can be done in the brightest sunlight without risk of fogging a single plate. The shutter can be set to work at any speed from $\frac{1}{100}$ second to 2 seconds, or time exposures of any duration can be given at will.

The iris diaphragm is worked from outside, and the lens can instantly be focussed for any distance over six feet, or worked at fixed focus.

Apparatus.

Every "Miall" camera perfect in every detail. Price, covered in box, £9 15s. Extra. The "Miall" holder

FILLING THE "

carries 12 more. It resembles so exact camera.

The Lens is similar to my "Facile," being perfect in definition which can be insured means of the lever

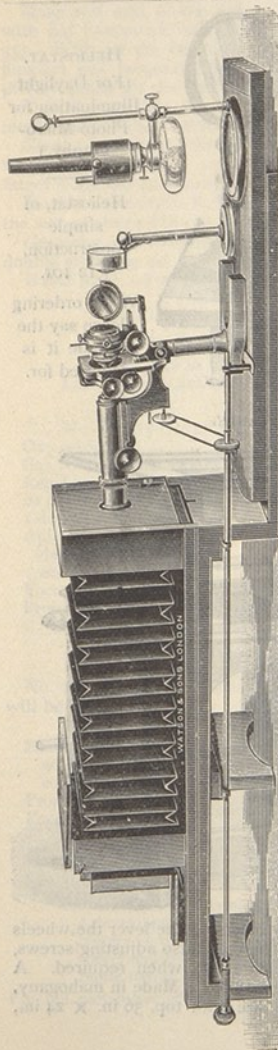
The Shutter works can instantly be set, and it is in F is held back by using only the setting process of setting

Focusing is in 6, 8, 10, 12, 14, or beyond being per

Finders are of camera, and giving view on plate at t

Plate Changing pushing it hard horizontal to the indicator B shown turned upside d

Apparatus.



CAMERAS, ETC., FOR PHOTO-MICROGRAPHY.

The Student's Photo-Micrographic Camera.

Made to suit any Microscope.

Mahogany camera, $6\frac{1}{2} \times 4\frac{3}{4}$ inches. With bellows body, extending to 30 inches, the base of the camera having a divided scale let into it, so that the distance between lens and plate may be accurately known to obtain any desired amount of amplification; has a rod from the back of the camera to the front, to attach to the fine adjustment, for focussing from back of camera, and is fitted with our new pattern projecting front for holding microscope and lamp; this consists of two boards, one rotating on top of the other, on metal centres, the microscope being fitted on this rotating front, the board carrying the instrument can be turned halfway round for adjustment, and the object fixed in position by the eye ready for photography; the board is then turned back, and locks central with the front of the camera. In this way the object can be perfectly adjusted without inconvenience. With one double dark slide, £4 15s.

Inner Frames, for $3\frac{1}{4}$ by $3\frac{1}{4}$, $4\frac{1}{4}$ by $3\frac{1}{4}$, or 5×4 plates, 1s. 9d. each. Extra focussing screen, plate glass, 5s. 6d.



...camera, suitable for
...and 1-plate double d
... 9d. each; extra foc
... with fittings for

Apparatus.

FOR PHOTOGRAPHY.

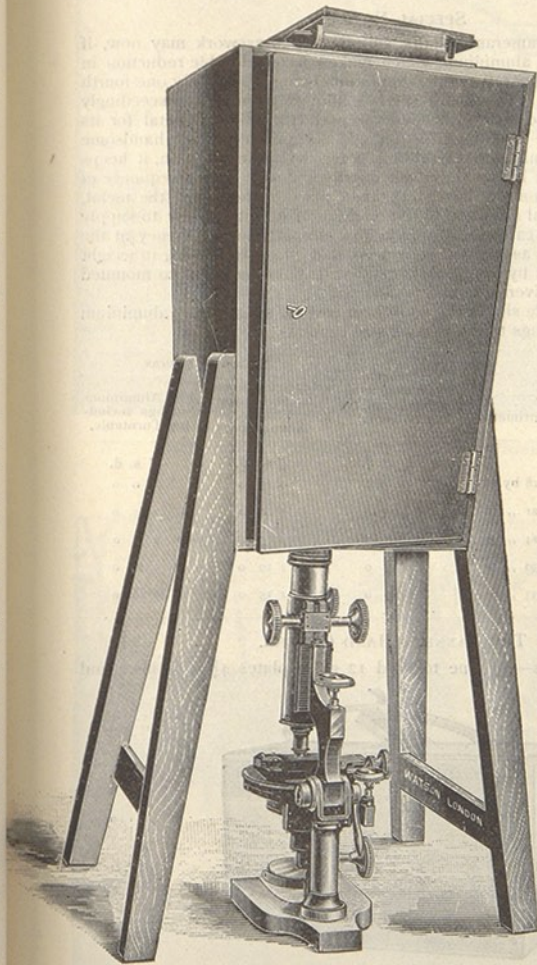
oto-Micrographic era.

Microscope.
ra, 6½ × 4½ inches.
dy, extending to
se of the camera
scale let into it, so
between lens and
urately known to
d amount of am-
rod from the back
he front, to attach
ment, for focussing
era, and is fitted
attern projecting
e microscope and
ts of two boards
p of the other, on
e microscope being
otating front, the
e instrument can
ay round for ad-
e object fixed in
ye ready for pho-
ard is then turned
entral with the
era. In this way
perfectly adjusted
ience. With one
; £4 15s.

or 3½ by 3½, 4½ × 3½
s. 9d. each. Extra
plate glass, 5s. 6d.

VAN HEURCK'S
VERTICAL PHOTO-
MICROGRAPHIC
CAMERA.

Although the horizontal form of camera is generally used, a vertical camera is frequently inquired for, and is becoming increasingly popular, it being exceedingly rigid and efficient. We now make one as illustrated, as used by Dr. Van Heurck for all his delicate high power work. The tube of the Microscope is attached to the camera by means of a velvet cone, and projects through an opening in the base. On one side of the camera body, a door having rabbeted fittings is placed so that the head can enter the camera, and the eye placed to the tube of the instrument to make the adjustments, the door is then closed, and final focussing is done on a screen at the top of the camera.



Price, mahogany camera, suitable for any instrument, having mask and diaphragm, and ½-plate double dark slide £4 15 0
Inner frames, 1s. 9d. each; extra focussing screen, plate glass 0 5 6
mahogany baseboard, with fittings for the camera feet and microscope... 0 17 6