



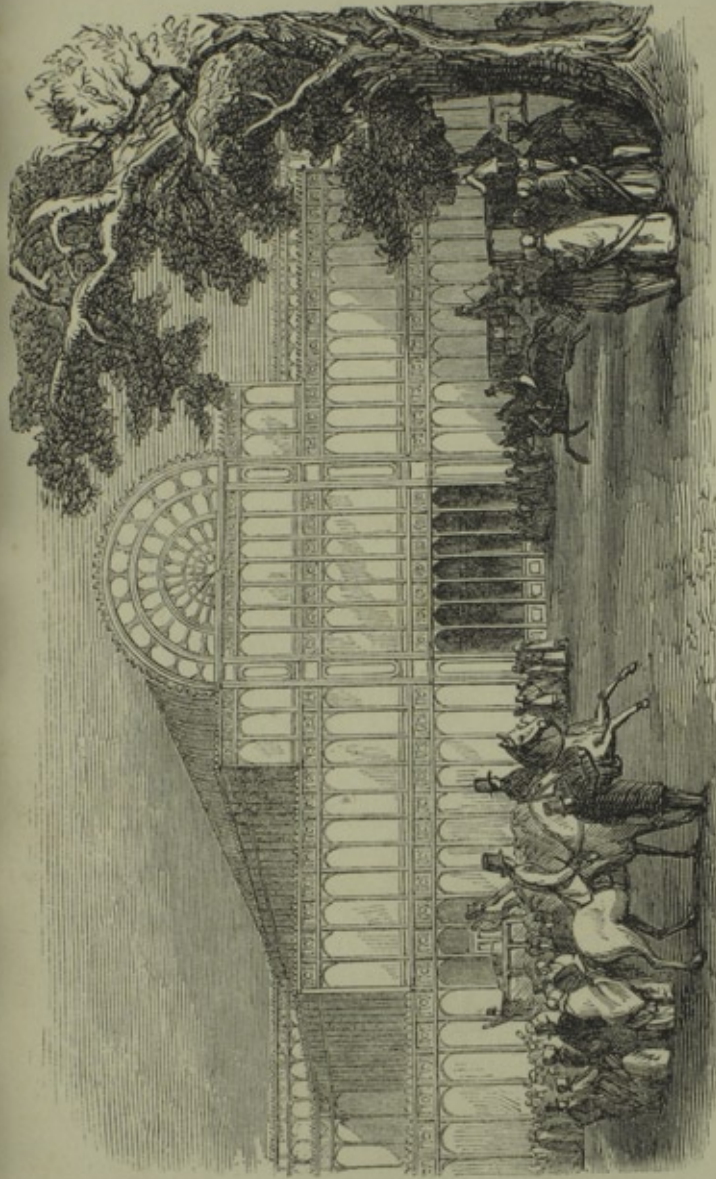
**THE GREAT  
EXHIBITION,  
ITS PALACE,  
AND ITS PRINCIPAL CONTENTS ;**  
With Notices of the Remarkable  
**PUBLIC BUILDINGS**  
Of the Metropolis,  
**PLACES OF AMUSEMENT,**  
And a variety of Information useful to those who  
visit this  
**WORLD'S FAIR,**  
Or desire to possess a record of the Industry, the  
Science, the Arts, and the Ornaments of  
**ALL NATIONS.**  
**WITH ILLUSTRATIONS.**

**ONE SHILLING.**

LONDON:  
GEORGE ROUTLEDGE & CO.,  
36, SOHO SQUARE

BD042700\_001

Book: The Great Exhibition: Its Palace, and its Principal Contents.  
Copyright 2009 University of Exeter, all rights reserved.



THE TRANSEPT OF THE GREAT EXHIBITION PALACE,

*As seen from Prince's Gate.*

GR

NOTIC  
M

GEO

BD042700\_003\_2

Book: The Great Exhibition: Its Palace, and its Principal Contents.

Copyright 2009 University of Exeter, all rights reserved.

*Samuel Swan*

THE  
GREAT EXHIBITION;  
ITS PALACE,  
AND ITS PRINCIPAL CONTENTS.

WITH  
NOTICES OF THE PUBLIC BUILDINGS OF THE  
METROPOLIS, PLACES OF AMUSEMENT, ETC.

BY  
ROBERTS STEPHENSON.

WITH ILLUSTRATIONS.

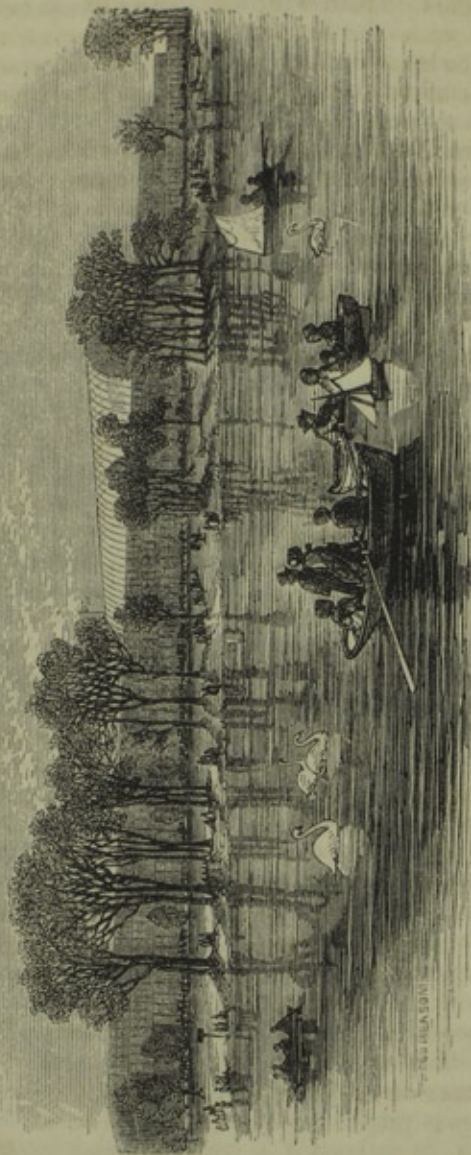
LONDON:  
GEORGE ROUTLEDGE AND CO., SOHO SQUARE.  
1851.

THE TRANSEPT OF THE GREAT EXHIBITION PALACE,  
*As seen from Prince's Gate.*

BD042700\_004

Book: The Great Exhibition: Its Palace, and its Principal Contents.

Copyright 2009 University of Exeter, all rights reserved.



THE GREAT EXHIBITION PALACE,

*As seen from the Serpentine.*

6 inch  
and 3  
with t  
cimen  
two to  
Fro  
(Pho  
and a  
variet  
into a  
sand,  
tifully  
accur

In  
for L  
likely  
the p

H  
for th  
Oper  
o'clo  
the g  
—fro  
Stall  
shop  
R  
Bow  
to H  
the  
D  
E  
Ope  
form  
shill  
shill

6 inches, by 1 foot 9 inches, and weighing between 2 cwt. and 3 cwt. The natural hollow in the centre is studded with the most brilliant crystals of different shades. Specimens of native virgin copper, in lumps weighing from two to six ounces.

From New Zealand, we have specimens of her flax (*Phormium tenax*), some of the native fabrics from it, and a reticule by Miss King, of New Plymouth, of a variety of beautiful woods, manufactured in that country into articles of furniture; and of copper-ore, sulphur, iron-sand, kauri gum, and Waikato coal. Also, a very beautifully-constructed model of a New Zealand war pah, accurately and elaborately prepared as it is.

#### LONDON GUIDE.

In furnishing our readers with a compendious guide for London, we have endeavoured to include everything likely to be visited by strangers. We shall begin with the places of amusement.

##### THEATRES.

*Her Majesty's Theatre*, or the Opera House, Haymarket, for the performance of operas, ballets, and divertissements. Open from March to August. Doors open at half-past seven o'clock, performances commence at eight o'clock. Except in the gallery, visitors are required to be in evening costume—frock coats and coloured trousers being inadmissible. Stalls, one guinea; pit, half a guinea. At the music-shops, tickets are sometimes offered at lower prices.

*Royal Italian Opera*, formerly Covent Garden Theatre, Bow Street, Covent Garden, lately opened in opposition to Her Majesty's Theatre, for like performances, during the same season, at the same hours and prices.

*Drury Lane Theatre*, Brydges Street, Strand.

*Haymarket Theatre*, in the Haymarket, opposite the Opera House. Doors open at half-past six o'clock, performances commence at seven. Boxes and stalls, five shillings; pit, three shillings; galleries, two and one shilling.

*Royal Lyceum Theatre*, Wellington Street North, Strand. Doors open at half-past six o'clock, performances commence at seven. Dress boxes, five shillings; upper boxes, four shillings; pit, two shillings; gallery, one shilling.

*Adelphi Theatre*, Strand, opposite the Adelphi Buildings. Doors open at half-past six o'clock, performances begin at seven. Stalls, five shillings; boxes, four shillings; pit, two shillings; gallery, one shilling.

*St. James's Theatre*, King Street, St. James's, for the performance of French plays. Doors open at half-past six, performances begin at seven. Stalls, half a guinea; boxes, seven shillings; pit, three shillings; gallery, two shillings.

*Royal Princess's Theatre*, Oxford Street, now under the management of Charles Kean. Doors open at half-past six o'clock, performances begin at seven. Stalls, six shillings; dress boxes, five shillings; upper boxes, four shillings; pit, two shillings; gallery, one shilling.

*Olympic Theatre*, Wych Street, Strand. Doors open at half-past six o'clock, performances begin at seven. Boxes, three shillings; pit, one shilling and sixpence; gallery, sixpence.

*Strand Theatre*, 168, Strand. Doors open at half-past six o'clock, performances begin at seven. Stalls, four shillings; boxes, three shillings; pit, one shilling; gallery, sixpence.

*Sadler's Wells Theatre*, New River Head, Islington. Doors open at half-past six o'clock, performance begins at seven. First circle boxes, three shillings; second, two shillings; pit, one shilling; gallery, sixpence.

*Royal Surrey*, St. George's Circus, Blackfriars Road. Doors open at six o'clock, performances begin at half-past six. Boxes, two shillings; pit, one shilling; gallery, sixpence.

*Victoria Theatre*, Waterloo Bridge Road, Lambeth. Doors open at six o'clock, performances begin at half-past six. Boxes, one shilling; pit, sixpence; gallery, threepence.

*Astley's Royal Amphitheatre*, Westminster Bridge Road. Doors open at half-past six, performances begin

at s  
galle  
N  
Door  
Boxe  
sixpe  
Q  
Roac  
past  
sixpe  
A  
oper  
thre  
galle  
C  
quan  
past  
and  
shil  
C  
shil  
I  
and  
  
T  
Ha  
Ha  
Jar  
Ad  
dev  
rel  
wh  
thi  
fee  
  
ne  
hu  
te

at seven. Boxes, four shillings; pit, two shillings; gallery, one shilling; upper gallery, sixpence.

*New English Opera House*, 73, Dean Street, Soho. Doors open at half-past six, performances begin at seven. Boxes, two shillings and sixpence; pit, one shilling and sixpence; gallery, one shilling.

*Queen's Theatre*, Tottenham Street, Tottenham Court Road. Doors open at six, performances begin at half-past six. Boxes, two shillings; pit, one shilling; gallery, sixpence.

*Marylebone Theatre*, Church Street, Paddington. Doors open at half-past six, performances begin at seven. Stalls, three shillings; boxes, two shillings; pit, one shilling; gallery, sixpence.

*City of London Theatre*, Shoreditch. Doors open at a quarter-past six o'clock, performances begin at a quarter-past seven. Private boxes, two shillings; dress circle and stalls, one shilling and sixpence; lower circle, one shilling; gallery, sixpence.

*Grecian Saloon*, Eagle Tavern, City Road. One shilling admission.

*Britannia Saloon*, High Street, Hoxton. One shilling and sixpence admission.

#### CONCERT ROOMS.

The chief places at which *Concerts* are given are Hanover Square Rooms, Hanover Square; St. Martin's Hall, Long Acre; Willis's Rooms, King Street, St. James's; Crosby Hall, Bishopsgate Street; Music Hall, Adelaide Street, Strand; Exeter Hall, Strand, chiefly devoted to meetings, and the uses of benevolent and religious societies, and to concerts of sacred music, which take place in the great hall, one hundred and thirty feet in length, ninety feet broad, and forty-eight feet in height, with an arched roof.

#### EXHIBITIONS.

*The Colosseum*, Regent's Park, is similar in design, and nearly as large, as the Pantheon at Rome; and is one hundred and thirty feet in diameter, by one hundred and ten feet in height; polygonal in form, surmounted by a

glazed cupola. In front is a portico, with six large fluted columns, of the Grecian-Doric order, supporting a bold pediment.

The exhibitions offered to the public in this building are a Museum of Sculpture, containing admirable specimens by several of the most eminent artists of Europe, colossal statues, minor figures beautifully wrought, and busts of eminent persons. In the centre of this apartment is an immense organ, performances on which take place during the afternoon and evening. The Panorama of the Lake of Thun in Switzerland, painted in *tempera*. The Conservatories, piled with flowers and shrubs, multiplied by the introduction of looking-glasses, in which is introduced a Gothic aviary, peopled with a variety of birds of bright plumage, and the Temple of Theseus. The Swiss Cottage, and with mountain scenery. Open daily from half-past ten till five o'clock, and in the evening from seven till half-past ten, with music. Admission, two shillings.

*The Cyclorama*, in Albany Street, Regent's Park, is an exhibition of singular novelty and attraction, consisting of a Panorama of Lisbon, the Scenery of the Tagus, and the Earthquake of 1755. The dioramic effects of shade and colour are very beautifully varied, and the moving parts of the picture contrived with great cleverness, to reproduce the appalling scene in all its attractive horrors. Open daily at two and half-past three o'clock; and in the evening at half-past seven and nine o'clock. Admission, one shilling; reserved seats, sixpence extra.

*The Diorama*, Regent's Park. It differs from the Panorama in this respect, that instead of a circular view of the objects represented, it exhibits the whole picture at once in perspective; and it is decidedly superior, both to the Panorama and Cosmorama, in the fidelity with which the objects are depicted, and in the completeness of the illusion. Open daily, from ten till six o'clock. Admission, two shillings.

*Burford's Panorama*, in Leicester-square. This exhibition is the oldest establishment of the kind in London, having been originally opened in 1790. One of the pre-



sent subjects is a painting of the Arctic Regions, from drawings taken by Lieutenant Browne, R.N., of H.M.S. *Enterprise*, and presented to Mr. Burford by the Admiralty: the others are the Lakes of Killarney, and the ruins of Pompeii. The views are open from ten o'clock till dusk. Admission, one shilling each view; or two shillings and sixpence to the three.

*Diorama of Australia*, at the Western Institution, Leicester-square. This consists of a series of views, illustrative of emigrant and convict life in Australia, and shows the peculiar features of its landscape scenery, with views of Sidney, Port Jackson, Hobart Town, Port Arthur, Norfolk Island, &c.; the whole being accompanied with a descriptive lecture. Open daily, at three and eight o'clock. Admission, one shilling.

*The Gallery of Illustration*, 14, Regent-street. This exhibition consists of a Diorama of the Overland Route to India, representing the journey from Southampton to Calcutta. Calshot Castle, the Isle of Wight, the Needles, the Bay of Biscay, Cintra, Cape St. Vincent, Cape Trafalgar, and Tarifa, are successively shown to the spectator, when the scene closes, and a stationary view of Gibraltar is represented. The voyage is then continued to Malta, of which there is another stationary picture. Alexandria, the Nile, Cairo, the Desert, and Suez, are objects in a third stage of the Diorama: and the last, after exhibiting the Maldives, Ceylon, and Madras, terminates with a view of Calcutta. Open daily, at twelve, three, and eight o'clock. Admission, one shilling; stalls, two shillings and sixpence; reserved seats, three shillings.

*Diorama of our Native Land*, illustrative of England and its seasons; Gallery of Illustration, 14, Regent-street, Waterloo-place, Pall-mall. In this exhibition will be found an attempt to depict the amusements and employments of a country life during the several varieties of spring, summer, autumn, and winter. Open daily. Admission, one shilling.

*New Oriental Diorama*, Willis's Rooms, King-street, St. James's. Illustrative of Life and Scenes in India. Open on Mondays, Wednesdays, and Saturdays, at two

o'clock and eight. Admission: front seats, two shillings and sixpence; back seats, one shilling.

*The Cosmorama*, 209, Regent-street. Present delineations of the celebrated remains of antiquity, and of the most remarkable cities and edifices in every part of the globe. Open daily, from ten till six o'clock. Admission, one shilling.

*Fremont's Panorama of California*, Egyptian Hall, Piccadilly. A moving Diorama of Fremont's Overland Route to Oregon, Texas, and California. Open daily, at half-past two and a quarter before eight o'clock. Admission, one shilling.

*Panorama of the Nile*, Egyptian Hall, Piccadilly. This grand moving Panorama of the Nile gives as perfect a representation of the various localities as can be effected by any pictorial display. Open daily: afternoons at three o'clock; evenings at eight o'clock. Admission: stalls, two shillings; pit, one shilling; gallery, sixpence.

*Her Majesty's Visit to Ireland*, Apollonicon Rooms, St. Martin's-lane. A moving Diorama, embracing the principal points of the Queen's memorable Visit to Ireland. Open daily, at three and eight o'clock. Admission, one shilling; reserved seats, two shillings.

*Brees's Panorama*, 393, Strand. A series of three panoramic views, illustrative of Ceylon, Calcutta, and Wellington, New Zealand; from drawings made on the spot, by S. C. Brees, Esq., C. E. Open daily, at one, three, half-past four, and half-past eight o'clock. Admission, one shilling; reserved seats, two shillings; stalls, three shillings.

*Panorama of New Zealand*, Linwood Gallery, 6, Leicester-square. This Panorama gives the visitor a truthful idea of this very beautiful country; mountains covered with magnificent trees, alternate with plains, clothed in crimson bloom, watered by numerous streams, where the flax-plant grows abundantly, and its palm-like ferns reach the astonishing height of 40 feet.

Panoramas of Adelaide and the Brazils are also exhibited here, in connection with the panorama of New Zealand, all of which are from Mr. Brees's designs, and

have  
curac  
taken  
and e  
shilli

*Pa*  
stree  
is di  
phori  
tinop  
the i  
and  
shilli

*E*  
Low  
tion  
near  
move  
riety  
wont  
and  
parte  
by a  
hung  
subje  
displ  
some  
ing,  
miss

*P*  
Poly  
two  
Indi  
land  
half-  
two

*H*  
Port  
part  
vario

have been painted by eminent scenic artists. Their accuracy may be fully relied upon, the surveys having been taken for railway purposes. Open daily, at twelve, three, and eight o'clock. Admission to the three: stalls, three shillings; lower seats, two shillings; gallery, one shilling.

*Panorama of Constantinople*, Polyorama, 309, Regent-street, adjoining the Royal Polytechnic Institution. It is divided into two parts; the first showing the Bosphorus, the Dardanelles, and the exterior of Constantinople; and the second conducting the spectator into the interior of the city. Open daily, at twelve, three, and eight o'clock. Admission, one shilling; stalls, two shillings and sixpence; reserved seats, three shillings.

*Exhibition of Art*, adjoining the Adelaide Gallery, Lowther Arcade, Strand. A curious and costly collection of mechanical singing-birds and animals, which by means of complicated machinery imitate their natural movements, an automaton female organist playing a variety of tunes; flowers that open and close, as is their wont, in the morning and evening; various mechanical and musical clocks; some miniature waxen busts of departed British worthies; and a process of egg-hatching by artificial means. The walls of the various rooms are hung with tapestry, representing Scripture and other subjects. There is likewise a series of cosmoramic views, displaying the private apartments in Windsor Castle, and some interesting continental scenes. Open daily: morning, from eleven till five; evening, seven till ten. Admission, one shilling.

*Portland Gallery*, 316, Regent-street, opposite the Polytechnic Institution. A grand moving diorama, in two parts, in which the spectator is taken through Upper India from the point at which the Diorama of the Overland Route terminates. Open daily, at half-past two and half-past seven. Admission, one shilling; reserved seats, two shillings and sixpence.

*Royal Polytechnic Institution*, 309, Regent-street, near Portland-place. The exhibition consists for the most part of mechanical and other models, distributed through various apartments; there is a hall, devoted to manu-

facturing processes, a laboratory beneath, a theatre or lecture-room above, a very spacious hall, and other apartments. Open daily, from ten till five o'clock, and from seven till ten o'clock. Admission, one shilling.

*South African Exhibition*, Chinese Gallery, Hyde-park-corner. A highly interesting collection of trophies connected with the chase, procured during a five years' residence in the interior of South Africa, by the prowess and indomitable daring of the proprietor, Gordon Roualeyn Cumming, Esq. Open daily. Admission, one shilling.

*Cantelo's Hydro-Incubator*, Leicester-square, exhibits the whole process of Incubation, from the first microscopic speck of existence until it emerges a beautiful and perfect little bird. Open daily, from ten o'clock in the morning till ten at night. Admission, one shilling.

*Madame Tussaud's Exhibition Bazaar*, Baker-street, containing an immense and celebrated collection of Wax Figures. Open daily, from 10 a.m. till 10 o'clock p.m. Admission, one shilling.

*Catlin's Exhibition*, 6, Waterloo-place, Pall-mall, illustrative of Savages and Savage Life in North America. Open daily, from 9 till 6. Admission, one shilling.

*The Chinese Junk*, Temple-pier, Essex-street, Strand. Open daily. Admission, one shilling.

#### MUSEUMS, GALLERIES OF ART, ETC.

*The British Museum*, Great Russell-street, Bloomsbury. In this great National Institution, which has been recently rebuilt, the principal divisions are,—the Entrance-hall; the King's Library; Central Hall; Natural History Department, divided into five galleries; Eastern Zoological Gallery; Gallery of Antiquities; Lycian Room; Elgin Saloon; Mummy Room; and the Great Library. Persons applying for the purposes of study or research, are admitted to the reading-rooms every day, from nine o'clock in the morning until four in the afternoon, between the 7th of September and the 1st of May; and until seven o'clock in the evening, between the 7th of May and the 1st of September. Artists are admitted to study in the galleries of sculpture between