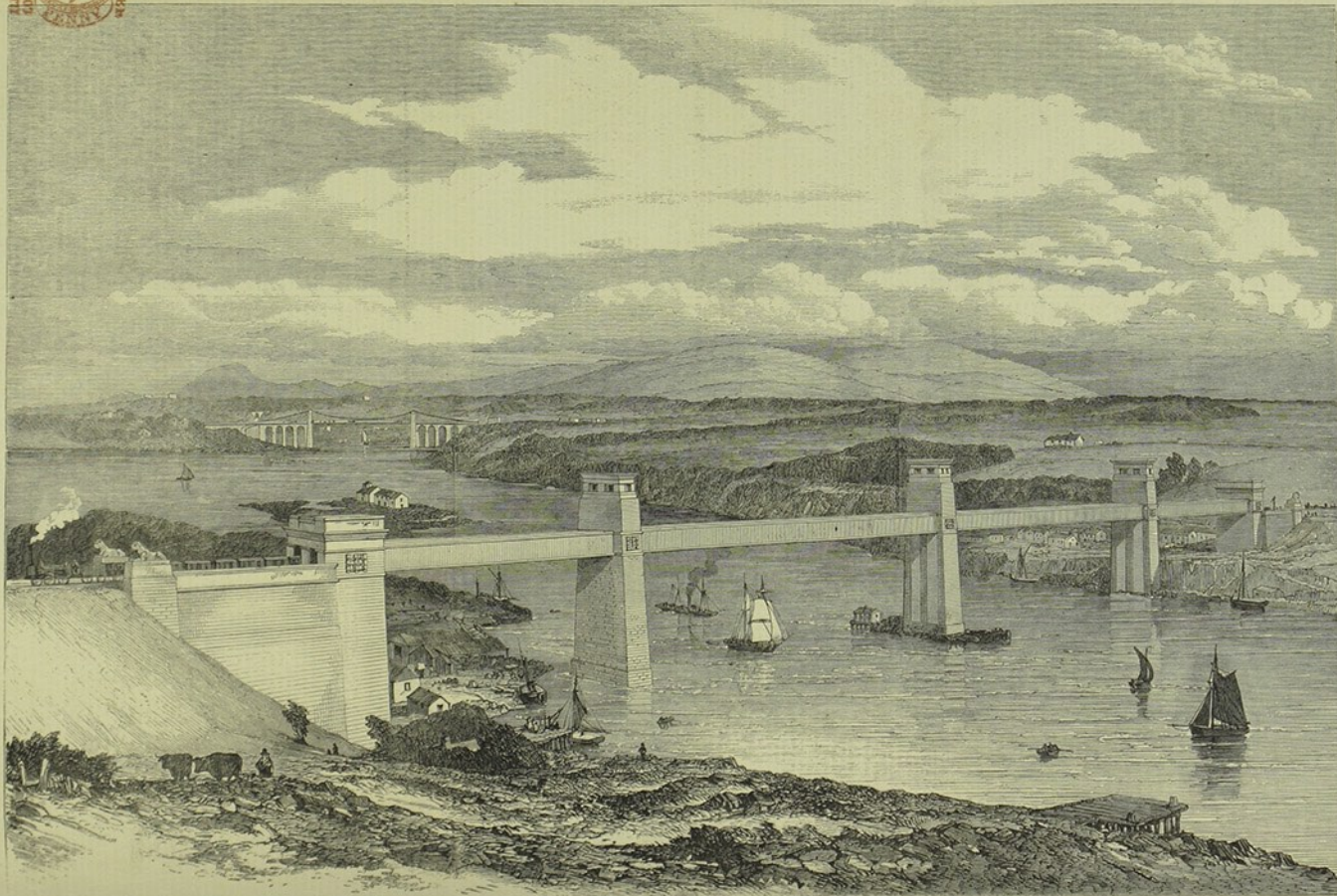


ILLUSTRATED
LONDON NEWS
1860



THE BRITANNIA TUBULAR BRIDGE ACROSS THE MENAI STRAITS.—SKETCHED FROM THE ANGLESEY SHORE.

192

THE ILLUSTRATED LONDON NEWS.

MARCH 23, 1860.

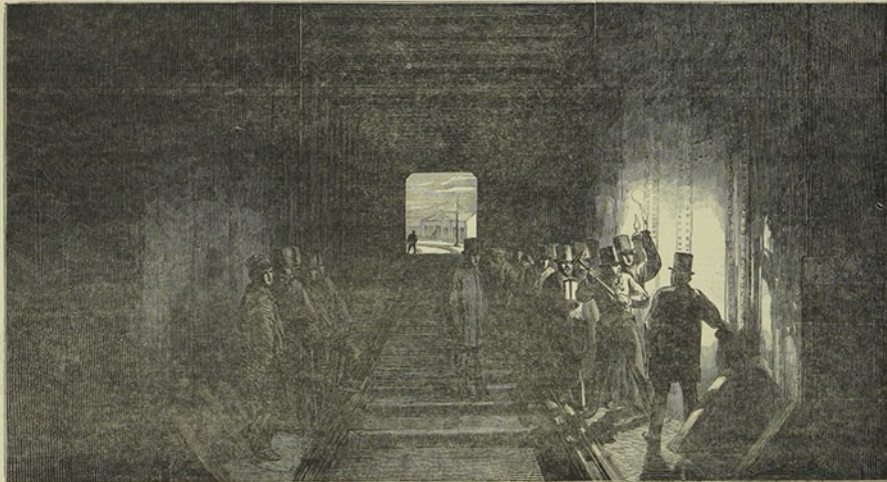
b15957913_0016_103_2

Illustrated London News: 'The Britannia Tubular Bridge across the Menai Straits'

Copyright 2009 University of Exeter, all rights reserved.



THE BRITANNIA TUBULAR BRIDGE.—ENTRANCE FROM THE BANGOR SIDE.



INTERIOR OF THE TUBE.—MR. STEPHENSON DRIVING THE LAST EYEBOLT.

b15957913_0016_104

Illustrated London News: 'The Britannia Tubular Bridge across the Menai Straits'

Copyright 2009 University of Exeter, all rights reserved.