



EUROPEAN UNION



Tourism pressure and opportunity maps for North Devon Biosphere Reserve: Outputs from a decision-support tool

Timothy Wilkinson¹, Carolyn Petersen², Andrew Bell³, Nick Bearman⁴ and Luc Barbier⁵



¹ Centre for Rural Policy Research, University of Exeter.

² Centre for Rural Policy Research, University of Exeter.

³ North Devon Biosphere Reserve, Devon County Council.

⁴ Geospatial Training Solutions.

⁵ Réserve de Biosphère Marais Audomarois / Le Parc naturel régional des Caps et Marais d'Opale.

Acknowledgements

These maps were produced as part of the BioCultural Heritage Tourism Project, funded by the EU InterReg France (Channel) England programme. This project is co-financed by the European Regional Development Fund (ERDF).

Attribution of GIS model output maps (heat maps): Created by Mapping Opportunity & Pressures for Sustainable Tourism (MOPST) – Nick Bearman supported by the Interreg EU England Channel Region funded BioCultural Heritage Tourism project, Devon County Council and the University of Exeter.

The GIS mapping and modelling outputs draw on a series of databases and copyrighted data sources acknowledged here (see Table 3 for details of data sources): © Ordnance Survey 2019/2020; © Crown copyright (for Defra Magic maps) 2019/2020; © OpenStreetMap 2019/2020; © Corine Land Cover Copernicus Programme 2018. For Historic England data (Heritage at Risk sites and Scheduled Monuments) © Historic England 2018/2019/2020. © Crown Copyright and database right 2018/2019/2020. All rights reserved. Ordnance Survey Licence number 100024900. The Historic England GIS Data contained in this material was obtained on 10/07/2019 and 26/04/2020. The most up to date publicly available Historic England GIS Data can be obtained from [HistoricEngland.org.uk](https://historicengland.org.uk).

Devon County Council also provided data sources for the mapping and modelling. We also acknowledge the various open data sources that have contributed to this work including Protected Planet, WheelMap (via OpenStreetMap) and TripAdvisor (figures only; not GIS data).

The authors would also like to acknowledge the valuable contributions of partner organisations and staff at all four participating Biosphere Reserves (North Devon Biosphere Reserve, Brighton and Lewes Downs Biosphere Reserve, Réserve de Biosphère Iles et Mer d'Iroise and Réserve de Biosphère Marais Audomarois) who provided and suggested GIS data sources for the model for their local Biospheres.

For more information on the method used to produce the maps and how to interpret them, please see: Wilkinson T., C. Petersen, A. Bell, N. Bearman and L. Barbier. 2021. GIS Mapping and Modelling of Tourism Pressure and Opportunities for Sustainable Tourism in four UNESCO Biosphere Reserves (UK and France): A decision-support tool to guide strategic tourism decision-making. BioCultural Heritage Tourism Project Report. Available on: <https://github.com/mopst/reports>

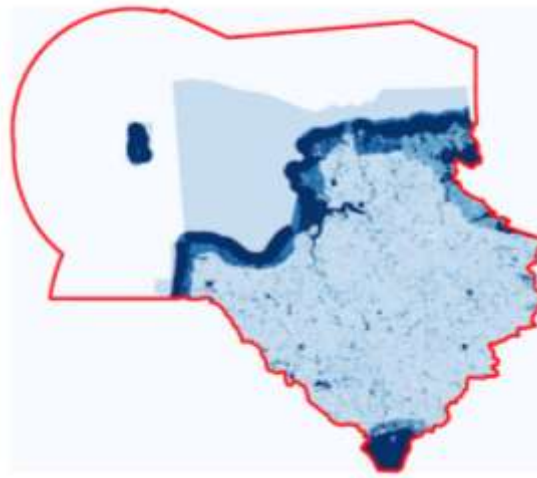
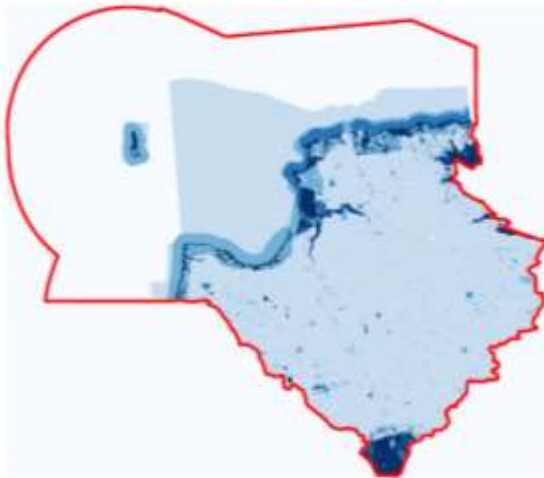
The maps are intended to support decision-making; not replace deliberation.

North Devon Biosphere Reserve Output Maps

NDBR Pressure Summer – Baseline and all three scenarios

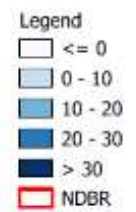
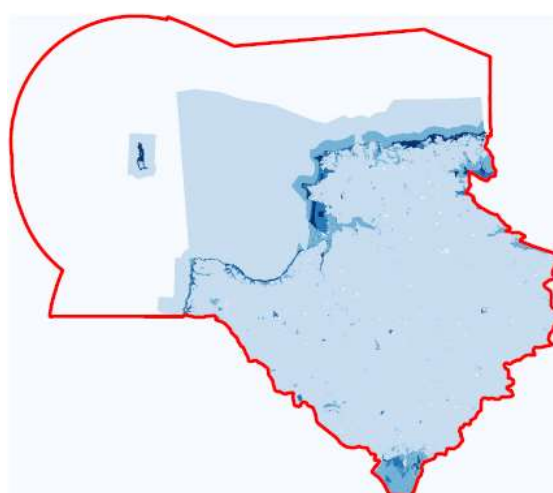
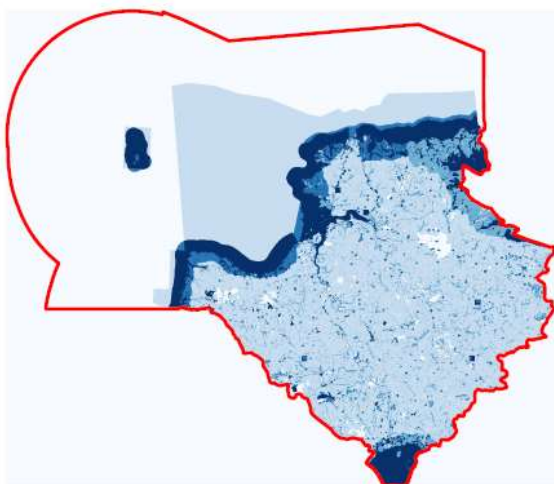
Baseline

Business as usual



Less regulation

Responsibility and custodianship



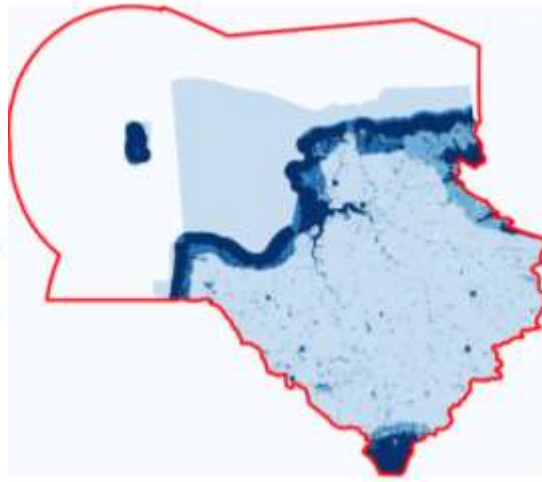
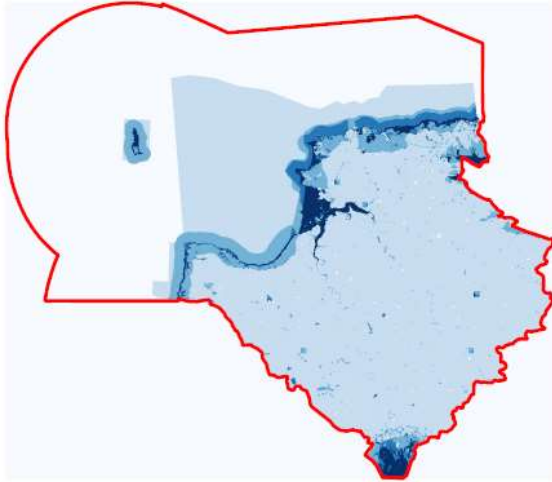
Created by MOPST (github.com/mopst)⁶

⁶ All model and module output maps created by Mapping Opportunity & Pressures for Sustainable Tourism (MOPST) - Nick Bearman supported by the Interreg EU England Channel Region funded BioCultural Heritage Tourism project, Devon County Council and the University of Exeter.

NDBR Pressure winter – Baseline and all three scenarios

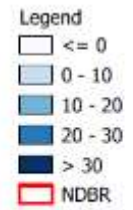
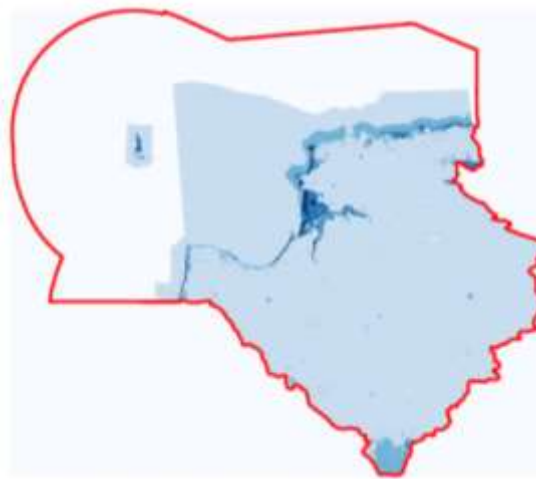
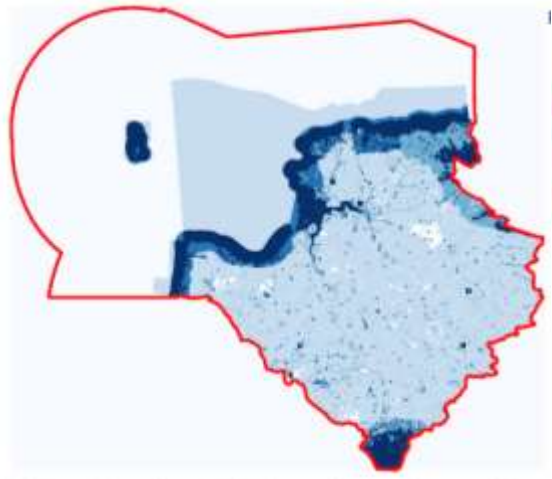
Baseline

Business as usual



Less regulation

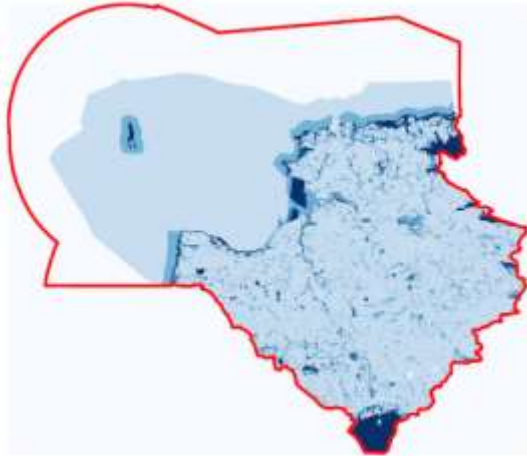
Responsibility and custodianship



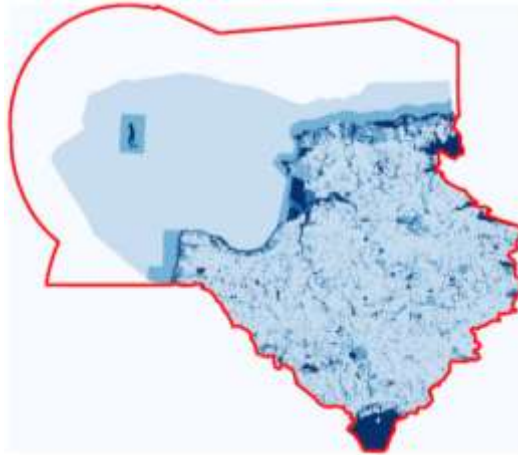
Created by MOPST (github.com/mopst)

NDBR Opportunity Summer – Baseline and all three scenarios

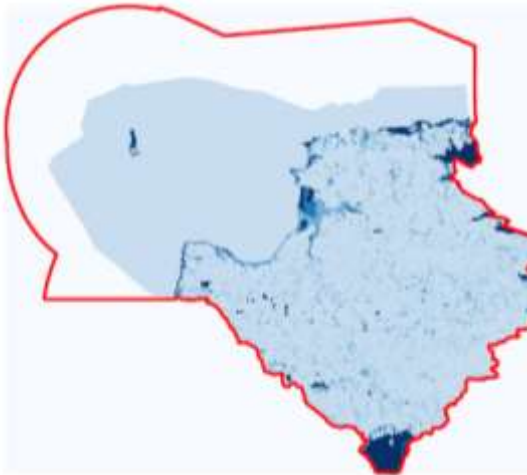
Baseline



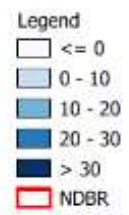
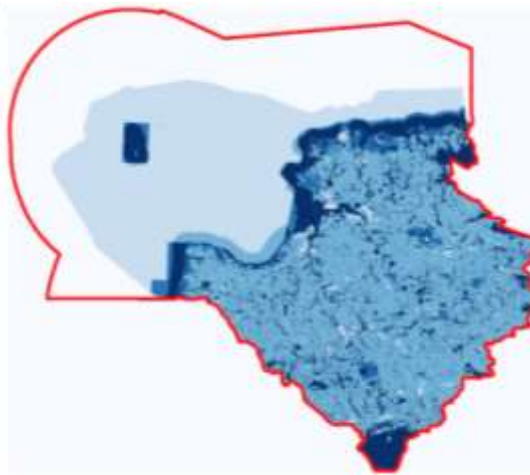
Business as usual



Less regulation



Responsibility and custodianship

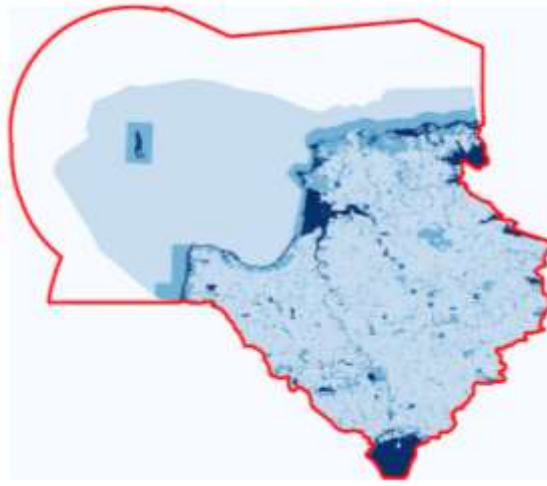
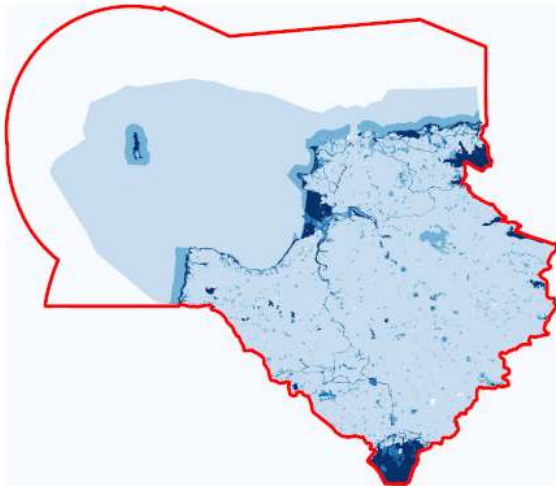


Created by MOPST (github.com/mopst)

NDBR Opportunity Winter – Baseline and all three scenarios

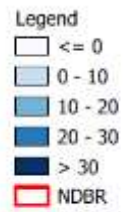
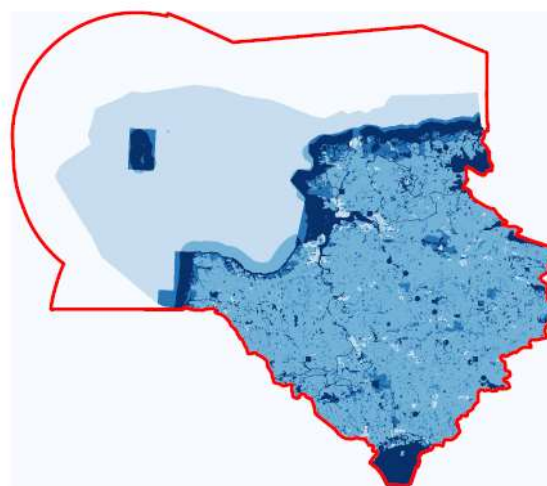
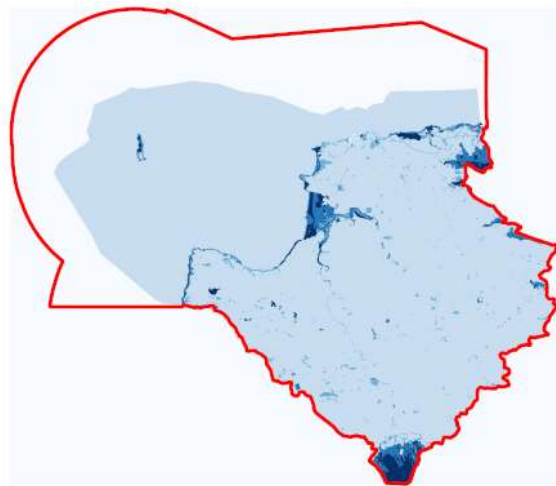
Baseline

Business as usual



Less regulation

Responsibility and custodianship



Created by MOPST (github.com/mopst)