


A revised morphing algorithm for creating future weather for building performance evaluation

Building Serv. Eng. Res. Technol.
2023, Vol. 0(0) 1–16
© The Author(s) 2023



Article reuse guidelines:
sagepub.com/journals-permissions
DOI: 10.1177/01436244231218861
journals.sagepub.com/home/bse



Matthew E Eames¹ , Hailun Xie^{1,2}, Anastasia Mylona², Ruth Shilston³ and Jake Hacker^{3,4}

Abstract

Climate change is one of the greatest challenges the building industry faces. Engineers and architects require representative future weather data if they would like to see how their buildings and designs will fare under a changing climate. The most common method used to create future weather involves manipulating observations commonly known as morphing, but the most used algorithms can create implausible weather conditions due to their unbounded nature. Here, bounded morphing algorithms will be described and their effectiveness proved mathematically. The improved bounded method applies two additional conditions on the morphed distribution to the maximum and minimum values, in addition to the mean values. The benefits over the standard approach will also be illustrated considering the changes in the distribution of temperature and solar irradiation due to climate change. The improved algorithms outperform the standard morphing procedures in terms of preserving the underlying climate signal while not creating unrealistic or implausible weather conditions. This method should give engineers confidence that the generated future weather series are more robust and representative of potential future weather. **Practical application:** The use of future weather to inform building design is now commonplace within the industry. Reliable weather files are crucial to support and deliver strategies for decarbonisation and adaptation to climate change in the built environment and the wider industry. This article provides support for the use of revised morphing algorithms which result in improved future weather time series which can be used in building simulation. For example, when applied to the temperature, it can be used to produce more accurate representations of future temperature profiles due to climate change, and for building performance assessment, such as energy consumption and overheating. It plays an important role in producing reliable and realistic weather data for future-proof building design.

¹Environment and Economy, Department of Engineering, University of Exeter, Exeter, UK

²Chartered Institution of Building Services Engineers, London, UKK

³Arup, London, UK

⁴The Bartlett School of Environment, Energy and Resources, University College London, London, UK

Corresponding author:

Matthew E Eames, Environment and Economy, Department of Engineering, University of Exeter, harrison Building, North Park Road, Exeter EX4 4QF, UK.

Email: M.E.Eames@exeter.ac.uk

Keywords

Future weather data, climate change, morphing, weather data for modelling, simulation and design

Received 18 October 2023; Revised 18 November 2023; Accepted 19 November 2023

Introduction

Hourly weather data files or *weather years* are an important resource for building simulation studies. These weather files mostly take the form of typical weather years of a particular location and are created from historic observations.^{1,2} There are several approaches that have been adopted for the generation of typical weather files such as the Test Reference Year (TRY),³ Typical Meteorological Year (TMY)⁴ or International Weather for Energy Calculation (IWEC).⁵ The process for creating the files is similar with weather variables in a given month ranked to determine the most average, from which the most average months are assembled to create a composite average year. Such weather years can form the industry-standard and their use can be a requirement by building regulations and other codes and standards. For example, in the UK, the Chartered Institution of Building Services Engineers (CIBSE) provides a set of TRY weather years which since 2006 have been made available for 14 site locations.^{1,3} Additionally, in some countries warm weather data sequences are used for the purpose of overheating risk analysis and cooling system sizing, for example in the UK, the CIBSE Design Summer Years.^{3,6}

In all these cases, the weather years are based on historical observed data. Climate change presents the likelihood that the historic climate we have experienced in the past is unlikely to be representative of the weather conditions that will be experienced in the future over the next few decades.⁷ In recent years, the world has experienced unprecedented extreme events. The European heat wave of 2019 has been found to be 10 times more likely due to climate change.⁸ This single event broke several records at single locations and for example exceeding the highest temperature recorded in France by 2°C and caused excess mortality in the thousands.^{9,10}

Such heat events though are expected to become more common.⁷ The warming will largely be driven by anthropogenic emissions, a warmer atmosphere with modifications due to aspects such as the position of the Jet streams. Whilst these local effects are uncertain, studies have demonstrated that Europe is warming faster than the rest of the northern mid-latitudes over the past 42 years due to more persistent double jets over Europe.⁹ Across the world it is expected that warmer temperatures will be compounded with more frequent heatwaves and drought.¹⁰ It has long been suggested that using historic observations for building design could be inappropriate considering the potential impact of climate change,^{11,12} and the speed and unprecedented nature of recently observed extreme weather events further puts their use into question.

In recognition of the need to take account of future climate changes in building design, CIBSE introduced in 2009 a set of TRY and DSY weather years reflective of possible future climates based on the UK government's UKCIP02 climate change scenarios for the United Kingdom. These weather years were called the CIBSE Future Weather Years. The methodology used to produce the CIBSE Future Weather Years is described in CIBSE TM48.¹³ The methodology was based on a method to apply the climate change projections to the existing weather file which was called 'morphing'.¹⁴ The morphing method consists of adjusting an observed weather year using a set of mathematical operations that result in a new weather year that has new average monthly climate conditions consistent with the climate change projections but retains the hour-to-hour variability of the observed weather timeseries. The morphing method is one of several 'downscaling' methods through which the coarse spatial and temporal scale information from climate models can be incorporated to produce the site-specific hourly weather data required for building simulation.¹⁵

While the use of future weather data within building simulation is now very much commonplace within research and industry, nearly all studies use Belcher et al.'s morphing method. Even a recent open access tool uses the morphing methodology exactly as described by Belcher et al.¹⁶ However, there are clear compromises in the use of this method. For example, as discussed by Belcher et al., not all characteristics of the predicted change in temperature could be preserved within the transformed data. In recognition of the limitations of the Belcher et al. algorithms, a revised set of algorithms were developed by researchers at Arup for the CIBSE TM49 project, which developed new Design Summer Years for London.¹⁷ These algorithms were also used in the production of the 2016-issue CIBSE weather years¹⁸ and have been used in the Arup proprietary tool WeatherShiftTM.¹⁹ While Dickinson and Brannon briefly introduced the concept of a bounded transformation,¹⁹ to date there has been no published proof that such algorithms are suitable or how they improve on the original morphology methodology.

In this work we will first go through the original morphing procedure in detail to demonstrate its limitations with respect to the adjustment of temperature data. We will then describe the revised morphing algorithms which we term a Weighted Stretch and a Bounded Temperature Weighted Stretch. Most of the impacts on the transformed weather series are self-evident from the mathematical formulation of the approach taken, but in the results, we will show the key differences between the revised and the Belcher et al. morphing algorithms on the transformed weather files including the impacts on the outputs from building simulation.

Original morphing algorithms

The creation of a future weather file using a morphing method starts with a timeseries of observations of a weather variable, x . For our purposes here the timeseries will be at an hourly resolution and will be for the period of 1 month duration. We consider a single month since this is the finest resolution at which the climate change anomaly or 'change factor' are provided. A change

factor is a projected change in the monthly average value of a variable relative to the baseline period. A morphing operation is a mathematical algorithm that adjusts the timeseries, x , to produce a new time series, x' , which has similar hour-to-hour variability but different average properties. The change in the average properties is specified by the change factor. The original morphing algorithms considered the application of three types of transformation: a 'simple shift', a 'simple stretch' and a 'shift and stretch'.

A simple shift can be defined by,

$$x' = x + \Delta x_m, \quad (1)$$

where Δx_m is the absolute change in the monthly mean value. With this transformation every value is shifted by the expected change in the mean. The new monthly mean is then also shifted by the change factor and the variance remains unchanged.

A simple stretch is defined as,

$$x' = \alpha_m x, \quad (2)$$

where α_m is the fractional change in the monthly mean. This method changes the monthly mean by the same transformation and the variance is changed by a factor of α_m^2 .

A shift and stretch is defined as a combination of a simple shift and a simple stretch and is defined by

$$x' = x + \Delta x_m + \alpha_m(x - \tilde{x}), \quad (3)$$

where \tilde{x} is the monthly mean of original time series. The new monthly mean is shifted by Δx_m and the variance is changed by a factor of α_m^2 .

The use of a particular algorithm depends on the weather variable and the change factors that are available. Using the example of UKCP18's probabilistic projections (table 1) the algorithms could be applied.

Cloud cover is measured in Oktas, but the change factor is a percentage change. The first step is to convert the percentage change to an absolute value whereby equation (1) could be applied.

Solar radiation has a clear diurnal cycle, and any change must preserve this distribution. The change factor though is given as an absolute change. The absolute change can be converted to a fractional

Table 1. UKCP18 probabilistic change factors and units.

Surface variable change factor (UKCP18 short name)	Unit
Cloud cover (cc)	%
Total downward short-wave flux (rsds)	Wm ⁻²
Sea level pressure (psl)	hPa
Specific humidity (huss)	%
Maximum temperature (tasmax)	°C
Minimum temperature (tasmin)	°C
Mean temperature (tas)	°C

change by normalising the change to the observed baseline ie $\alpha_{m,rsds} = \left(1 + \frac{\Delta rsds}{x_{rsds}}\right)$, where by equation (2) can then be used.

The sea level pressure can be calculated by taking the observed atmospheric pressure and applying the equation (1) using the absolute change specified in the projections.

Specific humidity is not observed but can be calculated from temperature, air pressure and relative humidity which are all measured. The specific humidity is given as a percentage change so the change factor can be derived from $\alpha_{m,huss} = 1 + \frac{\Delta huss}{100}$ whereby equation (1) can be applied. If, as in UKCP18, the change in relative humidity is not an output then the new relative humidity can be derived from the new specific humidity time series.

Dry bulb temperature (dbt) has three change factors associated. Namely the change in the mean, daily maximum and daily minimum of which all three are used to derive the morphed time series. The scaling factor is given by:

$$\alpha_{m,dbt} = (\Delta x_{tasmax} - \Delta x_{tasmin}) / (\tilde{x}_{dbt,max} - \tilde{x}_{dbt,min}), \quad (4)$$

where $\tilde{x}_{dbt,max}$ and $\tilde{x}_{dbt,min}$ are the average daily maximum and average daily minimum dry bulb temperature of the original time series respectively. The morphed temperature is then given by applying equation (3).

The application of the morphing algorithms is relatively straight forward in each case. However, there are some clear limitations with this method.

1. Morphing the dry bulb temperature preserves the change in the mean temperature and the change in average diurnal temperature range

given by the three change factors but not the projected daily average maximum temperature and daily average minimum temperature independently. It can be verified that:

$$\tilde{x}'_{dbt} = \tilde{x}_{dbt} + \Delta x_{tas}, \quad (5)$$

and

$$\begin{aligned} \tilde{x}'_{dbt,max} - \tilde{x}'_{dbt,min} &= \tilde{x}_{dbt,max} - \tilde{x}_{dbt,min} \\ &+ (\Delta x_{m,tasmax} - \Delta x_{m,tasmin}). \end{aligned} \quad (6)$$

But $\tilde{x}'_{dbt,max} \neq \tilde{x}_{dbt,max} + \Delta x_{m,tasmax}$ and $\tilde{x}'_{dbt,min} \neq \tilde{x}_{dbt,min} + \Delta x_{m,tasmin}$

Hence only one of the change factors is conserved in the new time series.

2. For variables such as cloud cover there is a physical limit which the transformed time series can not go beyond. In this case no lower than a clear sky (0 Oktas) and no higher than full sky cover (8 Oktas). The case of a negative (positive) change factor means a reduction (an increase) in all cloud cover measurements but any observation of 0 (8) Oktas would remain unchanged. Hence the morphed time series would not preserve the climate change anomaly.

Given the shortcomings of the morphing method there was a need to propose a new methodology which maintains the underlying climate projections.

Bounded weighted stretch morphing algorithms

In this section the details of the revised algorithms that were used for CIBSE TM49 are described

(Hacker, 2014, *pers. comm.*) as well as the required mathematical proofs.

The problems identified in the previous section can be characterised as the need to preserve the physical and natural limits of some weather variables or there is a need to preserve additional features of the distribution of the transformed time series such as the change in the average daily maximum temperature. This imposes an upper and lower bound to the transformation which means the morphing procedure must preserve these conditions. For a normalised input bounded between 0 and 1:

1. If $x=0$, then $x'=0$
2. If $x=1$, then $x'=1$
3. $\tilde{x}' = \tilde{x} + \Delta x$

where \tilde{x} is the monthly average value of the variable.

A transfer function (g) which can be applied is symmetric and takes the form:

$$g = x^m(1-x)^n, \quad (7)$$

where m and n are coefficients. The simplest version of the transfer function is symmetric and $m = n = 1$. The transformed time series can then be defined as

$$x' = x + \frac{S\tilde{x}g}{\tilde{g}} \quad (8)$$

where S is the scaling factor. For cloud cover, the value of S would simply be the change factor anomaly. In the case of UKCP18 for short wave radiation this would be of the form $\frac{\text{mean}(x_{SDS}) + \Delta SDS}{\text{mean}(x_{SDS})} - 1$ and x would be the global horizontal radiation normalised between 0 and 1. Considering the limits of the inputs x . When $x=0$, $g=0$, and therefore $x'=0$. When $x=1$, $g=0$, and therefore $x'=1$. Thus, the physical limits of the weather variable would be conserved. The output must be converted back to the absolute value. In the case of cloud cover this would mean multiplying the output from equation (8) by 8. The overall transformation is a weighted stretch algorithm that imposes an upper and lower bound on the resulting morphed variable. This will be called a 'bounded weighted stretch' (BWS). The application

of the bounded weighted stretch algorithm will maintain the physical bounds of the weather variable. For example, in the case of cloud cover and solar radiation, it will retain clear skies and completely cloudy days whilst morphing the partially cloudy days.

For temperature, the scaling factor would need to include information about the change in the average daily maximum temperature, and the change in the average minimum temperature as well as the change in mean temperature. The input daily temperature time series (T) should be normalised between 0 and 1. This can be achieved by applying:

$$x = \frac{T - \min(T)}{\max(T) - \min(T)} \quad (9)$$

where $\min(T)$ is the daily minimum temperature and $\max(T)$ is the daily maximum temperature. The transformed monthly mean, minimum and maximum temperatures must be preserved so must respectively be defined by

$$\tilde{T}'_{mean} = \tilde{T} + \Delta T_{tas}, \quad (10)$$

$$\tilde{T}'_{min} = \tilde{T}_{min} + \Delta T_{tasmin}, \quad (11)$$

$$\tilde{T}'_{max} = \tilde{T}_{max} + \Delta T_{tasmax}. \quad (12)$$

To get the transformed temperature series, the output from equation (8) must be combined with equations (10) and (11) to maintain the physical change in the daily maximum and minimum temperatures:

$$T' = \tilde{T}'_{min} + x'(\tilde{T}'_{max} - \tilde{T}'_{min}) \quad (13)$$

Again, by observation, when the input is equal to the daily minimum temperature, the value of $x=0$, thus $T' = \tilde{T}'_{dbt,min}$. When the input is equal to the daily maximum temperature, the value of $x=1$, and thus $T' = \tilde{T}'_{dbt,max}$. Thus, preserving two of the temperature change factors. The value of S can be evaluated by taking the sum over all possible values of equations (8) and (9):

$$\sum_n x'_i = (1 + S) \sum_n \frac{(T_i - \min(T))}{(\max(T) - \min(T))} \quad (14)$$

Likewise, taking the sum of equation (13) over all possible values gives the equation:

$$\sum_n T'_i = n\tilde{T}'_{min} + \sum_n x'_i (\tilde{T}'_{max} - \tilde{T}'_{min}) \quad (15)$$

Since $\sum_n T'_i = n\tilde{T}'$, $\sum_n T_i = n\tilde{T}$ and substituting in equation (14) into equation (15), the value of S must be given by:

$$S = \frac{(\tilde{T}'_{mean} - \tilde{T}'_{min})}{(\tilde{T}'_{max} - \tilde{T}'_{min})} \frac{(\max(T) - \min(T))}{(mean(T) - \min(T))} - 1 \quad (16)$$

It can be shown that taking the average value of equation (13) and substituting in the values for S from equation (15), and $\sum_n x'_i$ from equation (14), that the third condition as described by equation (12) is also conserved. Therefore, in this formulation the change in the mean temperature, daily maximum temperature and daily minimum temperature are all conserved. This version will be called the 'Bounded Temperature Weighted Stretch' (BTWS) and will be applied on a day-to-day basis. On a given day, it is possible that the process would create an unphysical change in the morphed temperature. For example, a small or negative change in the mean temperature with a large positive change in the mean daily minimum temperature. In these cases, there are two possibilities. It is possible to preserve the change in the mean temperature applying equation (1) or to preserve the change in diurnal cycle applying equation (13) with x' equal to x . Climate change is most often described in terms of changes in the mean temperature so that is the aspect that will be preserved in these cases. Likewise, there is also a possibility for certain values of S such that the transformed value of T can be out of the range $0 - 1$. Where $S < 0$, smaller values of x can be transformed to be less than 0 and where $S > 0$, larger values of x can be transformed to be greater than 1. If m in equation (7) is small, the change is largest for lower values of x and if n is small, the change is largest for higher values of x .

Reducing the values of n and m can weight the change towards higher and lower values of x . The largest value of m or n will be used which ensure all points are in the range $0 - 1$. If this fails to find a solution, only a shift in the mean temperature will be applied.

Application of morphing algorithms to real weather data

The purpose of using a morphing algorithm is to generate future weather data which is representative of the projections of climate change. In this work the exact nature of the climate change projections is not that important since here it is only necessary to prove the effectiveness of the bounded weighted stretch algorithm compared to the original method. The baseline for UKCP18's probabilistic projections are from 1961–1990, 1981–2000 and 1981–2010. A climate norm is usually considered as a 30-year period therefore the baseline of the projections will be from the period 1981–2010. All climate change projections from the RCP8.5 scenario for the period 2071–2100 (or 2080 s) so the widest range of climate change projections (or change factors) are used in the analysis. At each period, 3000 samples, or probabilistic projections are available, and all 3000 will be tested here. The projections are shown in Figure 1 for February and Figure 2 for August. The change factors for mean temperature (ΔT) are ordered from smallest to largest in (a), with the coincident change in maximum temperature (ΔT_{max}) in (b). The change in minimum temperature is very similar to that shown in (b) so not shown. (c) shows the projected change in short wave radiation sorted from smallest to largest. The change in the average temperature in February is between -1.8 and 8.2°C whereas the change in maximum temperature is between -2.0 and 9.5°C . Short wave radiation is expected to change between -13.3 and 8.2 Wm^{-2} . The range of the climate change anomalies is much wider in August. The change in average temperature in August is expected to be between -2.0 and 13.4°C and the change in maximum temperature is between -2.2 and 16.3°C . Short wave radiation is expected to change between -41 and 90 Wm^{-2} .

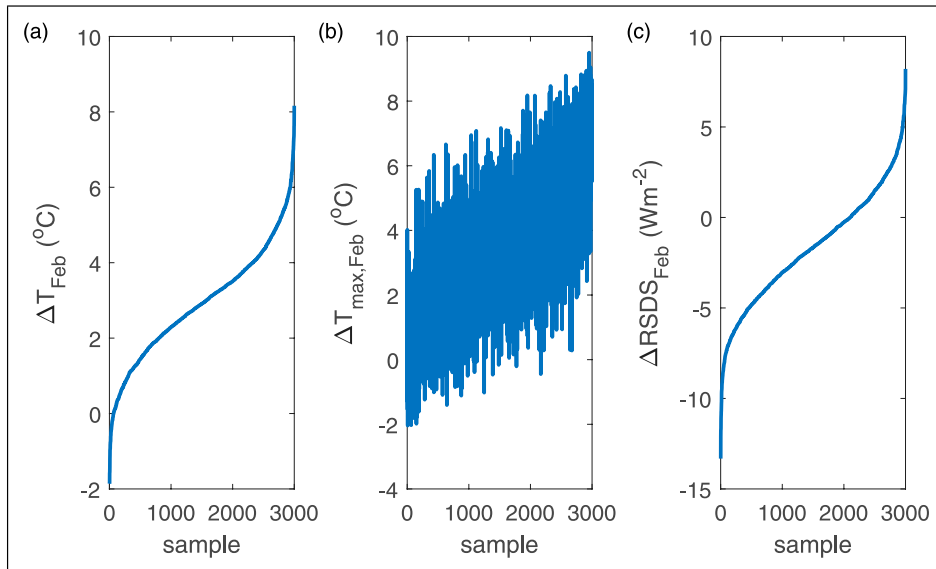


Figure 1. UKCPI8 change factors for the 2080 s in February.

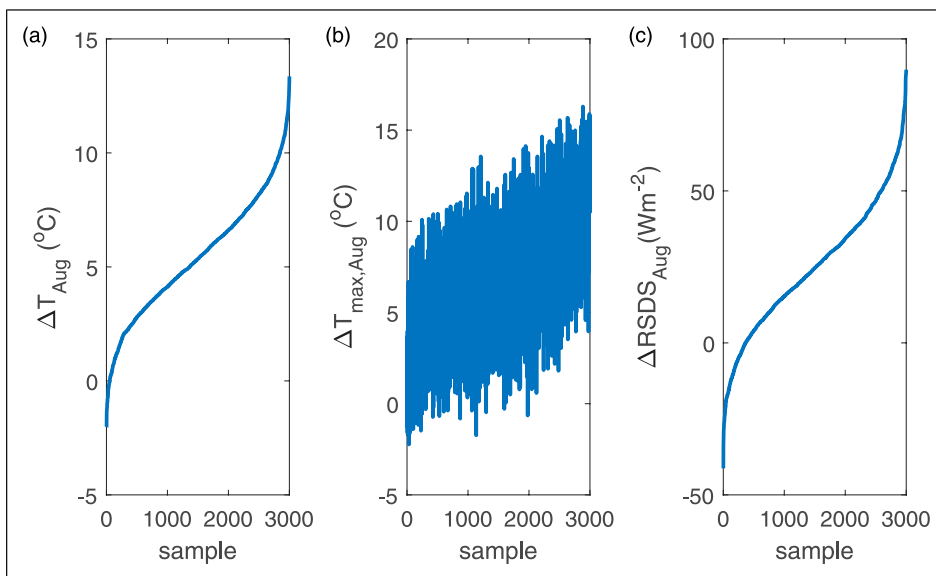


Figure 2. UKCPI8 change factors for the 2080 s in August.

Weather observations from London Heathrow (Latitude 51.479 N, Longitude -0.449 E, WMO station ID:03772) will be considered as this will contain a range of very hot and cold weather over the time series whilst

the observations from Heathrow at this location are mostly complete for example only 0.12% of the temperature data is missing.²⁰ Missing data will be interpolated using standard methods.¹ Building performance

analysis is usually evaluated using a representative year. For heating energy, a TRY would be used so a TRY will be created using the same 1981–2010 baseline and methods used to create the current UK industry standard TRYs¹ to which the morphing algorithms will then be applied. Like most locations around the world, solar radiation is not recorded at this weather station. While measurements from satellites are available from 2004, this would only give 7 years of data. For consistency solar radiation will be recreated using the Meteorological Radiation Model.²¹

The morphing algorithms will be applied following the original procedures and the bounded weighted stretch algorithms as appropriate. Here we are interested in the key differences between the morphing algorithms beyond the application of the change factors since the suitability has already been shown. From the deductions in section 4 the change factors will be realized in the morphed weather series using the bounded weighted stretch algorithm. This is also mostly true for the original algorithms. For example, when using Belcher's method to morph the temperature, the mean of the future weather series will be equal to the mean of the original series plus the change factor. However, i.e. not true for the change in daily maximum and daily minimum temperatures. Also, the impact on the absolute maximum and minimum temperature is not certain given it is also a function of the change in mean temperature. The comparisons will take the form:

1. The difference between the expected change factor and the achieved change factor for the maximum daily and minimum daily temperature using the combined simple stretch and shift for all 3000 UKCP18 samples.
2. The difference between the monthly absolute maximum and minimum temperatures using the bounded temperature weighted stretch and the combined simple stretch and shift for all 3000 UKCP18 samples.
3. The change in the global radiation using the bounded weighted stretch and the simple stretch algorithms.

The external temperature is the key weather variable for considering how much heating and

cooling energy may be required to maintain thermal comfort within a building. The heating and cooling degree days are a simple measure of how hot or cold a year and are highly correlated to the expected heating and cooling loads. The degree days are computed from counting the hours where a threshold has been exceeded and then dividing by 24 to convert it to hours. Heating degree days will be calculated with a threshold of 10°C and 18.3°C and the cooling degree days with a threshold of 23.3°C and 26.7°C corresponding with those as presented in ASHRAE handbook fundamentals.²² Solar radiation is often a key factor in determining cooling loads hence it is also included in the comparison.

In all cases only individual months and weather variables will be considered as it is beyond the scope of this paper to consider the impact of the selection of climate change scenarios and joint probabilities of coincident weather variables.

Finally, the impact of the two algorithms across all weather variables will be demonstrated through building simulation using all 3000 samples from UKCP18 using EnergyPlus. The building considered here is a large two-story house constantly used by four people with a total conditioned area of 164 m² sat mostly above a 130 m² unconditioned garage. It is orientated north-south with a rectangular form. The house is intended to represent a high-performance building with a current heating requirement of 15 kWhm⁻² with a thermostat of 20°C. The house is simplified with all rooms combined into a single zone. The U-values of the wall, roof and floor of the conditioned zones are equal to 0.12 Wm⁻²K⁻¹, 0.21 Wm⁻²K⁻¹, 0.20 Wm⁻²K⁻¹ respectively. There are 54 m² of windows, 50% are orientated to the South and 40% north, with a U-value of 1.35 Wm⁻²K⁻¹. The infiltration is set at 0.1 ACH. For simplicity the space is maintained at a constant 20°C all year round using an ideal loads system with the differences in heating and cooling energy (as a proxy for thermal discomfort) explaining the differences in the different morphing approaches.

Results and discussion

Figure 3 shows the actual change factor from applying the Belcher et al. algorithm in comparison to

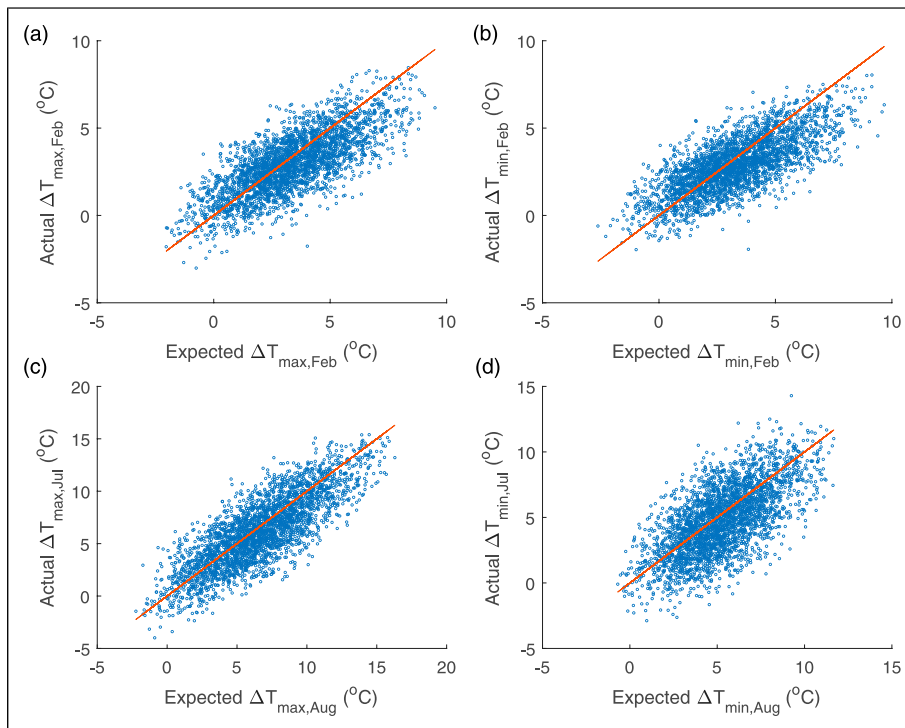


Figure 3. A comparison of the expected change factor (UKCP18 projection) against the actual change factor using the Belcher algorithm for average daily maximum and average daily minimum temperature for February and August. The straight lines are what would be expected with a perfect fit.

the expected change factor as obtained from UKCP18. There is no clear trend with the change factors scattered around the expected change factor (marked by the solid line). Only 10% are within 0.2°C of the expected value. The average difference is around 1.1°C for February and 1.7°C for August. Figure 4 shows the same comparison using the BTWS algorithm. 50% of all points sit on the expected line and in total 70% of the values are within 0.2°C . The average difference is around 0.4°C for February and 0.3°C for August. Small deviations from the expected values are where the application of the change factors on a small number of day results in an unphysical relationship where the morphed minimum (maximum) temperature is larger (smaller) than the morphed mean temperature. In these cases, only the change in the mean on that day is applied which in turn affects the overall distribution that month. Larger differences are where the change

factors mostly result in unphysical changes across the month.

Figure 5 shows the heating degree days in February and the cooling degree days in August against the difference in the projected change in daily maximum and minimum temperatures for all 3000 climate projections from the chosen climate scenario. If the two morphing algorithms give a similar temperature distribution, then the outcome will be a small cluster around 0. Where the change in maximum temperature is greater than the expected change in minimum temperature, the Belcher algorithm gives more heating degree days and more cooling degree days. The exception is for a base temperature of 18.3°C where both algorithms give a similar number of heating degree days where the change in minimum temperature is larger than the change in maximum temperature.

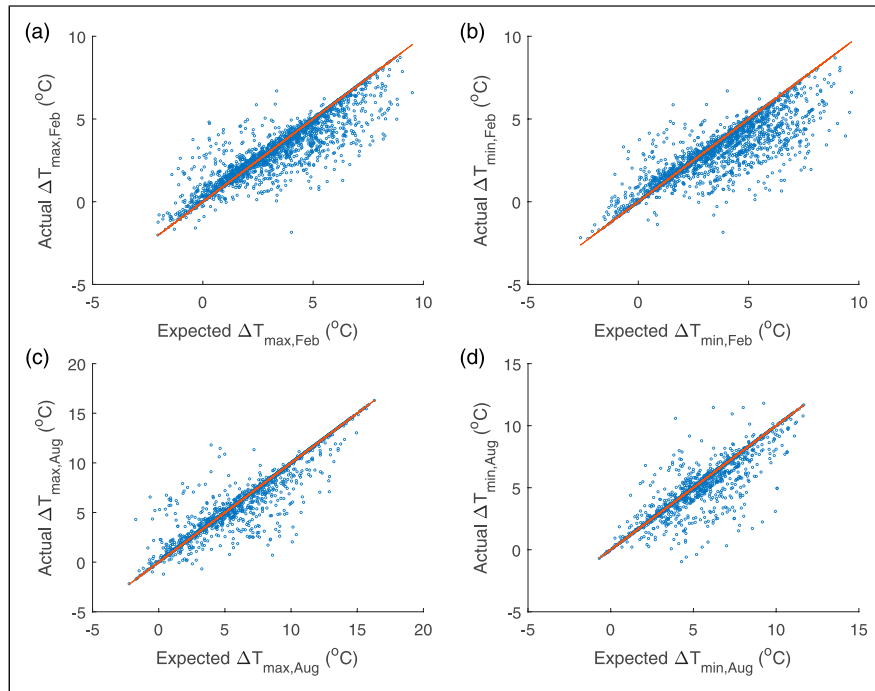


Figure 4. A comparison of the expected change factor (UKCPI8 projection) against the actual change factor from using the BTWS algorithm for average daily maximum and average daily minimum temperature for February and August. The straight lines are what would be expected with a perfect fit.

Across all samples, the average difference between the two algorithms for heating degree days is 1.2°Days with a base temperature of 10°C and 0.2°Days with a base temperature of 18.3°C. For cooling degree days, the average difference is 2.1°Days with a base temperature of 23.3°C and 1.3°Days for a base temperature of 26.6°C. The standard deviation is much larger at around 7°Days for all except for heating degree days with a base temperature of 18.3°C where the standard deviation of the difference is 0.8°Days showing the variability and dependence on the applied change factors.

The differences found in Figure 5 are simply a result of the application of the two transformations. For example, Figure 6(a) shows the morphed February temperature considering $\Delta T_{tas} = 2.15$ °C, $\Delta T_{tasmin} = 2.9$ °C and $\Delta T_{tasmax} = 1.44$ °C and 6(b) the August morphed temperature considering $\Delta T_{tas} = 3$ °C, $\Delta T_{tasmin} = 4$ °C and $\Delta T_{tasmax} = 9$ °C using both the Belcher and BTWS

algorithms. In Figure 6(a) the Belcher algorithm slightly under predicts the change in temperature ($\Delta T_{tasmin} = 1.43$ °C and $\Delta T_{tasmax} = 2.89$ °C) but it is clear to see that the Belcher algorithm produces less extreme temperatures (lower maximum and higher minimum temperatures). As a result, the Belcher algorithm will give fewer heating degree days when the base line is low (e.g. 10 °C). In the case of a base temperature above 14.5 °C, the difference will be 0; the mean temperature of both series is the same and all temperatures are then less than the baseline temperature, so the number of heating degree days becomes independent of the morphing algorithm.

In Figure 6(b) the Belcher algorithm under predicts the change in minimum and maximum temperatures by a larger margin ($\Delta T_{tasmin} = 0.65$ °C and $\Delta T_{tasmax} = 5.65$ °C). The peak temperatures are very similar (36 °C for the BTWS algorithm compared to 35.2 °C for the Belcher Algorithm, but

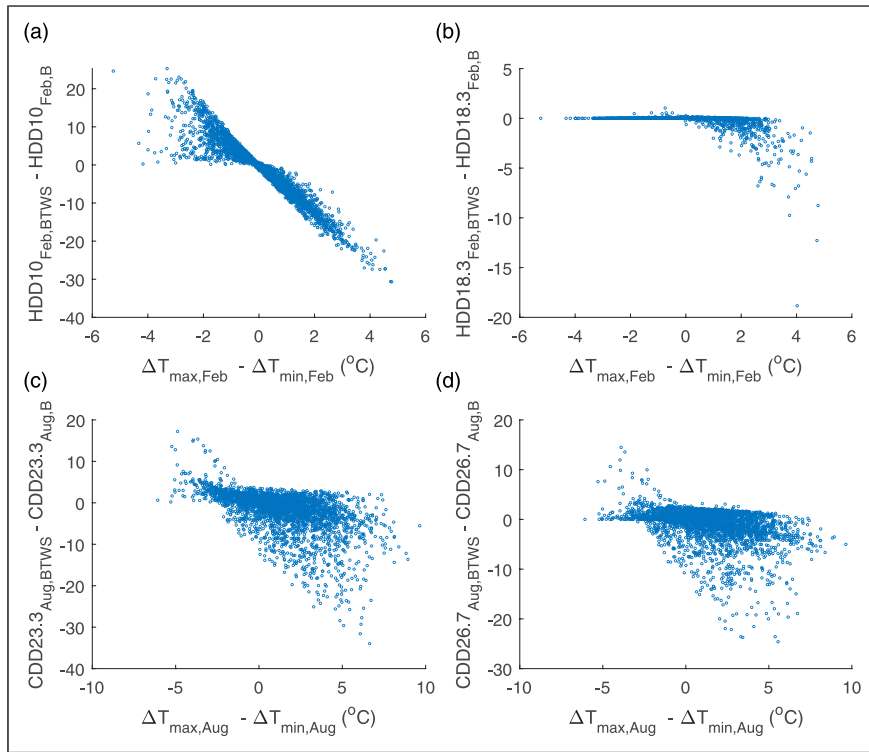


Figure 5. Comparison of (a) heating degree days at 10°C in February and (b) heating degree days at 18.3°C (c) cooling degree days at 23.3°C in August and (d) cooling degree days at 26.6°C in August against the difference between the projected change in maximum and minimum temperature in the same month using either the BTWS algorithm and Belcher algorithms.

the minimum temperature is much higher for the BTWS algorithm (14.4 °C for the BTWS algorithm compared to 8.8 °C for the Belcher Algorithm). Since the BTWS algorithm maintains the change in mean, daily minimum and maximum temperatures, the temperatures above the mean are slightly lower than the Belcher algorithm and as such the cooling degree hours are lower for the BTWS algorithm for all base line temperatures up to around 27°C. The highest temperatures are highest for the BTWS algorithm to preserve the change in daily maximum temperatures.

The biggest difference between the two algorithms is the ability to preserve the change in the daily average minimum temperatures and daily average maximum temperature but as found in Figure 3, that is rarely the case for the Belcher algorithm.

As expected, morphing the solar radiation results in an identical change in the amount of solar radiation for both algorithms. i.e. if the change factor suggests a five Wm^{-2} then both algorithms result in an increase of five Wm^{-2} . Because the change in the mean is also preserved, the total solar radiation is also identical. Figure 7 shows the maximum monthly solar radiation using both morphing algorithms. The peak in the solar radiation for the BWS algorithm is identical to the original weather file while for the Belcher, simply reflects the distribution of the change factors. Most change factors suggest the solar radiation will increase in the summer months, but the picture is more mixed in the winter. In extreme cases, the maximum global horizontal radiation is greater than 90% of extra-terrestrial solar radiation for that hour (June and July). This implies that the application of the Belcher algorithm alone is not

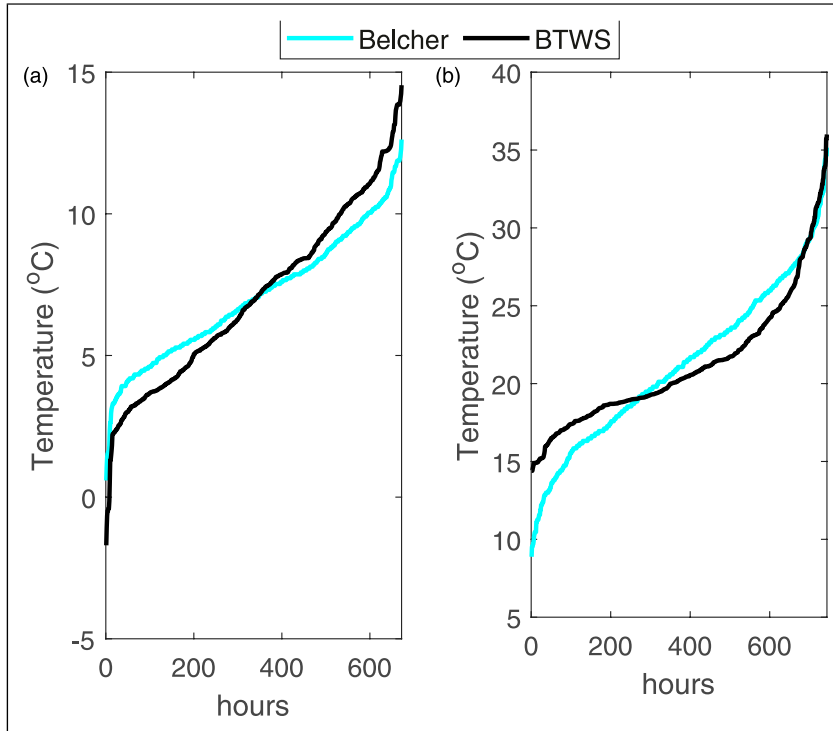


Figure 6. Example morphed temperatures using the Belcher and BTWS algorithms in (a) February with $\Delta T_{tas} = 2.2$ °C, $\Delta T_{tasmin} = 1.4$ °C and $\Delta T_{tasmax} = 2.9$ °C (b) August where $\Delta T_{tas} = 3$ °C, $\Delta T_{tasmin} = 9$ °C and $\Delta T_{tasmax} = 4$ °C.

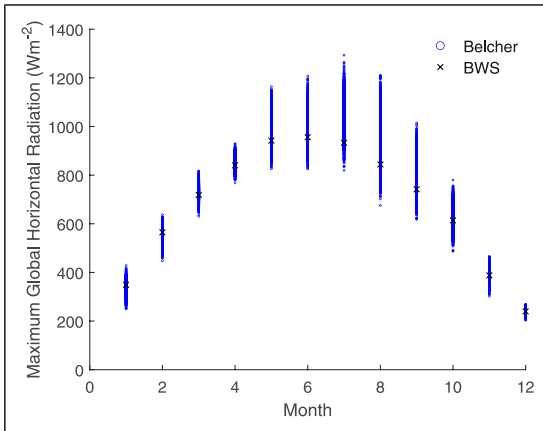


Figure 7. Maximum monthly global horizontal radiation using the Belcher and BWS algorithms.

appropriate and further post processing would be required to ensure the output is physically consistent with what is possible.

Figure 8 shows a comparison of the Belcher and BWS algorithms applied to August with a change factor of -40% (8a) and $+90\%$ (8b) which represents the full range of change found in the UKCP18 projections for the month of August. The WS algorithm maintains the peak from the original weather file in both cases whereas the Belcher algorithm morphs all values by the same percentage. Where the change factor is positive (8b) less sunny days are in effect made sunnier. If the change factor is negative, less sunny days are made less sunny, but the peak remains – the day with the greatest sunshine will still have a large solar radiation value. The largest increases and decreases are found around the mean which is a direct result of the transfer function used as expected. This would mean that on cloudless days in the summer, maximum solar radiation would be expected regardless of the change factor. Simply the weather data within the file should be physically consistent. In the case of a negative change factor this would not be the

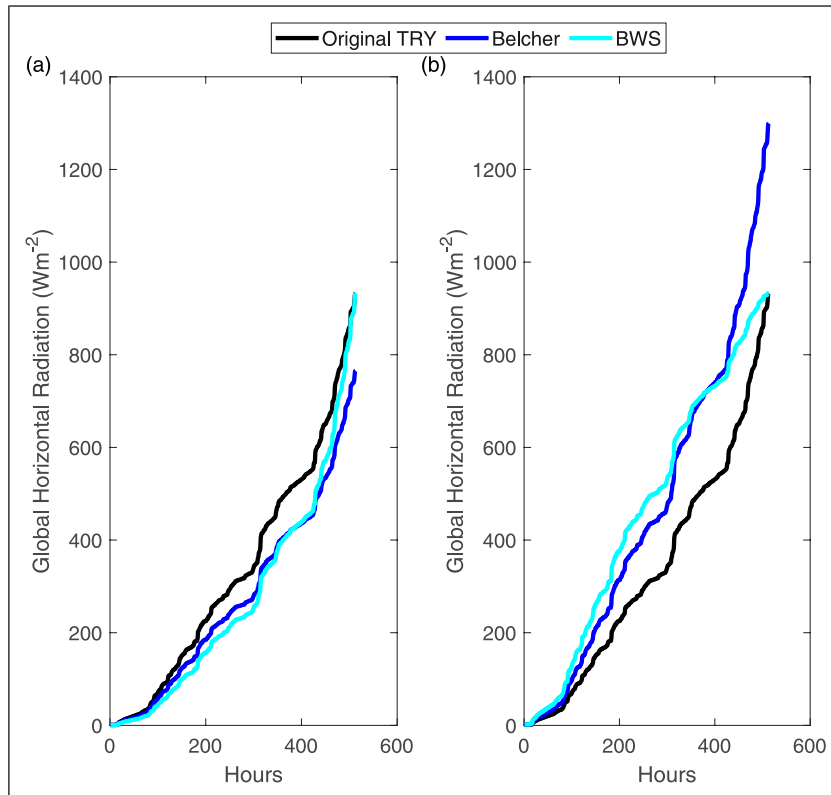


Figure 8. A comparison of the distribution of the WS and Belcher algorithms applied to global horizontal radiation with a change factor of (a) -40% and (b) $+90\%$. All zeros have been excluded.

case for the Belcher algorithm and in the case a positive change factor, the peak would be much larger than expected and larger than is physically possible.

The changes in cooling degree days and solar radiation suggest that there would be an impact on building design and potential adaptations to deal with the impacts of climate change, but the combined impact of these variables has not been tested. Here all 3000 samples are used with both algorithms to compare the differences in heating and cooling energy. In the next two figures, all results will be displayed as the result using the weighted stretch algorithms subtracted from the result of using the Belcher algorithm. A positive value therefore suggests the Belcher algorithm predicts a larger total. [Figure 9](#) shows the difference between the simulated total heating energy (9a) and the simulated total cooling energy (9b) using the Belcher and various

weighted stretch algorithms. The mean difference in total heating energy is -112 kWh while the mean difference in cooling energy is 1310 kWh. The Blecher algorithm predicts heating energy will change between 95% reduction to 26% increase whereas the weighted stretch algorithms predict between 95% reduction and 32% increase across all samples. For cooling the Belcher algorithm predicts between 8% reduction to a 275% increase compared to between an 8% reduction and 253% increase for the weighted stretch algorithm. In the case of heating, there can be larger differences where increased temperature differences and reduced solar gains for example can combine to increase the temperature difference and thus heating energy requirement. But this can go both ways, with significant differences between the algorithms at the extremes. For cooling, the weighted stretch algorithm consistently predicts a

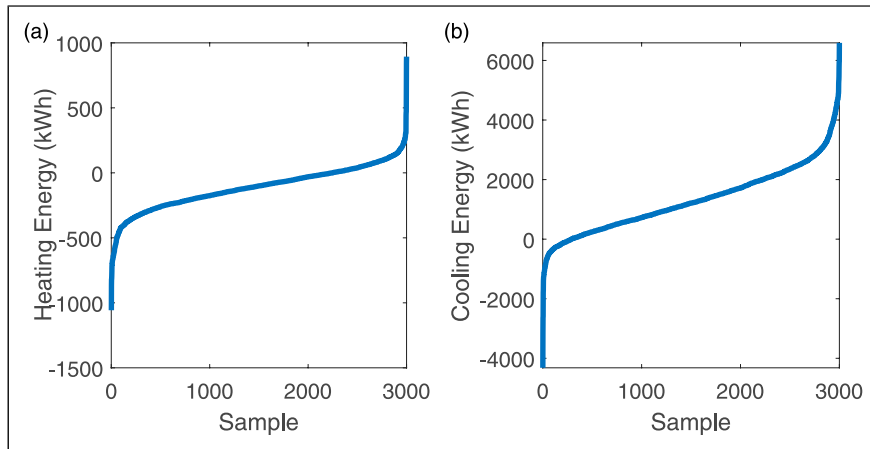


Figure 9. A comparison of the distribution of (a) the yearly total heating energy (b) the yearly total cooling energy from using the Belcher and WS algorithms on a complete weather file using building performance simulation. The data is presented as the result from WS algorithms subtracted from the Belcher algorithm for all climate change anomalies from UKCPI8. A positive number means the energy derived from the Belcher algorithm results in a larger energy requirement.

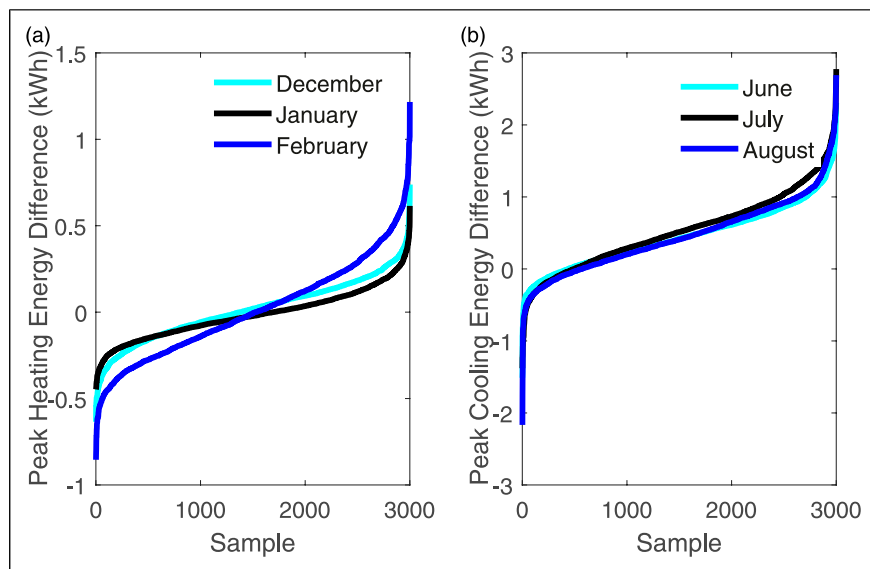


Figure 10. A comparison of the distribution of (a) the peak heating energy in the winter months and (b) the peak cooling energy in the summer months from using the Belcher and WS algorithms on a complete weather file using building performance simulation. The data is presented as the result from WS algorithms subtracted from the Belcher algorithm for all climate change anomalies from UKCPI8. A positive number means the energy derived from the Belcher algorithm is results in a larger peak load.

reduced cooling demand suggesting that the Belcher algorithm predicts higher solar gains and/or higher temperatures leading to higher indoor temperatures.

Finally Figure 10 shows the difference in the peak hourly heating energy (10a) for December, January and February and peak cooling energy (10b) for June, July and August. This shows the impact of different weather patterns in each month combined with the application of different climate change anomalies. The same patterns from Figure 9 are repeated here with peak cooling energy typically higher with a mean of 0.5 kWh larger and the maximum difference up to 2.7 kWh. The peak heating energy can be as large as 1.2 kWh, but the average is around 0.

This suggests that while changes in the total energy clearly depend on the month and the climate change anomalies applied, the choice of algorithm would impact the ability to meet a benchmark energy performance such as meeting the Passivhaus requirement for total space conditioning as well as impacting on plant sizing.

Conclusions

In this work a set of revised morphing algorithms have been described and these have been shown to improve upon the shortcomings of the algorithms proposed by Belcher et al. Namely, (1) the ability to preserve changes in the mean, daily average maximum and daily average minimum temperatures and (2) the ability to preserve physical limits in the transformed weather series. These revised algorithms are (1) A weighted stretch which can be applied to any weather variable where only one change factor is known and (2) A bounded temperature weighted stretch which is applied to the dry bulb temperature where three change factors are typically available to describe the changes due to climate change. The revised algorithms have been shown to outperform the original methods in terms of maintaining the temperature change factors in the morphed weather data. When the original morphing method is applied to solar radiation this could create a peak value that was unrealistic in terms of consistency with the underlying weather – much less than expected or much greater than expected on a cloudless sky – which is impossible with the revised method.

While the revised method leads to changes in the resultant weather variables, it is also found that using the revised morphing algorithms results in changes in the indoor environment when used to create a future weather file combined with building performance simulation and thus different design decision would be made. The simulations carried out here suggests that the new weighted stretch algorithms would result in reduced heating energy on average for the same climate change prediction/climate change anomalies as well as reduced cooling energy including the reduction in peak loads. This means that the revised algorithms would mean a direct impact on building design around provision of building services and the ability to maintain thermal comfort.

The selection of transfer function is pragmatic in ensuring that the transformed weather data was symmetric about the mean value. But it is not clear from this work whether this is the most appropriate choice. When morphing the temperature, the algorithm is adapted to become asymmetric for circumstances where the transformation results in values that go outside the physical bounds (where $x < 0$ or $x > 1$). But it is not known whether such an asymmetric transformation would be more appropriate in general. Furthermore, the transformation ensures that the maximum temperature on each day increases by the same amount. But the hottest temperatures are not going to increase in line with projected change in the daily average maximum temperature. The same would be true of the minimum temperatures. Although this is not going to be an issue when considering the impact on climate change on an average weather file such as a TMY or TRY which consist of average temperatures.

Authors' note

Ruth Shilston is now at Mott MacDonald

Declaration of conflicting interests

The author(s) declared no potential conflicts of interest with respect to the research, authorship, and/or publication of this article.

Funding

The author(s) disclosed receipt of the following financial support for the research, authorship, and/or publication of this article: This work was supported by the Innovate UK.

ORCID iD

Matthew E Eames  <https://orcid.org/0000-0002-0515-6878>

References

- Eames ME, Ramallo-Gonzalez AP and Wood MJ. *An update of the UK's test reference year: The implications of a revised climate on building design*, vol. 37. Building Services Engineering Research and Technology. 2015. DOI: [10.1177/0143624415605626](https://doi.org/10.1177/0143624415605626).
- DEVELOPMENT of typical year weather files for 59 INDIAN locations white box technologies, Moraga CA, United States of America Centre for Energy and Environment, MNIT, Jaipur; India Univac Environment Systems Pvt Ltd, Mumbai; Centre for IT in Buildi. pp. 3.
- Levermore GJ and Parkinson JB. Analyses and algorithms for new test reference years and design summer years for the UK. *Build Serv Eng Technol* 2006; 27: 311–325.
- Wilcox S and Marion W. *Users manual for TMY3 data sets users manual for TMY3 data sets*.
- Huang YJ, Su F, Seo D, et al. Development of 3012 IWEC2 weather files for international locations (RP-1477). *ASHRAE Trans* 2014; 120: 340–356.
- Eames M. *An update of the UK's design summer years: probabilistic design summer years for enhanced overheating risk analysis in building design*. Building Services Engineering Research and Technology.
- Lowe JA, Bernie D, Bett P, et al. *UKCP18 Science Overview report*, 2018, pp. 1–73.
- Vautard R, Van Aalst M, Boucher O, et al. Human contribution to the record-breaking June and July 2019 heatwaves in western Europe. *Environ Res Lett*; 15. 2020. DOI: [10.1088/1748-9326/aba3d4](https://doi.org/10.1088/1748-9326/aba3d4).
- Rousi E, Kornhuber K, Beobide-Arsuaga G, et al. Accelerated western European heatwave trends linked to more-persistent double jets over Eurasia. *Nat Commun* 2022; 13: 1–11.
- Climate Change 2023: Synthesis Report. *A report of the intergovernmental panel on climate change. Contribution of working groups I, II and III to the sixth assessment report of the intergovernmental panel on climate change*. 2023.
- Hacker JN, Belcher SE and Connell R. *Beating the heat: keeping UK building cool in a warming climate*. Oxford: UKCIP Briefing Report. UKCIP, 2005.
- Holmes M and Hacker J. Climate change, thermal comfort and energy: meeting the design challenges of the 21st century. *Energy Build* 2007; 39: 802–814.
- Hacker J, Capon R and Mylona A. *TM48: use of climate change scenarios for building simulation: the CIBSE future weather years*, 2009, <http://scholar.google.com/scholar?hl=en&btnG=Search&q=intitle:Use+of+climate+change+scenarios+for+building+simulation++the+CIBSE+future+weather+years#0>
- Belcher S, Hacker J and Powell D. Constructing design weather data for future climates. *Build Serv Eng Res Technol* 2005; 26: 49–61.
- Guan L. Preparation of future weather data to study the impact of climate change on buildings. *Build Environ* 2009; 44: 793–800.
- Rodrigues E, Fernandes MS and Carvalho D. Future weather generator for building performance research: an open-source morphing tool and an application. *Build Environ*; 233. 2023. DOI: [10.1016/j.buildenv.2023.110104](https://doi.org/10.1016/j.buildenv.2023.110104).
- Design summer years for London. TM49*, The Chartered Institution of Building Services Engineers.
- Virk D and Eames M. *CIBSE Weather Files 2016 release: Technical Briefing and Testing* https://www.cibse.org/getmedia/ce7a77e8-3f98-4b97-9dbc-7baf0062f6c6/WeatherData_TechnicalBriefingandTesting_Final.pdf.aspx 2016.
- Dickinson R and Brannon B. *Generating future weather files for RESILIENCE*.
- Met Office (2019): *Met office MIDAS open: UK land surface stations data (1853-current)*. Centre for Environmental Data Analysis. <http://catalogue.ceda.ac.uk/uuid/dbd451271eb04662beade68da43546e1>
- Modeling solar radiation at the earth's surface recent advances*.
- ASHRAE. *ASHRAE Handbook-Fundamentals Atlanta GA*. American Society of Heating Refrigerating and Air-Conditioning Engineers.