

Introducing a Localised Spatio-temporal LCI Method with wheat production as exploratory case study

Marina Maier¹, Markus Mueller, Xiaoyu Yan

*Environment and Sustainability Institute, University of Exeter, Penryn Campus Penryn,
TR10 9FE, Cornwall, UK*

Abstract

The use of dynamical information, which is temporally and spatially explicit, to quantify environmental impacts is gaining importance in recent years. Life Cycle Assessment has been applied to identify environmental impacts of, for example, wheat production. However, conventional Life Cycle Assessment is typically limited by its static nature and cannot explicitly consider temporal and spatial variability in its matrix-based mathematical structure. To address this limitation, a novel dynamical Life Cycle Assessment framework that applies spatio-temporal mathematical models in Life Cycle Inventory is introduced. This framework employs the existing Enhanced Structural Path Analysis (ESPA) method paired with a spatial dispersion model to determine the localised emissions over time within the Life Cycle Inventory. The spatially explicit calculations consider emissions to the surrounding area of an origin. A case study was undertaken to demonstrate the developed framework using the production of wheat at the Helford area in Cornwall, UK. Results show the spatio-temporal dispersion for four example emissions atmosphere, soil, flowing and groundwater. These outcomes show that it is possible to implement both spatial and temporal information in matrix-based LCI. We believe this framework could potentially transform the way LCA is currently performed, i.e., in a static and spatially-generic way and will offer significantly improved understanding of life cycle environmental impacts and better inform management of

¹mm566@exeter.ac.uk

processes such as agricultural production that have high spatial and temporal heterogeneity.

Keywords: Life Cycle Assessment, wheat, spatio-temporal model, environmental impacts, agriculture, Life Cycle Inventory.

1. Introduction

The relation between agriculture and climate change has become an important issue (Edwards-Jones et al., 2009). The food sector is one of the largest industries in the world and hence uses a large amount of energy and resources and contributes to global warming and total CO_2 emissions (Roy et al., 2009). The demand on food will drastically increase in the coming decades. Therefore, the pressure on food production and cultivation of land will rise, as well. At the same time, climate change will cause more challenges in the agricultural sector (van der Werf et al., 2014): Agriculture is supposed to meet the principles of sustainability, therefore, it is expected to produce a large amount of food to feed growing populations and at the same time ensure food security (Brentrup et al., 2004). Furthermore, one of the main concerns is the impacts of increasing input levels during the production of grain. These impacts include land use change and emissions through a higher demand for soil tillage, fertilisers, pesticides and irrigation. All these influence the level of greenhouse gases (GHG) released during agricultural production (Goglio et al., 2012). Hence, enhancing global food security while reducing emissions and environmental impact — two seemingly conflicting goals — requires a rigorous analysis of food production practices and technologies to develop more sustainable agriculture.

Accounting for approximately 30% of the global grain cultivation, wheat is one of the most important contributors to global food production (Röder et al., 2014). According to the FAO Food Prospects and Food situation report 70% of the wheat produced is for food production and the rest is used for other purposes such as animal feed. In 2014/15, a global wheat yield of 716 million tonnes is expected (FAO, 2014). Linqvist et al. (2001) calculated in their meta-analysis

of GHG Global Warming Potential (GWP) values of CH_4 and N_2O of 662kg $CO_2e/1t$ of wheat. Furthermore, they found 1.21% of N applied was emitted as N_2O (Linguist et al., 2012).

Life Cycle Assessment (LCA) is commonly used to evaluate the environmental impacts of different products, processes and activities. Assessments can consider the entire life cycle or a determined time interval of the life cycle (Edwards-Jones et al., 2009; Roy et al., 2009). A LCA can be performed to identify ways to reduce pollution, excessive use of resources and may stop the mitigation of environmental impacts between different production stages (McManus, 2010). Within a LCA environmental impacts such as climate change, stratospheric ozone depletion, smog eutrophication and acidification and influences on human health and ecosystems are analysed (Rebitzer et al., 2004). LCA can be seen as a comprehensive assessment which is standardised in ISO 14040 and includes all attributes of natural environment, human health and resources (Technical Committee ISO/TC 207, 2010). A life cycle approach is useful to avoid problems in the process from shifting from one stage, country or environmental problem to another (McManus, 2010). In recent years LCA has become an important decision support tool for policy makers as well as product developers and designers to assess the cradle to grave impacts of products. Three forces support the current position of LCA: Due to a movement from government regulations closer to "life-cycle accountability" point of view, manufacturers are responsible for direct product impacts, but also for impacts in life cycle stages after a product's purchase. Some businesses also take part in sustainable actions or schemes which demands "for continuous improvements through better environmental management systems" (Srinivas, 2014). And last for consumer markets and government procurement guidelines environmental performance of products has a high level of importance (Srinivas, 2014).

On the other hand, LCA is "primarily a steady-state-tool" that does not consider temporal or spatial information (Udo de Haes, 2006). These limitations impact on results from conventional LCA and many, in particular, environmental issues cannot be determined explicitly (Levasseur et al., 2010; Owens,

1997; Dyckhoff and Kasah, 2014). In recent years more studies include either temporally or spatially explicit information, and new methodologies for time-dependent LCA (Levasseur et al., 2010; Dyckhoff and Kasah, 2014; Commission, 60 2010) and spatial LCA (Geyer et al., 2010; Mutel and Hellweg, 2009) have been developed. To the best knowledge of the authors, however, no studies have been performed that include time- as well as space-dependent information in conventional matrix-based LCA. Hence the aim of the present study is to: integrate both, temporal and spatial information in a novel dynamical LCA framework 65 that is capable of producing more detailed results and hence offering more insights for sustainability assessment. We apply this new approach to evaluate the environmental burdens of wheat production as an illustration. The Dynamical Life Cycle Assessment (DLCA) sections summarises previous studies and current implementation of time and space in LCA. The calculation approach 70 used in our study is outlined in the Method section. The Case Study section introduces the used data, followed by the results. Conclusions for the study and also recommendations for implementing time and space information in future studies are drawn in the Conclusion section.

2. Dynamical Life Cycle Assessment

75 ISO 14042 mentions the absence of time in LCA, but at the same time does not provide a guideline for an inclusion of time in LCA (Technical Committee ISO/TC 207, 2010) and previous studies explore different ways in doing so. Broadly, it differs between time included in the Life Cycle Inventory (LCI) and in the Life Cycle Impact Assessment (LCIA) stage of a LCA. According to Collet 80 et al. (2011) the temporal information of emissions is lost by aggregation and the ensuing concentrations of emissions in the air are unknown. On the other hand, time in LCIA is only considered as timescales to gain information about the emissions that influence the environmental impacts (Collet et al., 2011). Dyckhoff and Kasah (2014)) define DLCA as an useful tool to “assesses the 85 impacts of a system at a determined point in time.

Pehnt (2006); Zhai and Williams (2010) and Viebahn et al. (2011) perform dynamical studies in the renewable energy sector and assessed future greenhouse gas (GHG) emissions by past and potential developments of material and operation methods to improve efficiency of production. Zhai and Williams
90 (2010) perform a LCA of photovoltaic (PV) systems and consider technology-dependent dynamics of embodied energy and GHG emissions. The study focusses on energy-related flows, but with some improvement of the model other impact categories could be included. Zhai and Williams (2010) conclude that the environmental processes have a significant effect on reducing emissions of
95 PV systems.

Pehnt (2006) introduces in his paper a dynamic approach towards LCA of renewable energy systems. For his dynamical approach, he develops a background system with the state of the best available technology and uses extrapolation of future developments to calculate the emissions for energy resource consumption, emissions of GHGs, acidification and eutrophication. Within his DLCA he
100 includes only parameters, that are environmentally significant and at the same time exhibit an important time-dependency.

Viebahn et al. (2011) perform a study about concentrated solar power (CSP) by using a dynamical LCI approach. Within the LCI the environmental impacts
105 between 2007-2050 were calculated considering six development steps such as increase of lifetime, up-scaling, increase of storage time, higher efficiency, reduction of material use and adapting background processes. The development scenarios were assumed to follow a pessimistic, an optimistic-realistic and a very optimistic trend. The study shows that CSP can be deployed in the long-term,
110 depending on the development of energy policy. Furthermore, the emissions from CSP plants are relatively low in comparison with fossil fuel-based systems, and further reductions of emissions are possible and likely to happen in the future.

In a more recent study, Beloin-Saint-Pierre et al. (2014) develop a calculation
115 tool that uses temporal information to describe a system by differentiating elementary and process flows. The authors modify the traditional LCI calculation

method to be able to consider time dependent information. This new method is called Enhanced Structural Path Analysis (ESPA) Beloin-Saint-Pierre et al. (2014). Beloin-Saint-Pierre et al. (2014) compare different LCA studies and
120 found that results obtained, considering evolving process flows over time, differ from those obtained by more traditional approaches in LCA. Also including time variance indicated an effect of industrial dynamics on DLCA results. In their comparison of different DLCA studies they also found that most approaches used in these studies did not clearly “differentiate at a temporal level”.

125 Porsö and Hansson (2014) describe time-dependent absolute and instantaneous indicators to calculate the global mean surface temperature.

In 2005, Spatari et al. (2005) used a dynamical model with an annual time series for production steps, an empirical model to calculate waste flows and a residence-time model to determine post-costumer flows of the copper production
130 in North America.

A different approach has been proposed by Levasseur et al. (2010), see also Kendall et al. (2009); Kendall (2012) and Yang and Chen (2014) with time dependent characterisation of global warming factors and the timing of fixed time horizons, which applies in the LCIA. Levasseur et al. (2010), improve the
135 results of LCA “by addressing the inconsistency of temporal assessment” (Levasseur et al., 2010) and by including time dependent characterisation factor in the LCI stage. The results of the study show that a chosen time horizon creates inconsistency with time range, which the LCA covers. Nevertheless, using this method for a case study of biofuels revealed differences in the results of a statical
140 approach and a DLCA that are significant enough to change the conclusion of the entire study.

In another recent study by Dyckhoff and Kasah (2014), the time-dependent global warming impact using radiative forcing and a new method to define time horizons was developed. They indicate that the accuracy of DLCA stud-
145 ies depends on chosen time horizons. Therefore, they develop instantaneous and cumulative time dominance criteria. This study was based on the work of Levasseur at al. (2010), which has been, according to Dyckhoff and Kasah

(2014), the most elaborated work within the DLCA field so far. But the same time they criticise time horizons as “highly subjective assumptions” without
150 scientific foundations and in addition an “implicit weighting of emissions” takes place. To improve these factors the authors introduced their concept of time dominance regarding the study of (Levasseur et al., 2010) (Dyckhoff and Kasah, 2014).

Bright et al. (2012) performed a study on climate impacts of bioenergy. They
155 consider “two dynamic issues, first the temporary changes to the terrestrial carbon changes and second temporary changes to land surface albedo” Bright et al. (2012) in the context of active land use management for bioenergy. Hellweg et al. (2003) see LCA as a tool that treats past, presence and future emissions, divided into equal sections and integrated over time, but Bright et al. (2012)
160 criticise the limitation of this method applied on biomass systems. They use the neglect of CO_2 emissions from biomass conversion or combustion due to “the carbon and climate neutrality principle”. According to the authors, this principle is acceptable for fast growing biomass, but is less feasible for slow growing biomass (Bright et al., 2012). As the study of (Levasseur et al., 2010), Bright
165 et al. (2012) calculate GWP indices. In contrast to Levasseur’s approach, Bright et al. (2012) apply the carbon radiative forcing within the LCIA stage. Furthermore, they use Impulse Response Functions combined with the time distributed emissions and removals of CO_2 from biomass to calculate the change in atmospheric CO_2 concentrations. As (Levasseur et al., 2010), (Bright et al., 2012)
170 and Arbault et al. (2014) calculate Characterisation Factors (CFs) using Impact Assessment Models. The CFs used in their study are related to Human Health, Natural Resources and Natural Environment. The authors point out that CFs and LCIA indicators evolve “with regard to the usefulness of natural resources for human purposes” Arbault et al. (2014). The incomplete involve-
175 ment of ecosystem services (ES) in the current LCIA application represents a notable limitation of LCA to several sectors, which are influenced by the ES. This study uses integrated earth systems dynamic modelling to solve this issue. Furthermore, a Global Unified Metamodel of the biosphere is selected and CFs

are calculated. Although the model indicates the possibility to retrieve CFs, a
180 simple conversion into LCIA calculations is not functional so far Arbault et al.
(2014).

Another study calculating CFs in LCIA was undertaken by Seppälä et al.
(2006). The study develops new site-dependent characterisation factors for
emissions occurring during acidification and eutrophication in Europe. The cal-
185 culation of the CFs has been based on accumulated exceedance (AE). The cal-
culation method was introduced by the United Nations Economic Commission
for Europe Convention on Longrange Transboundary Air pollution (UNECE,
2014). Seppälä et al. (2006) found that the CFs were independent of the reduc-
tion percentage that was normally used to calculate CFs. Because the errors
190 calculated for each CF turned out to be 0, the CFs were unable to describe ef-
fects of small changes of most emissions included in LCA. Also their study shows
significant differences in CFs calculated for many countries in the EU Seppälä
et al. (2006).

Another important issue with Life Cycle Assessments is lack of spatial in-
195 formation. Spatial LCA can be applied in every stage of the life cycle. If it
is applied in LCI usually GIS and spatial databases are used, while in LCI a
CF is developed (Nitschelma et al., 2015). Typically, to receive localised LCA
results, this is often performed at country scale, with little information where
emissions arise within the country. Also, localised CFs are used. The use of
200 those CFs is described in two methods, that were developed in the past two
decades. The TRACI model was proposed by the U.S. Environmental Pro-
tection Agency, and includes acidification CFs for each U.S. state and for the
country as a whole (Bare et al., 2003). The other method developed is called
GLOBOX and includes around 250 countries and seas (Wegener Sleeswijk and
205 Heijungs, 2010). But so far no method was developed that regionalises LCI. Ear-
lier attempts are based on using regional output percentages (ROP) to allocate
life cycle emissions to different regions (Hill et al., 2009; Tessum et al., 2014). In
his study Hill analyses the impacts of PM2.5 emissions of corn ethanol, gasoline
and cellulosic ethanol for human health. Depending on the source of land he

210 found out that cellulosic ethanol can offer health benefits from PM_{2.5} reduction. Tessum et al. (2014) uses temporally, spatially and chemically life cycle emission inventories. They found out that using “corn ethanol, coal based or ‘grid average’ electricity increases [...] environmental health impacts by 800”.

Kim et al. (2015) develop Regional Emission Information (REI) and linked
215 with the characterisation results in LCIA. They compare their results with studies without REI and found out that not using regionalised information underestimated environmental impacts (Kim et al., 2015). They use existing LCA calculation methods such as ReCiPe and CFs and then include outside emissions such as air emissions by using REI. Outside emissions are defined as emissions
220 that occur outside of the actual system boundary, but that still influence the environmental impact, such as emissions from a busy road next to a field of wheat that is studied (Kim et al., 2015).

Gasol et al. (2011) combined LCA with Geographic Information System (GIS) to present a method to determine an energy crop implementation strategy.
225 Therewith, a reduction of energy and CO₂ is possible. They concluded that the combination of LCA and GIS is beneficial to obtain “environmental results from energy and material flows based on territorial organisation” (Gasol et al., 2011).

Engelbrecht et al. (2013) study GHG mitigation in grain production in Australia. They used Integrated Spatial Technologies (IST). Therefore, LCA, Remote Sensing (RS) and GIS are interlinked with each other. IST consists of
230 two stages using RS data from satellite images and aerial photographs as inputs into GIS and the application of a stream linked LCA. LCI results are integrated into a RS and GIS database to analyse the spatial distribution of agricultural systems (Engelbrecht et al., 2013). The results show that using IST may result
235 in choosing another mitigation option than with using the a traditional LCA approach, but so far only includes carbon footprint modelling.

Humpenöder et al. (2013) use a model called AEZ-BLS to calculate the effects on land use change on the carbon balance of 1st generation biofuels. The agro-ecological zonde model (AEZ) includes spatial information, while the
240 general equilibrium model of world food economy (BLS) works on a regional

basis. The AEZ-BLS is the combined with the LCA approach of the EU Renewable Energy Directive. The results show a GHG emission saving from 1st generation biofuels compared with fossil fuels of -2-13% in the most realistic scenario (Humpenöder et al., 2013).

245 A spatialised territorial LCA (STLCA) method for agricultural territories was developed by Nitschelma et al. (2015). This method considers the spatial variability of emissions and impacts within a territory and represents an extension to conventional LCA studies. In comparison with other studies mentioned above, this studies aims to include the spatial approach in all life cycle
250 stages (Nitschelma et al., 2015).

Roy et al. (2014) analyse terrestrial acidification at the global scale. They used characterisation factors for atmospheric fate, sensitivity factor and effect factors. Spatial variability was added by calculating $2^{\circ} \times 2.5^{\circ}$ emission grids worldwide for each pollutant (Roy et al., 2014).

255 3. Method

The proposed DLCA framework consists of two main parts. In the first part time-dependent LCI is calculated. These results provide the basis for the second part spatial LCI calculation. Both approaches are explained in detail below after describing the static LCI matrix calculation. LCI data flows are
260 extracted from Ecoinvent 3 database (Weidema et al., 2013). All calculations are performed using Matlab (Version 2015b) algorithms (Matlab, 2015).

During the LCI stage of a LCA all energy, material and economic in- and output flows are identified and quantified. For the calculation these flows are split into single processes. Each of these processes considers inputs from other
265 processes, which creates an interlinked system of all process flows. The processes are linear functions of their inputs and therefore, the system can be written in matrix form (1) (see Table 1) (Heijungs, 1994; Suh and Hupples, 2005).

$$g = B \times s = B \times (I - A)^{-1} \times f, \quad (1)$$

Table 1: LCI matrix calculation parameter

Symbol	Name	Dimension	Definition
f	final demand vector	m	vector of economic flows
A	technology matrix	$m \times m$	exchange between processes
B	intervention matrix	$n \times m$	exchange between environment
s	scaling vector	m	vector of scaling factors
g	inventory results	n	vector of environmental flows
I	identity matrix	$m \times m$	square matrix with ones on the main diagonal, rest 0

where I is the identify matrix, A is the technology matrix and B is the environmental intervention matrix. All process flows are defined in the columns of matrix A , with each element in the columns representing inflows and outflows of commodities necessary for the process to happen. Every row in B defines an elementary flow, describing the amounts released to or extracted from the environment by the corresponding processes in the columns (Saurat and Ritthoff, 2013). g , s and f are the inventory, the scaling and final demand vectors, respectively (see Table 1).

3.1. Time-dependent LCI Model

The dynamic method integrated in the proposed framework in this study is the Enhanced Structural Path Analysis developed by Beloin-Saint-Pierre (Beloin-Saint-Pierre et al., 2013). This method uses relative temporal distributions (see Figure 1a) to specify elementary and process flows of a system and the system network they create. With the specific information format the calculation of temporally descriptive LCI are possible (Beloin-Saint-Pierre et al., 2013). Beloin-Saint-Pierre et al. (2014)) extends equation (1) to obtain a time-dependent expression for the vector g of the temporally explicit LCI.

In a static LCI matrix equation (1), it is straightforward to obtain the inventory vector g by matrix-matrix and matrix-vector products of environment

matrix B , matrix $(I - A)^{-1}$ of process flows and scenario vector f . However, matrix product do not simply allow for temporal information of the process-related distributions included in a dynamical LCI calculation. To retain temporal information, convolutions of the time-dependent process and environmental data are calculated. A convolution induces an "overlay" of two time-distributions to produce a third distribution, see Figure 1b. Within the ESPA method discrete time convolution is used and in this case the two distributions, one distribution for A and one for B , are summed up to receive a third one Pinsonnault et al. (2014).

It is not possible to obtain a matrix inverse $(I - A)^{-1}$ without losing the temporal information in technology matrix A . A power series expansion is therefore applied to obtain

$$(I - A)^{-1} = \sum_{k=0}^{\infty} A^k. \quad (2)$$

Equation (2) is only applicable if A has eigenvalues with absolute values less than 1. For the application to data from realistic processes this may require a scaling of A . Assuming a time-varying technology matrix, the power series (2) is altered as a series of convolutions of A with itself:

$$(I - A)^{-1} = I + A + A * A + A * A * A + \dots \quad (3)$$

Here, the $*$ -symbol indicates the convolution operation which is considered as component wise convolution, while the matrix-matrix multiplication rules apply to the time-distribution entries of the matrices. Applying (3) to the inventory equation (1) gives

$$\begin{aligned} g &= B * (I + A + A * A + A * A * A + \dots) * f \\ &= B * f + B * A * f + B * A * A * f + B * A * A * A * f + \dots \end{aligned} \quad (4)$$

²⁸⁵ In computational implementations, the power series has to be truncated after a maximum number $k \in \mathbb{N}$ of convolutions of A . Typically this can be done by setting k or via threshold as the maximum of the $\underbrace{A * \dots * A}_{k \text{ times}}$ is decreasing exponentially with k .

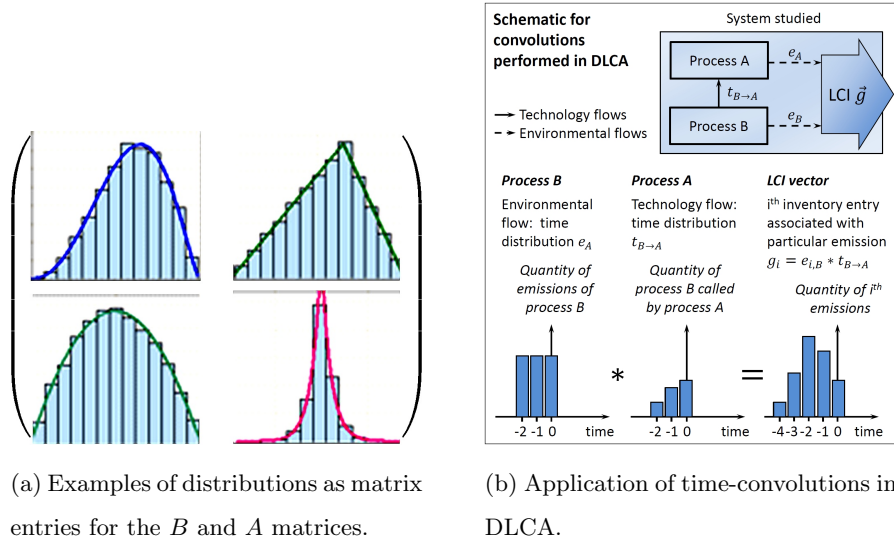


Figure 1: Examples distribution and use of convolutions.

3.2. Spatial Propagation Model

290 The result from the time-dependent LCI equation serves as input to the spatial propagation model. For the spatial propagation model a study site of a particular size is designated as a raster \mathcal{R} of grid cells. As initial condition a time-dependent and localised inventory vector is chosen and the inventory entries are propagated through time. Localised in this case means only emissions

295 are considered in the spatial propagation model that are attributed to the study site. This requires an intermediate step of mapping temporal varying LCI entries to a location. The propagation model is based on two operators generated from (a) geographical or atmospherical data, and (b) dynamical dispersion models. Both operators may be individualised to the emission type, category or possibly

300 individual emissions and inventory impacts.

Hence, topographic details, land use information, soil properties, as well as data about water flows, characteristics of currents, ground water occurrence or regional atmospheric flows are used to generate an impact parameter map M_G (see Figure 2). For a location (x, y) and an inventory entry/emission g_i , the

305 application of the operators $M_{G,i}(x, y)$ quantifies the proportion of interaction

of the emission i (of a particular type or category) with the present geography or atmospheric flows at (x, y) . $M_{G,i}$ can be modelled as linear (matrix) or nonlinear (functional) operation.

The dynamical dispersion models N_D calculate the accumulated proportion
 310 of emissions propagating from and between neighbouring cells (see Figure 3) in the raster. An emission i at cell (ξ, η) and time t with amount $e(\xi, \eta, t)$ is then dispersed as $N_{D,i}(e(\xi, \eta, t))$ which gives the amount of emission i at time $t + 1$ for all (neighbouring) cells within the raster. The considered dispersion models can define velocity, reach and direction of propagation for any emission.

The accumulated emissions after one time step at location a (x, y) is then obtained as the product of geographic/atmospheric model and dispersion model summed over all “origin-cells” in the raster

$$e(x, y, t + 1) = \sum_{\xi, \eta \in \mathcal{R}} M_{G,i}(x, y) N_{D,i}(e(\xi, \eta, t)). \quad (5)$$

As initial emissions, the i -th inventory entry sequence $(g_i(\xi, \eta, 1), g_i(\xi, \eta, 2), \dots)$, distributed in time and designated to the production grid cells $(\xi, \eta) \in \mathcal{P}$, is considered which allows iterative calculation of the emissions at location (x, y) and time $t + 1 \geq 2$:

$$\begin{aligned} e(x, y, t + 1) &= \sum_{\xi, \eta \in \mathcal{P}} M_{G,i}(x, y) N_{D,i}(g_i(\xi, \eta, t)) + \sum_{\xi, \eta \in \mathcal{R} \setminus \mathcal{P}} M_{G,i}(x, y) N_{D,i}(e(\xi, \eta, t)). \end{aligned} \quad (6)$$

315 With the geographical or atmospheric data and resulting maps, the dynamic dispersion is directing the impact, for example, flow direction of a river for emissions transport. The spatial propagation model may help to identify impacts on, for example, land and seascape, water cycles, emissions and impact on climate, weather conditions, and surface interactions.

320 While the temporal aspect of the method runs over several stages of the life cycle, the spatial aspect is very localised for the operation stages at the study site. Therefore, a selection process identifying localised LCIs is applied. Currently, we use an empirical approach identifying localised processes at the

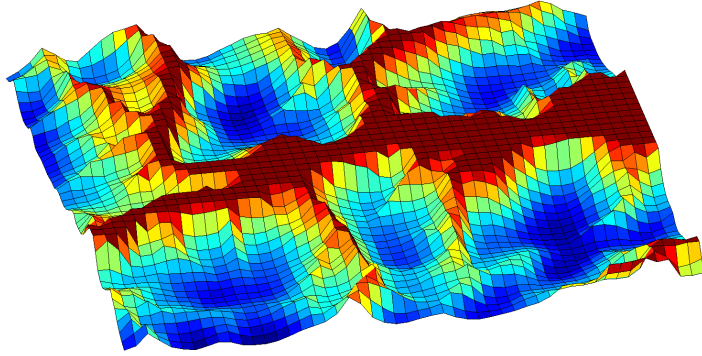


Figure 2: Example impact parameter map (red = high impact, blue = low impact).

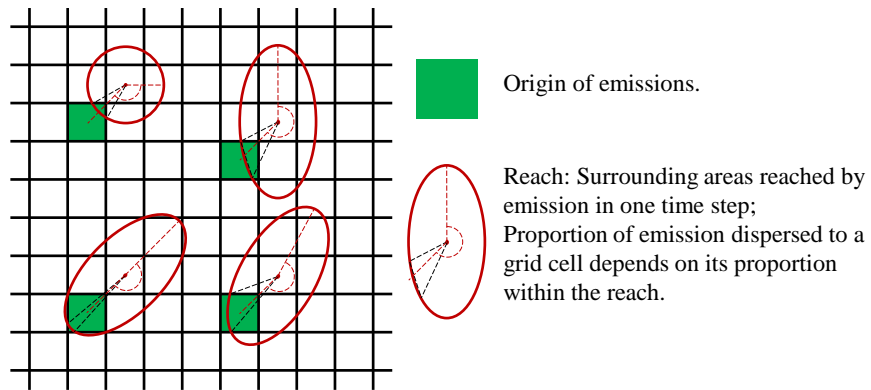


Figure 3: Conceptual propagation model for spatial dispersion of impacts.

study site to rule out "downstream and upstream" emissions.

325 4. Case study

4.1. Data

In order to illustrate the proposed theoretical framework a case study on wheat production is chosen. Information for the environmental and process matrices used for the ESPA calculation can be found in the Ecoinvent database 330 3.1 (process dataset used: Wheat grain (GLO); market for; Alloc Def; U) Weidema et al. (2013). All processes in the A-matrix are assigned into seven main activities:

- Agricultural machinery operations (integrated emissions as used in all other activities)
- 335 • Fertiliser application
- Harvesting
- Irrigation
- Pesticides application
- Sowing
- 340 • Tillage

All activities are on field operations and upstream or downstream emissions outside the field (such as production of fertilisers and pesticides) are not included in this study. These activities spread over time and several activities (such as irrigation, application of fertiliser) are repeated in possibly different 345 proportions within one wheat production cycle. One cycle of activities is shown in the bar chart 4 where the process distributions accumulate 100% over one production cycle. For the example implementation the production cycle is repeated a number of times (in the presented calculations 5 times) with inactivity of 4 intermediate time steps after each cycle. The temporal occurrence of these

350 activities represent an empirical characterisation of process distributions and aim to demonstrate the methodology introduced in Section 3.

In the case of wheat production LCI calculation, matrix B includes a collection of $n = 332$ types of emission during the wheat production cycle while matrix A specifies $m = 71$ flows and exchanges between the sub-processes of the system (Pinsonnault et al., 2014). The demand or scenario vector f collects the cumulated inputs for a specified functional unit of end product or service Mutel and Hellweg (2009). Processes within the B -matrix were assigned to the same seven main activities as the A -matrix in the columns, rows are divided into the chemicals occurrence in air (e.g. CO_2), soil (e.g. chromium) or water (e.g. nitrogen in rivers or salts in ground water) or as a raw material. The chosen chemicals are representatives and only serve as examples to test the framework. These include gas emissions to atmosphere, metal emissions to soil, acids to flowing water and salt in ground water. One year is assumed to be the timeline for a wheat production cycle, with each time step covers a two week period. As mentioned above for this case study an example site in South-West Cornwall was chosen. The top soils in this area are freely draining slightly acid loamy soils and freely draining slightly acid loamy soils over rock closer to the river bed. This loamy soils have a low fertility, and water contaminations with nitrate can be possible. Siltation and nutrient enrichments of streams from soil erosion can occur as well (Cranfield Soil and AgriFood Institute, 2016). Cornwall has a temperate Oceanic climate (Köppen climate classification), with the mildest and sunniest summers in the UK thanks to the southerly latitude and the influence of the Gulf Stream (MetOffice, 2000). Precipitation occurs during the entire year with more rain through winter months. Cornwall is also the second windiest location in the UK (MetOffice, 2015). Using ArcGIS we determined the topography data as well as water flows and ground water resources. Mastermaps with a scale of 1:50000 of tiles SW74NE, SW72NW was used (Edina Digimap, 2015). Within GIS a 50×50 grid cells with $50m \times 50m$ measurement was used. The information is then imported into grid cells to create an impact parameter map. Within the case study three locations in the study area

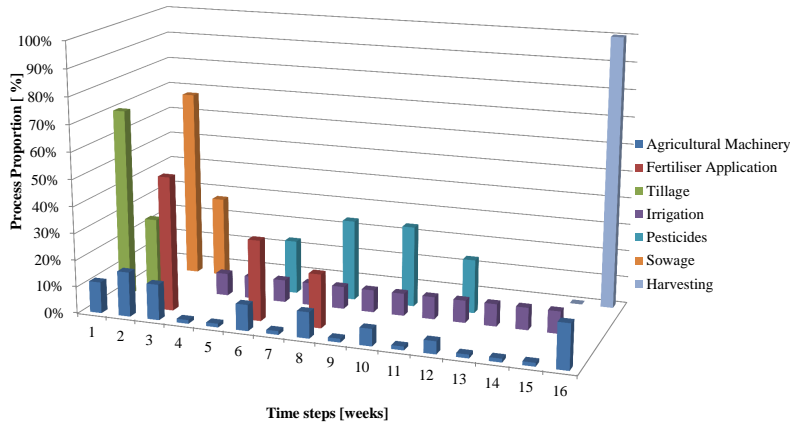


Figure 4: Main activities of the A -matrix distributed over time, expressed as the proportion of the overall activities, where each activity sums up to 100%, only one cycle shown

for the production of wheat are selected. Therefore, the origin coordinates are identified for the field and time-varying emissions are calculated.

In the considered wheat production case study, the locations (ξ, η) represent the area of an agricultural field, from where the environmental emissions are released and dispersed. The above model may lead to a better understanding of emissions from application of fertilisers and pesticides, harvesting and other processes in the life cycle of wheat production. With harvesting, direct emissions diminish before a new growing season starts, but may have longer-term and slower decreasing repercussions on the surrounding areas.

390 4.2. Results

In this section we present a qualitative analysis of the spatio-temporal LCI calculations for the considered case study of wheat production. First, the temporal distributions using the ESPA methodology are obtained, see Figure ??,

for the cumulative occurrence over a time horizon of 200 weeks of four example
395 inventory entries. The outputs of that temporal calculations are then used for
the spatial dispersion model, obtaining the distribution of all inventory entries
in the study area at every time step. Figure 5 shows how salts in ground water
spread over time, the distribution is visualised at $t = 20n + 1, n = 1, \dots, 8$. Salts
in ground water propagate from the location of deployment to the surrounding
400 areas. Emissions spread on land masses first before reaching the rivers from
where they are spread into the sea. At a certain point the emissions start to
decrease, first at the deployment coordinates then at surrounding areas. Fig-
ure 6 shows the cumulative emissions relative to the time-distribution with out
spatial dispersal (compare 6 for all chemicals in the study area with CO_2 on the
405 top left, salt in ground water in the top right, nitrogen in river at the bottom
left and chromium in soil on the bottom right. A video showing the relative
cumulative emissions over time is available in online supporting material. Emis-
sion spread slower in soil, but soon follow the flow directions of rivers, sea and
groundwater, which confirms the expected outcome.

410 5. Discussion

In this paper we introduced a new spatio-temporal framework using tem-
poral distributions and spatial dispersion models to obtain localised Life Cycle
emissions over time. The aim of the framework is to implement time and spa-
tial information into LCI. Therefore, we developed a spatial propagation model,
415 which runs after the temporally explicit LCI is produced using the existing
ESPA method. We then tested the framework using a wheat production as an
example. The results show how emissions from an origin spread in soil, air,
groundwater and river and how those emissions accumulate over time. This
study highlights the accumulation of emissions during the operation stage of a
420 life cycle, and also informs about when emissions occur and spread. The out-
come of the proposed method is influenced by the availability of data. While
performing a case study we have noticed that Ecoinvent or other LCI databases

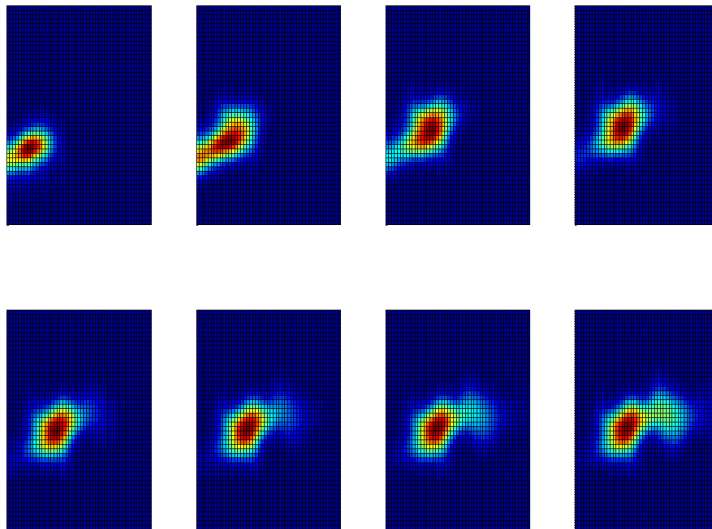


Figure 5: Emissions results for an example inventory entry at $t = 20n + 1$, $n = 1, \dots, 8$. The graph shows relative concentrations taken at different time steps

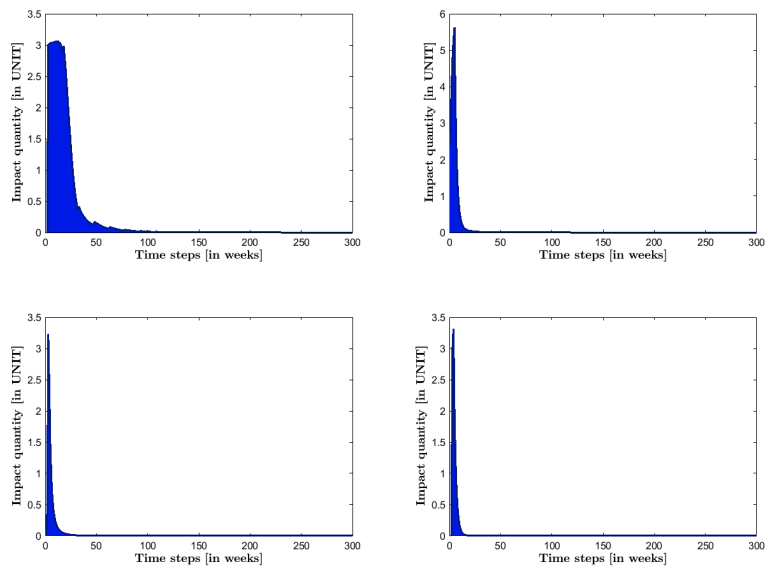


Figure 6: Emissions in time accumulated in study area as proportion of the overall temporal emission distribution for four example inventory entries a) CO_2 , b) Salt, c) Nitrogen and Chromium

are not sufficiently detailed to satisfy all the information spatial LCA as well as temporal LCA require for comprehensive and realistic results. Therefore alternative ways for collecting data needs to be considered. Local data for example
425 can be gathered by regional statistics or surveys. Downscaling of national data is also an option if regional data could not be easily obtained. On the other hand different strategies to fill data gaps are currently used: proxy data sets, extrapolating data and streamlined LCA (Milà i Canals et al., 2011; Nemecek
430 et al., 2011; Roches et al., 2010). Further improvement should also include the integration of soil types and characteristics, more detailed current data and climate data to eliminate the deficiency of the proposed model. Another future step is the mathematical optimisation of the LCI vector g in respect to the scaling vector s . This optimisation step should result in the optimum temporal and
435 spatial allocation of the LCI vector and hence inform implementation time and localisation of processes within the life cycle. In conventional LCI calculations the scenario vector has only one non zero input, the reference flow. The scenario vector ensures the required performance of the studied system, for example the reference flow could be 1000 kg of wheat. Studying the system over time though
440 allows us to spread the total amount of the reference flow into smaller sections over given time without changing the total amount. Therewith, the production of the amount stated in the reference flow can be divided along the time frame and for example production planning to meet emission thresholds can be performed. In this study, the method is only applied to a part of the wheat
445 production life cycle, focusing on activities that happen at the wheat field. Our next step is to expand the application to cover the entire life cycle of wheat production. The spatial propagation model will be used around the locations of the production of raw material such as seed and fertilisers, along the transport links and at other upstream and downstream processes produce a life cycle
450 emission map over time. A further step would be to try and integrate wheat production with the life cycle of other linked system such as livestock production. Both steps will results in significantly improved understanding of environmental impacts with spatially and temporally explicit life cycle emissions.

6. Conclusion

455 This paper proposed a novel spatio-temporal LCI approach with two main parts in order to address the static nature of conventional LCA. In the first part temporal distributions are used to represent when and how often system processes occur. This information is used to calculate a time dependent LCI vector. In the second part, the time-dependent LCI vector in a spatial propagation
460 model to produce temporally and spatially explicit LCI. The method is then illustrated in a case study of wheat production in Cornwall, UK. The presented results so far only include the agricultural operation stage of the wheat production life cycle and all upstream (e.g., fertiliser production) and downstream production (e.g., wheat transportation) processes are excluded. But the results
465 already show that it is possible to implement both spatial and temporal information in matrix-based LCI. As mentioned the results are not conclusive for wheat production due to the availability of data. With improved LCI databases, the method can be used to get more detailed calculations such as comparing winter and spring wheat, also water flow data can be updated using time-varying
470 and up-to-date data. This could potentially transform the way LCA is currently performed, i. e., in static and spatially-generic way. We believe this framework will offer significantly improved understanding of life cycle environmental impacts and better inform management of processes such as agricultural production that have high spatial and temporal heterogeneity. Further work
475 is needed to fully demonstrate the framework over entire life cycles and much more detailed LCI databases as well as temporally and spatially explicit LCIA methods are required to realise its full potential.

References

Arbault, D., Rivière, M., Rugani, B., Benetto, E., Tiruta-Barna, L., 2014. In-
480 tegrated earth system dynamic modeling for life cycle impact assessment of ecosystem services. *Science of The Total Environment* 472, 262–272.

- Bare, J., Norris, G., Pennington, D., McKone, T., 2003. TRACI: The tool for the reduction and assessment of chemical and other environmental impacts. *Journal of Industrial Ecology* 6, 49–78.
- 485 Beloin-Saint-Pierre, D., Heijungs, R., Blanc, I., 2014. The ESPA (Enhanced Structural Path Analysis) method: a solution to an implementation challenge for dynamic life cycle assessment studies. *The International Journal of Life Cycle Assessment* 19, 861–871.
- 490 Beloin-Saint-Pierre, D., Levasseur, A., Pinsonnault, A., Margni, M., Blanc, I., et al., 2013. How Can Temporal Considerations Open New Opportunities for LCA Industry Applications?, in: *Proceedings of the International Conference on Life Cycle Management-LCM 2013*.
- Brentrup, F., Küsters, J., Lammel, J., Barraclough, P., Kuhlmann, H., 2004. Environmental impact assessment of agricultural production systems using the life cycle assessment (LCA) methodology ii. the application to N fertilizer use in winter wheat production systems. *European Journal of Agronomy* 20, 265–279.
- 500 Bright, R.M., Cherubini, F., Strømman, A.H., 2012. Climate impacts of bioenergy: Inclusion of carbon cycle and albedo dynamics in life cycle impact assessment. *Environmental Impact Assessment Review* 37, 2–11.
- Milà i Canals, L., Azapagic, A., Doka, G., Jefferies, D., King, H., Mutel, C., Nemecek, T., Roches, A., Sim, S., Stichnothe, H., Thoma, G., et al., 2011. Approaches for Addressing Life Cycle Assessment Data Gaps for Bio-based Products. *Journal of Industrial Ecology* 15, 707–725.
- 505 Collet, P., Hélias, A., Lardon, L., Steyer, J.P., 2011. Time and Life Cycle Assessment: How to Take Time into Account in the Inventory Step?, in: *Towards Life Cycle Sustainability Management*. Springer, pp. 119–130.
- Commission, E., 2010. ILCD Handbook: International reference life cycle data system. General guide for life cycle assessment: Detailed guidance. Report.

- 510 Cranfield Soil and AgriFood Institute, 2016. Soilscape maps. Online.
- Dyckhoff, H., Kasah, T., 2014. Time Horizon and Dominance in Dynamic Life Cycle Assessment. *Journal of Industrial Ecology* 00, online.
- Edina Digimap, 2015. Os mastermap raster [shape geospatial data], scale 1:50000, tiles: Sw74ne, sw72nw (downloaded aug 2015). Ordnance Survey, 515 Using: EDINA Digimap Ordnance Survey Service.
- Edwards-Jones, G., Plassmann, K., Harris, I., 2009. Carbon footprinting of lamb and beef production systems: insights from empirical analysis of farms in wales UK. *Journal of Agricultural Science* , 707–71p.
- Engelbrecht, D., Biswas, W.K., Ahmad, W., 2013. An evaluation of integrated 520 spatial technology framework for greenhouse gas mitigation in grain production in Western Australia. *Journal of Cleaner Production* 57, 69–78.
- FAO, 2014. Crop Prospects and Food Situation: <http://www.fao.org/3/f9d7e51e-f986-4205-a39e-3202548ce484/i4096e.pdf>: accessed 07/10/2014. Pdf.
- 525 Gasol, C.M., Gabarrell, X., Rigola, M., González-García, S., Rieradevall, J., 2011. Environmental assessment:(LCA) and spatial modelling (GIS) of energy crop implementation on local scale. *biomass and bioenergy* 35, 2975–2985.
- Geyer, R., Stoms, D.M., Lindner, J.P., Davis, F.W., Wittstock, B., 2010. Coupling GIS and LCA for biodiversity assessments of land use. *The international 530 journal of life cycle assessment* 15, 454–467.
- Goglio, P., Bonari, E., Mazzoncini, M., 2012. LCA of cropping systems with different external input levels for energetic purposes. *Biomass and Bioenergy* 42, 33–42.
- Heijungs, R., 1994. A generic method for the identification of options for cleaner 535 products. *Ecological Economics* 10, 69–81.

- Hellweg, S., Hofstetter, T.B., Hungerbuhler, K., 2003. Discounting and the environment should current impacts be weighted differently than impacts harming future generations? *The International Journal of Life Cycle Assessment* 8, 8–18.
- 540 Hill, J., Polasky, S., Nelson, E., Tilman, D., Huo, H., Ludwig, L., Neumann, J., Zheng, H., Bonta, D., 2009. Climate change and health costs of air emissions from biofuels and gasoline. *Proceedings of the National Academy of Sciences* 106, 2077–2082.
- 545 Humpenöder, F., Schaldach, R., Cikovani, Y., Schebek, L., 2013. Effects of land-use change on the carbon balance of 1st generation biofuels: An analysis for the european union combining spatial modeling and lca. *Biomass and Bioenergy* 56, 166–178.
- Kendall, A., 2012. Time-adjusted global warming potentials for LCA and carbon footprints. *The International Journal of Life Cycle Assessment* 17, 1042–1049.
- 550 Kendall, A., Chang, B., Sharpe, B., 2009. Accounting for Time-dependent Effects in Biofuel Life Cycle Greenhouse Gas Emissions Calculations. *Environmental Science & Technology* 43, 7142–7147.
- Kim, J., Yalaltdinova, A., Sirina, N., Baranovskaya, N., 2015. Integration of life cycle assessment and regional emission information in agricultural systems. 555 *Journal of the Science of Food and Agriculture* .
- Levasseur, A., Lesage, P., Margni, M., Deschenes, L., Samson, R., 2010. Considering Time in LCA: Dynamic LCA and Its Application to Global Warming Impact Assessments. *Environmental Science & Technology* 44, 3169–3174.
- 560 Linquist, B., Groenigen, K.J., Adviento-Borbe, M.A., Pittelkow, C., Kessel, C., 2012. An agronomic assessment of greenhouse gas emissions from major cereal crops. *Global Change Biology* 18, 194–209.
- Matlab, 2015. MATLAB version 8.5.1. volume R2015b (Version 8.5.1). The MathWorks Inc., Natick, Massachusetts.

- McManus, M., 2010. Life cycle assess-
565 ment: An introduction: http://www.bath.ac.uk/i-see/posters/life_cycle_assessment_an_introduction_mm_ppp_isee_website.pdf:
accessed 01/08/2013.
- MetOffice, 2000. Annual average temperature for the united kingdom. Website.
- MetOffice, 2015. South west england: climate.
- 570 Mutel, C.L., Hellweg, S., 2009. Regionalized Life Cycle Assessment: Computational Methodology and Application to Inventory Databases. *Environmental Science & Technology* 43, 5797–5803.
- Nemecek, T., Weiler, K., Plassmann, K., Schnetzer, J., Gaillard, G., Jefferies, D., García-Suárez, T., King, H., i Canals, L.M., 2011. Modular extrapolation
575 approach for crop LCA MEXALCA: global warming potential of different crops and its relationship to the yield, in: *Towards Life Cycle Sustainability Management*. Springer, pp. 309–317.
- Nitschelma, L., Aubina, J., Corsona, M.S., Viauda, V., Walter, C., 2015. Spatial differentiation in LCA applied to an agricultural territory: current practices
580 and method development. *Journal of Cleaner Production* Online available from 22nd October 2015. In Press.
- Owens, J., 1997. Life-Cycle Assessment: Constraints on Moving from Inventory to Impact Assessment. *Journal of Industrial Ecology* 1, 37–49.
- Pehnt, M., 2006. Dynamic life cycle assessment (LCA) of renewable energy
585 technologies. *Renewable energy* 31, 55–71.
- Pinsonnault, A., Lesage, P., Levasseur, A., Samson, R., 2014. Temporal differentiation of background systems in LCA: relevance of adding temporal information in LCI databases. *The International Journal of Life Cycle Assessment* 19, 1843–1853.

- 590 Porsö, C., Hansson, P.A., 2014. Time-dependent climate impact of heat production from Swedish willow and poplar pellets - In a life cycle perspective. *Biomass and Bioenergy* .
- Rebitzer, G., Ekvall, T., Frischknecht, R., Hunkeler, D., Norris, G., Rydberg, T., Schmidt, W.P., Suh, S., Weidema, B.P., Pennington, D., 2004. Life cycle
595 assessment: Part 1: Framework, goal and scope definition, inventory analysis, and applications. *Environment international* 30, 701–720.
- Roches, A., Nemecek, T., Gaillard, G., Plassmann, K., Sim, S., King, H., i Canals, L.M., 2010. MEXALCA: a modular method for the extrapolation of crop LCA. *The International Journal of Life Cycle Assessment* 15, 842–854.
- 600 Röder, M., Thornley, P., Campbell, G., Bows-Larkin, A., 2014. Emissions associated with meeting the future global wheat demand: A case study of UK production under climate change constraints. *Environmental Science & Policy* 39, 13 – 24.
- Roy, P., Nei, D., Orikasa, T., Xu, Q., Okadome, H., Nakamura, N., Shiina, T.,
605 2009. A review of life cycle assessment (LCA) on some food products. *Journal of Food Engineering* 90, 1–10.
- Roy, P.O., Azevedo, L.B., Margni, M., van Zelm, R., Deschênes, L., Huijbregts, M.A., 2014. Characterization factors for terrestrial acidification at the global scale: A systematic analysis of spatial variability and uncertainty. *Science of the Total Environment* 500, 270–276.
610
- Saurat, M., Ritthoff, M., 2013. Calculating mips 2.0. *Resources* 2, 581–607.
- Seppälä, J., Posch, M., Johansson, M., Hettelingh, J.P., 2006. Country-dependent Characterisation Factors for Acidification and Terrestrial Eutrophication Based on Accumulated Exceedance as an Impact Category Indicator. *The International Journal of Life Cycle Assessment* 11, 403–416.
615

- Spatari, S., Bertram, M., Gordon, R.B., Henderson, K., Graedel, T., 2005. Twentieth century copper stocks and flows in North America: A dynamic analysis. *Ecological Economics* 54, 37–51.
- Srinivas, H., 2014. Defining life cycle assessment:
620 <http://www.gdrc.org/uem/lca/lca-define.html>: accessed 26/09/2014.
- Suh, S., Huppes, G., 2005. Methods for life cycle inventory of a product. *Journal of Cleaner Production* 13, 687–697.
- Technical Committee ISO/TC 207, 2010. ISO 14040:2006: Environmental Management – Life Cycle Assessment – Principles and Framework.
- 625 Tessum, C.W., Hill, J.D., Marshall, J.D., 2014. Life cycle air quality impacts of conventional and alternative light-duty transportation in the United States. *Proceedings of the National Academy of Sciences* 111, 18490–18495.
- Udo de Haes, H., 2006. How to approach land use in LCIA or, how to avoid the Cinderella effect? *The International Journal of Life Cycle Assessment* 11,
630 219–221.
- UNECE, 2014. Convention on Long-range Transboundary Air Pollution.
- Viebahn, P., Lechon, Y., Trieb, F., 2011. The potential role of concentrated solar power (CSP) in Africa and Europe - A dynamic assessment of technology development, cost development and life cycle inventories until 2050. *Energy*
635 Policy 39, 4420–4430.
- Wegener Sleeswijk, A., Heijungs, R., 2010. GLOBOX: A spatially differentiated global fate, intake and effect model for toxicity assessment in LCA. *Science of The Total Environment* 408, 2817–2832.
- Weidema, B., Bauer, C., Hischier, R., Mutel, C., Nemecek, T., Reinhard, J.,
640 Vadenbo, C., Wernet, G., 2013. The ecoinvent database: Overview and methodology, data quality guideline for the ecoinvent database version 3.

- van der Werf, H.M., Garnett, T., Corson, M.S., Hayashi, K., Huisingh, D., Cederberg, C., 2014. Towards eco-efficient agriculture and food systems: theory, praxis and future challenges. *Journal of Cleaner Production* 73, 1–9.
- 645 Yang, J., Chen, B., 2014. Global warming impact assessment of a crop residue gasification project - a dynamic LCA perspective. *Applied Energy* 122, 269–279.
- Zhai, P., Williams, E.D., 2010. Dynamic Hybrid Life Cycle Assessment of Energy and Carbon of Multicrystalline Silicon Photovoltaic Systems. *Environmental Science & Technology* 44, 7950–5.
- 650