

**Influence of inflammation and nitric oxide upon platelet aggregation following deposition of diesel exhaust particles in the airways.**

Running title: Diesel exposure and platelets

E Smyth<sup>\*</sup>, A Solomon<sup>\*</sup>, M A Birrell<sup>†</sup>, M J Smallwood<sup>‡</sup>, P G Winyard<sup>‡</sup>, T D Tetley<sup>§</sup> and M Emerson<sup>\*</sup>

<sup>\*</sup>Platelet Biology Group, National Heart and Lung Institute, Imperial College London, London, UK

<sup>†</sup>Respiratory Pharmacology, National Heart and Lung Institute, Imperial College London, London, UK

<sup>‡</sup>Inflammation Research Group, University of Exeter Medical School, Exeter, UK

<sup>§</sup>Lung Cell Biology Group, Section of Pharmacology and Toxicology, National Heart and Lung Institute, Imperial College London, London, UK.

Corresponding author: Dr Michael Emerson, Molecular Medicine Section, National Heart and Lung Institute, Imperial College London, Sir Alexander Fleming Building, Exhibition Road, London, SW7 2AZ, UK. Tel: +44207 5941877; Fax: +44207 5943100; Email: [m.emerson@imperial.ac.uk](mailto:m.emerson@imperial.ac.uk)

This article has been accepted for publication and undergone full peer review but has not been through the copyediting, typesetting, pagination and proofreading process which may lead to differences between this version and the Version of Record. Please cite this article as doi: 10.1111/bph.13831

## ABSTRACT

*Background and Purpose:* Exposure to nanoparticulate pollution has been implicated in platelet-driven thrombotic events such as myocardial infarction. Inflammation and impairment of nitric oxide (NO) bioavailability have been proposed as potential causative mechanisms. It is unclear, however, whether airways exposure to combustion-derived nanoparticles such as diesel exhaust particles (DEP) or carbon black (CB) can augment platelet aggregation *in vivo* and the underlying mechanisms remain undefined. We aimed to investigate the impact of acute lung exposure to DEP and CB upon platelet activation and the associated role of inflammation and endothelial-derived NO.

*Experimental Approach:* DEP and CB were intratracheally instilled into wild-type (WT) and eNOS<sup>-/-</sup> mice and platelet aggregation was assessed *in vivo* using an established model of radiolabelled platelet thromboembolism. The underlying mechanisms were investigated by measuring inflammatory markers, NO metabolites and light transmission aggregometry.

*Key Results:* Platelet aggregation *in vivo* was significantly enhanced in WT and eNOS<sup>-/-</sup> mice following acute airways exposure to DEP but not CB. CB exposure but not DEP, was associated with significant increases in pulmonary neutrophils and IL-6 levels in the bronchoalveolar lavage fluid and plasma of WT mice. Neither DEP nor CB affected plasma nitrate/nitrite concentration and DEP-induced human platelet aggregation was inhibited by an NO donor.

*Conclusions and Implications:* Pulmonary exposure to DEP and subsequent platelet activation may be implicated in the reported increased cardiovascular risk associated with exposure to airborne pollution independent of its impact on inflammation or NO bioavailability.

**Abbreviations:** BALF: bronchoalveolar lavage fluid; CB: carbon black; DEP: diesel exhaust particles; eNOS: endothelial nitric oxide synthase; eNOS<sup>-/-</sup>: endothelial nitric oxide synthase knock-out mice; MI: myocardial infarction; NO: nitric oxide; PM: particulate matter; PMN: polymorphonuclear leukocyte

**Number of Figures:** 5 + 1 supplementary

**Number of Tables:** 0

## INTRODUCTION

Exposure to ambient particulate matter (PM) is associated with thrombotic events such as myocardial infarction (MI) and stroke (Peters, Dockery, Muller & Mittleman, 2001). The PM 0.1 fraction of air pollution, which includes diesel exhaust particles (DEP) and carbon black (CB) and is principally combustion generated from vehicle emissions, is strongly implicated as a causative risk factor for these cardiovascular events (Andersen, Olsen, Andersen, Loft, Ketzler & Raaschou-Nielsen, 2010). Platelet activation and aggregation are important drivers of the thrombotic events associated with exposure to PM 0.1 (Lucking et al., 2008; Nemmar, Hoet, Dinsdale, Vermeylen, Hoylaerts & Nemery, 2003; Solomon et al., 2013).

Lung exposure to DEP has been shown to enhance experimental thrombosis and platelet activation in both animal models (Nemmar, Hoet, Dinsdale, Vermeylen, Hoylaerts & Nemery, 2003; Nemmar, Nemery, Hoet, Vermeylen & Hoylaerts, 2003) and man (Lucking et al., 2008). Exposure to both DEP and CB has been associated with inflammation (Gilmour et al., 2004; Lucking et al., 2008; Nemmar, Hoet, Dinsdale, Vermeylen, Hoylaerts & Nemery, 2003; Nemmar, Nemery, Hoet, Vermeylen & Hoylaerts, 2003) and initiation of pulmonary and systemic inflammation has been proposed as a mechanism by which PM 0.1 inhalation may promote platelet aggregation and thrombosis (Mills et al., 2005; Oberdorster, Ferin, Gelein, Soderholm & Finkelstein, 1992). Interleukin-6 (IL-6) has been particularly associated with diesel exhaust (DE) or DEP exposure in both rodents (Conklin, Kong & Committee, 2015; Robertson et al., 2012) and humans (Krishnan et al., 2013). In addition, leukocyte infiltration in the lungs is widely reported following exposure to DEP (Nemmar, Nemery, Hoet, Vermeylen & Hoylaerts, 2003; Oberdorster, Ferin, Gelein, Soderholm & Finkelstein, 1992; Robertson et al., 2012; Xu et al., 2013). In contrast, DEP was able to accelerate thrombosis in rats without evidence of pulmonary or systemic inflammation (Tabor et al., 2016) so that the role of inflammation in driving DEP-associated cardiovascular risk remains unclear.

As an alternative to the inflammation mechanism, it has been reported that nanoscale materials can translocate across the pulmonary epithelial barrier and enter the circulation. Thus, nanoparticles may interact directly with blood components including platelets (Kreyling et al., 2009; Nemmar, Vanbilloen, Hoylaerts, Hoet, Verbruggen & Nemery, 2001; Oberdorster et al., 2002). Previous work by us showed that DEP can physically interact with isolated platelets leading to activation and aggregation as well as enhancement of aggregation at lower concentrations (Solomon et al., 2013). Furthermore, systemic administration of DEP by the intravenous route, to mimic a scenario in which PM 0.1 traversed the lung epithelium, caused enhanced platelet aggregation *in vivo* (Solomon et al., 2013) and thrombogenesis

(Tabor et al., 2016). Binding of DEP to glycoprotein VI (GPVI) and/or C-type lectin-like receptor-2 (CLEC-2) has been suggested to be an underlying mechanism behind DEP-induced platelet aggregation (Alshehri et al., 2015).

The *in vivo* experimental models of thrombosis primarily used to date are vascular injury models and *ex vivo* preparations which involve multifactorial thrombotic processes and do not distinguish specific impacts on platelets. Although DEP administered intravenously has been shown to increase platelet aggregation *in vivo*, the distinct effect on platelet aggregation following administration to the airways remains unclear.

It is reported that DEP can reduce the bioavailability of nitric oxide (NO) possibly *via* uncoupling of endothelial NO synthase (eNOS) or increased oxidative stress (Knuckles, Lund, Lucas & Campen, 2008; Langrish et al., 2013; Wauters et al., 2013). Since NO generated in the vascular endothelium is a major endogenous negative regulator of platelet activation (Emerson, Momi, Paul, Alberti, Page & Gresele, 1999; Moore, Sanz-Rosa & Emerson; Moore, Tymvios & Emerson, 2010), reduced NO bioavailability following exposure to DEP could hypothetically lead to enhanced platelet activation.

We hypothesised that acute exposure of the mouse airway to DEP or CB modulates platelet aggregation *in vivo*. We used an established mouse pharmacological model of radiolabelled platelet aggregation to explore our hypothesis and evaluated whether any observed effects on platelet aggregation were associated with pulmonary leukocyte infiltration, IL-6-mediated inflammation or related to NO activity.

## METHODS

### *Preparation of washed human platelets*

Washed platelet suspensions were prepared from citrated blood from consenting healthy aspirin-free male and female human donors (23 – 55 years) as previously described (Jones et al., 2010). Informed consent was obtained from all donors and the procedures were approved by the NHS National Research Ethics Service.

### *Light transmission aggregometry*

Human platelets were stimulated with either DEP at concentrations previously shown to induce concentration-dependent aggregation ( $12\text{--}50\ \mu\text{g ml}^{-1}$ ) (Solomon et al., 2013), collagen ( $5\ \mu\text{g ml}^{-1}$ ) or THB (HEPES-buffered Tyrode's solution) and aggregation was measured in an optical aggregometer (Chrono-log Corporation, Haventown, PA, USA) for 3 min as previously reported (Solomon et al., 2013). The NO donor sodium nitroprusside (SNP) ( $10\ \mu\text{M}$ ) was incubated with platelets for 5 min prior to agonist stimulation. Having consulted the ARRIVE guidelines (Kilkenny, Browne, Cuthill, Emerson & Altman, 2010), it was considered unnecessary to conduct *in vitro* experiments in mice on the grounds that it could be reasonably concluded that observations made in humans would apply to mice. Given that the human platelet response is the end-point of interest, *in vitro* experiments in mice could not be justified from a 3Rs perspective.

### *Animals*

Male C57BL/6 mice (Harlan, Bicester, UK) between 20–25 g were used. eNOS knockout mice (eNOS<sup>-/-</sup>, strain 0026847) (18 – 25 g) were purchased from Jackson Laboratory (Bar Harbor, ME, USA) and bred in-house. Food and water were available *ab libitum* and animals were housed in groups of 5 in individually ventilated cages. Animal procedures were performed in accordance with our Home Office licence and with authorisation from the Imperial College London Ethical Review Panel. Protocols were refined in association with the National Centre for Replacement, Refinement and Reduction of Animals in Research (NC3Rs) (Tymvios, Jones, Moore, Pitchford, Page & Emerson, 2008) and are reported in accordance with the ARRIVE guidelines for reporting experiments involving animals (Kilkenny, Browne, Cuthill, Emerson & Altman, 2010). Animals were randomised to treatment groups. Details of anaesthesia are provided below. At the end of procedures, animals were killed by cervical dislocation.

### *Preparation of nanoparticles*

DEP and CB particles were prepared in sterile saline (NaCl 0.9%) or THB and sonicated prior to use using techniques previously described and shown to generate nanoparticulate suspensions (Solomon et al., 2013).

### *Intratracheal instillation of diesel exhaust particles and carbon black*

WT and eNOS<sup>-/-</sup> mice were anaesthetised with isoflourane (4 %) and a 50 µl bolus of either saline (0.9 % w/v), CB or DEP (25 µg/mouse) was administered through a Hamilton syringe<sup>®</sup> attached to an oral gavage steel feeding tube. Mice were left to recover for 4 h prior to the experiments in a surgical recovery box.

### *Bronchoalveolar lavage and plasma collection and cell counting*

Mice were terminally anaesthetised with urethane (10 µl g<sup>-1</sup> 25 % w/v i.p), bronchoalveolar lavage fluid (BALF) was collected as previously described (Raemdonck et al., 2016). Total and differential cell counts were performed as previously described (Raemdonck et al., 2016). Citrated blood was collected *via* cardiac puncture from mice terminally anesthetized with urethane (10 µl g<sup>-1</sup> 25 % w/v i.p). Blood was centrifuged at 300 rcf for 3 min and plasma stored at -80°C until further analysis.

### *In vivo platelet aggregation*

A previous model of *in vivo* platelet aggregation was employed (Tymvios, Jones, Moore, Pitchford, Page & Emerson, 2008). Citrated blood was collected *via* cardiac puncture from mice (WT or eNOS<sup>-/-</sup>) terminally anesthetised with urethane (2g kg<sup>-1</sup> *i.p.*). Platelets were isolated and radiolabelled as previously described (Tymvios, Jones, Moore, Pitchford, Page & Emerson, 2008). Terminally anesthetised mice (1.5 g kg<sup>-1</sup> urethane *i.p.*) were intravenously (*i.v.*) infused with radiolabelled platelets prior to *i.v.* administration of collagen (50 µg kg<sup>-1</sup>). Entrapment of platelet aggregates in the pulmonary vasculature following aggregation in the systemic circulation was quantified by recording changes in radioactive counts for 5 min with a Single Point Extended Area Ratio (SPEAR) probe (eV products, Saxonburg, PA) positioned over the pulmonary vasculature and custom software (Mumed systems, London, UK) as previously described (Tymvios, Jones, Moore, Pitchford, Page & Emerson, 2008).

### *Histological analysis of nanoparticle pulmonary deposition following intratracheal instillation*

Immediately following *i.t.* instillation mice were euthanized *via* cervical dislocation and their lungs were dissected, briefly washed in PBS and fixed in formalin overnight. Following this, samples were embedded in wax, sectioned (longitudinally) and stained (haematoxylin and eosin). The samples were viewed using a light microscope (x 20 and x 40).

### *Enzyme-Linked Immunosorbent Assay*

WT mouse cytokines (IL-6) were quantified in cell free BALF and plasma using a standard sandwich ELISA (DuoSet ELISA kits, R&D Systems, USA) as per the manufacturer's instructions. All samples were run in triplicate with the appropriate controls and the standard curve was run in duplicate. Cytokine concentrations were calculated using a standard curve.

### *Ozone chemiluminescence for measurement of plasma nitrate*

Nitrate/nitrite concentrations were measured in plasma from mice treated with DEP or CB (25 µg/mouse) *via i.t.* instillation using ozone chemiluminescence with a Sievers nitric oxide analyzer (280; Analytix, Boldon, UK, as previously reported (Apostoli, Solomon, Smallwood, Winyard & Emerson, 2014)).

### *Experimental design, data and statistical analysis*

For most protocols, blinding was not feasible as experiments were conducted by an individual experimentalist, however, for histological analyses, blinding was used. Unless otherwise stated, data is presented as box-and-whisker plots; the horizontal lines inside the box indicate the median. The box edges extend from the 25<sup>th</sup> to the 75<sup>th</sup> percentiles and the whiskers represent the minimum and maximum values. Statistical analyses were performed on raw data using Prism 5 Graphpad software. Two way analyses were conducted using a Mann-Whitney test and multiple comparisons were conducted using a Kruskal-Wallis test with Dunn's comparison. Post-hoc tests were run only if there was no significant variance in homogeneity. Power calculations were conducted (at level 0.8) to determine appropriate n numbers. A P value < 0.05 was indicative of statistical significance. Data and statistical analysis comply with the recommendations on experimental design and analysis in pharmacology (Curtis et al., 2015).

## Materials

Materials used were as follows:  $^{111}$ indium oxine (Mallinckrodt Radiopharmacy Services, London, UK); collagen (Nycomed, Munich, Germany); diesel exhaust particles (SRM 2975; National Institute of Standards and Technology, Gaithersburg, MD, USA); carbon black (Printex-90; Degussa GmbH, Hanau, Germany); cytokine ELISAs DuoSet (R&D systems, Minnesota, USA). All other materials were purchased from Sigma-Aldrich (Poole, UK) and were of analytical grade. THB contained 134 mM NaCl, 2.9 mM KCl, 12 mM NaHCO<sub>3</sub>, 0.34 mM Na<sub>2</sub>HPO<sub>4</sub>, 20 mM HEPES, 10 mM glucose and 1 mM MgCl<sub>2</sub> (pH 7.4).

## Nomenclature of targets and ligands

Key protein targets and ligands in this article are hyperlinked to corresponding entries in <http://www.guidetopharmacology.org>, the common portal for data from the IUPHAR/BPS Guide to PHARMACOLOGY (Southan et al., 2016), and are permanently archived in the Concise Guide to PHARMACOLOGY 2015/16 (Alexander et al., 2015a; Alexander et al., 2015b).

## RESULTS

### *Diesel exhaust particles and carbon black were deposited in the conducting airways*

Since a significant proportion of PM 0.1 inhaled by humans is deposited in the distal airways (ICRP, 1994), the location of DEP (Fig. 1B + E) and CB (Fig 1.A + D) following *i.t.* instillation was examined. The lung microarchitecture was similar between the saline control, DEP and CB exposed airways (Fig. 1). Aggregates of CB and DEP were observed in contact with the pulmonary epithelial cells (Fig. 1E-F) and conducting airways (Fig. 1B-C). These data confirm that *i.t.* instillation of nanoparticles leads to their deposition deep in the airways.

### *Diesel exhaust particle deposition in the airways enhanced platelet aggregation in vivo*

Having shown deposition of DEP and CB in the conducting airways, we explored whether this was associated acutely (4 h later) with an enhancement of agonist-induced platelet aggregation *in vivo* using a model of radiolabelled platelet thromboembolism. There was a significant increase in collagen-induced platelet aggregation *in vivo* measured as area under the curve (AUC) ( $P < 0.05$  compared to saline control) 4 h following *i.t.* administration of DEP (Fig. 2A and 2C). In contrast, there was no significant enhancement of the AUC (Fig. 2B and 2D;  $P > 0.05$  compared to saline control) following administration of CB.



### *Carbon black exposure induced pulmonary and systemic inflammation*

Having shown contrasting impacts of DEP and CB upon *in vivo* platelet aggregation, we investigated whether these effects were associated with changes in inflammatory markers. A significant increase in both neutrophils and IL-6 ( $P < 0.05$  compared to saline; Fig. 3A+B) was detected in BALF following exposure to CB. In contrast, no significant increases in neutrophils (Fig. 3A) or IL-6 (Fig. 3B;  $P > 0.05$  compared to saline) were observed in BALF following administration of DEP. Plasma levels of IL-6 were also significantly increased following administration of CB but not DEP (Fig. 3C). Neither DEP nor CB caused a detectable change in other leukocytes in BALF (data not shown). DEP therefore enhanced *in vivo* platelet aggregation in the absence of an effect upon the inflammatory parameters measured whereas CB produced a detectable inflammatory response without impacting platelet aggregation.

### *Diesel exhaust particles enhanced platelet aggregation in the absence of eNOS*

We explored the hypothesis that DEP exerted effects *via* eNOS by employing eNOS<sup>-/-</sup> mice. A lack of effect of DEP upon platelet aggregation in eNOS<sup>-/-</sup> would confirm this hypothesis. Following *i.t.* instillation of DEP into eNOS<sup>-/-</sup> mice, a significant enhancement of the AUC ( $P < 0.05$  compared to saline control) in response to collagen was observed after 4 h (Fig. 4A + B). No significant changes in AUC were detected for CB exposed eNOS<sup>-/-</sup> mice (Fig 4A + B). Thus, the impact of DEP upon platelet aggregation *in vivo* is not dependent upon the presence of eNOS.

We also analysed the fold-increase in AUC following DEP or CB exposure relative to saline responses in order to determine whether platelet responses were proportionally different in eNOS<sup>-/-</sup> compared to WT. Although no significant differences were observed, there was a non-significant trend towards an increased proportional response following DEP exposure in eNOS<sup>-/-</sup> *versus* WT (Fig 4C).

### *DEP and NO-mediated regulation of platelets*

Neither DEP nor CB instillation caused any significant alteration in plasma nitrate levels (Fig. 5A) indicating a lack of a detectable effect on NO bioavailability. Nitrite levels were below the detection limit (50 nM) of the assay. Having previously shown that DEP can induce platelet aggregation (Solomon et al., 2013) as well as a trend towards greater aggregation in the absence of eNOS (Fig. 4C), we investigated whether DEP-induced platelet aggregation was sensitive to the negative regulator of platelet activation, NO. Isolated human

platelet aggregation induced by collagen or DEP ( $12 - 50 \mu\text{g mL}^{-1}$ ) was significantly inhibited by SNP ( $10 \mu\text{M}$ ) ( $P < 0.05$ ; Fig. 5B). Typical raw data traces showing the effect of SNP on collagen- and DEP-induced aggregation are provided as a supplementary figure. Thus, we did not find evidence that the ability of DEP to enhance platelet aggregation was driven by changes in NO bioavailability. Under our experimental conditions *in vivo*, loss of NO did not significantly enhance aggregation, however, our *in vitro* data do not exclude the possibility that NO may inhibit the ability of DEP to directly induce platelet aggregation should it translocate across the epithelial barrier.

## DISCUSSION AND CONCLUSIONS

In this study, we explored the hypothesis that introduction of DEP into the airways could lead to an enhancement of subsequent platelet aggregation in an acute time frame. One of the principle reasons why inhaled PM 0.1 such as DEP is considered to be responsible for the harmful effects of ambient PM is its deposition within the lower airways including the alveolar gas exchange units (ICRP, 1994). In the present study, agglomerates of DEP and CB were observed both in the conducting airways and the distal alveoli confirming appropriate lung penetration following *i.t.* administration. *I.t.* instillation therefore, to some extent, mimics inhalation of nanoparticles into the airways. It is not, however, possible from the histological analyses conducted to observe individual nanoparticles nor to assess their translocation across the lung epithelium. It is important to address the relevance of the doses of nanoparticles employed in this study with reference to human exposure. More than 20 mg of particulates can be inhaled by humans in polluted cities every 24 hours (Nemmar, Hoet, Dinsdale, Vermeylen, Hoylaerts & Nemery, 2003). Our dosing of  $25 \mu\text{g}$  equates to a total burden of 2 mg per kg body weight so although our study was not intended to mimic human exposure, the levels used are probably relevant if one considers an exposure period of a few days.

The thrombotic events associated with inhalation of PM 0.1 involve platelet activation and aggregation, however, currently there is limited information regarding the influence of DEP and CB on platelet function *in vivo*. The present study showed that DEP, but not CB, administered to the lungs of mice *via* the instillation route caused a significant increase in agonist-induced platelet aggregation *in vivo* 4 h post-exposure. These results indicate that the thrombotic events associated with acute pulmonary exposure to PM 0.1 may be driven mechanistically by platelets.

Supportive to the present study, acute exposure to DEP by *i.t.* instillation has been demonstrated to enhance thrombosis and platelet activation in rodent models after 30, 60 (Nemmar, Hoet, Dinsdale, Vermynen, Hoylaerts & Nemery, 2003) or 120 min (Tabor et al., 2016). Similarly, thrombosis was enhanced *in vivo* following a 24 h exposure of lungs to DEP (Nemmar, Al-Salam, Dhanasekaran, Sudhadevi & Ali, 2009). Although there are limited clinical studies, increased thrombosis has been reported in human subjects using *ex vivo* perfusion techniques following an acute inhalation exposure (2-4 h) to DE (Lucking et al., 2008). In the current study, DEP has been shown to affect platelet aggregation independent of the other components of the thrombotic response since the model employed has been shown to be driven entirely by platelet aggregation *in vivo* (Tymvios, Jones, Moore, Pitchford, Page & Emerson, 2008) and in the presence of an intact endothelium (Emerson, 2010; Tymvios, Jones, Moore, Pitchford, Page & Emerson, 2008) suggesting that DEP may impact platelets in the absence of endothelial dysfunction or injury.

Inflammation is associated with increased cardiovascular risk (Mameli, Barcellona & Marongiu, 2009). One hypothesis regarding how PM 0.1 may promote thrombosis is therefore by induction of pulmonary inflammation, spill over of inflammatory cytokines into the systemic circulation and consequential platelet activation (Seaton, MacNee, Donaldson & Godden, 1995). In particular, exposure to PM has been linked with thrombotic events driven by IL-6 (Mutlu et al., 2007) and leukocyte influx to the airways (Nemmar, Al-Salam, Dhanasekaran, Sudhadevi & Ali, 2009; Nemmar, Hoet, Dinsdale, Vermynen, Hoylaerts & Nemery, 2003). No increases in neutrophils or IL-6 were observed following DEP exposure in the current study. There was therefore no evidence of an inflammatory response to DEP in our model since no measured hallmarks of pulmonary inflammation were detected. This finding conflicts with some literature since DEP has been reported to cause increases in pulmonary neutrophils 1 h and 6 h following pulmonary delivery in hamsters (Nemmar, Hoet, Dinsdale, Vermynen, Hoylaerts & Nemery, 2003) and rats (Robertson et al., 2012). In contrast, other literature supports our findings by reporting dissociation of the thrombogenic impact of DEP from pulmonary and systemic inflammation (Tabor et al., 2016). Differences in the inflammatory impacts of DEP reported in various studies may be due in part to differences in species studied. Regardless of this, it is apparent that enhanced platelet activation following exposure to DEP can occur independently of quantifiable changes in the inflammatory response in the context of the parameters assessed in the current study.

In terms of human studies, acute exposure to DE caused changes in thrombosis formation but no alterations in systemic cytokines or acute phase proteins (Lucking et al., 2011).

Additionally, no changes in systemic inflammatory markers were detected in healthy men and men with coronary artery disease exposed to DEP for 1 h with intermittent exercise (Mills et al., 2007; Mills et al., 2005) or 2 h after exposure to concentrated ambient particles (CAPs) (Mills et al., 2008). However, increases in systemic IL-6 and TNF- $\alpha$  24 h following exposure to DEP have been reported in humans (Tornqvist et al., 2007), animals (Robertson et al., 2012) and at longer > 24 h time intervals (Nemmar & Inuwa, 2008). Based on the current data, it appears that DEP may not necessarily induce systemic inflammation following acute exposure and therefore may not be the underlying mechanism behind the enhanced platelet aggregation observed in the present work. The possibility that inflammation may drive platelet activation in other models and at different exposure periods cannot be excluded. Since nanoparticles have been suggested to translocate the lung to enter the blood (Kreyling et al., 2009) and DEP can directly enhance platelet activation platelets following physical interaction (Solomon et al., 2013), an alternative or additional hypothesised mechanism is translocation of DEP across the lung epithelium and subsequent exposure and activation of circulating platelets. The ultimate objective in proving this hypothesis would be visualisation of DEP in contact with activating platelets following *i.t* administration or inhalation of DEP but this has not yet been demonstrated and is technically challenging. In contrast to DEP, administration of CB to mice caused significant increases in neutrophils and IL-6 in the BALF and IL-6 in the plasma. Systemic inflammation has similarly been reported following a single 7 h exposure of rats to unfractionated CB (Gilmour et al., 2004). The release of pro-inflammatory cytokines by CB further supports the conclusion that systemic inflammation was not the primary underlying mechanism behind the DEP-induced enhanced platelet response, as CB did not alter platelet aggregation *in vivo* but was associated with systemic inflammation. Thus, PM 0.1-associated inflammation was not linked to platelet aggregation in our study. The contrasting effects of DEP and CB may suggest the constituents present on the surface of DEP to be responsible for the effects on platelet aggregation since the presence of these surface compounds and metals distinguishes the two pollutants. Further work to identify the biological impact of these surface components of DEP will provide valuable information on the mechanisms underlying the health impact of combustion derived air pollutants.

A hypothesised mechanism driving DEP-enhanced platelet aggregation which was explored in this study was that DEP can reduce the bioavailability of endogenous NO and thereby reduce the inhibitory influence NO has on platelets. Acute exposure to DE has been reported to induce endothelial dysfunction *via* uncoupling of eNOS (Knuckles, Lund, Lucas &

Campan, 2008). DEP has also been demonstrated to enhance vasoconstriction, potentially due to reduced NO bioavailability (Langrish et al., 2013). If reduced NO bioavailability were responsible for the effects of DEP on platelet aggregation then DEP would be expected to have no effect on platelet aggregation in eNOS<sup>-/-</sup> mice. Since DEP caused an increase in platelet aggregation in eNOS<sup>-/-</sup> mice and did not appear to influence plasma nitrate and nitrite, there was no evidence of reduced NO bioavailability as an underlying mechanism driving increased platelet aggregation. Since NO negatively regulates platelet activation, we explored whether loss of eNOS in fact led to enhanced platelet aggregation. DEP had no significant effect on platelet aggregation in eNOS<sup>-/-</sup> relative to in WT so that an effect of endogenous NO upon DEP-enhanced platelet aggregation could not be inferred. To explore whether, mechanistically, DEP-induced platelet aggregation could be impacted by NO, we conducted studies *in vitro*. DEP-induced platelet aggregation was significantly inhibited by a NO donor. The extent of inhibition observed was similar to that achieved with collagen and is in keeping with the proposed GPVI-mediated mechanism by which DEP is proposed to activate platelets (Alshehri et al., 2015). The finding of an inhibitory effect of NO in regulating DEP-mediated platelet aggregation *in vitro*, although not supported by the *in vivo* studies in this paper, is sufficient to hypothesise that when platelets are directly exposed to DEP, potentially following translocation across the lung epithelium, NO may act to oppose platelet activation. This suggestion is in keeping with epidemiological data which demonstrates the greatest cardiovascular risk in individuals with risk factors associated with endothelial dysfunction (Brauner et al., 2008; Brook, Brook, Urch, Vincent, Rajagopalan & Silverman, 2002; Mills et al., 2005; Wauters et al., 2013). Further investigation is warranted to ascertain whether NO acts in a physiologically cardioprotective manner to reduce DEP-driven cardiovascular risk. In conclusion, acute airways exposure to DEP can enhance platelet aggregation responses *in vivo* and this may provide a mechanism for the thrombotic effects which are associated with acute exposure to PM. Additionally, the mechanisms underlying this enhanced platelet response do not appear to involve the initiation of systemic inflammation or alterations in NO bioavailability. Our study does, however, generate a hypothesis that healthy individuals may be protected from the harmful cardiovascular effects of DEP that comes into direct contact with platelets due to inhibition of DEP-induced platelet activation by NO.

### **Author contributions**

E Smyth, design, conduct and analysis of experiments, drafting of manuscript; A Solomon, design, conduct and analysis of experiments; M A Birrell, design, conduct and analysis of experiments; M.J. Smallwood, design, conduct and analysis of experiments; P G Wynyard, concept and design of experiments; T D Tetley, concept and design of experiments, drafting of manuscript and revising for critically important intellectual content; M Emerson, concept and design of experiments, drafting of manuscript and revising for critically important intellectual content, final approval of manuscript.

### **Funding**

This work was supported by a Project Grant from the British Heart Foundation (PG/10/80/28605) awarded to M Emerson and T D Tetley.

### **Conflicts of interest**

The authors have no conflicts to declare.

Accepted Article

## REFERENCES

Alexander SP, Davenport AP, Kelly E, Marrion N, Peters JA, Benson HE, *et al.* (2015a). The Concise Guide to PHARMACOLOGY 2015/16: G protein-coupled receptors. *British journal of pharmacology* 172: 5744-5869.

Alexander SP, Fabbro D, Kelly E, Marrion N, Peters JA, Benson HE, *et al.* (2015b). The Concise Guide to PHARMACOLOGY 2015/16: Enzymes. *British journal of pharmacology* 172: 6024-6109.

Alshehri OM, Montague S, Watson S, Carter P, Sarker N, Manne BK, *et al.* (2015). Activation of glycoprotein VI (GPVI) and C-type lectin-like receptor-2 (CLEC-2) underlies platelet activation by diesel exhaust particles and other charged/hydrophobic ligands. *The Biochemical journal* 468: 459-473.

Andersen ZJ, Olsen TS, Andersen KK, Loft S, Kettel M, & Raaschou-Nielsen O (2010). Association between short-term exposure to ultrafine particles and hospital admissions for stroke in Copenhagen, Denmark. *Eur Heart J* 31: 2034-2040.

Apostoli GL, Solomon A, Smallwood MJ, Winyard PG, & Emerson M (2014). Role of inorganic nitrate and nitrite in driving nitric oxide-cGMP-mediated inhibition of platelet aggregation in vitro and in vivo. *J Thromb Haemost* 12: 1880-1889.

Brauner EV, Forchhammer L, Moller P, Barregard L, Gunnarsen L, Afshari A, *et al.* (2008). Indoor particles affect vascular function in the aged: an air filtration-based intervention study. *American journal of respiratory and critical care medicine* 177: 419-425.

Brook RD, Brook JR, Urch B, Vincent R, Rajagopalan S, & Silverman F (2002). Inhalation of fine particulate air pollution and ozone causes acute arterial vasoconstriction in healthy adults. *Circulation* 105: 1534-1536.

Conklin DJ, Kong M, & Committee HEIHR (2015). Part 4. Assessment of plasma markers and cardiovascular responses in rats after chronic exposure to new-technology diesel exhaust in the ACES bioassay. *Res Rep Health Eff Inst*: 111-139; discussion 141-171.

Curtis MJ, Bond RA, Spina D, Ahluwalia A, Alexander SP, Giembycz MA, *et al.* (2015). Experimental design and analysis and their reporting: new guidance for publication in BJP. *British journal of pharmacology* 172: 3461-3471.

Emerson M (2010). Refinement, reduction and replacement approaches to in vivo cardiovascular research. *British journal of pharmacology* 161: 749-754.

Emerson M, Momi S, Paul W, Alberti PF, Page C, & Gresele P (1999). Endogenous nitric oxide acts as a natural antithrombotic agent in vivo by inhibiting platelet aggregation in the pulmonary vasculature. *Thrombosis and haemostasis* 81: 961-966.

Gilmour PS, Ziesenis A, Morrison ER, Vickers MA, Drost EM, Ford I, *et al.* (2004). Pulmonary and systemic effects of short-term inhalation exposure to ultrafine carbon black particles. *Toxicology and applied pharmacology* 195: 35-44.

ICRP (1994). Human respiratory tract model for radiological protection. A report of a Task Group of the International Commission on Radiological Protection. *Ann ICRP* 24: 1-482.

Jones S, Solomon A, Sanz-Rosa D, Moore C, Holbrook L, Cartwright EJ, *et al.* (2010). The plasma membrane calcium ATPase (PMCA) modulates calcium homeostasis, intracellular signalling events and function in platelets. *J Thromb Haemost* 8: 2766-2774.

Kilkenny C, Browne W, Cuthill IC, Emerson M, & Altman DG (2010). Animal research: reporting in vivo experiments: the ARRIVE guidelines. *British journal of pharmacology* 160: 1577-1579.

Knuckles TL, Lund AK, Lucas SN, & Campen MJ (2008). Diesel exhaust exposure enhances venoconstriction via uncoupling of eNOS. *Toxicology and applied pharmacology* 230: 346-351.

Kreyling WG, Semmler-Behnke M, Seitz J, Scymczak W, Wenk A, Mayer P, *et al.* (2009). Size dependence of the translocation of inhaled iridium and carbon nanoparticle aggregates from the lung of rats to the blood and secondary target organs. *Inhalation toxicology* 21: 977-982.

Krishnan RM, Sullivan JH, Carlsten C, Wilkerson HW, Beyer RP, Bammler T, *et al.* (2013). A randomized cross-over study of inhalation of diesel exhaust, hematological indices, and endothelial markers in humans. *Particle and fibre toxicology* 10: 7.

Langrish JP, Unosson J, Bosson J, Barath S, Muala A, Blackwell S, *et al.* (2013). Altered nitric oxide bioavailability contributes to diesel exhaust inhalation-induced cardiovascular dysfunction in man. *J Am Heart Assoc* 2: e004309.

Lucking AJ, Lundback M, Barath SL, Mills NL, Sidhu MK, Langrish JP, *et al.* (2011). Particle traps prevent adverse vascular and prothrombotic effects of diesel engine exhaust inhalation in men. *Circulation* 123: 1721-1728.

Lucking AJ, Lundback M, Mills NL, Faratian D, Barath SL, Pourazar J, *et al.* (2008). Diesel exhaust inhalation increases thrombus formation in man. *European heart journal* 29: 3043-3051.

Mameli A, Barcellona D, & Marongiu F (2009). Rheumatoid arthritis and thrombosis. *Clin Exp Rheumatol* 27: 846-855.

Mills NL, Robinson SD, Fokkens PH, Leseman DL, Miller MR, Anderson D, *et al.* (2008). Exposure to concentrated ambient particles does not affect vascular function in patients with coronary heart disease. *Environmental health perspectives* 116: 709-715.



Mills NL, Tornqvist H, Gonzalez MC, Vink E, Robinson SD, Soderberg S, *et al.* (2007). Ischemic and thrombotic effects of dilute diesel-exhaust inhalation in men with coronary heart disease. *The New England journal of medicine* 357: 1075-1082.

Mills NL, Tornqvist H, Robinson SD, Gonzalez M, Darnley K, MacNee W, *et al.* (2005). Diesel exhaust inhalation causes vascular dysfunction and impaired endogenous fibrinolysis. *Circulation* 112: 3930-3936.

Moore C, Sanz-Rosa D, & Emerson M Distinct role and location of the endothelial isoform of nitric oxide synthase in regulating platelet aggregation in males and females in vivo. *European journal of pharmacology* 651: 152-158.

Moore C, Tymvios C, & Emerson M (2010). Functional regulation of vascular and platelet activity during thrombosis by nitric oxide and endothelial nitric oxide synthase. *Thrombosis and haemostasis* 104: 342-349.

Mutlu GM, Green D, Bellmeyer A, Baker CM, Burgess Z, Rajamannan N, *et al.* (2007). Ambient particulate matter accelerates coagulation via an IL-6-dependent pathway. *The Journal of clinical investigation* 117: 2952-2961.

Nemmar A, Al-Salam S, Dhanasekaran S, Sudhadevi M, & Ali BH (2009). Pulmonary exposure to diesel exhaust particles promotes cerebral microvessel thrombosis: protective effect of a cysteine prodrug l-2-oxothiazolidine-4-carboxylic acid. *Toxicology* 263: 84-92.

Nemmar A, Hoet PH, Dinsdale D, Vermynen J, Hoylaerts MF, & Nemery B (2003). Diesel exhaust particles in lung acutely enhance experimental peripheral thrombosis. *Circulation* 107: 1202-1208.

Nemmar A, & Inuwa IM (2008). Diesel exhaust particles in blood trigger systemic and pulmonary morphological alterations. *Toxicol Lett* 176: 20-30.

Nemmar A, Nemery B, Hoet PH, Vermynen J, & Hoylaerts MF (2003). Pulmonary inflammation and thrombogenicity caused by diesel particles in hamsters: role of histamine. *American journal of respiratory and critical care medicine* 168: 1366-1372.

Nemmar A, Vanbilloen H, Hoylaerts MF, Hoet PH, Verbruggen A, & Nemery B (2001). Passage of intratracheally instilled ultrafine particles from the lung into the systemic circulation in hamster. *American journal of respiratory and critical care medicine* 164: 1665-1668.

Oberdorster G, Ferin J, Gelein R, Soderholm SC, & Finkelstein J (1992). Role of the alveolar macrophage in lung injury: studies with ultrafine particles. *Environmental health perspectives* 97: 193-199.

Oberdorster G, Sharp Z, Atudorei V, Elder A, Gelein R, Lunts A, *et al.* (2002). Extrapulmonary translocation of ultrafine carbon particles following whole-body inhalation exposure of rats. *Journal of toxicology and environmental health Part A* 65: 1531-1543.

Peters A, Dockery DW, Muller JE, & Mittleman MA (2001). Increased particulate air pollution and the triggering of myocardial infarction. *Circulation* 103: 2810-2815.

Raemdonck K, Baker K, Dale N, Dubuis E, Shala F, Belvisi MG, *et al.* (2016). CD4(+) and CD8(+) T cells play a central role in a HDM driven model of allergic asthma. *Respir Res* 17: 45.

Robertson S, Gray GA, Duffin R, McLean SG, Shaw CA, Hadoke PW, *et al.* (2012). Diesel exhaust particulate induces pulmonary and systemic inflammation in rats without impairing endothelial function *ex vivo* or *in vivo*. *Particle and fibre toxicology* 9: 9.

Seaton A, MacNee W, Donaldson K, & Godden D (1995). Particulate air pollution and acute health effects. *Lancet* 345: 176-178.

Solomon A, Smyth E, Mitha N, Pitchford S, Vydyanath A, Luther PK, *et al.* (2013). Induction of platelet aggregation after a direct physical interaction with diesel exhaust particles. *J Thromb Haemost* 11: 325-334.

Southan C, Sharman JL, Benson HE, Faccenda E, Pawson AJ, Alexander SP, *et al.* (2016). The IUPHAR/BPS Guide to PHARMACOLOGY in 2016: towards curated quantitative interactions between 1300 protein targets and 6000 ligands. *Nucleic Acids Res* 44: D1054-1068.

Tabor CM, Shaw CA, Robertson S, Miller MR, Duffin R, Donaldson K, *et al.* (2016). Platelet activation independent of pulmonary inflammation contributes to diesel exhaust particulate-induced promotion of arterial thrombosis. *Particle and fibre toxicology* 13: 6.

Tornqvist H, Mills NL, Gonzalez M, Miller MR, Robinson SD, Megson IL, *et al.* (2007). Persistent endothelial dysfunction in humans after diesel exhaust inhalation. *American journal of respiratory and critical care medicine* 176: 395-400.

Tymvios C, Jones S, Moore C, Pitchford SC, Page CP, & Emerson M (2008). Real-time measurement of non-lethal platelet thromboembolic responses in the anaesthetized mouse. *Thrombosis and haemostasis* 99: 435-440.

Wauters A, Dreyfuss C, Pochet S, Hendrick P, Berkenboom G, van de Borne P, *et al.* (2013). Acute exposure to diesel exhaust impairs nitric oxide-mediated endothelial vasomotor function by increasing endothelial oxidative stress. *Hypertension* 62: 352-358.

Xu Y, Barregard L, Nielsen J, Gudmundsson A, Wierzbicka A, Axmon A, *et al.* (2013). Effects of diesel exposure on lung function and inflammation biomarkers from airway and peripheral blood of healthy volunteers in a chamber study. *Particle and fibre toxicology* 10: 60.

Accepted Article

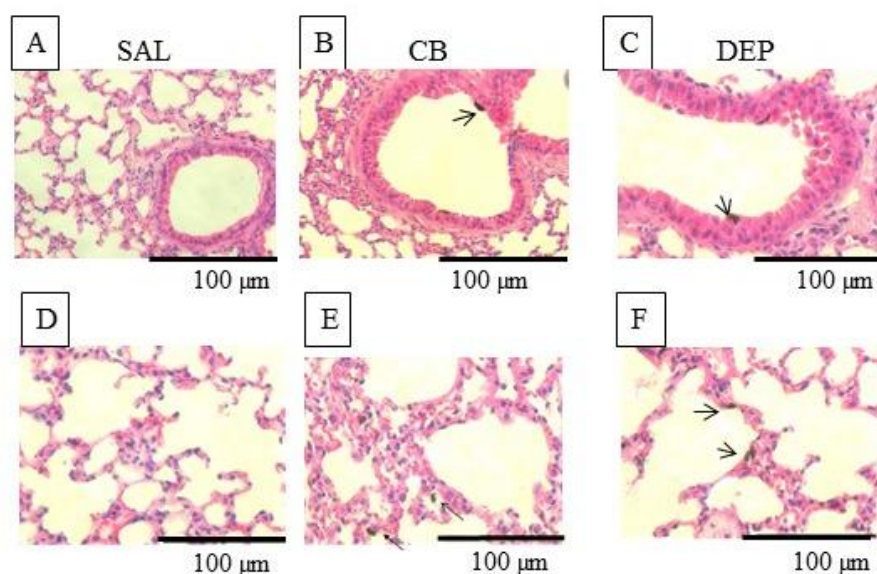


Fig. 1. Deposition of diesel exhaust particles (DEP) and carbon black (CB) in mouse lungs following intratracheal (*i.t.*) instillation. Anaesthetised WT mice were *i.t.* instilled with DEP (C + F) and CB (B + E; 25 µg/mouse) or saline (NaCl 0.9 %) (A + D). Mice were killed *via* cervical dislocation immediately after *i.t.* instillation and their lungs were removed and fixed in formalin. Samples were embedded, sectioned and stained with hematoxylin and eosin. Slides were visualised on a light microscope at X 20, 000 and X 40, 000. Sections from 5 mice exposed to each treatment were observed and representative images are shown. DEP = diesel exhaust particles, CB = carbon black, SAL = saline.

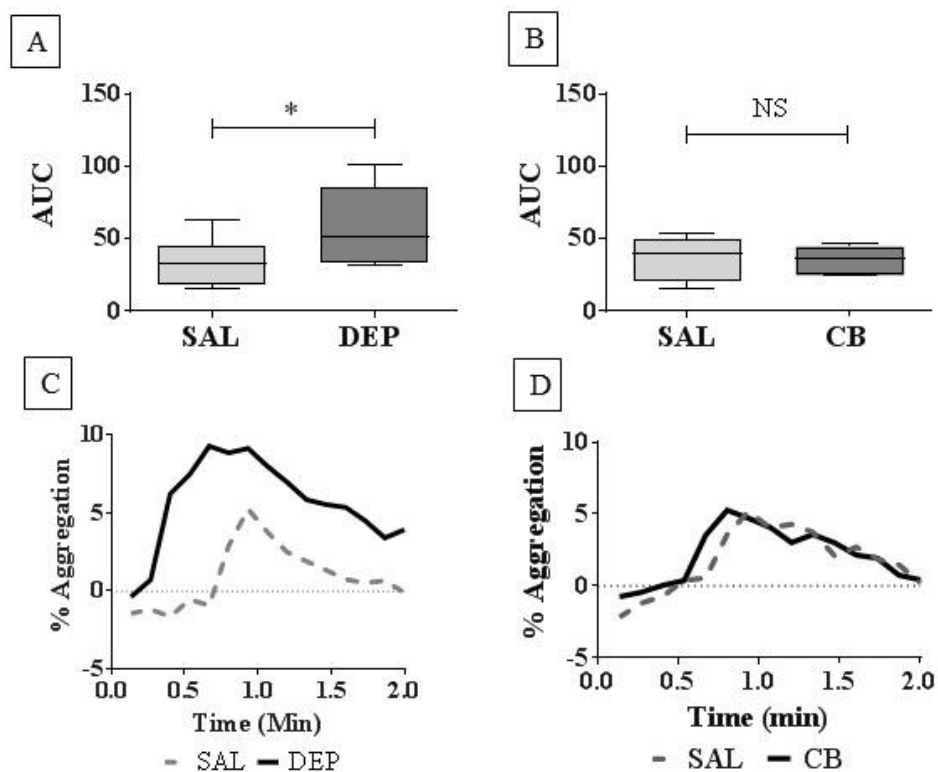


Fig. 2. Platelet aggregation *in vivo* following intratracheal (*i.t.*) instillation of diesel exhaust particles (DEP), carbon black (CB) or saline (SAL). WT mice were *i.t.* instilled with DEP, CB (25  $\mu\text{g}/\text{mouse}$ ) or sterile saline (0.9 %). Isolated platelets were radiolabelled with  $^{111}\text{In}$ indium oxine and infused into mice 4 h following *i.t.* instillation, prior to injection with collagen (50  $\mu\text{g kg}^{-1}$  *i.v.*). Responses were recorded as changes in counts for 10 min. Platelet aggregation was assessed by changes in percentage maximum increase in scintillation counts (A+B) or area under the curve (AUC) (C+D). Data are presented as median  $\pm$  interquartile range (A-B) or representative traces (C-D), \* $P < 0.05$  compared using a K-W test with Dunn's comparison. NS = non-significant,  $n = 8$  (A) or 6 (B).

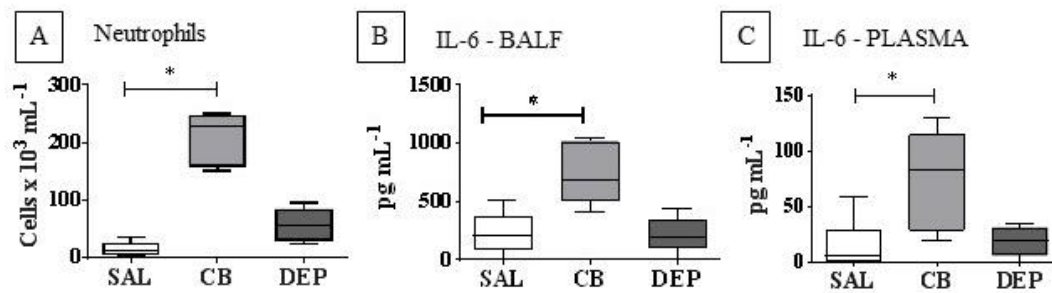


Fig. 3. Inflammatory profile in bronchoalveolar lavage fluid and plasma following intratracheal (*i.t.*) instillation of carbon black (CB), diesel exhaust particles (DEP) or saline (SAL). WT mice were *i.t.* instilled with DEP, CB (25  $\mu$ g/mouse) or sterile saline (0.9 % NaCl). Bronchoalveolar lavage fluid (BALF) was obtained 4 h following *i.t.* instillation *via* catheterisation of the trachea and instillation of 400  $\mu$ l of sterile saline (NaCl 0.9 %) for 30 s (x 3). Blood was obtained 4 h following *i.t.* instillation *via* cardiac puncture. Neutrophils (A) and IL-6 (B) levels were measured in the BALF and IL-6 levels were measured in the plasma (C). Data are presented as median and interquartile range. \* $P < 0.05$  compared using a K-W test with Dunn's comparison,  $n = 5$  (A) or 6 (B-C).

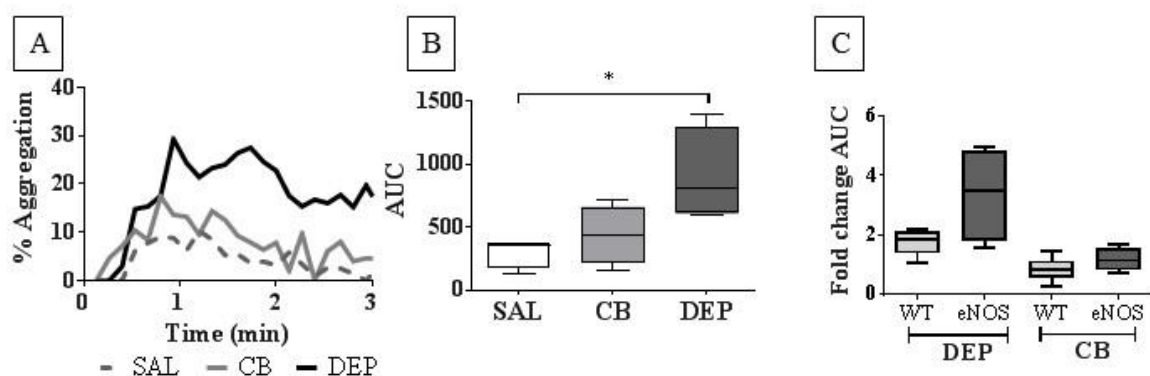


Fig. 4. Platelet aggregation *in vivo* in *eNOS*<sup>-/-</sup> mice following intratracheal (*i.t.*) instillation of diesel exhaust particles (DEP), carbon black (CB) or saline (SAL). *eNOS*<sup>-/-</sup> mice were *i.t.* instilled with DEP, CB (25  $\mu\text{g}/\text{mouse}$ ) or sterile saline (0.9 %). Isolated platelets were radiolabelled with <sup>111</sup>indium oxine and infused into mice 4 h following *i.t.* instillation, prior to injection with collagen (50  $\mu\text{g kg}^{-1}$ ). Responses were recorded for 10 min as changes in counts over time. Platelet aggregation was assessed by changes in percentage increase in scintillation counts (A) or area under the curve (AUC) (B). Fold change from the saline control in percentage maximum increase in scintillation counts (C) following *i.t.* instillation of DEP and CB in WT and *eNOS*<sup>-/-</sup> mice. Data are presented as median  $\pm$  interquartile range (B + C) or representative traces (A). \* $P < 0.05$  compared using a K-W test with Dunn's comparison or Mann-Whitney signed rank test,  $n = 6$  (A) or 5 (B).

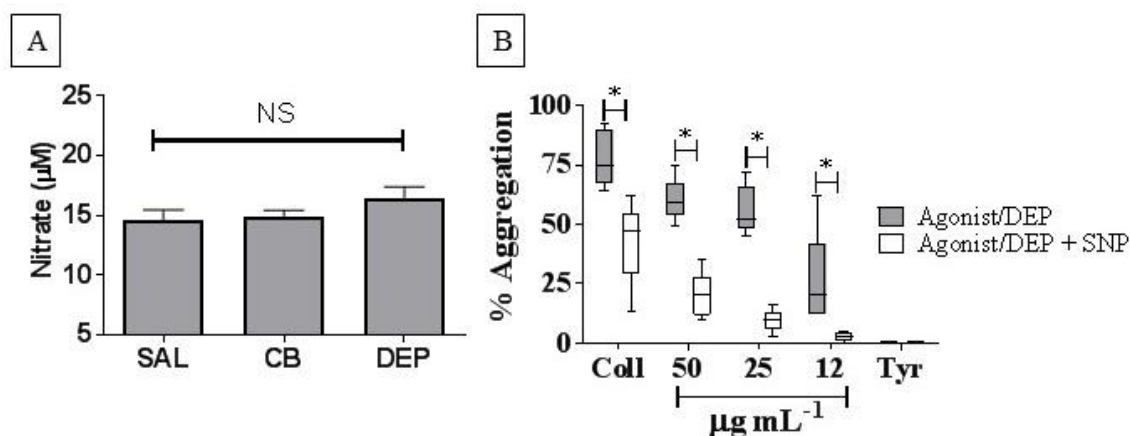


Fig. 5. The effects of carbonaceous nanoparticles on NO bioavailability and impact of NO on diesel exhaust particle (DEP)-induced platelet aggregation. Mice were *i.t* instilled with DEP, carbon black (CB, 25  $\mu\text{g}/\text{mouse}$ ) or sterile saline (SAL, 0.9 %). Blood was taken *via* cardiac puncture 4-5 h following exposure and nitrate and nitrite levels were measured in plasma using gas-phase chemiluminescence (nitrite levels were below the detection limit of the assay, 50 nM and are therefore data is presented as nitrate concentration) (A). Isolated human platelets were exposed to DEP (12-50  $\mu\text{g mL}^{-1}$ ) or collagen (Coll, 5  $\mu\text{g mL}^{-1}$ ) following a 5 min incubation with either a NO donor sodium nitroprusside (SNP, 10  $\mu\text{M}$ ) or Tyrode's buffer (Tyr, B). Changes in light transmission were measured for 3 min. Data are presented as box-and-whisker plots (A) and as median  $\pm$  interquartile range (B), NS = non-significant compared using a K-W test with Dunn's comparison (A), \* $P < 0.05$  compared against time matched controls using a Wilcoxon signed rank test (B). n = 6 (A) or 5 (B).