



## Towards a Holarctic synthesis of peatland testate amoeba ecology: Development of a new continental-scale palaeohydrological transfer function for North America and comparison to European data

Matthew J. Amesbury<sup>a, b, \*</sup>, Robert K. Booth<sup>c</sup>, Thomas P. Roland<sup>a</sup>, Joan Bunbury<sup>d, e</sup>, Michael J. Clifford<sup>f</sup>, Dan J. Charman<sup>a</sup>, Suzanne Elliot<sup>g</sup>, Sarah Finkelstein<sup>h</sup>, Michelle Garneau<sup>i</sup>, Paul D.M. Hughes<sup>j</sup>, Alexandre Lamarre<sup>k</sup>, Julie Loisel<sup>l</sup>, Helen Mackay<sup>m</sup>, Gabriel Magnan<sup>i</sup>, Erin R. Markel<sup>c</sup>, Edward A.D. Mitchell<sup>n, o</sup>, Richard J. Payne<sup>p, q</sup>, Nicolas Pelletier<sup>r</sup>, Helen Roe<sup>g</sup>, Maura E. Sullivan<sup>c</sup>, Graeme T. Swindles<sup>s</sup>, Julie Talbot<sup>t</sup>, Simon van Bellen<sup>i</sup>, Barry G. Warner<sup>u</sup>

<sup>a</sup> Geography, College of Life and Environmental Sciences, University of Exeter, UK

<sup>b</sup> Environmental Change Research Unit (ECRU), Faculty of Biological and Environmental Sciences, University of Helsinki, Finland

<sup>c</sup> Earth and Environmental Sciences, Lehigh University, USA

<sup>d</sup> Department of Geography and Earth Science, University of Wisconsin, La Crosse, USA

<sup>e</sup> Department of Geography, University of Toronto, Canada

<sup>f</sup> Desert Research Institute, Nevada, USA

<sup>g</sup> School of Natural and Built Environment, Queen's University Belfast, UK

<sup>h</sup> Department of Earth Sciences, University of Toronto, Canada

<sup>i</sup> Geotop, Université du Québec à Montréal, Canada

<sup>j</sup> Geography and Environment, University of Southampton, UK

<sup>k</sup> Environment and Climate Change Canada, Canada

<sup>l</sup> Department of Geography, Texas A&M University, USA

<sup>m</sup> School of Geography, Politics and Sociology, University of Newcastle, UK

<sup>n</sup> Institute of Biology, Faculty of Science, University of Neuchâtel, Switzerland

<sup>o</sup> Botanical Garden of Neuchâtel, Switzerland

<sup>p</sup> Environment, University of York, UK

<sup>q</sup> Department of Biology, Penza State University, Russia

<sup>r</sup> Department of Geography and Environmental Studies, Carleton University, Canada

<sup>s</sup> School of Geography, University of Leeds, UK

<sup>t</sup> Department of Geography, Université de Montréal, Canada

<sup>u</sup> Earth and Environmental Sciences, University of Waterloo, Canada

### ARTICLE INFO

#### Article history:

Received 1 June 2018

Received in revised form

24 September 2018

Accepted 24 October 2018

Available online 3 November 2018

#### Keywords:

North America

Testate amoebae

Peatland

Water table

Transfer function

Ecology

### ABSTRACT

Fossil testate amoeba assemblages have been used to reconstruct peatland palaeohydrology for more than two decades. While transfer function training sets are typically of local-to regional-scale in extent, combining those data to cover broad ecohydrological gradients, from the regional-to continental- and hemispheric-scales, is useful to assess if ecological optima of species vary geographically and therefore may have also varied over time. Continental-scale transfer functions can also maximise modern analogue quality without losing reconstructive skill, providing the opportunity to contextualise understanding of purely statistical outputs with greater insight into the biogeography of organisms. Here, we compiled, at moderate taxonomic resolution, a dataset of nearly 2000 modern surface peatland testate amoeba samples from 137 peatlands throughout North America. We developed transfer functions using four model types, tested them statistically and applied them to independent palaeoenvironmental data. By subdividing the dataset into eco-regions, we examined biogeographical patterns of hydrological optima and species distribution across North America. We combined our new dataset with data from Europe to create a combined transfer function. The performance of our North-American transfer function was equivalent to published models and reconstructions were comparable to those developed using regional

\* Corresponding author. Geography, College of Life and Environmental Sciences, University of Exeter, UK.

E-mail address: [m.j.amesbury@exeter.ac.uk](mailto:m.j.amesbury@exeter.ac.uk) (M.J. Amesbury).

training sets. The new model can therefore be used as an effective tool to reconstruct peatland palaeohydrology throughout the North American continent. Some eco-regions exhibited lower taxonomic diversity and some key indicator taxa had restricted ranges. However, these patterns occurred against a background of general cosmopolitanism, at the moderate taxonomic resolution used. Likely biogeographical patterns at higher taxonomic resolution therefore do not affect transfer function performance. Output from the combined North American and European model suggested that any geographical limit of scale beyond which further compilation of peatland testate amoeba data would not be valid has not yet been reached, therefore advocating the potential for a Holarctic synthesis of peatland testate amoeba data. Extending data synthesis to the tropics and the Southern Hemisphere would be more challenging due to higher regional endemism in those areas.

© 2018 The Authors. Published by Elsevier Ltd. This is an open access article under the CC BY license (<http://creativecommons.org/licenses/by/4.0/>).

## 1. Introduction

Testate amoebae are a polyphyletic group of microscopic, unicellular protists that occur globally in a range of soils, rivers, lakes and wetlands, including ombrotrophic peatlands – environments which are frequently used to reconstruct Holocene palaeohydrological change (Mitchell et al., 2008). These reconstructions are based on a transfer function approach, inherent in which is a robust understanding of peatland testate amoeba ecology, particularly as it relates to target reconstruction variables, principally water table depth (WTD).

Local- or regional-scale transfer function models around the globe have provided robust palaeohydrological reconstructions based on the strong empirical relationship between independent (i.e. WTD) and response (i.e. testate amoeba community change) variables (e.g. Swindles et al., 2009, 2014; van Bellen et al., 2014; Li et al., 2015). However, reconstruction magnitude can vary when local- and regional-scale models are applied outside of their training set range (Turner et al., 2013), providing a strong motivation to develop broader-scale, compiled models that provide standard reconstruction tools with directly comparable results.

Modern analogues from sites close to a core location may potentially better represent the contemporary environment than those from more distant sites in the present day. However, as we go back in time through different climate and ecological boundary conditions, as any transfer function reconstruction inevitably aims to do, local modern analogues may be less appropriate and it becomes more likely that better analogues will be found in different regions. Therefore, whilst local- and regional-scale models perform well statistically in cross-validation, the same performance cannot be assumed for downcore reconstructions and large-scale datasets/models should yield more reliable reconstructions for any given location given their greater range of modern analogues. However, as the geographical extent of training sets is increased to the continental-, hemispheric- or even global-scales, it may become more problematic to effectively model independent and response variable relationships due to the introduction of confounding factors such as latitude and temperature effects, secondary environmental gradients or non-linear processes such as permafrost and fire. Therefore, there may be a geographical range limit beyond which the compilation of modern testate amoeba and associated environmental data is no longer beneficial for model development. Recently, it has been shown that the development of continental-scale transfer functions may have advantages over the use of local- or regional-scale models (Amesbury et al., 2016). In particular, large training sets (i.e. > 1000 samples) capture a greater range of variability in target environmental variables and include more modern analogues for taxa that may be abundant in fossil records but that can be rare or absent in modern datasets (Charman et al., 2007; Swindles et al., 2015a), potentially improving

palaeohydrological reconstructions.

In addition, although individual transfer functions statistically model the relationship between modern testate amoeba assemblages and WTD, a broader contextual understanding of peatland testate amoeba ecology and biogeography is important. For example, recent research has shown that certain taxa, or groups of taxa, may react to environmental change at different timescales (Sullivan and Booth, 2011; Marcisz et al., 2014) or have geographically restricted or skewed ranges (Booth and Zygmunt, 2005; Amesbury et al., 2016; Beyens and Bobrov, 2016), even extending to regional endemism, particularly in the tropics and Southern Hemisphere (Smith and Wilkinson, 2007; van Bellen et al., 2014; Reczuga et al., 2015). However, these ecological and biogeographical intricacies are not explicit in strictly statistical reconstructions. Indeed, research has shown that continental-scale geographical patterns of both genotypic and phenotypic diversity exist within seemingly cosmopolitan taxa (Heger et al., 2013; Roland et al., 2017; Singer et al., 2018). In the case of *Hyalosphenia papilio* (Heger et al., 2013), this is a finding potentially supported by a regionally skewed distribution of the same taxon across Europe (Amesbury et al., 2016).

Greater insight into wide-scale biogeographical patterns of soil protists is a fundamental research domain (Geisen et al., 2017). An increasing number of studies have used protists (Foissner, 2006, 2008), and specifically testate amoebae (e.g. Smith and Wilkinson, 2007; Fournier et al., 2015; Fernández et al., 2016; Lara et al., 2016), to argue against the 'everything is everywhere: but the environment selects' paradigm (Baas Becking, 1934; see also De Wit and Bouvier, 2006; O'Malley, 2007, 2008). Research communities can move towards a broader understanding of these patterns by working collaboratively to make use of the ever-increasing amount of data from individual studies that can be compiled and used to both develop new, robust reconstruction tools (Amesbury et al., 2016), as well as begin to provide insight into important biogeographical debates (Smith et al., 2008). In addition, an understanding of wide-scale peatland testate amoeba ecology and biogeography is important in order to provide robust regional-to continental-scale palaeoclimatic interpretation of 1) palaeo-data compilations (e.g. Swindles et al., 2013), 2) studies from individual sites or groups of sites aiming to study the Holocene evolution of regional-scale climate systems (e.g. Magnan and Garneau, 2014; van Bellen et al., 2016), 3) studies investigating anthropogenic drainage (e.g. Laggoun-Défarge et al., 2008; Payne et al., 2010; Talbot et al., 2010) and 4) studies of ecohydrological changes from specific climatic disturbances such as permafrost thaw (Lamarre et al., 2012; Swindles et al., 2015b; Pelletier et al., 2017; Zhang et al., 2018).

Building on the development of a recent pan-European transfer function (Amesbury et al., 2016), here we apply a similar approach to the North American continent. Through a wide collaborative

network, we have compiled almost 2000 published and unpublished testate amoeba surface samples from 137 sites covering 34° of latitude and almost 100° of longitude. Our objectives are to (1) describe the ecology of peatland testate amoebae in North America in terms of the key environmental variable, water table depth; (2) develop a new, rigorously tested continental-scale transfer function for reconstructing ombrotrophic peatland palaeohydrology; and (3) as the first step towards a Holarctic synthesis, assess the ecology and biogeography of testate amoeba across two continents by combining our new North-American dataset with data from a pan-European synthesis (Amesbury et al., 2016) to create a combined dataset with >3700 samples in total.

## 2. Methods

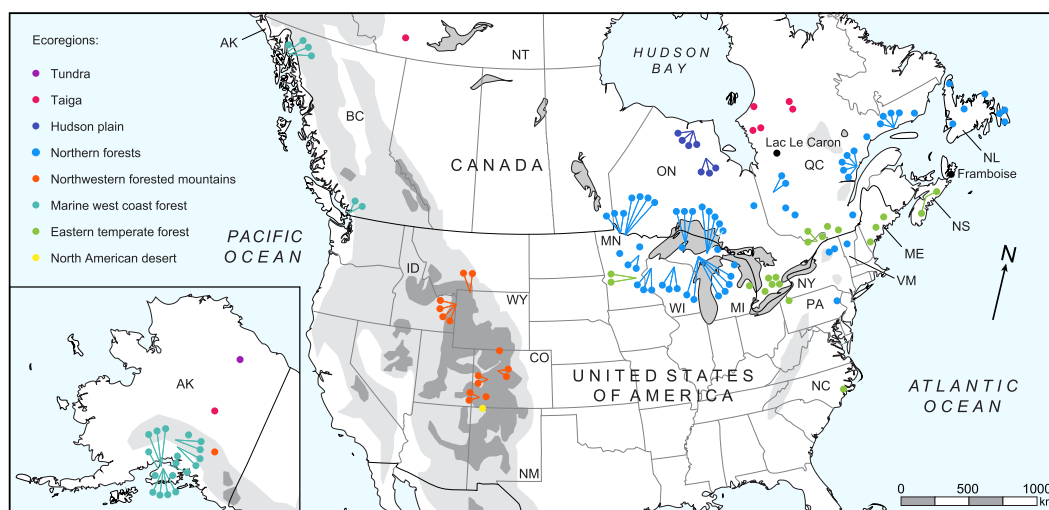
### 2.1. Data compilation and taxonomy

We collated a total dataset of 1956 modern surface samples from 137 peatlands located throughout the Canada and the USA (Fig. 1; Table 1). Peatlands included were predominately *Sphagnum*-dominated and ombrotrophic, but data from other site types was also included (e.g. Booth and Zygmunt, 2005). Data were compiled from 15 published sources in addition to four unpublished datasets (Table 1). All original datasets, including previously unpublished datasets, in percentage data form and a majority also as raw count data, have been archived and are freely available on the Neotoma Paleocology Database ([www.neotomadb.org](http://www.neotomadb.org)). Raw count data was available for 1844 of 1956 samples (excluding the datasets of Warner, 1987 and Payne et al., 2006). For those samples, the mean count was 148 individuals. Only 65 samples had a count <100, with a minimum count in any one sample of 52 individuals. All testate amoeba surface samples had an associated water table depth (WTD) value, with a smaller number (n = 1859) also having an associated pH value. Although some datasets contained other potential environmental variables (e.g. electrical conductivity, vegetation type), these data were not frequent enough across the entire dataset to permit inclusion in the data analysis.

Since the multiple analysts involved in the original data collection (publication dates ranging over 30 years from 1987 to 2017) applied slightly varying taxonomic schemes, it was necessary to merge data into a coherent taxonomy that was valid across all datasets. To do this, we followed the precedent set by Amesbury

et al. (2016) in a compilation of European peatland testate amoeba data, taking a low-resolution approach and merging like taxa into groups wherever necessary. However, due to the generally greater consistency between original taxonomies than was the case for Amesbury et al. (2016), the relative extent of grouping required here was less, with a total of 72 taxa in the complete merged dataset, of which 25 were groupings containing multiple taxa (Table 2). Despite the improvement in taxonomic resolution from Amesbury et al. (2016), individual analysts should not count samples to the taxonomic scheme used here, but rather define individual taxa to as great an extent as possible (e.g. particularly within *Corythion* – *Trinema* type), grouping into this scheme for statistical analysis only. Exceptions to the taxonomy of Amesbury et al. (2016), permitted by the relative taxonomic consistency of the original datasets, were as follows:

1. *Arcella artocrea* was consistently identified in addition to *Arcella arenaria* type and *Arcella catinus* type, so this division remained. However;
2. *Arcella catinus* type was identified in most datasets, whereas *Arcella arenaria* type was only identified in two datasets, that did not include *Arcella catinus* type. Therefore, *Arcella arenaria* type was merged into *Arcella catinus* type;
3. *Centropyxis cassis* type and *Centropyxis platystoma* type were consistently identified across all datasets, so these divisions remained. *Centropyxis aerophila* type was only identified in two datasets so was merged into *Centropyxis cassis* type;
4. *Cyclopyxis arcelloides* type was consistently split into *Cyclopyxis arcelloides* type, *Diffflugia globulosa* type and *Phryganella acropodia* type so these divisions remained;
5. *Diffflugia pulex* type and *Hyalosphenia minuta* were consistently identified in addition to *Cryptodiffflugia sacculus*, so all taxa remained and were not grouped into *Cryptodiffflugia sacculus* type;
6. *Diffflugia pristis* type, *Pseudodiffflugia fulva* type and *Pseudodiffflugia fascicularis* type were consistently identified in addition to *Diffflugia lucida* type, so all taxa remained and were not grouped into *Diffflugia lucida* type;
7. *Diffflugia bacillifera* type and *Diffflugia rubescens* type were consistently identified in addition to *Diffflugia oblonga* type, so all taxa remained and were not grouped into *Diffflugia oblonga* type;



**Fig. 1.** Map showing the location of 137 sites included in the study (see Table 1 for full details). Sites are colour-coded by United States Environmental Protection Agency (EPA) ecoregion (see text for details). Locations of two independent palaeo records at Lac Le Caron, Québec and Framboise, Nova Scotia are also shown (black spots). For references to colour, readers are referred to the online version of the article. (For interpretation of the references to colour in this figure legend, the reader is referred to the Web version of this article.)

**Table 1**  
Site details and meta-data. Data ordered by year of publication/surname and listed alphabetically by site name. For Warner and Charman (1994), sample codes could not be confidently linked to specific sites, so only the total number of samples in the dataset is shown.

Reference	State/Province, Country	Site name	Lat (°)	Long (°)	Number of samples
Warner (1987)	Ontario, Canada	Chesney	43.226	-80.644	4
Warner (1987)	Ontario, Canada	Ellice Huckleberry Marsh	43.481	-80.949	2
Warner (1987)	Ontario, Canada	Kossuth	43.449	-80.359	3
Warner (1987)	Ontario, Canada	Sifton	42.970	-81.323	6
Warner (1987)	Ontario, Canada	Summit Muskeg Preserve	43.231	-80.052	7
Charman and Warner (1992)	Ontario, Canada	Wally Creek	49.076	-80.537	108
Warner and Charman (1994)	Minnesota, USA	Beckman Lake	45.421	-93.186	49
Warner and Charman (1994)	Ontario, Canada	Buriss	48.666	-93.632	
Warner and Charman (1994)	Minnesota, USA	Cedar Lake	45.412	-93.198	
Warner and Charman (1994)	Ontario, Canada	Emo	48.702	-93.825	
Warner and Charman (1994)	Ontario, Canada	Fort Frances Airport	48.545	-93.398	
Warner and Charman (1994)	Ontario, Canada	Kehl Lake	48.579	-93.576	
Warner and Charman (1994)	Ontario, Canada	Pinewood	48.754	-94.290	
Warner and Charman (1994)	Ontario, Canada	Rainy River	48.758	-94.533	
Warner and Charman (1994)	Ontario, Canada	Stratton	48.680	-94.124	
Booth (2001), Booth (2002)	Michigan, USA	Grand Traverse Bay	47.166	-88.255	40
Booth (2001), Booth (2002)	Michigan, USA	Tahquamenon	46.475	-84.995	55
Booth (2002), Booth (2008)	Michigan, USA	Adam's Trail	46.547	-86.06	21
Booth (2002)	Michigan, USA	Au Train	46.548	-86.059	23
Booth (2002)	Michigan, USA	Independence	47.419	-88.01	29
Booth (2002), Booth (2008)	Michigan, USA	Minden	43.61	-82.836	43
Booth (2002), Booth (2008)	Michigan, USA	North Rhody	46.583	-86.073	24
Booth (2002)	Michigan, USA	Partridge	47.42	-88.008	22
Booth (2002), Booth (2008)	Michigan, USA	South Rhody	46.565	-86.075	32
Booth (2002)	Michigan, USA	Uncle Sam	47.419	-88.016	8
Booth (2002)	Michigan, USA	West Adam's Trail	46.553	-86.105	4
Booth and Zygmont (2005)	Colorado, USA	Burro Bridge	37.846	-107.727	8
Booth and Zygmont (2005)	New Mexico, USA	Chatanooga	36.961	-107.693	14
Booth and Zygmont (2005)	Wyoming, USA	East Lily	44.954	-109.696	10
Booth and Zygmont (2005)	Colorado, USA	Henderson A	39.367	-106.583	5
Booth and Zygmont (2005)	Colorado, USA	Henderson B	39.354	-106.603	8
Booth and Zygmont (2005)	Colorado, USA	Keystone	38.867	-107.04	9
Booth and Zygmont (2005)	Wyoming, USA	Lilypad	44.164	-111.008	15
Booth and Zygmont (2005)	Wyoming, USA	Little Moose	44.976	-109.757	12
Booth and Zygmont (2005)	Idaho, USA	Lizard	44.156	-111.071	5
Booth and Zygmont (2005)	Wyoming, USA	Robinson	44.167	-111.071	15
Booth and Zygmont (2005)	Colorado, USA	Shafer	40.866	-106.605	9
Booth and Zygmont (2005)	Colorado, USA	South Mineral	37.816	-107.723	8
Booth and Zygmont (2005)	Colorado, USA	Splain's Gulch	38.834	-107.076	7
Booth and Zygmont (2005)	Colorado, USA	Wager Gulch	37.878	-107.369	9
Booth and Zygmont (2005)	Idaho, USA	West Robinson	44.167	-111.075	5
Payne et al. (2006)	Alaska, USA	Bicentennial Park	61.160	-149.743	28
Payne et al. (2006)	Alaska, USA	Clam Gulch	60.239	-151.375	3
Payne et al. (2006)	Alaska, USA	Houston	61.640	-149.863	9
Payne et al. (2006)	Alaska, USA	Jigsaw Lake	60.739	-150.490	18
Payne et al. (2006)	Alaska, USA	Kachemak	59.792	-151.169	8
Payne et al. (2006)	Alaska, USA	Moose Pass	60.509	-149.442	8
Payne et al. (2006)	Alaska, USA	Sheep Creek	62.003	-150.055	9
Payne et al. (2006)	Alaska, USA	Sterling	60.528	-150.518	8
Booth (2008)	Michigan, USA	Big Red Pine	46.253	-86.623	10
Booth (2008)	New York, USA	Bloomingdale	44.383	-74.139	19
Booth (2008)	Wisconsin, USA	Crystal	46.007	-89.605	13
Booth (2008)	Minnesota, USA	Ely	47.446	-92.436	9
Booth (2008)	Wisconsin, USA	Falliston	45.995	-89.613	15
Booth (2008)	Michigan, USA	Grimes	46.276	-86.65	10
Booth (2008)	Michigan, USA	Herron	45.102	-83.639	10
Booth (2008)	Michigan, USA	Hole-in-bog	47.3	-94.249	14
Booth (2008)	Wisconsin, USA	Hornet	46.077	-92.12	15
Booth (2008)	Michigan, USA	Island Camp	46.272	-86.647	11
Booth (2008)	Michigan, USA	Kentucky Trail	46.247	-86.601	10
Booth (2008)	Maine, USA	Orono	44.871	-68.727	18
Booth (2008)	Vermont, USA	Peacham	44.292	-72.873	12
Booth (2008)	Michigan, USA	Small Red Pine	46.238	-86.617	5
Booth (2008)	Wisconsin, USA	Small Sarracenia	46.093	-92.115	10
Booth (2008)	New York, USA	Spring Pond	44.368	-74.499	26
Booth (2008)	Wisconsin, USA	Spruce	46.095	-92.112	8
Booth (2008)	Minnesota, USA	Toivola A	46.927	-92.795	13
Booth (2008)	Minnesota, USA	Toivola B	46.986	-92.888	6
Booth (2008)	Wisconsin, USA	Trout Lake	46.004	-89.594	68
Booth (2008)	Michigan, USA	Upper Twin	46.276	-86.647	10
Booth et al. (2008)	North Carolina, USA	Catfish Pocosin	34.919	-77.088	35
Markel et al. (2010)	Alaska, USA	Brown's Lake	60.471	-150.728	38
Markel et al. (2010)	Alaska, USA	Canaday	64.519	-146.911	8

Table 1 (continued)

Reference	State/Province, Country	Site name	Lat (°)	Long (°)	Number of samples
Markel et al. (2010)	Alaska, USA	Caswell	62.004	-150.060	5
Markel et al. (2010)	Alaska, USA	Funny River	60.415	-150.901	8
Markel et al. (2010)	Alaska, USA	Gate Creek	62.333	-150.545	8
Markel et al. (2010)	Alaska, USA	Jake Lake	62.430	-150.704	7
Markel et al. (2010)	Alaska, USA	Gas Field	60.445	-151.246	24
Markel et al. (2010)	Alaska, USA	Marathon B	60.603	-151.211	5
Markel et al. (2010)	Alaska, USA	No Name	60.640	-151.08	5
Markel et al. (2010)	Alaska, USA	Parks Highway	63.081	-149.527	7
Markel et al. (2010)	Alaska, USA	Richardson	62.604	-145.448	3
Markel et al. (2010)	Alaska, USA	Teardrop Lake	60.472	-150.700	6
Sullivan and Booth (2011)	Pennsylvania, USA	Tannersville	41.037	-75.266	47
Sullivan and Booth (2011)	Pennsylvania, USA	Titus	41.952	-79.759	20
Amesbury et al. (2013)	Newfoundland, Canada	Burnt Village	51.126	-55.927	25
Amesbury et al. (2013)	Nova Scotia, Canada	Colin	45.108	-63.895	27
Amesbury et al. (2013), Charman and Warner (1997)	Newfoundland, Canada	Crooked	49.139	-56.111	14
Amesbury et al. (2013)	Quebec, Canada	Kegaska	50.211	-61.25	4
Amesbury et al. (2013), Lamarre et al. (2013)	Quebec, Canada	Lebel	49.123	-68.292	19
Amesbury et al. (2013), Lamarre et al. (2013)	Quebec, Canada	Manic	49.123	-68.292	30
Amesbury et al. (2013)	Newfoundland, Canada	Nordan's Pond	49.161	-53.598	20
Amesbury et al. (2013), Charman and Warner (1997)	Newfoundland, Canada	Ocean Pond	47.427	-53.438	9
Amesbury et al. (2013)	Nova Scotia, Canada	Petite	45.144	-63.937	16
Amesbury et al. (2013), Lamarre et al. (2013)	Quebec, Canada	Plaine	50.27	-63.54	21
Amesbury et al. (2013)	Maine, USA	Saco	43.553	-70.471	26
Amesbury et al. (2013), Charman and Warner (1997)	Newfoundland, Canada	Sam's River	46.731	-53.519	6
Amesbury et al. (2013)	Quebec, Canada	Sept Isles	50.202	-66.601	6
Amesbury et al. (2013)	Maine, USA	Sidney	44.388	-69.788	24
Amesbury et al. (2013), Charman and Warner (1997)	Newfoundland, Canada	Stephenville	48.55	-58.434	6
Amesbury et al. (2013)	Quebec, Canada	Tourbiere de l'Aeroport	50.275	-63.614	7
Amesbury et al. (2013), Charman and Warner (1997)	Newfoundland, Canada	Witless Bay	47.337	-53.017	4
Lamarre et al. (2013)	Quebec, Canada	Abeille	54.115	-73.327	6
Lamarre et al. (2013)	Quebec, Canada	Baie-M	49.093	-68.243	11
Lamarre et al. (2013)	Quebec, Canada	Baie Commeau	49.097	-68.244	7
Lamarre et al. (2013)	Quebec, Canada	Frontenac	45.966	-71.139	10
Lamarre et al. (2013)	Quebec, Canada	Kuujuarapik	55.226	-77.696	10
Lamarre et al. (2013)	Quebec, Canada	La Grande Bog	53.65	-77.726	10
Lamarre et al. (2013)	Quebec, Canada	La Grande Fen	53.677	-78.216	10
Lamarre et al. (2013)	Quebec, Canada	Lebel-G	49.101	-68.219	10
Lamarre et al. (2013)	Quebec, Canada	Matagami 1	49.752	-77.657	6
Lamarre et al. (2013)	Quebec, Canada	Matagami 2	49.685	-77.732	10
Lamarre et al. (2013)	Quebec, Canada	Morts	50.264	-63.669	17
Lamarre et al. (2013)	Quebec, Canada	Pylone	53.797	-73.327	3
Lamarre et al. (2013)	Quebec, Canada	Roma	50.298	-63.693	25
Lamarre et al. (2013)	Quebec, Canada	Val d'Or	48.187	-77.595	10
Lamarre et al. (2013)	Quebec, Canada	Verendrye	47.303	-76.855	4
Roe et al. (2017)	Ontario, Canada	Alfred	45.494	-74.805	47
Roe et al. (2017)	Ontario, Canada	Mirabel	45.685	-74.045	40
Roe et al. (2017)	Quebec, Canada	Mer Bleue	45.402	-75.486	58
Clifford (unpublished)	British Columbia, Canada	Burns	49.123	-122.970	12
Clifford (unpublished)	British Columbia, Canada	Eagle Creek	58.284	-134.521	12
Clifford (unpublished)	British Columbia, Canada	Fish Creek	58.336	-134.554	12
Clifford (unpublished)	British Columbia, Canada	Point Bridget	58.647	-134.934	12
Clifford (unpublished)	British Columbia, Canada	Point Lena	58.386	-134.746	12
Clifford (unpublished)	British Columbia, Canada	Surrey	49.204	-122.747	12
Finkelstein/Bunbury (unpublished)	Ontario, Canada	Attawapiskat River 1	52.845	-83.927	16
Finkelstein/Bunbury (unpublished)	Ontario, Canada	Attawapiskat River 2	52.720	-83.940	11
Finkelstein/Bunbury (unpublished)	Ontario, Canada	Attawapiskat River 3	52.712	-84.174	5
Finkelstein/Bunbury (unpublished)	Ontario, Canada	Sutton River 1	55.752	-84.525	2
Finkelstein/Bunbury (unpublished)	Ontario, Canada	Sutton River 2	54.676	-84.599	5
Finkelstein/Bunbury (unpublished)	Ontario, Canada	Sutton River 3	54.610	-84.609	5
Finkelstein/Bunbury (unpublished)	Ontario, Canada	Sutton River 4	54.599	-84.640	3
Swindles (unpublished)	Alaska, USA	Toolik	68.624	-149.580	7
Talbot (unpublished)	Ontario, Canada	Folly	45.272	-75.466	1
Talbot (unpublished)	Quebec, Canada	Mont St. Bruno	45.335	-73.215	2
Talbot (unpublished)	Northwest Territories, Canada	Scotty Creek	61.307	-121.298	21
				TOTAL:	1956

8. *Euglypha strigosa* type and *Euglypha tuberculata* type were consistently identified in addition to *Euglypha ciliata* type, *Euglypha compressa* and *Euglypha cristata*. *Euglypha strigosa* type and *Euglypha tuberculata* type therefore remained as separate taxa, with *Euglypha ciliata* type containing only

*Euglypha ciliata* type, *Euglypha compressa* and *Euglypha cristata*;

9. *Nebela penardiana* type was consistently identified in addition to *Gibbocarina (Nebela) tubulosa* type, so this division remained;

**Table 2**  
Full taxonomy applied in this study.

#	Abbreviation	Full name	Also includes
1	ALA MIL	Alabasta ( <i>Nebela</i> ) <i>militaris</i> type	
2	AMP WRI	Amphitrema wrightianum type	Amphitrema stenostoma
3	ARC ART	Arcella artocrea	
4	ARC CAT	Arcella catinus type	Arcella arenaria type
5	ARC DIS	Arcella discoides type	
6	ARC GIB	Arcella gibbosa type	
7	ARC HEM	Arcella hemispherica type	Arcella rotundata
8	ARC VUL	Arcella vulgaris type	Arcella crenulata
9	ARC FLA	Archerella flavum	
10	ARG DEN	Argynnia dentistoma type	<i>Nebela</i> dentistoma <i>Nebela</i> vitrea type
11	ASS MUS	Assulina muscorum	
12	ASS SEM	Assulina seminulum type	Assulina scandinavica
13	BUL IND	Bullinularia indica	
14	CEN ACU	Centropyxis aculeata type	
15	CEN CAS	Centropyxis cassis type	Centropyxis aerophila type Centropyxis constricta type
16	CEN PLA	Centropyxis platystoma type	
17	CEN ECO	Centropyxis ecornis type	Centropyxis delicatula type Centropyxis laevigata type
18	CON PON	Coniocassis pontigulisiformis	
19	COR TRI	Corythion – Trinema type	Corythion dubium Corythion complanatum Trinema enchelys Trinema lineare Trinema sp.
20	CRY OVI	Cryptodiffugia oviformis type	
21	CRY SAC	Cryptodiffugia sacculus	
22	CYC ARC	Cyclopyxis arcelloides type	Cyclopyxis kahli type
23	CYP AMP	Cyphoderia ampulla type	Cyphoderia calceolus
24	DIF ACU	Diffugia acuminata type	Diffugia bacilliarum type
25	DIF BAC	Diffugia bacillifera type	
26	DIF GLO	Diffugia globulosa type	
27	DIF LEI	Diffugia leidy	
28	DIF LUC	Diffugia lucida type	
29	DIF OBL	Diffugia oblonga type	Diffugia lanceolata
30	DIF OVI	Diffugia oviformis type	Diffugia lithophila type Netzelia ( <i>Diffugia</i> ) tuberculata type
31	DIF PRI	Diffugia pristis type	
32	DIF PUL	Diffugia pulex type	
33	DIF RUB	Diffugia rubescens type	
34	DIF URC	Diffugia urceolata type	
35	EUG CIL	Euglypha ciliata type	Euglypha compressa Euglypha cristata
36	EUG ROT	Euglypha rotunda type	
37	EUG STR	Euglypha strigosa type	
38	EUG TUB	Euglypha tuberculata type	
39	GIB TUB	Gibbocarina ( <i>Nebela</i> ) tubulosa type	
40	HEL ROS	Heleopera rosea	
41	HEL PET	Heleopera petricola	
42	HEL SPH	Heleopera sphagni	
43	HEL SYL	Heleopera sylvatica	
44	HYA ELE	Hyalosphenia elegans	
45	HYA MIN	Hyalosphenia minuta	
46	HYA PAP	Hyalosphenia papilio	
47	HYA SUB	Hyalosphenia subflava	
48	LES EPI	Lesquereusia epistomum	
49	LES MOD	Lesquereusia modesta type	Lesquereusia spiralis type
50	NEB BAR	<i>Nebela</i> barbata	
51	NEB COL	<i>Nebela</i> collaris type	Hyalosphenia ovalis
52	NEB FLA	<i>Nebela</i> flabellulum	
53	NEB MIN	<i>Nebela</i> minor	
54	NEB PEN	<i>Nebela</i> penardiana type	
55	NEB TIN	<i>Nebela</i> tincta type	<i>Nebela</i> bohemica <i>Nebela</i> parvula
56	PAD LAG	Padaungiella ( <i>Nebela</i> ) lageniformis	
57	PAD WAI	Padaungiella ( <i>Nebela</i> ) wailesi	
58	PAR IRR	Paraquadrula irregularis	Paraquadrula sp.
59	PHR ACR	Phryganella acropodia type	
60	PHY GRI	Physochila griseola type	( <i>Nebela</i> griseola type)
61	PLA CAL	Plagiopyxis callida type	
62	PLA SPI	Placocista spinosa type	Placocista lens
63	PLA CAR	Planocarina ( <i>Nebela</i> ) carinata type	Gibbocarina ( <i>Nebela</i> ) galeata type
64	PLA MAR	Planocarina ( <i>Nebela</i> ) marginata type	

Table 2 (continued)

#	Abbreviation	Full name	Also includes
65	PSE FUL	Pseudodiffugia fulva type	
66	PSE FAS	Pseudodiffugia fascicularis type	
67	PYXI	Pyxidicula type	Pyxidicula patens Pyxidicula sp.
68	QUA SYM	Quadrullella symmetrica	
69	SPH LEN	Sphenoderia lenta	
70	TRA DEN	Tracheleuglypha dentata	
71	TRI ARC	Trigonopyxis arcuata type	Trigonopyxis minuta type
72	WAI EBO	Waileiseila eboracensis	

10. *Heleopera petricola* was consistently identified in addition to *Heleopera sphagni*, so this division remained;
11. *Padaungiella (Nebela) walesi* type was consistently identified in addition to *Padaungiella (Nebela) lageniformis*, so this division remained;
12. *Planocarina (Nebela) marginata* type was consistently identified in addition to *Planocarina (Nebela) carinata* type, so this division remained.

Following a recent redefinition, we update the nomenclature of *Nebela militaris* to *Alabasta militaris* (Duckert et al., 2018, in press). The complete dataset was screened for data quality and rare taxa. Eight taxa were removed as they occurred in <1% of the total number of samples (i.e. <19 samples; Table S1). Eleven samples were removed where taxonomic merging or deletion of taxa only identified to genera (e.g. *Diffflugia* sp., *Euglypha* sp. etc.) resulted in a percentage total <90% (Table S2). A further 18 samples with extreme WTDs below the 0.5th (–15 cm) or above the 99.5th (67 cm) percentiles of all WTD measurements were removed to avoid undue influence of these samples in subsequent transfer function development (Table S3). This data management resulted

in a useable dataset of 64 taxa and 1927 samples (Fig. 2). Hereafter, this will be referred to as the full dataset. Of these 1927 samples, all, with the exception of those from Warner and Charman (1994), had a known site location. It was not possible to assign samples to exact sites for the Warner and Charman (1994) data due to unspecific sample codes. Therefore, in all analyses requiring geographical information, reduced datasets were used that excluded those samples.

To investigate testate amoeba ecological and biogeographical patterns across North America and Europe (Amesbury et al., 2016), we compiled the two continental-scale training sets to form a combined dataset. We used the original merged datasets before the removal of rare taxa (n = 1799 for Europe, n = 1956 for North America, total n = 3755), since combining the two may have resulted in additional samples to characterise previously rare taxa. Given the greater degree of taxonomic grouping in the European data, it was necessary to harmonise the North American data into the European taxonomic scheme (Amesbury et al., 2016). Taxonomic changes made to facilitate this followed the reverse of the 12 numbered points above. In addition, three taxa not identified in Europe (*Conicocassis pontigulasiformis*, *Nebela barbata* and

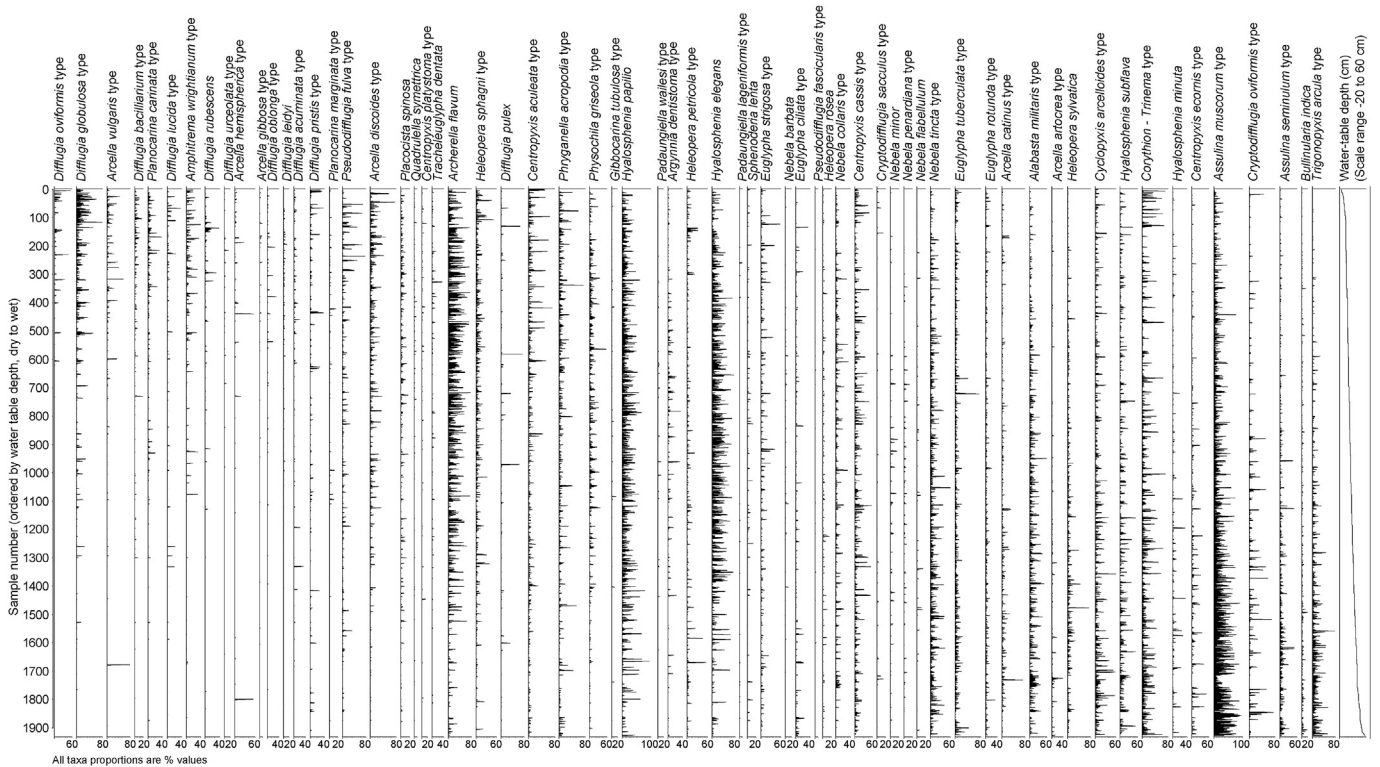


Fig. 2. Percentage distribution of all samples (n = 1927) and taxa (n = 64), ordered vertically by water table depth (wettest samples at the top) and horizontally by water table depth optima from a WA-Tol (inv) model of the full dataset (wettest optima at the left; see also Fig. 5).

*Wailaseila eboracensis*) were added to the European taxonomy, resulting in an initial 63 defined taxa/taxonomic groups. Once combined, we applied the same data quality and rare taxa criteria as above and in Amesbury et al. (2016). We removed 11 rare taxa present in <1% of the total number of samples (<37 samples), 35 samples with extreme WTDs below the 0.5th (–15 cm) or above the 99.5th (82 cm) percentiles of all WTD measurements and a further 45 samples with percentage totals <90% (see Tables S4 – S6 for details of removed samples/taxa). This resulted in a workable combined dataset of 52 taxa and 3675 samples.

All biogeographical inferences resulting from this work should be set against the taxonomic resolution applied. Light microscopic studies necessitate a practical, but relatively low-resolution approach when set against known levels of cryptic and pseudo-cryptic diversity in testate amoebae (e.g. Heger et al., 2013; Oliverio et al., 2014; Kosakyan et al., 2016; Singer et al., 2018). Therefore, where biogeographic patterns are identified at the resolution applied, we can assume that these would still be valid at a higher taxonomic resolution. However, if biogeographic patterns are absent for particular taxa, this does not exclude possible evidence when true genetic diversity is examined.

## 2.2. Statistical analyses

Considering the key aim of this study to produce a transfer function for palaeohydrological reconstruction, non-metric multi-dimensional scaling (NMDS) was used *sensu* Amesbury et al. (2016) to objectively examine the dataset and potentially exclude outlying sites and/or samples that were non-typical for the ombrotrophic peatlands commonly used in palaeoclimate research. NMDS was carried out using the 'metaMDS' function in the R package *vegan* (Oksanen et al., 2015), with water table depth and pH included as potential environmental drivers. Default settings and automatic data transformation were applied and the analysis was conducted based on Bray–Curtis dissimilarity. Environmental variables were passively fitted to the NMDS, and their significance tested, using the 'envfit' function in *vegan*. Sample-specific values for the Shannon–Wiener diversity index (SWDI) were calculated using the 'diversity' function in *vegan*. Transfer function development was carried out using the R package *rioja* (Juggins, 2015). Four common model types were applied; weighted averaging with and without tolerance downweighting (WA/WA-Tol; both with potential for inverse (inv) or classical (cla) deshrinking), weighted averaging with partial least squares (WAPLS), maximum likelihood (ML) and the modern analogue technique (MAT; with the potential for a weighted-mean version, WMAT). For each model, only the best performing version (judged by  $r^2$  and leave-one-out root mean square error of prediction; RMSEP<sub>LOO</sub>) was selected for further analysis. Additional

statistical testing followed convention in the recent literature after Amesbury et al. (2013) and included calculation of leave-one-site-out RMSEP (Payne et al., 2012; RMSEP<sub>LOSO</sub>), segment-wise RMSEP (Telford and Birks, 2011a; RMSEP<sub>SW</sub>) and a spatial autocorrelation test (Telford and Birks, 2005, 2009) using the 'rne' (random, neighbour, environment) function in the R package *palaeoSig* (Telford, 2015). Also, following convention, transfer function development followed a two-step process. We firstly developed models using the full dataset and then, for each model type, performed a second, 'pruned', model run which excluded samples with high residual values greater than 20% of the total range of measured water table depths.

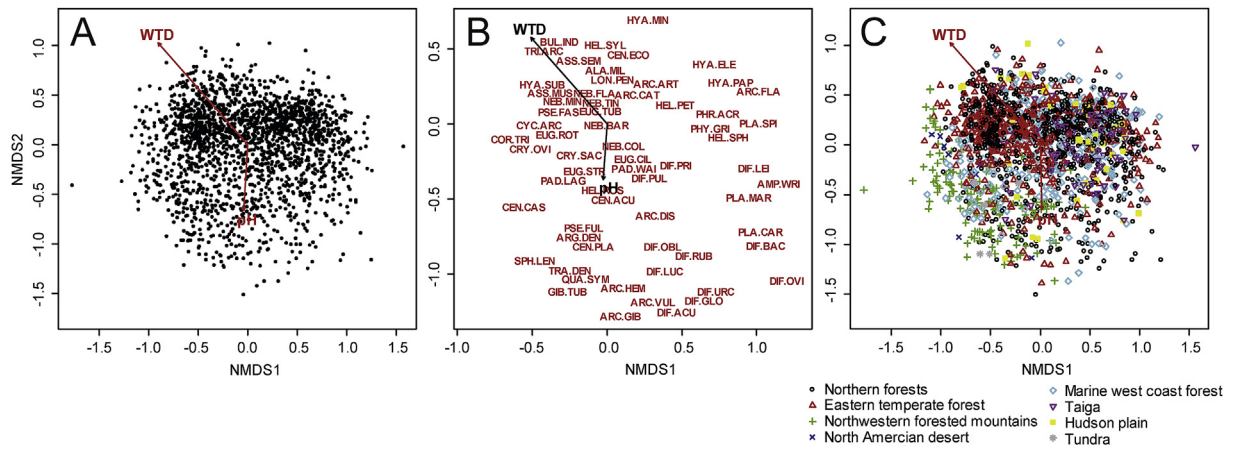
As part of the testing process, models were applied to independent (i.e. no modern samples from the sites were included in the transfer function) palaeo-data from two *Sphagnum*-dominated ombrotrophic peatlands: Framboise bog, Nova Scotia (45.7208°N, 60.5521°W; H. Mackay, unpublished) and Lac Le Caron peatland, Québec (52.2884°N, 75.8393°W; van Bellen et al., 2011). Original taxonomies of the independent palaeo datasets were merged and updated (i.e. in terms of nomenclature) as necessary in order to match the taxonomic scheme of the new models produced here. Sample-specific errors for all transfer function reconstructions were based on 1000 bootstrapping cycles. We compared our reconstructions with output from the most geographically extensive published transfer function in North America (Booth, 2008) and tested the significance of all new reconstructions (Telford and Birks, 2011b) using the 'randomTF' function in the R package *palaeoSig* (Telford, 2015; Payne et al., 2016).

To test for regional variability within the continental dataset, we developed regional models based on United States Environmental Protection Agency (EPA) Level 1 eco-region sub-divisions ([www.epa.gov/eco-research/ecoregions](http://www.epa.gov/eco-research/ecoregions)), using the pruned WA-Tol (inv) model (excluding samples from Warner and Charman, 1994; see Section 2.1) as the basis for regional model development (n = 1696). Our data covered eight different eco-regions but to ensure regional models were representative, we only developed models for those regions containing >50 samples (Table 3). This resulted in five regional models: taiga (samples n = 68, sites n = 7), northern forests (samples n = 978, sites n = 56), northwestern forested mountains (samples n = 136, sites n = 16), marine west coast forest (samples n = 266, sites n = 23) and eastern temperate forests (samples n = 377, sites n = 18). Models were not developed for the tundra (samples n = 7, sites n = 1), Hudson Plain (samples n = 32, sites n = 7) and North American deserts (samples n = 11, sites n = 1) eco-regions. The independent palaeo records were located in the northern forest (Framboise) and taiga (Lac Le Caron) eco-regions. The programme PAST (v3.20; Hammer et al., 2001) was used to run one-way PERMANOVA tests (9999 iterations,

**Table 3**  
Numbers of sites, samples and taxa in different EPA eco-regions, along with information on water table depth (WTD) values for all samples within each region and basic performance statistics for eco-region transfer functions derived from the pruned WA-Tol (inv) model dataset (n = 1696). Comparable data for all samples is shown in top row for reference. SD = standard deviation. SWDI = Shannon Wiener diversity index. Dashed lines indicate where no performance statistics are available as models were not run for all eco-regions due to low sample sizes.

Ecoregion	Number of samples	Number of sites	Number of taxa	Mean WTD ±1 SD (cm)	WTD range (min – max) (cm)	SWDI ± 1 SD	RMSEP <sub>LOO</sub> R <sup>2</sup>	Maximum bias	Average bias	
<i>ALL SAMPLES</i>	1696	126	64	18.3 ± 14.1	72 (–15–57)	1.95 ± 0.44	7.42	0.72	13.87	0.02
Tundra	7	1	25	11.7 ± 10	29 (1–30)	1.96 ± 0.24	–	–	–	–
Taiga	64	6	56	12 ± 10.1	49 (–3–46)	2.01 ± 0.49	8.06	0.36	32.52	0.71
Hudson plain	32	7	44	15 ± 14.2	47 (–4–43)	1.90 ± 0.43	–	–	–	–
Northern forests	915	55	62	18.2 ± 14.2	71 (–15–56)	2.01 ± 0.41	6.90	0.76	15.53	0.46
Northwestern forested mountains	130	16	42	18.4 ± 15.2	55 (–5–50)	1.70 ± 0.55	6.87	0.80	13.89	0.29
Marine west coast forest	191	22	59	18.1 ± 13.7	69 (–15–54)	1.91 ± 0.36	8.30	0.63	18.37	0.19
Eastern temperate forests	346	18	62	20 ± 13.8	65 (–8–57)	1.94 ± 0.46	7.12	0.73	15.96	0.05
North American deserts	11	1	18	29.5 ± 17	50 (0–50)	1.47 ± 0.62	–	–	–	–





**Fig. 3.** NMDS biplots for A) the full dataset (n = 1927) showing sample positions, B) the full dataset showing taxa positions, C) a reduced dataset excluding samples from Warner and Charman (1994) (n = 1884) showing sample positions, colour-coded by EPA eco-region (see text for details). Vectors on all plots show correlation with environmental drivers. Some taxa positions in B have been marginally altered to improve legibility, but relative positions remain intact. Full names for taxa abbreviations can be found in Table 2. For references to colour, readers are referred to the online version of the article. (For interpretation of the references to colour in this figure legend, the reader is referred to the Web version of this article.)

assessed by Bray-Curtis dissimilarity) of the differences between samples from different eco-regions.

To test the validity of a combined North American and European transfer function, we applied the North American (this study), European (Amesbury et al., 2016) and a pruned combined model (n = 3425; all WA-Tol (inv)) to independent palaeo data from both North America (Framboise) and Europe (Tor Royal Bog, UK sensu Amesbury et al., 2016). We also qualitatively compared the modelled taxa water table depth optima and relative optima ranking of the three models.

### 3. Results

#### 3.1. Ordination

Summary NMDS results are shown in Fig. 3. For the NMDS of the full dataset (Fig. 3A and B), square root transformation was automatically applied. WTD was significantly correlated to NMDS axis 1 ( $p < 0.001$ ), although the WTD vector was at  $45^\circ$  to the horizontal, with taxa favouring drier conditions in the top left of the ordination space and taxa favouring wetter conditions in the bottom right (Fig. 3B). In general, all samples fell in a large, fairly coherent single swarm of data, with no significant outliers, or groups of outliers, though samples tended to cluster more in the uppermost part of

the swarm (Fig. 3A). When sub-divided by eco-region (Fig. 3C), there was a high degree of overlap, with no regions outlying all others. Only samples from the northwestern forested mountain eco-region tended to cluster in a specific part of the sample swarm (towards the left; Fig. 3C), whereas samples from all other regions were located throughout the ordination space. This high degree of overlap, coupled with the significant correlation of WTD to NMDS axis 1 provided a strong justification to continue with transfer function development using the full dataset.

#### 3.2. Transfer function development

Performance statistics for the best-performing version of each model type are shown in Table 4. For the full dataset, the range of WTD values was 82 cm (minimum WTD -15 cm; maximum WTD 67 cm), therefore a value of 16.4 cm (20% of range) was used to remove outlier samples during data pruning. The number of pruned samples varied for each individual model type (Table 4). Following data pruning, the WMAT K5 (weighted-mean modern analogue technique with five nearest neighbours) model was the best performing when judged by  $RMSEP_{LOO}$  and  $R^2$ . ML was the worst performing model (based on  $RMSEP_{LOO}$ ) when all samples were included but improved after data pruning (e.g. second best pruned model for  $r^2$  only), largely down to the removal of 410

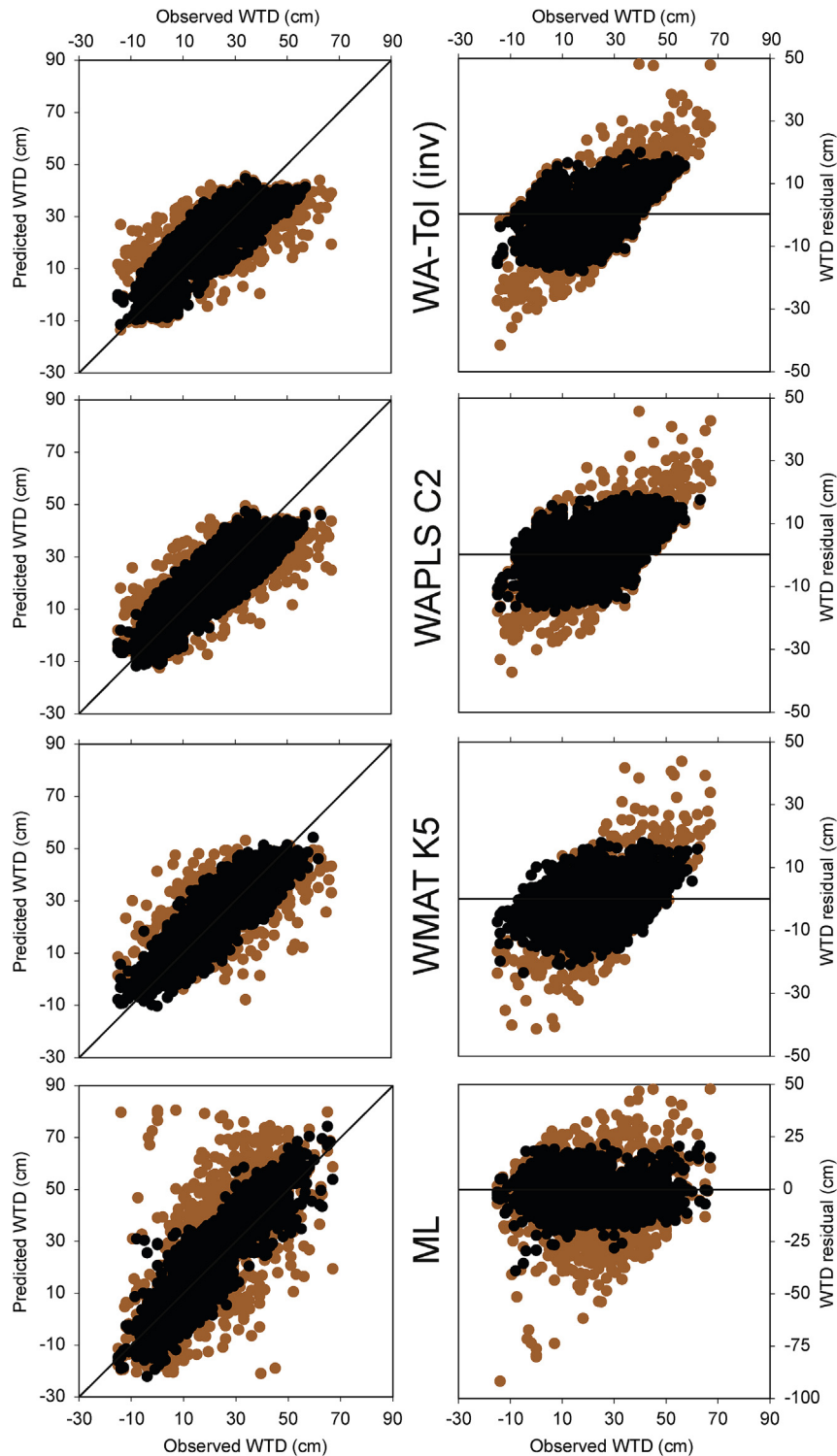
**Table 4**

Performance statistics for all transfer function models for water-table depth based on leave-one-out ( $RMSEP_{LOO}$ ), leave-one-site-out ( $RMSEP_{LOSO}$ ) and segment-wise ( $RMSEP_{SW}$ ) cross validation methods. Results are in order of performance as assessed by  $RMSEP_{LOO}$  of the pruned model run. Results for  $RMSEP_{LOO}$  are given for both pre- and post-removal of samples with high residual values (see text for details; figures in parentheses show performance statistics after the removal of outlier samples). Results for  $RMSEP_{LOSO}$  and  $RMSEP_{SW}$  are only given for pruned models. Relative decreases in model performance are between  $RMSEP_{LOO}$  of the pruned models to  $RMSEP_{LOSO}$  and  $RMSEP_{SW}$ . SD is the standard deviation of all water-table measurements included in each model after the removal of outliers. Results are only shown for the best performing version of each model type. WA-Tol (inv) = weighted averaging with tolerance downweighting and inverse deshrinking; WAPLS C2 = second component of weighted averaging partial least squares; ML = maximum likelihood; WMAT K5 = weighted averaging modern analogue technique with five nearest neighbours.

Model type	$RMSEP_{LOO}$	$R^2$ (LOO)	Maximum bias (LOO)	Average bias (LOO)	$RMSEP_{LOSO}$	Relative decrease LOO - LOSO	$RMSEP_{SW}$	Relative decrease LOO - SW	Number of outlier samples removed	n for post-outlier removal model	SD
WMAT K5	9.38 (6.83)	0.64 (0.79)	22.97 (10.84)	-0.79 (-0.73)	8.21	0.201	7.07	0.034	161	1767	14.85
WA-Tol (inv)	10.20 (7.42)	0.57 (0.72)	28.48 (13.87)	0.03 (0.02)	7.70	0.037	8.06	0.086	197	1730	14.10
WAPLS C2	10.10 (7.53)	0.58 (0.71)	27.38 (14.38)	0.02 (0.02)	7.85	0.042	8.18	0.086	190	1737	14.11
ML	14.76 (8.60)	0.53 (0.77)	10.31 (6.95)	-3.00 (-1.18)	8.67	0.008	8.75	0.017	410	1517	15.72

samples with high residual values, more than double the number of pruned samples than for the next highest model (WA-Tol (inv);  $n = 197$ ). Pruned samples for all models tended to be reasonably evenly distributed between wet and dry extremes, however ML produced far more extreme negative residuals (i.e. samples where

WTD was substantially overestimated; Fig. 4). Partly as a result, both ML and WMAT K5 suffered from comparatively high average bias values when compared to the two WA-based models, although the WA-based models had higher maximum bias (Table 4). WAPLS C2 and WA-Tol (inv) performed very similarly on all metrics, with



**Fig. 4.** Biplots of leave-one-out cross-validated observed versus predicted water table depth (left) and residual error plots (right) for the four model types under investigation. See text for model abbreviations. Orange points are model runs with all data, black points are model runs after the removal of samples with high residual values. For references to colour, readers are referred to the online version of the article. (For interpretation of the references to colour in this figure legend, the reader is referred to the Web version of this article.)

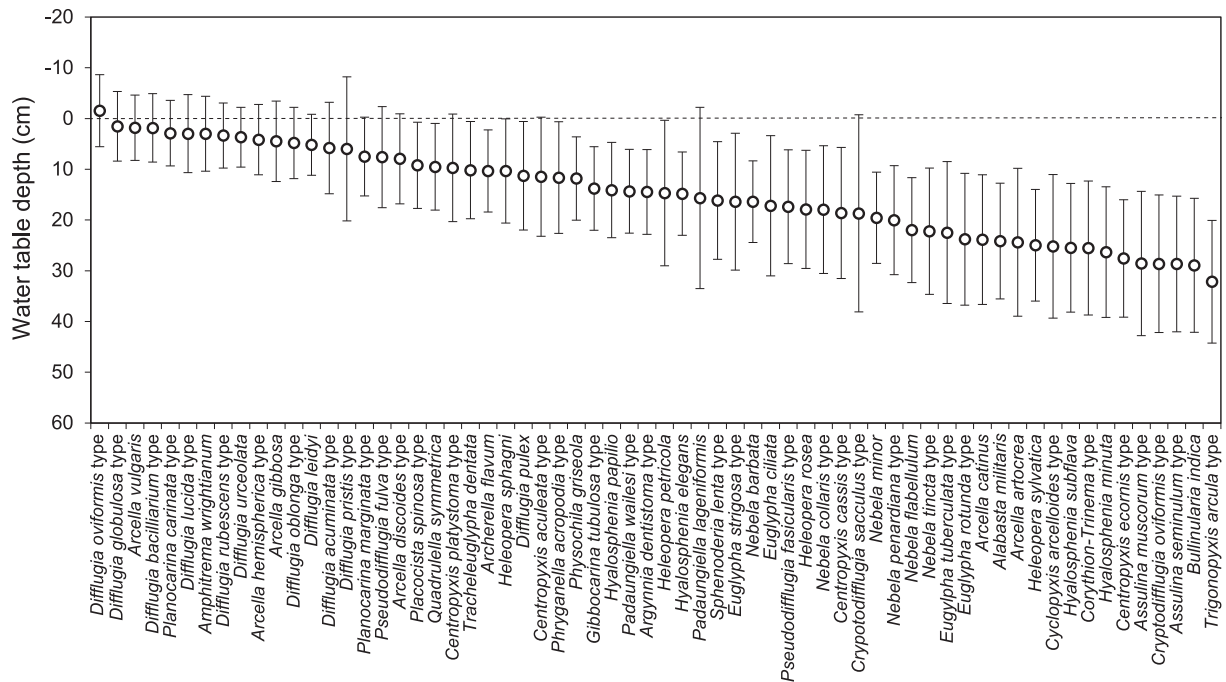


Fig. 5. Water table depth optima and tolerances (cm) for 64 taxa based on the WA-Tol (inv) model after the removal of outlying samples ( $n = 1730$ ).

WA-Tol (inv) marginally outperforming WAPLS C2 after data pruning.

All models showed a decrease in relative performance for  $RMSEP_{LOSO}$  and  $RMSEP_{SW}$  compared to  $RMSEP_{LOO}$ , though for ML, both reductions were marginal (Table 4). Relative performance ratings also changed when different versions of RMSEP were applied. For example, when using  $RMSEP_{LOSO}$ , WA-based models were the best performing, but using  $RMSEP_{SW}$ , both showed a higher relative decrease in performance than WMAT K5 and ML (though  $RMSEP_{SW}$  for the WA-based models was still lower than for ML; Figure S1). Both WA-based models performed worse in ‘dry’ segments (i.e. WTDs greater than 40 cm) with comparatively less samples, whereas WMAT K5 and ML displayed more consistent RMSEP values across all segments, suggesting that these models were not as affected by WTD and/or segment sampling frequency (Figure S1). WMAT K5 performed relatively poorly for  $RMSEP_{LOSO}$ , suggesting that this model type does not deal well with clustered training sets (Amesbury et al., 2016).

All models displayed evidence of spatial autocorrelation, given that  $r^2$  declined much more rapidly when geographically close compared to random samples were removed; this decline was sharpest for WMAT K5 (Figure S2).  $R^2$  values for WMAT K5 and ML declined steadily with the continued removal of geographically close samples, whereas, interestingly,  $r^2$  increased from previous values for both WA-based models when all samples within 1000 km of each other were removed, such that the 1000 km values were higher than for 100 km. Even values at 2500 km (i.e. the models would only contain samples that are >2500 km apart) were comparable to 100 km. These results suggest that, despite the initial decline in  $r^2$ , the WA-based models are more robust to spatial autocorrelation than WMAT K5 or ML.

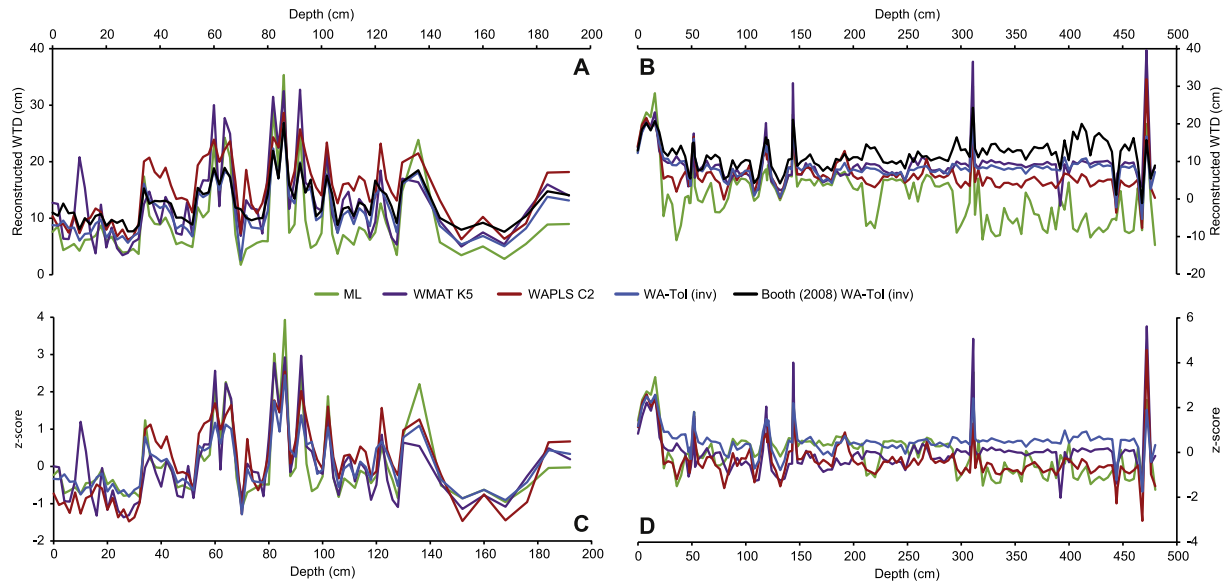
Taxon-specific values for WTD optima and tolerance showed taxa ordered along a WTD gradient both comparable to the diagonal WTD vector along axis 1 of the NMDS (Fig. 3) and also to other studies. In contrast to a European compilation (Amesbury et al., 2016), where taxonomic grouping resulted in more similar tolerance ranges along the WTD gradient, tolerances in this dataset

(Fig. 5) showed a more typical pattern of being wider for drier taxa and vice versa (Mariusz Lamentowicz and Mitchell, 2005). For example, the mean tolerance for the driest half of taxa, ranked by optima, was 12.5 cm, whereas the same value for the wettest half was 8.4 cm (significantly different at  $p < 0.05$  for a two-sample, two-tailed  $t$ -test,  $df = 60$ ).

### 3.3. Testing model application

All four models were applied to independent palaeo records from Framboise and Lac Le Caron peatlands (Fig. 1) and compared to reconstructions using the transfer function of Booth (2008), the most geographically extensive published transfer function from North America (Fig. 6; Figure S3). All model types, as well as the Booth (2008) reconstructions, showed broadly similar patterns of change (Fig. 6 and S3). WMAT K5 and ML reconstructions tended to reconstruct somewhat more abrupt (i.e. change over less samples) and extreme (i.e. higher and lower water table depth values at either end of the scale) change, when compared to the WA-based models, a trend particularly evident in the Lac Le Caron reconstructions. In general, all four model types tended to co-vary within a range of 5–10 cm, however there were periods when particular reconstructions were more divergent. For example, at 10 cm depth at Framboise, the WMAT K5 model reconstructed a significant dry shift not seen in other models (Fig. 6A) and at Lac Le Caron, the ML model produced wet shifts at 36 cm and around 215 cm that were not replicated by other models, as well as reconstructing generally wetter conditions for the lower ~150 cm of the profile (Fig. 6B). However, when viewed as z-scores (Fig. 6C and D; Swindles et al., 2015a), the majority of shifts were aligned, suggesting that all models are reliably reconstructing the main patterns of palaeohydrological change in the profiles.

The significance of all reconstructions was tested against models trained on random data (Telford and Birks, 2011b, Table 5). Reconstructions at Framboise for all model types were either significant (i.e.  $< 0.05$ ) or very close to significant (0.057 for ML). However, equivalent  $p$  values at Lac Le Caron were consistently insignificant,



**Fig. 6.** Comparison of transfer function reconstructions from four model types. A and B are raw water table values (cm). C and D are z-scores. A and B include comparison to reconstruction from Booth (2008). A and C for Framboise bog, B and D for Lac Le Caron peatland. For all plots, higher y-axis water table depth or z-score values indicate drier conditions. Note varying y-axis scales.

often to extremes. For example, ML had the lowest  $p$  value at 0.287 (despite having the highest value at Framboise), with both WA-based models having  $p$  values  $> 0.98$ , meaning their reconstructive ability was worse than almost all models trained on randomly generated data (see also Payne et al., 2016).

### 3.4. Eco-region variability and models

One-way PERMANOVA tests showed that there were significant differences in testate amoeba assemblages between factor eco-regions ( $p < 0.0001$ ,  $F = 15.16$ ). Species richness (i.e. number of taxa present) differed among eco-regions whereas eco-region mean species diversity values were typically more consistent (in the range 1.9–2, overall range for all samples 0.19–3.07), with the exception of the northwestern forested mountains and North American deserts regions (Table 3). Those eco-regions characterised by only a single site (tundra, North American deserts) had expectedly lower species richness, but, in the case of the tundra region, still displayed species diversity equivalent to the total dataset and to other regions (e.g. Swindles et al., 2009, 2014), despite being based on only seven samples. There were notable differences in species richness among regions with more comparable numbers of sites and samples. For example, eastern temperate forests (18 sites, 346 samples) contained 62 different taxa, whereas northwestern forested mountains (16 sites, 131 samples) contained only 42 taxa. In this case, the 20 fewer taxa in the northwestern forested mountains were often relatively rare taxa that were absent from multiple regions, however also included the absence of other relatively abundant taxa present in all other regions (e.g. *Amphitrema wrightianum*, *Bullinularia indica*, *Diffflugia oblonga*, *Diffflugia pulex*). Inter-regional assemblage differences were investigated by plotting taxa distributions across the eight eco-regions (Figure S5). Only eight of 64 taxa occurred in all eight eco-regions: *Assulina muscorum*, *Nebela tinctoria* type, *Euglypha tuberculata*, *Hyalosphenia papilio*, *Corythion-Trinema* type, *Centropyxis cassis* type, *Euglypha rotunda* type and *Diffflugia globulosa* type. However, allowing for the reduced species richness in the less-sampled tundra and North American desert eco-regions (Table 3; regions 1 and 8 on Figure S5), 42 of 64 taxa occurred in six or more eco-regions. Of the 22 taxa

that were present in five or less eco-regions, 14 were absent from the less-sampled tundra and North American desert regions, as well as the relatively taxa-poor northwestern forested mountains region. Of those 14 taxa, the most frequent were *Physochila griseola* (619 (out of 1884) occurrences), *Bullinularia indica* (519 occurrences) and *Centropyxis ecornis* type (376 occurrences). Taxa present in only two or three eco-regions were largely driven by low occurrence, with only *Nebela minor* of that group occurring in  $> 100$  samples (Figure S5).

Taxa tended to occur on a continuum where their presence in samples and eco-regions, and local abundance, were broadly aligned (Figure S6). For example, common, locally abundant key hydrological indicator taxa such as *Assulina muscorum*, *Trigonopyxis arcuata* type and *Archerella flavum* tended to occur in multiple (i.e. 6–8) eco-regions, whereas rare (in both occurrence and abundance) taxa such as *Pseudodiffflugia fascicularis* type and *Padaungiella lageniformis* type tended to have more restricted ranges, occurring in only a few (i.e. 2–3) eco-regions. However, this overall trend also encompassed considerable variability. Relatively rare taxa could still be locally abundant and occur across multiple eco-regions. For example, *Arcella hemispherica* occurred in only 3% of samples, but had a maximum abundance of 63% and was present in six eco-regions. Taxa that were rare in both occurrence and abundance could still occur across multiple eco-regions. For example, *Quadrullella symmetrica* was present in only 3.6% of samples, never above 9% abundance, but was only absent from one eco-region (North American desert). The absence of *Q. symmetrica* from the North American desert eco-region is noteworthy given the recent discovery of a *Quadrullella* taxon in a Mexican desert (Pérez-Juárez et al., 2017). Finally, locally abundant taxa could also have more restricted ranges. For example, *Diffflugia oviformis* type occurred in only two eco-regions (NF and ETF), but formed more than half of the assemblage in some samples in those regions.

To further test overall model performance and to further investigate internal biogeographical variability, we developed models for five eco-regions, using only the WA-Tol (inv) model type (cf. Amesbury et al., 2016; see Section 2.2). Eco-region model reconstructions varied notably (Fig. 7 and S4), in terms of value, pattern and, less often, direction of change. Most notably, the

**Table 5**

PalaeoSig *p* values for the significance of reconstructions against models based on randomly generated data for the pruned versions of four model types and five eco-region models, against two independent test sets. See Tables 3 and 4 for further statistics on all models.

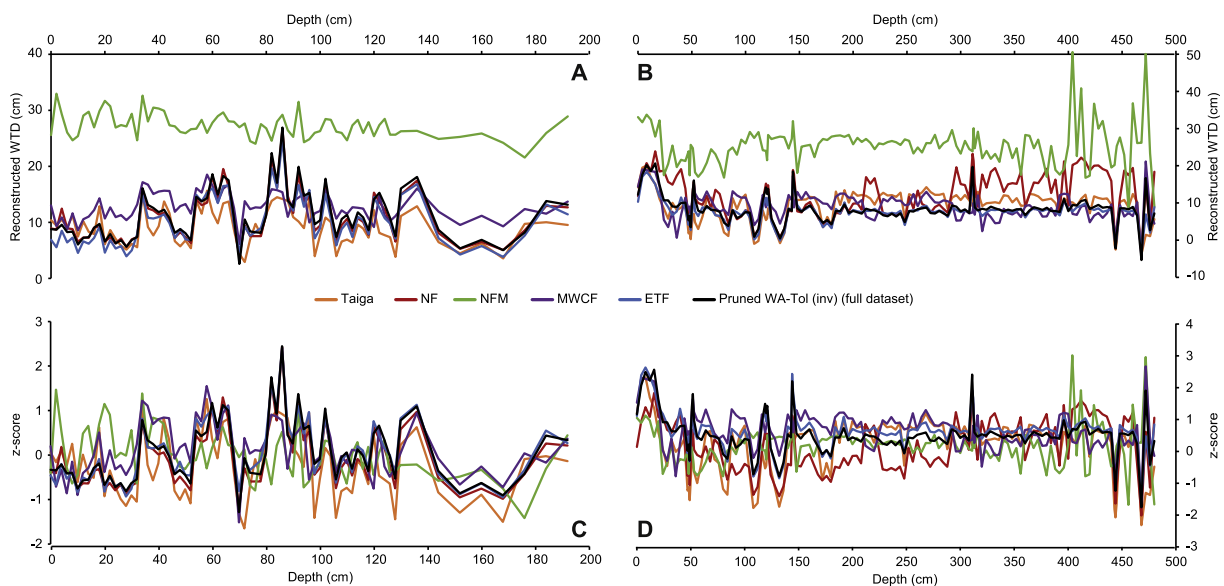
Model	Framboise	Lac Le Caron
WA-Tol (inv)	0.013	0.987
WAPLS C2	0.015	0.984
WMAT K5	0.002	0.709
ML	0.057	0.287
Taiga	0.485	0.943
Northern forests	0.015	0.729
Northwestern forested mountains	0.782	0.997
Marine west coast forest	0.471	0.871
Eastern temperate forests	0.007	0.940

northwestern forested mountains (NFM) model produced reconstructions, for both palaeo datasets, that had notably drier reconstructed water table depth values when compared to all other models (including the pruned WA-Tol (inv) model based on the full dataset; Fig. 7A and B). Mean WTD for individual samples and the overall range of WTDs sampled for the NFM model were equivalent to other models (Table 3), suggesting these differences were not simply driven by poor characterisation of ‘wet’ conditions in the model. Even when viewed as z-scores, the NFM model appeared anomalous, with often conflicting patterns and direction of change, despite having lower RMSEP<sub>100</sub> and higher R<sup>2</sup> values than all other regional models (Table 3). The eastern temperate forest (ETF) model most closely resembled the WA-Tol (inv) reconstruction at both sites; this model had the highest number of samples and joint highest number of taxa of the eco-region models (Table 3). Despite having a much lower R<sup>2</sup>, and higher maximum and average bias values (Table 3), the taiga reconstructions were broadly in line with the WA-Tol (inv) reconstruction at both sites. The northern forest (NF) model reconstructions, despite being based on a high number of species and taxa compared to most other eco-region models (Table 3), were variable in the extent to which they aligned with other models. At Framboise, a site within the NF eco-region, the NF reconstruction was closely aligned to the ETF and WA-Tol (inv)

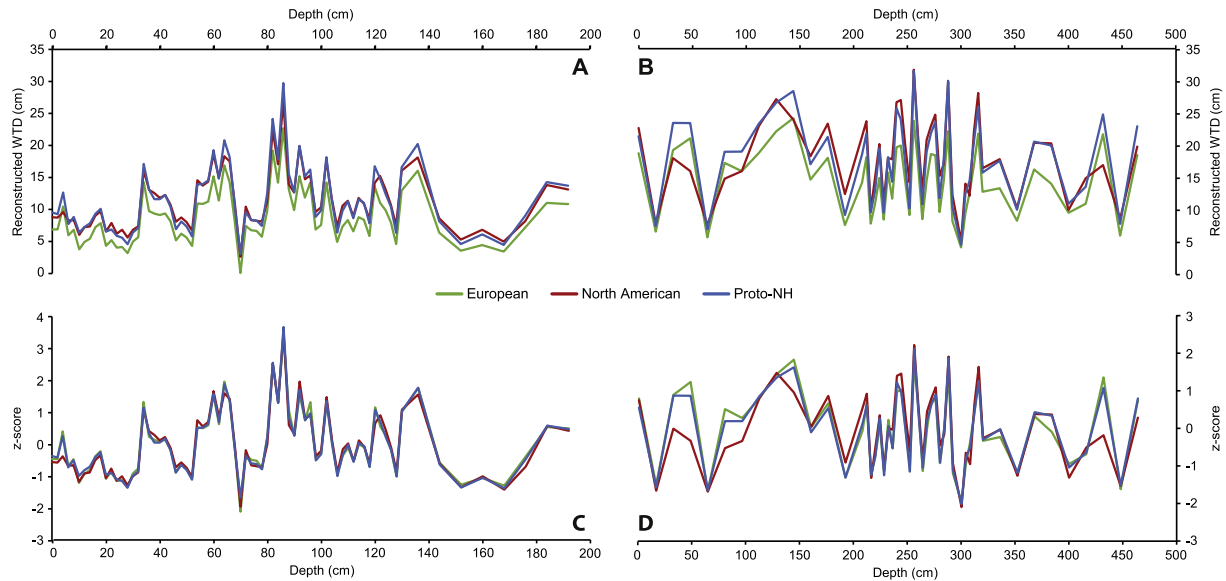
reconstructions, whereas at Lac Le Caron, it often exhibited differing patterns and direction of change, suggesting potential problems with supra-regional application of eco-region models (Turner et al., 2013). All eco-region model reconstructions at both sites were tested for significance against models trained on random data (Telford and Birks, 2011b, Table 5). *P* values for only two of ten reconstructions fell under the suggested significance cut-off value of 0.05 (NF and ETF models at Framboise, 0.015 and 0.007 respectively). Other *p* values ranged from 0.471 to 0.997 and no reconstructions at Lac Le Caron were significant. Taxa optima for the five eco-region models were compared to those of the full dataset (Figure S7). Taxa optima rank, cf. Fig. 8, was not compared due to variable *n* for taxa in each eco-region model. Optima for individual taxa varied from 0.8 cm (*A. wrightianum*) to 42.5 cm (*Diffflugia rubescens*), with a mean value of 11.6 cm and standard deviation of 7.3 cm.

### 3.5. Combined North American and European compilation

Model development began with a dataset of 52 taxa and 3675 samples. Data pruning removed 250 samples with residual values > 20% of the range of measured water table depths (19.4 cm). The pruned, combined WA-Tol (inv) model (*n* = 3425) had an RMSEP<sub>100</sub> of 7.94 cm and R<sup>2</sup> of 0.65, similar to continental North American (RMSEP 7.42 cm, R<sup>2</sup> 0.72; Table 4) and European (RMSEP 7.72 cm, R<sup>2</sup> 0.59; Amesbury et al., 2016) models, despite an almost doubling of sample numbers. Reconstructions using North American, European (Amesbury et al., 2016) and combined models for independent palaeo records in both Europe and North America were very similar when viewed as both reconstructed water table depth values and z-scores (Fig. 8). Individual taxa water table depth optima, whether in cm or rank order, were not significantly different across the three models (comparing the European and North American data as the only completely independent variables; for optima  $r = 0.80$ ,  $p < 0.05$ , for rank  $r_s = 0.82$ ,  $p < 0.05$ ), confirming WTD as an ecologically important environmental variable (cf. Juggins, 2013). Despite the general consistency in WTD optima, some variability was evident. Most notably,



**Fig. 7.** Comparison of transfer function reconstructions from five eco-region models. All panels include comparison to pruned continental WA-Tol (inv) model. A and B are raw water table values (cm). C and D are z-scores. A and C for Framboise bog, B and D for Lac Le Caron peatland. Model abbreviations in key: NF = northern forests; NFM = northwestern forested mountains; MWCF = marine west coast forest; ETF = eastern temperate forests. For all plots, higher y-axis water table depth or z-score values indicate drier conditions. Note varying y-axis scales.



**Fig. 8.** Comparison of transfer function reconstructions from European, North American and combined models. All models are pruned WA-Tol (inv). A and B are raw water table values (cm). C and D are z-scores. A and C for Framboise, B and D for Tor Royal Bog. For all plots, higher y-axis water table depth or z-score values indicate drier conditions. Note varying y-axis scales.

*Diffugia labiosa* type was the wettest ranked taxa in the North American and combined models, with negative values indicative of standing water, but ranked 45 of 46 taxa in the European model (Amesbury et al., 2016) with a dry water table depth optima of ~25 cm. However, in the European dataset, *D. labiosa* was only found in one sample in one eco-region (Scandinavia) at very low abundance (0.7%; Amesbury et al., 2016) and was therefore poorly characterised. Its more extensive presence in the North American dataset (as *D. oviformis* type) in 60 samples spanning two eco-regions (northern forests and eastern temperate forests) with a maximum abundance of >50% provides better quality ecological data for this taxon and highlights the value of large, ecologically diverse datasets in improving modern analogue quality, as well as the persistent issue of taxonomic consistency (Payne et al., 2011). Other differences in optima and rank were less extreme, but varied by up to 15 ranking positions or approximately 10 cm in terms of water table optima (e.g. *Nebela penardiana* type, *Assulina seminulum* type). On average, taxa optima varied by 4.3 cm and 5.2 ranking positions across all three models (equivalent values of 3.8 cm and 4.4 ranking positions excluding the anomalous *D. labiosa* type).

## 4. Discussion

### 4.1. A new continental-scale transfer function for North America

Performance statistics (i.e.  $r^2$  and  $RMSEP_{LOO}$ ) for the North American model were equivalent to a recent European compilation (Amesbury et al., 2016) and a range of other regional-scale models within North America and Europe (Table S7, i.e. within mean  $\pm 1\sigma$  of 20 reviewed models). Further statistical tests (*sensu*. Amesbury et al., 2013) showed that potential issues such as clustered sampling design and spatial autocorrelation had only minimal effect on model performance and output. Reconstructions on independent palaeo-data were comparable to a less sample-dense and more geographically restricted North American model (Booth, 2008). Taken together, these multiple strands of evidence suggest that our new model can be used as an effective tool to reconstruct peatland palaeohydrology throughout the North American continent. More ecologically bespoke

regional models may still provide reliable reconstructions within and potentially even outside of their geographical limits (Turner et al., 2013; Willis et al., 2015) and have an important role to play in ongoing research where they suit specific research questions. However, the volume of data in the continental-scale compiled dataset provides improved modern analogues for many taxa. All four models tested performed similarly in statistical terms, however due to potential issues with spatial autocorrelation and the somewhat abrupt nature of some reconstructed shifts in WTD with WMAT K5 and ML (Fig. 6), as well as the differing magnitude of ML reconstructions (Fig. 6A and B), we favour WA-based models. A pruned WA-Tol (inv) model marginally outperformed WAPLS C2 and produced reconstructions slightly more aligned to the model of Booth (2008), so WA-Tol (inv) is our preferred model choice.

The variability of  $p$  values for significance testing of transfer function reconstructions (Telford and Birks, 2011b) between sites and models trained on the same data brings the use of the 'randomTF' test into further question (Amesbury et al., 2016; Payne et al., 2016). Across all model types and eco-regions, no reconstructions from Lac Le Caron had  $p$  values < 0.05. Eco-region model reconstructions for Framboise varied widely between 0.007 and 0.782. At Framboise, NF and ETF model reconstructions were both significant (0.015 and 0.007 respectively), whereas MWCF and taiga model reconstructions were non-significant (0.471 and 0.485 respectively), despite showing extremely similar patterns of change (Fig. 7; Table 5). Given that the efficacy of the 'randomTF' method has been recently reviewed and questioned (Amesbury et al., 2016; Payne et al., 2016), these results further call into question the usefulness of this test.

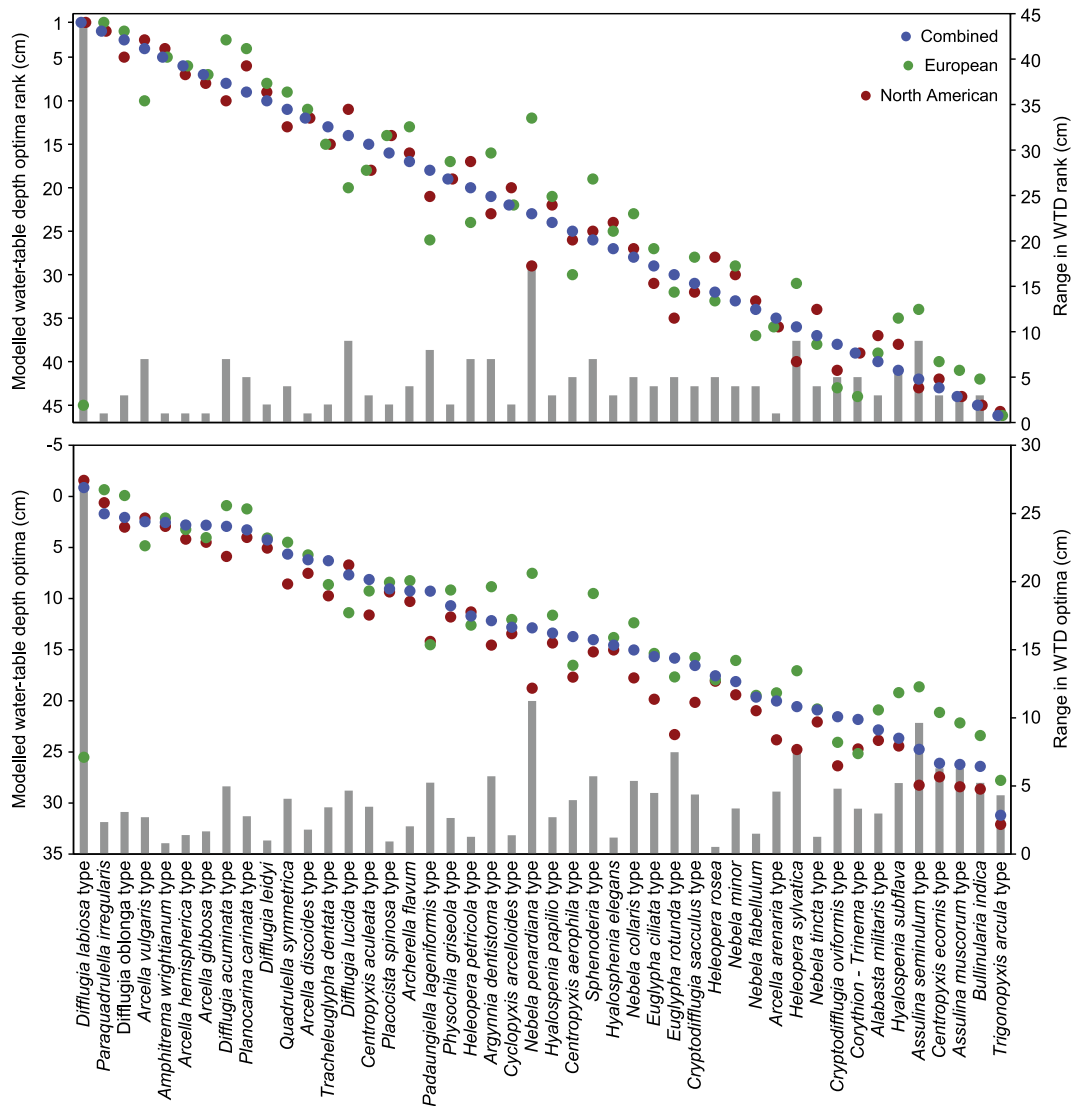
To make transfer functions more openly accessible to the research community and to facilitate users' own application of the model to fossil data, we provide the full compiled North American dataset along with R code to apply the WA-Tol (inv) model as supplementary information to this manuscript (our dataset is archived on Mendeley data and is searchable at <https://data.mendeley.com/datasets>). In addition, site-based datasets preserving the original taxonomy of the individual studies are available through the Neotoma Paleocological Database ([www.neotomadb.org](http://www.neotomadb.org)).

4.2. North-American regional variability

Biogeographical patterns that are evident in the dataset appear to be largely driven either by sampling frequency or restricted to particular eco-regions (e.g. NFM). Outside of these limitations, biogeographical differences occurred against a background of relative cosmopolitanism across the dataset. For example, the finding that *H. papilio* occurred across all eco-regions is particularly interesting given recent evidence suggesting that it displays geographical patterns of both genotypic and phenotypic diversity in other regions (Heger et al., 2013; Amesbury et al., 2016). This observation is reassuring for the broader applicability of transfer functions across large geographical areas. Although we used only a moderate taxonomic resolution (higher than for a European compilation; Amesbury et al., 2016) that did not allow us to identify the full complexity of biogeographic patterns, and hence may have caused us to miss some discrepancies in taxa hydrological optima, this potential loss of information did not result in poor model performance. Even though a higher taxonomic resolution may permit the development of more precise transfer function models it

appears that the taxonomic scheme currently used by ecologists and palaeoecologists is robust and the resulting model performance satisfactory.

Taxa optima were broadly consistent across eco-region models (Figure S7), with mean variability between eco-region models of 11.6 cm. Highly variable water table depth optima for individual taxa tended to be driven by poor characterisation. For example, *Diffflugia rubescens* and *Arcella gibbosa* both had tightly clustered optima across a majority of models, with outlying values for the MCWF model only driving the two highest values for overall optima range; in that model, the optima for both taxa were driven by occurrence in a single sample (from 191 samples in the model; Table 3), both at <2%. Likewise, the outlying optima for *Padaungiella lageniformis* in the NF model was driven by only 6 occurrences (from 915 samples in the model; Table 3), never at >1% abundance. Thus, whilst the variability evident between taxa optima across eco-regions may be partly driven by genuine biogeographical differences, the overall consistency provides support for continental-scale compilation. The variability in eco-region model reconstructions illustrates a potential advantage of sample dense



**Fig. 9.** Comparison of water table depth optima (cm) for 46 taxa from European, North American and combined models, ordered by the combined model. Top panel: rank order of taxa (coloured spots) with range between highest and lowest rank (grey bars). Bottom panel: modelled optima (coloured spots) with range between highest and lowest optima (grey bars). For references to colour, readers are referred to the online version of the article. (For interpretation of the references to colour in this figure legend, the reader is referred to the Web version of this article.)

continental-scale compilations. In particular, the NFM model produced anomalous reconstructions that were significantly drier (i.e. higher WTD) than other eco-region models and also anomalous when viewed as z-scores. Although not clearly outlying and therefore included in the data analysis, this was the only region to be partly clustered in the NMDS analysis (section 3.1) and was relatively taxa poor. All sites in this eco-region were from the Rocky Mountains and, although *Sphagnum*-dominated, were typically fens and included sites that were fed by highly acidic and iron-rich groundwater (Booth and Zygmunt, 2005), which appears to have driven a distinct local flora. Although this produced anomalous results for a regional-scale model, when these data were included in a continental-scale model, potentially confounding factors did not overtly effect the magnitude or direction of change of the reconstruction (Fig. 7), whilst valuable ecological information was maintained.

#### 4.3. Spatial scales for transfer function development

Continental-scale models from North America and Europe, as well as a combined model, reconstructed independent test data from both continents identically, in terms of palaeohydrological interpretation. Despite some variability, water table depth optima were also broadly aligned between continents (Fig. 9). Modelled water table depth optima and taxa distribution may vary on local or regional scales due to differences in peatland type (e.g. forested vs. non-forested; Beaulne et al., 2018), climatic context (Booth and Zygmunt, 2005) or the influence of non-linear processes such as permafrost (e.g. at the unpublished Scotty Creek and Toolik sites (Table 1); see also Lamarre et al., 2013). However, the relative position and ecological niches of taxa in respect to surface wetness is often more consistent (Booth and Zygmunt, 2005; Beaulne et al., 2018). Our comparison of water table depth optima and rank between European and North American compilations showed that, with the exception of a single anomalous taxon, differences were relatively small (Fig. 9) and importantly, did not have a noticeable effect on reconstructions of test data from both within and outside of each continent, especially when viewed as residual values (Fig. 8; Swindles et al., 2015a). Therefore, it appears that potentially confounding climatic or peatland type differences that may exist within continental-scale compiled datasets are compensated by more in-depth characterisation of the average ecological niche of each taxon.

These findings also support the recent assertion that transfer functions trained on very large datasets perform well due to the vastly increased number of analogues contained within them, which provide a better representation of testate amoeba ecology than less populated local- or regional-scale models where modern analogues may be either lacking or based on low numbers of samples for some taxa (Amesbury et al., 2016). In a test of regional and supra-regional application of transfer functions, the only difference between reconstructions was in the absolute magnitude of change (i.e. in reconstructed water table depth values), with direction of change, the most reliable variable for palaeoclimatic interpretation, consistent (Turner et al., 2013; Swindles et al., 2015a). Given that the recent suggestion to display transfer function output as standardised z-scores (Swindles et al., 2015a; Amesbury et al., 2016) tends to mitigate magnitude differences, we therefore advocate the further development and use of continental-scale models that maximise modern analogue quality without losing reconstructive skill and provide standard reconstruction tools with directly comparable results.

Continental-scale models from North America (this study) and Europe (Amesbury et al., 2016) have similar performance statistics than regional- or local-scale models, but potentially offer additional

scientific benefit. The compilation and taxonomic harmonisation of such datasets, alongside their archiving in freely available repositories (e.g. Neotoma), permits further community-driven effort towards a better understanding of wide-scale testate amoeba ecology and biogeography that can contextualise and enhance the interpretation of transfer function results. In addition, the lack of significant reduction in performance statistics and similarity of reconstructions produced by a combined North American and European model, when compared to the two continental-scale models suggests that any geographical limit of scale beyond which further compilation of peatland testate amoebae data would not be beneficial, has not yet been reached. We therefore call for the continued synthesis of modern testate amoeba data, particularly for Eurasia. Our results show that harmonisation of this data alongside existing datasets may permit a future Holarctic synthesis of peatland testate amoeba ecology and biogeography. A potential challenge when extending beyond the Holarctic realm is that additional Southern Hemisphere specific taxa (e.g. *Alocodera*, *Apodera*, *Certesella*) will need to be considered, while many characteristic taxa of northern peatlands will be missing (e.g. *Planocarina*, *Hyalosphenia papilio*).

## 5. Conclusions

We compiled a dataset of 1956 modern surface testate amoeba samples from 137 peatlands located throughout the United States of America and Canada. Following data management procedures, a reduced dataset of 1927 samples was used, following exploratory NMDS analysis, to develop continental-scale transfer function models. These models were tested using a range of statistical approaches and application to independent palaeo-data. Though all pruned models tested were valid, WA-Tol (inv) was selected as our preferred model choice. Our new model provides an effective, standardised tool for reconstructing peatland palaeohydrology throughout the North American continent. Using the compiled dataset and models based on EPA Level 1 eco-regions, we examined regional variability within the dataset. Some regions and taxa demonstrated differences in taxonomic diversity and/or biogeography, but these were set against a broad pattern of cosmopolitanism across the dataset. To examine the potential for a future Holarctic synthesis of peatland testate amoeba data, we combined our new North American dataset with an existing recent compilation from Europe to form a combined dataset of >3700 samples. Model outputs from this compilation were equivalent to the North American and European models independently, suggesting that there is scope for further merging of data to develop a future Holarctic dataset and transfer function. Such a dataset would be an extremely valuable community resource, allowing collaborative examination of peatland testate amoeba ecological and biogeographical patterns to an extent not currently possible.

## Author contributions

MJA and RKB conceived the work and compiled/archived the data. MJA conducted data analysis and wrote the manuscript. All authors contributed data, actively discussed the direction of the research and/or contributed to manuscript editing.

## Acknowledgements

We gratefully acknowledge and thank the many landowners and data collectors that have helped to facilitate the many fieldwork campaigns that eventually led to our new database of North American testate amoebae, but who are too numerous to list individually here. Compilation of the individual datasets and their



submission to the Neotoma Paleocology Database was supported by EAR-1550716 under the guidance of RKB. RKB was also funded by the National Science Foundation (EAR-0902441, ATM-0625298) and the United State Geological Survey (USGS-DOI cooperative agreement 06ERAG0019). MJA, DJC, PDMH and HM were funded by the UK Natural Environment Research Council (grants NE/G019851/1, NE/G020272/1, NE/G019673/1 and NE/G02006X/1). HM was also funded by a UK Quaternary Research Association New Research Workers' Award. RJP was funded by the Russian Science Foundation (grant 14-14-00891). EADM was funded by the University of Alaska Anchorage and the Swiss National Science Foundation (grants 205321-109709/1 and 205321-109709/2). JT and NP were funded by the National Sciences and Engineering Research Council of Canada (grant No: 2014–05878).

## Appendix A. Supplementary data

Supplementary data related to this article can be found at <https://doi.org/10.1016/j.quascirev.2018.10.034>.

## References

- Amesbury, M.J., Mallon, G., Charman, D.J., Hughes, P.D.M., Booth, R.K., Daley, T.J., Garneau, M., 2013. Statistical testing of a new testate amoeba-based transfer function for water-table depth reconstruction on ombrotrophic peatlands in north-eastern Canada and Maine, United States. *J. Quat. Sci.* 28, 27–39.
- Amesbury, M.J., Swindles, G.T., Bobrov, A., Charman, D.J., Holden, J., Lamentowicz, M., Mallon, G., Mazei, Y.A., Mitchell, E.A.D., Payne, R.J., Roland, T.P., Turner, T.E., Warner, B.G., 2016. Development of a new pan-European testate amoeba transfer function for reconstructing peatland palaeohydrology. *Quat. Sci. Rev.* 152, 132–151.
- Baas Becking, L.G.M., 1934. *Geobiologie of Inleiding tot de Milieukunde*. Van Stockum & Zoon, The Hague.
- Beaulne, J., Magnan, G., Garneau, M., 2018. Evaluating the potential of testate amoebae as indicators of hydrological conditions in boreal forested peatlands. *Ecol. Indic.* 91, 386–394.
- Beysens, L., Bobrov, A., 2016. Evidence supporting the concept of a regionalized distribution of testate amoebae in the Arctic. *Acta Protozool.* 55, 197–209.
- Booth, R.K., 2001. Ecology of testate amoebae (Protozoa) in two Lake Superior coastal wetlands: implications for paleoecology and environmental monitoring. *Wetlands* 21, 564–576.
- Booth, R.K., 2002. Testate amoebae as paleoindicators of surface-moisture changes on Michigan peatlands: modern ecology and hydrological calibration. *J. Paleolimnol.* 28, 329–348.
- Booth, R.K., 2008. Testate amoebae as proxies for mean annual water-table depth in Sphagnum-dominated peatlands of North America. *J. Quat. Sci.* 23, 43–57.
- Booth, R.K., Zymunt, J.R., 2005. Biogeography and comparative ecology of testate amoebae inhabiting Sphagnum-dominated peatlands in the Great Lakes and Rocky Mountain regions of North America. *Divers. Distrib.* 11, 577–590.
- Booth, R.K., Sullivan, M.E., Sousa, V.A., 2008. Ecology of testate amoebae in a North Carolina pocosin and their potential use as environmental and paleoenvironmental indicators. *Ecoscience* 15, 277–289.
- Charman, D.J., Warner, B.G., 1992. Relationship between testate amoebae (Protozoa: Rhizopoda) and microenvironmental parameters on a forested peatland in northeastern Ontario. *Can. J. Zool.* 70, 2474–2482.
- Charman, D.J., Warner, B.G., 1997. The ecology of testate amoebae (Protozoa: Rhizopoda) in oceanic peatlands in Newfoundland, Canada: modelling hydrological relationships for palaeoenvironmental reconstruction. *Ecoscience* 4, 555–562.
- Charman, D.J., Blundell, A., ACCROTELM Members, 2007. A new European testate amoeba transfer function for palaeohydrological reconstruction on ombrotrophic peatlands. *J. Quat. Sci.* 22, 209–221.
- De Wit, R., Bouvier, T., 2006. “Everything is everywhere, but the environment selects”: what did Baas Becking and Beijerinck really say? *Environ. Microbiol.* 8, 755–758.
- Duckert, C., Blandenier, Q., Kupferschmid, F.A.L., Kosakyan, A., Mitchell, E.A.D., Lara, E., Singer, D., 2018. En garde! Redefinition of *Nebela militaris* (Arcellinida, Hyalospheniidae) and erection of *Alabasta* gen. Nov. *Eur. J. Protistol.* (in press).
- Fernández, L.D., Fournier, B., Rivera, R., Lara, E., Mitchell, E.A.D., Hernández, C.E., 2016. Water–energy balance, past ecological perturbations and evolutionary constraints shape the latitudinal diversity gradient of soil testate amoebae in south-western South America. *Global Ecol. Biogeogr.* 25, 1216–1227.
- Foissner, W., 2006. Biogeography and dispersal of micro-organisms: a review emphasizing protists. *Acta Protozool.* 45, 111–136.
- Foissner, W., 2008. Protist diversity and distribution: some basic considerations. *Biodivers. Conserv.* 17, 235–242.
- Fournier, B., Coffey, E.E.D., van der Knaap, W.O., Fernández, L.D., Bobrov, A., Mitchell, E.A.D., 2015. A legacy of human-induced ecosystem changes: spatial processes drive the taxonomic and functional diversities of testate amoebae in Sphagnum peatlands of the Galápagos. *J. Biogeogr.* 43, 533–543.
- Geisen, S., Mitchell, E.A.D., Wilkinson, D.M., Adl, S., Bonkowski, M., Brown, M.W., Fiore-Donno, A.M., Heger, T.J., Jassey, V.E.J., Krashevskaya, V., Lahr, D.J.G., Marcisz, K., Mulot, M., Payne, R., Singer, D., Anderson, O.R., Charman, D.J., Ekelund, F., Griffiths, B.S., Rønn, R., Smirnov, A., Bass, D., Belbahri, L., Berney, C., Blandenier, Q., Chatzinotas, A., Clarholm, M., Dunthorn, M., Feest, A., Fernández, L.D., Foissner, W., Fournier, B., Gentekaki, E., Hájek, M., Helder, J., Jousset, A., Koller, R., Kumar, S., La Terza, A., Lamentowicz, M., Mazei, Y., Santos, S.S., Seppey, C.V.W., Spiegel, F.W., Walochnik, J., Winding, A., Lara, E., 2017. Soil protistology rebooted: 30 fundamental questions to start with. *Soil Biol. Biochem.* 111, 94–103.
- Hammer, Ø., Harper, D.A.T., Ryan, P.D., 2001. PAST: paleontological statistics software package for education and data analysis. *Palaeontol. Electron.* 4, 9pp. [http://palaeo-electronica.org/2001\\_1/past/issue1\\_01.htm](http://palaeo-electronica.org/2001_1/past/issue1_01.htm).
- Heger, T.J., Mitchell, E.A.D., Leander, B.S., 2013. Holarctic phylogeography of the testate amoeba *Hyalosphenia papilio* (Amoebozoa: Arcellinida) reveals extensive genetic diversity explained more by environment than dispersal limitation. *Mol. Ecol.* 22, 5172–5184.
- Juggins, S., 2013. Quantitative reconstructions in palaeolimnology: new paradigm or sick science? *Quat. Sci. Rev.* 64, 20–32.
- Juggins, S., 2015. Rioja: analysis of quaternary science data. R Package Version 0.9-5. <https://cran.r-project.org/web/packages/rioja/index.html>.
- Kosakyan, A., Lahr, D.J.G., Mulot, M., Meisterfeld, R., Edward, A., Mitchell, D., Lara, E., 2016. Phylogenetic reconstruction based on COI reshuffles the taxonomy of hyalosphenid shelled testate amoebae and reveals the convoluted evolution of shell plate shapes. *Cladistics* 32, 606–623.
- Laggou-Défarge, F., Mitchell, E., Gilbert, D., Disnar, J.R., Comont, L., Warner, B.G., Buttler, A., 2008. Cut-over peatland regeneration assessment using organic matter and microbial indicators (bacteria and testate amoebae). *J. Appl. Ecol.* 45, 716–727.
- Lamarre, A., Garneau, M., Asnong, H., 2012. Holocene paleohydrological reconstruction and carbon accumulation of a permafrost peatland using testate amoeba and macrofossil analyses, Kuujuaarapik, subarctic Québec, Canada. *Rev. Palaeobot. Palynol.* 186, 131–141.
- Lamarre, A., Magnan, G., Garneau, M., Boucher, É., 2013. A testate amoeba-based transfer function for paleohydrological reconstruction from boreal and sub-arctic peatlands in northeastern Canada. *Quat. Int.* 306, 88–96.
- Lamentowicz, M., Mitchell, E.A.D., 2005. The ecology of testate amoebae (protists) in *Sphagnum* in north-western Poland in relation to peatland ecology. *Microb. Ecol.* 50, 48–63.
- Lara, E., Rousset-Delif, L., Fournier, B., Wilkinson, D.M., Mitchell, E.A.D., 2016. Soil microorganisms behave like macroscopic organisms: patterns in the global distribution of soil euglyphid testate amoebae. *J. Biogeogr.* 43, 520–532.
- Li, H., Wang, S., Zhao, H., Wang, M., 2015. A testate amoeba transfer function from *Sphagnum*-dominated peatlands in the Lesser Khingan Mountains, NE China. *J. Paleolimnol.* 54, 189–203.
- Magnan, G., Garneau, M., 2014. Evaluating long-term regional climate variability in the maritime region of the St. Lawrence North Shore (eastern Canada) using a multi-site comparison of peat-based paleohydrological records. *J. Quat. Sci.* 29, 209–220.
- Marcisz, K., Lamentowicz, Ł., Stowińska, S., Stowiński, M., Muszak, W., Lamentowicz, M., 2014. Seasonal changes in Sphagnum peatland testate amoeba communities along a hydrological gradient. *Eur. J. Protistol.* 50, 445–455.
- Markel, E.R., Booth, R.K., Qin, Yangmin, 2010. Testate amoebae and <sup>13</sup>C of Sphagnum as surface-moisture proxies in Alaskan peatlands. *Holocene* 20, 463–475.
- Mitchell, E.A.D., Charman, D.J., Warner, B.G., 2008. Testate amoebae analysis in ecological and paleoecological studies of wetlands: past, present and future. *Biodivers. Conserv.* 17, 2115–2137.
- Oksanen, J., Blanchet, F.G., Kindt, R., Legendre, P., Minchin, P.R., Hara, R.B.O., Simpson, G.L., Solymos, P., Stevens, M.H.H., Wagner, H., 2015. Package “vegan” Version 2.3-1.
- Oliverio, A.M., Lahr, D.J.G., Nguyen, T., Katz, L. a., 2014. Cryptic diversity within morphospecies of testate amoebae (Amoebozoa: Arcellinida) in New England bogs and fens. *Protist* 165, 196–207.
- O'Malley, M.A., 2007. The nineteenth century roots of “everything is everywhere”. *Nat. Rev. Microbiol.* 5, 647–651.
- O'Malley, M.A., 2008. “Everything is everywhere: but the environment selects”: ubiquitous distribution and ecological determinism in microbial biogeography. *Stud. Hist. Philos. Sci. C Stud. Hist. Philos. Biol. Biomed. Sci.* 39, 314–325.
- Payne, R.J., Kishaba, K., Blackford, J.J., Mitchell, E.A.D., 2006. Ecology of testate amoebae (Protista) in south-central Alaska peatlands: building transfer-function models for palaeoenvironmental studies. *Holocene* 16, 403–414.
- Payne, R.J., Ryan, P.A., Nishri, A., Gophen, M., 2010. Testate amoeba communities of the drained Hula wetland (Israel): implications for ecosystem development and conservation management. *Wetl. Ecol. Manag.* 18, 177–189.
- Payne, R.J., Lamentowicz, M., Mitchell, E.A.D., 2011. The perils of taxonomic inconsistency in quantitative palaeoecology: experiments with testate amoeba data. *Boreas* 40, 15–27.
- Payne, R.J., Telford, R.J., Blackford, J.J., Blundell, A., Booth, R.K., Charman, D.J., Lamentowicz, M., Mitchell, E.A.D., Potts, G., Swindles, G.T., Warner, B.G., Lamentowicz, L., Woodland, W.A., 2012. Testing peatland testate amoeba transfer for clustered training-sets. *Holocene* 22, 819–825.
- Payne, R.J., Babeshko, K.V., van Bellen, S., Blackford, J.J., Booth, R.K., Charman, D.J.,

- Ellershaw, M.R., Gilbert, D., Hughes, P.D.M., Jassey, V.E.J., Lamentowicz, L., Lamentowicz, M., Malysheva, E.A., Mauquoy, D., Mazei, Y.A., Mitchell, E.A.D., Swindles, G.T., Tsyganov, A., Turner, T.E., Telford, R.J., 2016. Significance testing testate amoeba water table reconstructions. *Quat. Sci. Rev.* 138, 131–135.
- Pelletier, N., Talbot, J., Olefeldt, D., Turetsky, M.R., Blodau, C., Sonnentag, O., Quinton, W.L., 2017. Influence of Holocene permafrost aggradation and thaw on the paleoecology and carbon storage of a peatland complex in northwestern Canada. *Holocene* 27, 1391–1405.
- Pérez-Juárez, H., Serrano-Vázquez, A., Kosakyan, A., Mitchell, E.A.D., Rivera Aguilar, V.M., Lahr, D.J.G., Hernández Moreno, M.M., Cuellar, H.M., Eguiarte, L.E., Lara, E., 2017. *Quadrullella texcalense* sp. nov. from a Mexican desert: an unexpected new environment for hyalospheniid testate amoebae. *Eur. J. Protistol.* 61, 253–264.
- Reczuga, M.K., Swindles, G.T., Grewling, L., Lamentowicz, M., 2015. *Arcella peruviana* sp. nov. (Amoebozoa: Arcellinida, Arcellidae), a new species from a tropical peatland in Amazonia. *Eur. J. Protistol.* 51, 437–449.
- Roe, H.M., Elliott, S.M., Patterson, R.T., 2017. Re-assessing the vertical distribution of testate amoeba communities in surface peats: implications for palaeohydrological studies. *Eur. J. Protistol.* 60, 13–27.
- Roland, T.P., Amesbury, M.J., Wilkinson, D.M., Charman, D.J., Convey, P., Hodgson, D.A., Royle, J., Clauß, S., Völcker, E., 2017. Taxonomic implications of morphological complexity within the testate amoeba genus *Corythion* from the Antarctic Peninsula. *Protist* 168, 565–585.
- Singer, D., Kosakyan, A., Seppey, C.V.W., Pillonel, A., Fernández, L.D., Fontaneto, D., Mitchell, E.A.D., Lara, E., 2018. Environmental filtering and phylogenetic clustering correlate with the distribution patterns of cryptic protist species. *Ecology* 99, 904–914.
- Smith, H.G., Wilkinson, D.M., 2007. Not all free-living microorganisms have cosmopolitan distributions – the case of *Nebela* (Apodera) vas Certes (Protozoa: Amoebozoa: Arcellinida). *J. Biogeogr.* 34, 1822–1831.
- Smith, H.G., Bobrov, A., Lara, E., 2008. Diversity and biogeography of testate amoebae. *Biodivers. Conserv.* 17, 329–343.
- Sullivan, M.E., Booth, R.K., 2011. The potential influence of short-term environmental variability on the composition of testate amoeba communities in Sphagnum peatlands. *Microb. Ecol.* 62, 80–93.
- Swindles, G.T., Charman, D.J., Roe, H.M., Sansum, P.A., 2009. Environmental controls on peatland testate amoebae (Protozoa: Rhizopoda) in the North of Ireland: implications for Holocene palaeoclimate studies. *J. Paleolimnol.* 42, 123–140.
- Swindles, G.T., Lawson, I.T., Matthews, I.P., Blaauw, M., Daley, T.J., Charman, D.J., Roland, T.P., Plunkett, G.M., Schettler, G., Gearey, B.R., Turner, T.E., Rea, H.A., Roe, H.M., Amesbury, M.J., Chambers, F.M., Holmes, J., Mitchell, F.J.G., Blackford, J.J., Blundell, A., Branch, N., Holmes, J., Langdon, P.G., McCarroll, J., McDermott, F., Oksanen, P.O., Pritchard, O., Stastney, P., Stefanini, B., Young, D., Wheeler, J., Becker, K., 2013. Centennial-scale climate change in Ireland during the Holocene. *Earth Sci. Rev.* 126, 300–320.
- Swindles, G.T., Reczuga, M., Lamentowicz, M., Raby, C.L., Turner, T.E., Charman, D.J., Gallego-Sala, A., Valderrama, E., Williams, C., Draper, F., Honorio Coronado, E.N., Roucoux, K.H., Baker, T., Mullan, D.J., 2014. Ecology of testate amoebae in an Amazonian peatland and development of a transfer function for palaeohydrological reconstruction. *Microb. Ecol.* 68, 284–298.
- Swindles, G.T., Holden, J., Raby, C.L., Turner, T.E., Blundell, A., Charman, D.J., Menberu, M.W., Kløve, B., 2015a. Testing peatland water-table depth transfer functions using high-resolution hydrological monitoring data. *Quat. Sci. Rev.* 120, 107–117.
- Swindles, G.T., Morris, P.J., Mullan, D., Watson, E.J., Turner, T.E., Roland, T.P., Amesbury, M.J., Kokfelt, U., Schoning, K., Pratte, S., Gallego-Sala, A., Charman, D.J., Sanderson, N., Garneau, M., Carrivick, J., Wouds, C., Holden, J., Parry, L., Galloway, J.M., 2015b. The long-term fate of permafrost peatlands under rapid climate warming. *Nat. Sci. Reports*. 5, 17951. <https://doi.org/10.1038/srep17951>.
- Talbot, J., Richard, P.J.H., Roulet, N.T., Booth, R.K., 2010. Assessing long-term hydrological and ecological responses to drainage in a raised bog using paleoecology and a hydrosequence. *J. Veg. Sci.* 21, 143–156.
- Telford, R.J., 2015. palaeoSig: Significance Tests for Palaeoenvironmental Reconstructions. R Package Version 1.1-3. <https://cran.r-project.org/web/packages/palaeoSig/>.
- Telford, R.J., Birks, H.J.B., 2005. The secret assumption of transfer functions: problems with spatial autocorrelation in evaluating model performance. *Quat. Sci. Rev.* 24, 2173–2179.
- Telford, R.J., Birks, H.J.B., 2009. Evaluation of transfer functions in spatially structured environments. *Quat. Sci. Rev.* 28, 1309–1316.
- Telford, R.J., Birks, H.J.B., 2011a. Effect of uneven sampling along an environmental gradient on transfer-function performance. *J. Paleolimnol.* 46, 99–106.
- Telford, R.J., Birks, H.J.B., 2011b. A novel method for assessing the statistical significance of quantitative reconstructions inferred from biotic assemblages. *Quat. Sci. Rev.* 30, 1272–1278.
- Turner, T.E., Swindles, G.T., Charman, D.J., Blundell, A., 2013. Comparing regional and supra-regional transfer functions for palaeohydrological reconstruction from Holocene peatlands. *Palaeogeogr. Palaeoclimatol. Palaeoecol.* 369, 395–408.
- van Bellen, S., Garneau, M., Booth, R.K., 2011. Holocene carbon accumulation rates from three ombrotrophic peatlands in boreal Quebec, Canada: impact of climate-driven ecohydrological change. *Holocene* 21, 1217–1231.
- van Bellen, S., Mauquoy, D., Payne, R.J., Roland, T.P., Daley, T.J., Hughes, P.D.M., Loader, N.J., Street-Perrott, F.A., Rice, E.M., Pancotto, V. a., Bellen, S.V.A.N., 2014. Testate amoebae as a proxy for reconstructing Holocene water table dynamics in southern Patagonian peat bogs. *J. Quat. Sci.* 29, 463–474.
- van Bellen, S., Mauquoy, D., Hughes, P.D., Roland, T.P., Daley, T.J., Loader, N.J., Street-Perrott, F.A., Rice, E.M., Pancotto, V.A., Payne, R.J., 2016. Late-Holocene climate dynamics recorded in the peat bogs of Tierra del Fuego, South America. *Holocene* 26, 489–501.
- Warner, B.G., 1987. Abundance and diversity of testate amoebae (Rhizopoda, Testacea) in Sphagnum peatlands in Southwestern Ontario, Canada. *Arch. fur Protistenkd.* 133, 173–189.
- Warner, B.G., Charman, D.J., 1994. Holocene changes on a peatland in northwestern Ontario interpreted from testate amoebae (Protozoa) analysis. *Boreas* 23, 270–279.
- Willis, K.S., Beilman, D., Booth, R.K., Amesbury, M.J., Holmquist, J., MacDonald, G., 2015. Peatland paleohydrology in southern West Siberian Lowlands: comparison of multiple testate amoeba transfer functions, sites, and Sphagnum <sup>13</sup>C values. *Holocene* 25, 1425–1436.
- Zhang, H., Piilo, S.R., Amesbury, M.J., Charman, D.J., Gallego-Sala, A.V., Välranta, M.M., 2018. The role of climate change in regulating Arctic permafrost peatland hydrological and vegetation change over the last millennium. *Quat. Sci. Rev.* 182, 121–130.