



Statistical Agent Based Modelization of the Phenomenon of Drug Abuse

Riccardo Di Clemente^{1,2} & Luciano Pietronero^{1,3}

¹Istituto dei Sistemi Complessi-CNR, Via dei Taurini 19, 00185 Rome, Italy, ²IMT Institute for Advanced Studies Lucca, Piazza S. Ponziano, 6 55100, Lucca, Italy, ³Università "La Sapienza", Dip. di Fisica, Piazz.le Aldo Moro 2, 00185, Rome, Italy.

SUBJECT AREAS:
STATISTICAL PHYSICS,
THERMODYNAMICS AND
NONLINEAR DYNAMICS
MODELLING AND THEORY
BIOLOGICAL MODELS
APPLIED PHYSICS

Received
30 March 2012

Accepted
9 July 2012

Published
25 July 2012

Correspondence and
requests for materials
should be addressed to
R.D.C. (riccardo.
diclemente@imflucca.
it)

We introduce a statistical agent based model to describe the phenomenon of drug abuse and its dynamical evolution at the individual and global level. The agents are heterogeneous with respect to their intrinsic inclination to drugs, to their budget attitude and social environment. The various levels of drug use were inspired by the professional description of the phenomenon and this permits a direct comparison with all available data. We show that certain elements have a great importance to start the use of drugs, for example the rare events in the personal experiences which permit to overcome the barrier of drug use occasionally. The analysis of how the system reacts to perturbations is very important to understand its key elements and it provides strategies for effective policy making. The present model represents the first step of a realistic description of this phenomenon and can be easily generalized in various directions.

The ambition to develop a quantitative description of people's behavior and introduce novel ideas and methods in socioeconomic disciplines¹⁻³ (see also the future ict project www.futurict.eu) is one of the main challenges of statistical physics and complexity theory. Agent based models (ABMs)^{4,5} represent a broad framework to address these questions. They can describe some of the most important properties that get inspiration from physical phenomena. These are for example the importance of heterogeneity, large (critical) fluctuations, self-organized criticality and the lack of cause-effect relation. The key features of ABM is the suitable choice of the nature of the agents, their interactions and their dynamical evolution.

In this paper, we present an Agent Based Model which aims to describe, at a reasonably microscopic level, the phenomenon of drug abuse, its evolution and control. The scheme of the model was inspired by the participation of one of the authors (L.P.) to the national initiative PREVO.LAB⁶⁻⁸ whose objective is to analyze and control the phenomenon of drug abuse in Italy. Therefore, the model is closely aligned with the professional analysis in this field and permits a direct comparison of concepts and parameters with those actually observed and analyzed in reality. In this respect, the model is rather realistic and suitable for direct applications, including control, forecast of the phenomenon and for policymaking. The information in this field is very scattered and ranges from highly accurate information about people who become hospitalized to the little known detail about those at the beginning of the process. The model aim is to provide a complete framework to describe the phenomenon, whose parameters are fixed by the best known facts. In this way, the model is able to extrapolate the knowledge of the less known submerged elements. This Agent Based Model, with its parameters fixed by real observations, exhibits the following features:

- The tail fluctuations of personal experience (environment and interactions) are critical components for overcoming the natural barrier to start drug consumption, for the first time. This also implies that the heterogeneous nature of the social-network is very important and cannot be represented by an average situation.
- The economic barrier plays a relatively minor role with an appreciable importance only at the beginning.
- The model permits to track the individual history of an agent and in turn, this information could be directly compared with medical and other data.
- One can analyze the response of the system to external changes of some parameters. This can help optimizing the control and defining a suitable policy.
- The model is flexible and can be easily improved by introducing specific elements that may be inspired by new observations. For example, it could be implemented in a specific social complex network⁹ and one can also introduce different drugs with different market socioeconomic characteristics, related for example to the age, the economic background or the gender.



In summary, we introduce an ABM with variables and parameters defined in a way that makes efficient use of all data and information available in the field. This permits us to achieve a complete description of the phenomenon both at the individual and global level, and to identify its crucial elements and its responsiveness to changes in any of its parameters.

The study of drug consumption and trend predictions began in the '70s with the analysis of trend historical data of New York City¹⁰. In the '90s Everingham and Rydell¹¹ proposed a Markovian process to analyze and predict cocaine consumption in the USA. The first ABM model introduced was *Drugmart* by Agar and Wilson^{12,13}, revised by the UK Office of Science and Technology report¹⁴, which is a simple network model. Another more complex model is the Australian *SimDrug*¹⁵ which simulates the consumption of heroin in Melbourne with accurate people's dynamic reconstruction.

With respect to these preliminary models, our ABM has a much higher level of complexity and realism and it provides information on all elements of the phenomenon both at the individual and global level. To this end, it is important to note that our main conclusions could not have been derived from these previous models.

Results

The model. In our model, an agent i , with $i \in [1; N]$, is characterized by a number of parameters and interacts with the environment and with the other agents at each time $t \in [1; T]$. In the dynamic the unit time step will correspond to one week. We now briefly introduce the key elements of the model, which are described in more detail in the methods section.

Age. $y_i(t) = [10 : 100]$ years. The starting distribution of the agents' age at t_0 is taken from the Italian data of ISTAT. In a first stage, we consider the property of a static situation $y_i(t) = y_i(t_0)$. Later, we also introduce the dynamic evolution of the system by increasing the agents' age with time.

Consumers type. $S_i(t) = 0; 1; 2; 3; 4$ defines the consumption stage and the level of dependence reached by a consumer: non users ($S_i = 0$); mini user with age $y_i(t) < 26$ ($S_i = 1$); occasional user ($S_i = 2$); frequent user not pathological ($S_i = 3$); heavy user pathological ($S_i = 4$). These categories are inspired by the professional classification of drug abuse from "Diagnostic and Statistical Manual of Mental Disorders"¹⁶. The mini users with $y_i < 26$ are agents with low income that can be in contact with the normal dose and with a lower quantity of drug, the mini dose. This mini dose, as we will see later, was introduced by drug cartel with the purpose of stimulating in the young consumers a possible future dependency on drug^{6,7}.

Personal budget and saving behavior. Behavioral analysis⁷ has shown that the money a person would spend on initial drug consumption is rather related to personal saving attitude for leisure opportunities, than to the total personal budget. Therefore, the only variation we make in the budget $m_i(y_i(t))$ refers to the difference between the adult working population with age $y_i(t) \geq 26$ with $m_i(y_i(t)) = 1$, and young unemployed or student population with age $y_i(t) < 26$ with $m_i(y_i(t)) = 0.2$. The threshold of age 26 represents the average age of the change of spending and work habits⁷. The crucial point will be the parameter $\gamma_i \in [0; \infty]$ (saving behavior), which describes the tendency of an agent to save or spend money. Inspired by various indicators of social behavior, we assign to it a lognormal distribution¹⁷ with variance Γ_σ and average Γ_μ . A value of $\gamma_i \approx 0$ means that the agent is inclined to spend his leisure budget while $\gamma_i \geq 1$ corresponds to a strong willingness to save money and do not use it for buying drugs.

Personal exposure. e_i describes every possible contact between the agent and the drug world, in particular the input the agent receives about drug consumption. In the present model we adopt

a simplified model of interaction among agents but the generalization to a complex social network would be a natural extension in the model^{9,18,22}.

Inclination to drug. β_i controls the intrinsic (genetic, educational, cultural, etc.) agent's barrier towards drugs. Also in this case, inspired by the social studies¹⁹, we adopt lognormal distribution with $\sigma = B_\sigma$, $\mu = B_\mu$. For every agent we define the barrier to be overcome in order to start using drugs: $b_i^*(t) = \beta_i / \alpha(y_i(t))$; where $\alpha(y_i(t))$ is a function dependent on the agent's age and it has the characteristic to increase the barrier for older agents. This function is described by a simple analytical form which reproduces the data of Prevo.Lab⁶.

Drug addiction. Describes how an agent becomes addicted to drugs and how this modifies her behavior. This property is defined by the function $d_i(\pi_i(t), S_i(t))$ which can increase or decrease $b_i^*(t)$, depending on the persistence of the agent in a given stage, where $\pi_i(t)$ is an exponential function of consecutive drug assumption. The inclusion of this effect redefines the drug dependence function: $b_i(t) = b_i^*(t) - d_i(\pi_i(t), S_i(t))$.

In the drug market there are two different dose levels: mini-dose and dose. The first has a lower quantity and a cheaper price. It is used for attracting young people to drug consumption while the second represents the normal dose for adults and for young usual users. The mini-dose is very important for the analysis of drug consumption because it is often the way in which the young generations start the drug use. Moreover it represents the cheapest and easiest way of transmission of drug among young people⁷. In our model the mini-dose could symbolize a light drug that can lead to the intake of the normal one. The mini-dose price $p_m(t)$ is supposed to be substantially smaller than a dose. We have chosen a lower magnitude order as reasonable estimation of the mini dose price which is about one tenth of the dose⁶. The price of the dose $p_d(t)$ is based on a simplified relation between supply and demand. In our case we assume that the total supply is fixed so the price is simply due to the total number of users.

$$p_d(t) = \frac{\sum_{k=1}^N \delta(S_k(t) = 1,2,3,4)}{N} \quad p_m(t) = \frac{p_d(t)}{10} \quad (1)$$

This relation could be easily made more realistic with a variable level of total drug amount.

The agents interact and evolve through the comparison of the two major barriers: the *Economic Barrier* "EB". and the *Socio-Emotional Barrier* "SEB". The first barrier compares the price of the drug with the buying capacity and it is defined by:

$$\begin{cases} \frac{p_m(t)}{m_i(y_i(t))} < 1 - \gamma_i & \text{if } y_i(t) < 26 \\ \frac{p_d(t)}{m_i(y_i(t))} < 1 - \gamma_i & \text{if } y_i(t) \geq 26 \end{cases} \quad (2)$$

The second barrier has the role of describing the social opportunities and the emotional process involved in drug consumption. The social opportunities are defined in terms of the events by which the agents are subjected during a time unit. We describe this "daily noise" by $r_i(t)$, random number drawn each time for each agent from a Gaussian distribution, $R_\mu = 0$, R_σ . Our choice to use the Gaussian distribution is due in large part to the lack of quantitative information that is available. It was also chosen because of the symmetric shape that could lead to a daily event that could generate a positive or negative effect in the drug intake. When more information becomes available, it will be easy to modify accordingly. The condition to overcome the SEB is defined by: $b_i(t) + r_i(t) < e_i(t)$.

We have now all the elements that define the dynamics and the interaction between the agents. In summary the most important



parameters of the model are γ_i , $r_i(t)$ and β_i which are respectively: money saving behavior, daily noise and intrinsic inclination to drug.

We can define the transition probability of each agent from the stage $S_i(t)$ to $S_i(t + 1)$ as indicated in Figure 1a. The corresponding rates are described in detail in the methods section.

Tuning the parameters. The first point we consider is to tune the model parameters to a realistic description of the observed data. A crucial parameter in this respect is the observed fraction of people using drugs. In order to address this question we have made several simulations with $N = 1000$ and $T = 1000$ (the time unit t is one week). The strategy is to fix two distributions and examine the change of drug using population during the variation of the third one. Then we repeat the operation for all three distributions. In Figure 1b,c,d we see the change depending on the three distributions. We choose to have in our population about 10% of drug users (a realistic value considering all different drugs^{6,20,21}, which could be adjusted when better data is available). When studying the real drug consumption, in addition to these total values, it is important to split the agents in four age ranges⁶ labeled as: young (15 – 25), young-adult (26 – 35), adult (36 – 45) and senior (45 – 100). Also, the individual percentage of users within the four age ranges is used to fix our parameters. These procedures define the three distributions, which we name “Usual Distributions”, UD:

$$\begin{cases} \beta_i & \rightarrow \text{lognormal}(B_\mu = 1.2, B_\sigma = 2.7) \\ \gamma_i & \rightarrow \text{lognormal}(\Gamma_\mu = 0.6, \Gamma_\sigma = 0.9) \\ r_i(t) & \rightarrow \text{gaussian}(R_\mu = 0, R_\sigma = 0.6) \end{cases} \quad (3)$$

Therefore, these optimized distributions provide a complete and realistic parametrization of our model which can now be used to investigate a variety of problems. We start by considering the individual personal history per agent.

Individual agent history. It is interesting to note that the individual history can be vastly different in reality and we are going to observe that our ABM is able to reproduce a dynamic variety of agent’s history. The table in Fig. 2a shows $\Delta t = 68$ consecutive iterations of eight users, and it outlines some of the different users typology that can be produced by the model:

- #64 is a senior agent that never tested drugs;
- #141 is a young agent that, as an occasional consumer, tries the normal dose;
- #1 (young-adult) and #343 (young) are two agents that are occasional consumers;
- #15 (young-adult) and #130 (young) are both heavy consumers that evolve into addicted;
- #45 (adult) and #494 (young) are two agents that try drugs on extremely rare occasions.

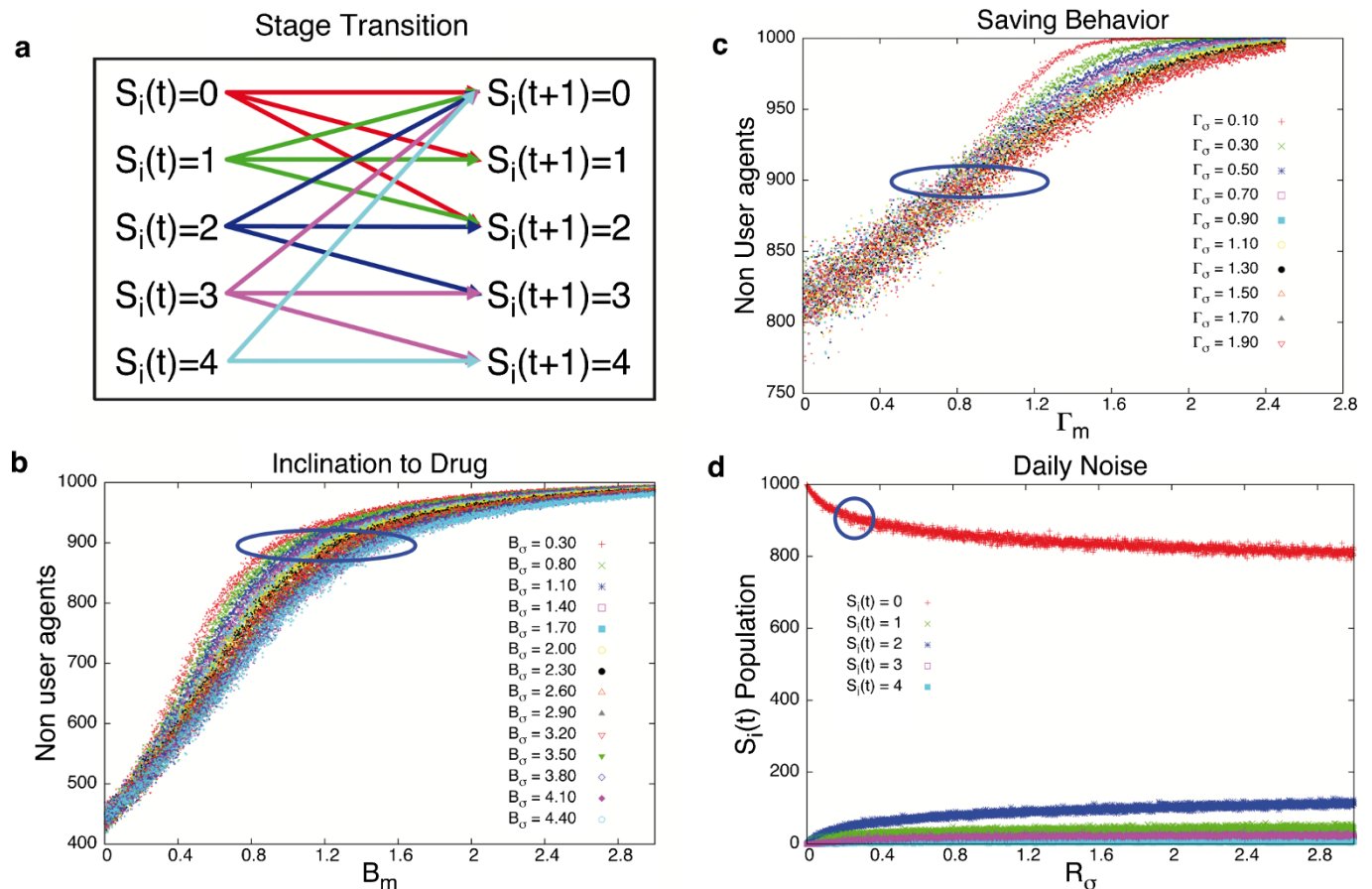
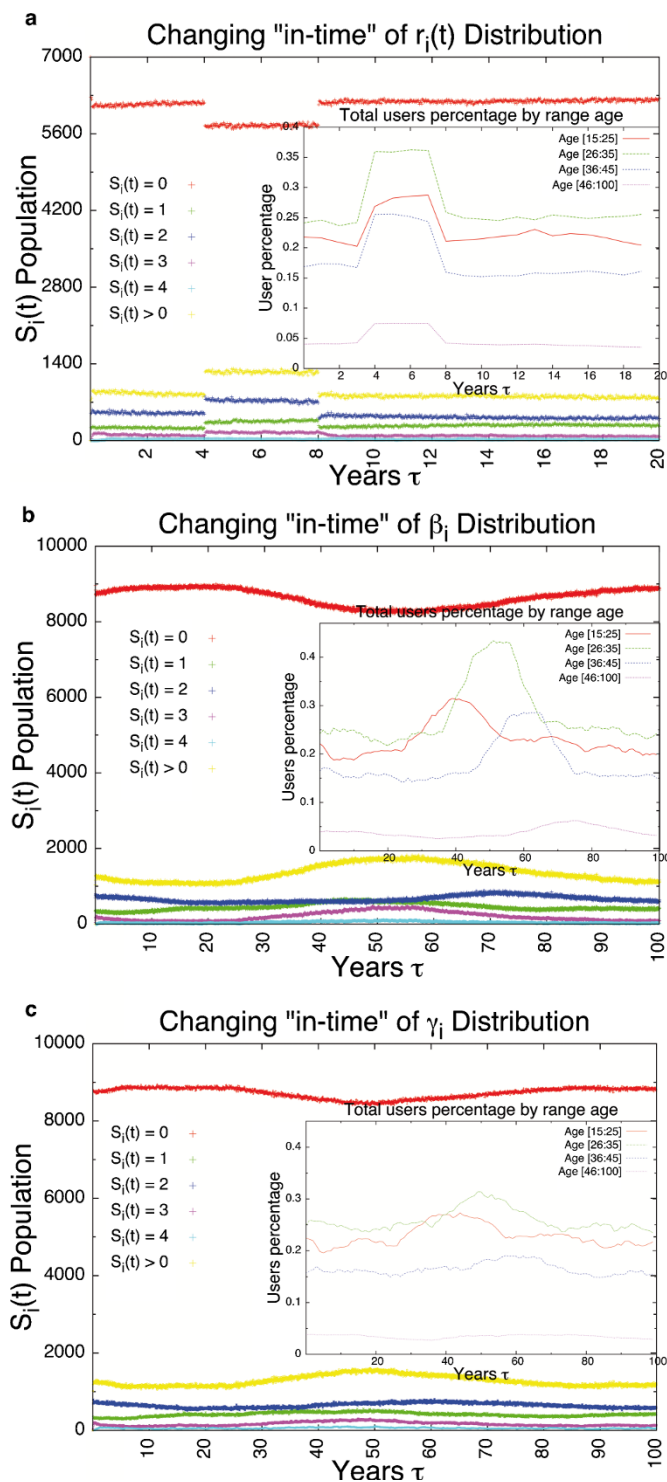


Figure 1 | Stage transitions and parameter settings. (a) All possible stage transitions for an agent at stage $S_i(t)$. (b) (c) (d) Simulations intended to select the main parameter of the model in relation to the realistic stage of the phenomenon (see text for more details). In particular in (b) we show the effect of the parameter β_i (inclination to drug) distribution (B_m ; B_σ), in (c) effect of a parameter γ_i (saving behavior) distribution (Γ_m ; Γ_σ) and in (d) r_i (daily noise) distribution ($R_m = 0$; R_σ). The blue circles identify the realistic areas to fix the values of the three distributions so that they correspond to a total of 10% of users. This parameter optimization refers also to the age ranges discussed in the text.



In Figure 3a we change the daily noise distribution from the UD with $R_\mu = 0.3$, $R_\sigma = 1.6$, with $t^+ = 4\tau$. The Figure shows how an increase of noise leads to an increase in the number of agents in the drug stage. As it is shown from the insert of Figure 3a the $r_i(t)$ distribution has different impact for each age range, given the dependency of $b_i^+(t)$ on age.

Figure 3b exhibits the change of the population stages $S_i(t)$ due to the modification of the intrinsic inclination toward drug use distribution ($B_\mu = 1.2$, $B_\sigma = 2.7$) for the new born agent between $20\tau < t < 40\tau$. The agents who are born during the perturbation periods are more inclined to use drugs than the others. The insert of Figure 3b

shows the trends between the age ranges and how the aging of the new agents increases temporally the number of drug users.

In Figure 3c we change the tendency of agent spending behavior. We replace the distribution of γ_i from the UD with ($\Gamma_\mu = 0.1$, $\Gamma_\sigma = 0.3$) for the new born between $20\tau < t < 40\tau$. During this perturbation period the new born agents are more inclined to spend money for leisure, in this case drug. One can see from the insert of the picture the different trend among age ranges. According to the analysis, the saving behavior does not appear to have an important role in explaining drug assumption. The decrease in-time the γ_i distribution

shows the trends between the age ranges and how the aging of the new agents increases temporally the number of drug users.

In Figure 3c we change the tendency of agent spending behavior. We replace the distribution of γ_i from the UD with ($\Gamma_\mu = 0.1$, $\Gamma_\sigma = 0.3$) for the new born between $20\tau < t < 40\tau$. During this perturbation period the new born agents are more inclined to spend money for leisure, in this case drug. One can see from the insert of the picture the different trend among age ranges. According to the analysis, the saving behavior does not appear to have an important role in explaining drug assumption. The decrease in-time the γ_i distribution

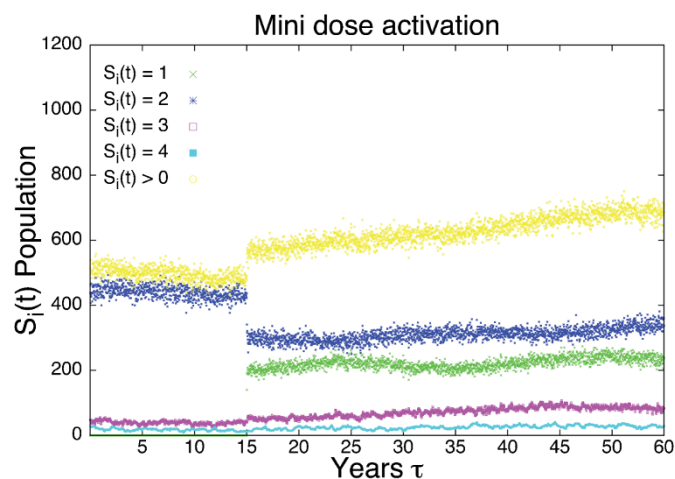


Figure 4 | Mini dose activation. We consider a population of $N = 7000$ agents. At the beginning the market is without the mini dose, at a time $t = 15\tau$ the mini dose is introduced in the system for young people. We only show the drug user stages and one can see an immediate change of the global users followed by a further increase of addict population. The results show that the effect of mini dose for young generation represents an extremely important element for the dynamics of the system.

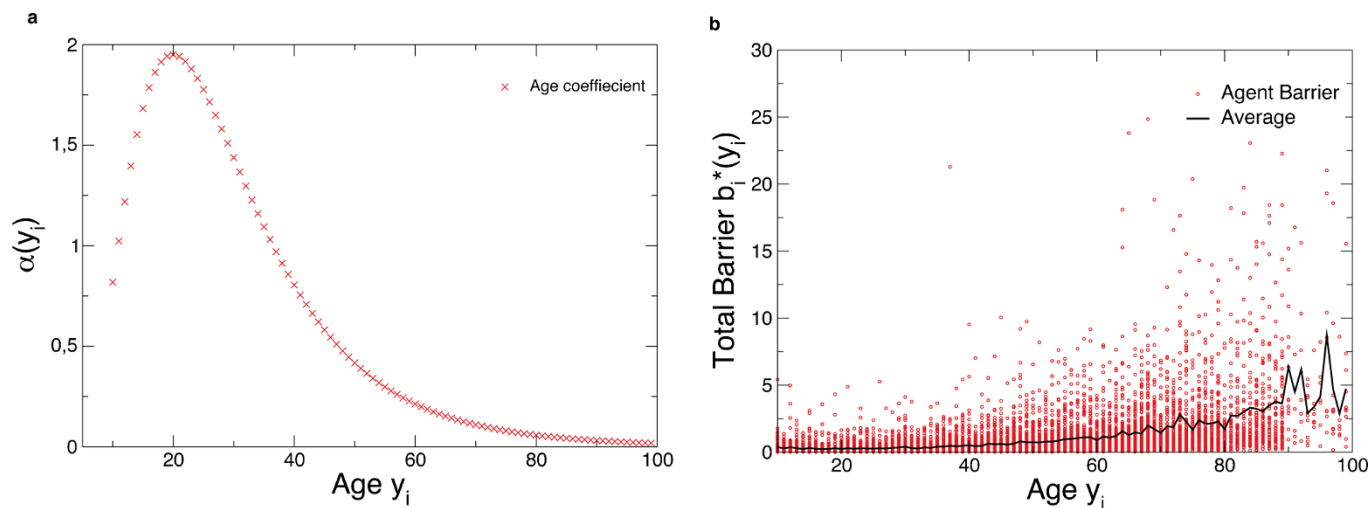


Figure 5 | Studies of barrier age dependence. (a) The function age coefficient ($\alpha(y_i)$) is described by a simple analytical form which is a reproduction of Prevo.Lab's data. (b) This is an example of a distribution of the intrinsic agent barrier with age dependence $b_i^*(y_i)$ for a simulation of 10000 agents.

produces a limited impact in the number of users compared to the effect β_i .

Finally we focus on the role that mini users have on the introduction of drug among the new generations. This is an important point because it is hard to monitor and as an appreciable effect only after a long time. In Figure 4, we compare two situations of a population evolution. For the first 15 τ years the simulation does not consider the mini-dose. Consecutively we included the mini user. We can see that the existence of mini user stage leads after many years to a large increase in the total number of drug users.

Discussion

In conclusion, we have developed an agent based model for the phenomena of drug use, which is relatively simple, but at the same time rather realistic. Its concept and parameters have been established in close relation with the professional studies of the real phenomenon. The model permits the study of the problem at the individual and global level. The individual histories of the agents can be extremely diverse and appear to provide a realistic description of the real situation which could be easily compared to medical data directly. At the global level we can identify the crucial most important parameters, as well as those that play a minor role. This leads to a basic understanding of the complexity of the phenomenon and to the possibility of analyzing how the situation changes if the parameters are modified. This point is essential in defining the strategies for controlling and reducing the phenomenon.

One of the main conclusions of our studies is the fact that drug use is usually triggered by a rare event in the personal experience. This shows the importance of the tail of these heterogeneous experiences, which allows us to predict that the introduction of additional heterogeneity in the structure of the society will lead to important effects. In particular, our model's interactions among agents are assumed to be similar on average. Therefore we expect that the introduction of a complex network distribution of this iteration will be relevant. In this perspective we can already predict that the hubs of this distribution will be very important for policymaking.

The model is meant to represent a realistic basis of analysis and discussion, and can be easily generalized with a complex network of social interactions and with multiple drugs with different social characteristics. We believe that these studies can lead to a higher level of understanding of these phenomena and can be useful for a more effective policy making.

Methods

Model parameters specification. Following we explain in detail the parameters that characterize the agents.

Personal exposure. The personal exposure e_i , describes every possible contact between the agent and the drug world and in particular describes how agents feel about drugs in general and their consumption in particular. It is defined by:

$$e_i(t) = \frac{\sum_{k=1}^N \delta(S_k(t) = 1,2,3,4) - \delta(S_i(t) = 1,2,3,4)}{N-1} \quad (4)$$

This expression simply counts the fraction of drug users within the entire population, but does not include the single agent under observation. The latter represents a type of mean field interaction, which could be easily generalized to complex network situations^{9,18,22}.

Age function. The function $\alpha(y_i(t))$ is dependent on the agent's age and its purpose is to increase the barrier for older agents:

$$\alpha(y_i(t)) = \frac{\exp\left(\frac{-(-c + \lg(y_i(t)))^2}{2d^2}\right)}{ad} \quad (5)$$

The values of $a = 1$; $d = 0.5$; $c = 3$ are chosen in order to outline the importance of age in the consumption of drugs⁷. This expression is a simple mathematical representation of how age influences the probability of drug assumption Fig. 5a. The main characteristic of this function is that the peak of this function is located between sixteen and twenty-four years and then it slowly decreases, as it has been shown by the studies of Prevo.Lab. As we can see from the Figure 5b the $\alpha(y_i(t))$ increases the average value of the b_i^* due to age behavior.

Drug addiction. The drug addiction describes how an agent becomes addicted to drugs. This property is defined by the function dependence $d_i(\pi_i(t), S_i(t))$ which has the purpose to decrease the barrier $b_i^*(t)$. The function $\pi_i(t)$ "stage permanence" is an experience counter:

$$\begin{cases} \pi_i(t) = 1 & \text{if } S_i(t) \neq S_i(t-1) \\ \pi_i(t) = \pi_i(t-1) + 1 & \text{if } S_i(t) = S_i(t-1) \end{cases} \quad (6)$$

and the function dependence is:

$$d_i(\pi_i(t), S_i(t)) = l(t)(\exp(\pi_i(t)S_i(t) * \chi(z)) - 1) + d_i(\pi_i(t-1), S_i(t-1)) \quad (7)$$

This expression represents an exponential growth of the addiction parameter with the persistence of the certain drug user stage. The term $\chi(z)$ represents the *drug coefficient*, which describes how addictive the drug of type z is. In this regard, it would be easy to introduce drugs of different types. For the present study we consider a single case in which $\chi(z) = .0001$. This parameter could be changed for increasing or decreasing the effect of the drug addiction. The parameter $l_i(t)$ is the *first experience coefficient*, which describes the quality of the agent's first experience in using the given drug:

$$\begin{cases} l_i(t) = -2 & \text{if } k_i(t) > 0.75 \ \& \ S_i(t) < 3 \\ l_i(t) = 1 & \text{Otherwise} \end{cases} \quad (8)$$

where $k_i(t)$ is a random number with uniform distribution between $[0 : 1]$. The two possible values of $l_i(t)$ are chosen to give a mathematical representation of the social



hypothesis, that a negative experience has more psychological impact than an equivalent positive one²³. We can redefine the barrier of inclination to drugs with $b_i(t) = b_i^*(t) - d_i(\pi_i(t), S_i(t))$ in order to outline the role of dependence and first experience in the drug consumption and addiction.

Rules for the stage transitions. We define the rules that enable agents to have stage transitions from stage $S_i(t)$ to $S_i(t + 1)$. The Figure 1a in the paper shows all the possible transition stages. Each transition has some different condition due to the initial stage $S_i(t)$.

From $S_i(t) = 0$

From the stage $S_i(t) = 0$ we can have stage transitions into:

- $S_i(t + 1) = 1$ if the EB and SEB barrier are verified for an agent with age $y_i(t) < 26$;
- $S_i(t + 1) = 2$ if the EB and SEB barrier are verified for an agent with age $y_i(t) \geq 26$;
- otherwise the agent remains in the stage of non user $S_i(t) = 0$.

As we can see from Eq.9 the difference between the final stage reached by the agent is dependent only on age:

$$\begin{cases} S_i(t+1)=1 & \text{if } \left[y_i < 26 \ \& \ \frac{p_m(t)}{m_i(y_i)} < 1 - \gamma_i \ \& \ b_i(t) + r_i(t) < e_i(t) \right] \\ S_i(t+1)=2 & \text{if } \left[y_i \geq 26 \ \& \ \frac{p_d(t)}{m_i(y_i)} < 1 - \gamma_i \ \& \ b_i(t) + r_i(t) < e_i(t) \right] \\ S_i(t+1)=0 & \text{Otherwise} \end{cases} \quad (9)$$

From $S_i(t) = 1$

Only an agent with $y_i(t) < 26$ can reach this stage. The possible transitions as we show in Eq.10 are:

- Becomes non-user, if EB or SEB are not verified;
- Persists in the stage of mini-user if the agent gets the sufficient daily noise (opportunity) and has a budget;
- Change in $S_i(t + 1) = 2$ if the agent has funds to purchase the full dose and the SEB is verified without need of the daily noise. The possibility for an agent to get in contact with the full dose is dependent on personal behavior associated with dependence level rather than the daily occasions.

$$\begin{cases} S_i(t+1)=2 & \text{if } [p_d(t)m_i(y_i) < 1 - \gamma_i \ \& \ b_i(t) < e_i(t)] \\ S_i(t+1)=0 & \text{if } [p_m(t)m_i(y_i) > 1 - \gamma_i \ \text{or } b_i(t) + r_i(t) > e_i(t)] \\ S_i(t+1)=1 & \text{Otherwise} \end{cases} \quad (10)$$

An agent becomes $S_i(t + 1) = 2$ when the function dependence and the first experience coefficient decreases the SEB.

From $S_i(t) = 2$

In this stage the agent is an occasional user of normal dose, the agent can:

- Return to non-user stage, if EB or SEB are not verified;
- Stay in $S_i(t + 1) = 2$ if both conditions are verified;
- Become a frequent user if the agent's inclination barrier to drug is reduced by the dependence (SEB without daily noise).

The following equation shows the transition possibilities:

$$\begin{cases} S_i(t+1)=0 & \text{if } \left[\frac{p_d(t)}{m_i(y_i)} > 1 - \gamma_i \ \text{or } b_i(t) + r_i(t) > e_i(t) \right] \\ S_i(t+1)=3 & \text{if } \left[\frac{p_d(t)}{m_i(y_i)} < 1 - \gamma_i \ \& \ b_i(t) < e_i(t) \right] \\ S_i(t+1)=2 & \text{Otherwise} \end{cases} \quad (11)$$

As we can see, the transition rules are quite similar to the previous stage. We have considered that the stage $S_i(t) = 2$ is reachable by all agents without being contingent on age.

From $S_i(t) = 3$

The agent is a frequent user. She does not care about the EB because the addiction raises the necessity of a dose and the money becomes a negligible constraint. She can become:

- Heavy user, pathological, if her inclination barrier to drug decreases by a factor 5 or more;
- She can decide to stop using drugs if the social environment changes drastically, or with the 10% probability, which represents the possibility to stop using drugs due to exogenous environmental factors.
- Otherwise the agent i continues to take drug as a frequent user.

Here we show the transition rules:

$$\begin{cases} S_i(t+1)=4 & \text{if } 5b_i(t) < e_i(t) \\ S_i(t+1)=0 & \text{if } [b_i(t) > e_i(t) \ \text{or } c_i(t) > 0.9] \\ S_i(t+1)=3 & \text{Otherwise} \end{cases} \quad (12)$$

Where $c_i(t)$ is a random number from uniform distribution $[0 : 1]$. There is no more the daily noise $r_i(t)$ and the transitions depend on the variation of $b_i(t)$ due to the

dependence function and the stage persistence. The factor 5 of the first condition is based on our decision^{6,7,9} to discriminate in a significant way the difference between the two stages $S_i(t) = 3$ and $S_i(t + 1) = 4$. The $b_i(t) > e_i(t)$ therefore represents the decreasing possibility of the exposure factor due to a sudden change in the social interactions.

From $S_i(t) = 4$

When an agent becomes a heavy user, she has only two possible choices according to the transition table showed in the main article. The possibilities are:

- The agent can leave drug with the probability of 5%;
- The agent can persist in the stage $S_i(t + 1) = 4$.

At this stage, the situation of the agent is independent of the condition EB and SEB due to every addiction. Therefore we assume only a simple probabilistic transition:

$$\begin{cases} S_i(t+1)=0 & \text{if } l_i(t) > 0.95 \\ S_i(t+1)=4 & \text{Otherwise} \end{cases} \quad (13)$$

Where $l_i(t)$ is a random number from uniform distribution $[0 : 1]$. The probability of the 5% is an estimation suggested by the Prevo.lab studies and is related to the possibility of recovering from drug addiction.

In this way we have defined all the rules that allow an agent to evolve and reach all possible stages of consumption. So far, the agent cannot die and the age $y_i(t)$ is extracted at the beginning of the simulation and remains constant for every t . Later we define the rules that describe the death and birth of the agent and its aging dynamics.

Aging. Here we show the rules that define the process of an agent's vital cycle (death and birth), and the dynamic that leads an agent to overdose.

Death and birth condition. Based on the 2007 ISTAT data we consider the probability of death in a given year for a person of a given age. We label this probability $P_{y_i(t)}$ and every $\tau = 50t$ consecutive iterations we check this rule for each of N agents:

$$\begin{cases} u_i(t) < P_{y_i(t)} & y_i(t+1) = y_i(t) + 1 \\ \text{Otherwise} & i \text{ dies } y_i(t+1) = 10 \end{cases} \quad (14)$$

Where $u_i(t)$ is a random number from uniform distribution $[0 : 1]$. When the agent i dies, she will be replaced by another agent with age $y_i(t + 1) = 10$ and she will be characterized by the new extraction of the parameters β_b, γ_i from the current value of the distributions at time t . Instead, if she lives, she will be one year older.

Overdose rule. By adding the possibility of death, it is possible to improve also some rules of the $S_i(t) = 4$ stage transition. An agent in $S_i(t) = 4$ can become a non-user by either detoxifying in a treatment center or by dying of overdose. When the agent dies of an overdose, the agent will be replaced by a new agent with the new extraction of the parameters β_b, γ_i from the current value of the distributions at time t . The following equation expresses the overdose death condition:

$$\begin{cases} S_i(t+1) \rightarrow 0 & \text{if } g_i(i) > 0.1 \ \text{lives} \\ S_i(t+1) \rightarrow 0 & \text{Otherwise} \ \text{dies} \end{cases} \quad (15)$$

Where $g_i(t)$ is a random number from uniform distribution $[0 : 1]$. The agent with the probability of 10% dies. Otherwise she lives. The probability to survive after an overdose is taken from the data of SimDrug and Sert^{8,15}. With our dynamics we can replicate the same overdoses trend of SimDrug model too.

1. Pietronero, L. Statistical physics: Physicists get social. *Nature Phys.* **6**, 641–640 (2010).
2. Barabási, A. L. The network takeover. *Nature Physics* **8**, 14–16 (2011).
3. Vespignani, A. Modelling dynamical processes in complex socio-technical systems. *Nature Phys.* **8**, 32–39 (2011).
4. Cristelli, M., Pietronero, L. & Zaccaria, A. Critical Overview of Agent-Based Models for Economics. *Arxiv preprint arXiv:1101.1847* (2011).
5. Chakraborti, A., Toke, I. M., Patriarca, M. & Abergel, F. Econophysics: Empirical facts and agent-based models. *Arxiv preprint ArXiv:0909.1974* (2011).
6. Prevo.Lab Dipartimento Dipendenze Ricerca - Studio "Previsione dell'evoluzione dei fenomeni di abuso". *Bollettino Previsionale PREVISIONE* 2012. (Prevo.Lab, MI, 2009).
7. Prevo.Lab Dipartimento Dipendenze Ricerca - Studio Previsione dell'evoluzione dei fenomeni di abuso Area Ricerche sul mercato. (Prevo.Lab, MI, 2009).
8. Prevo.Lab Dipartimento Dipendenze Ricerca - Studio Previsione dell'evoluzione dei fenomeni di abuso Area Interviste Testimoni Privilegiati Strumento Prevo.Meter (Prevo.Lab, MI, 2009).
9. Palla, G., Barabási, A. L. & Vicsek, T. Quantifying social group evolution. *Nature* **446**, 664–667 (2007).
10. Levin, G., Roberts, E. B., Hirsch, G. B. & Collins, J. F. *The persistent poppy: a computer-aided search for heroin policy* (Ballinger, Pub. Co., Cambridge, MA, 1975).



11. Everingham, S. S., Rydell, C. P., United States. Army, United States. Office of National Drug Control Policy & RAND Drug Policy Research Center. *Modeling the demand for cocaine* (Rand. Santa Monica, 1994).
12. Agar, M. H. & Wilson, D. Drugmart: Heroin epidemics as complex adaptive systems. *Complexity* 7, 44–52 (2002).
13. Agar, M. Agents in living color: Towards emic agent-based models. *Journal of Artificial Societies and Social Simulation* 8 (2005).
14. Jones, R., Morris, K. & Nutt, D. *Drugs futures 2025? Foresight: Brain science, addiction and drugs state of science review* (London: Office of Science and Technology, Department of Trade and Industry, UK, 2005).
15. Perez, P. & Dray, A. *Monograph No. 11: SimDrug: Exploring the complexity of heroin use in Melbourne. DPMP Monograph Series* (Fitzroy: Turning Point Alcohol and Drug Centre, MAP, 2005).
16. American Psychiatric Association and American Psychiatric Association. Task Force on DSM-IV. *Diagnostic and statistical manual of mental disorders: DSM-IV-TR* (American Psychiatric Publishing, Inc., VA, 2000).
17. Limpert, E., Stahel, W. A. & Abbt, M. Log-normal distributions across the sciences: keys and clues. *BioScience* 51, 341–352 (2001).
18. Caldarelli, G. *Scale-Free Networks: Complex webs in nature and technology* (Oxford University Press, USA, 2007).
19. Smart, R. G., Whitehead, P. C. & Laforest, L. The prevention of drug abuse by young people: an argument based on the distribution of drug use. *Bulletin on Narcotics* 23, 11–15 (1971).
20. EMCDDA, Reitox Italian Focal Point & Presidenza Del Consiglio Dei Ministri Dipartimento delle politiche antidroga. *2009 NATIONAL REPORT (2008 data) TO THE EMCDDA, New Development, Trends and in-depth information on selected issues* (Reitox Italian Focal Point, 2009).
21. Presidenza Del Consiglio Dei Ministri. *Relazione Annuale al Parlamento sullo stato delle Tossicodipendenze in Italia* (Presidenza Del Consiglio dei Ministri, Rome, 2007).
22. Pastor-Satorras, R. & Vespignani, A. Epidemic spreading in scale-free networks. *Physical review letters* 86, 3200–3203 (2001).
23. Kahneman, D., Slovic, P. & Tversky, A. *Judgment under uncertainty: Heuristics and biases* (Cambridge Univ. Pr, CB, 1982).

Acknowledgements

We acknowledge the study group of Prevo.lab Project in particular Riccardo Gatti, for many interesting and important discussions. This paper is partly supported by the PNR Project CRISIS-lab.

Author contributions

R.D.C. & L.P. designed and developed the model. R.D.C. made the computer simulations. All authors contributed evenly to the manuscript.

Additional information

Competing financial interests: The authors declare no competing financial interests.

License: This work is licensed under a Creative Commons Attribution-NonCommercial-ShareAlike 3.0 Unported License. To view a copy of this license, visit <http://creativecommons.org/licenses/by-nc-sa/3.0/>

How to cite this article: Di Clemente, R. & Pietronero, L. Statistical Agent Based Modelization of the Phenomenon of Drug Abuse. *Sci. Rep.* 2, 532; DOI:10.1038/srep00532 (2012).